

# INSTALLATION INSTRUCTIONS

## POINT-OF-USE AIR-GAP FOR REVERSE OSMOSIS (RO) WATER TREATMENT SYSTEMS

### Wall Mounted AIRGAP™ – Model 3001

#### SPECIFICATIONS

Location: Above RO system module and rinse water drain point.  
Air Gap: 1" of free flow.  
Water Flow: 0.5 gallons per minute maximum.  
Inlet Tubing: ¼" O.D. polyethylene.  
Outlet Tubing: ⅜" O.D. polyethylene.

#### INSTALLATION INSTRUCTIONS

**Important:** The AIRGAP™ must be installed vertically.

1. Select location on wall or cabinet side panel.

**Note:** Location must provide sufficient space to route the tubing without sharp turns. Sharp turns tend to flex and deform the tubing, reducing its flow capacity.

Item callouts refer to Figure 1

2. Mount the bracket (Item 1) to the selected location according to the surface finish:
  - a. Rough or unfinished wood, use two screws (Item 2).
  - b. Smooth, use double-stick tape (Item 3). Surface must be clean
3. Install Tubes onto AIRGAP™ body (Item 4).

**Caution:** Do not use boiling water in this procedure. Use hot water from the sink faucet only.

- a. Soak one end of each tube in hot water until the plastic becomes pliant.
- b. Push the ¼" tube (Item 5) all the way onto the small barb. Push the ⅜" tube (Item 6) all the way onto the large barb.

4. Attach the AIRGAP™ (Item 4) to the bracket (Item 1). Gently press the tubes into their clips. Press the ¼" tube (Item 5) into the small clip and the ⅜" tube (Item 6) into the large clip.
5. Connect the ¼" tube (Item 5) to the system and the ⅜" tube (Item 6) to the drain.

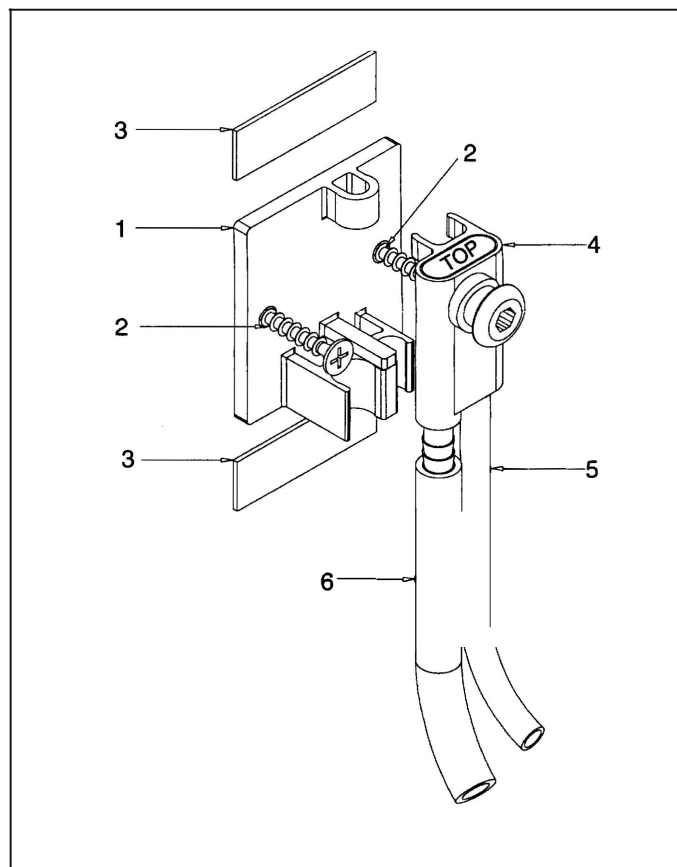


Figure 1: Component Locator, Wall-Mounted Air Gap