

**Miniature Series 07 General Purpose Regulator 1/8" and 1/4" Port Sizes**

- Compact design
- Full flow gauge ports
- Low torque, non-rising adjusting knob
- Snap action knob locks pressure setting when pushed in
- Standard relieving models allow reduction of outlet pressure even when the system is dead-ended
- Can be disassembled without the use of tools or removal from the air line



**Ordering Information.** Models listed include PTF threads, relieving diaphragm, 5 to 100 psig (0.3 to 7 bar) outlet pressure adjustment range\*, with gauge.

Port Size	Model Number	Flow† scfm (dm <sup>3</sup> /s)	Weight lbs (kg)
1/8"	R07-100-RGKA	14 (6.5)	0.31 (0.19)
1/4"	R07-200-RGKA	15 (7)	0.31 (0.19)

† Approximate flow at 100 psig (7 bar) inlet pressure, 90 psig (6.3 bar) set pressure and a droop of 14.5 psig (1 bar) from set.

**Alternative Models**

R 0 7 - ★ ★ ★ - ★ ★ ★ ★

Port Size	Substitute
1/8"	1
1/4"	2

Option	Substitute
Not applicable	0

Option	Substitute
Standard	0
Low flow seat	2

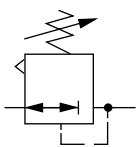
Threads	Substitute
PTF	A
ISO Rc taper	B
ISO G parallel	G

Outlet Pressure Adjustment Ranges*	Substitute
1 to 10 psig (0.1 to 0.7 bar)	A
5 to 50 psig (0.3 to 3.5 bar)	E
5 to 100 psig (0.3 to 7 bar)	K
5 to 125 psig (0.3 to 8.6 bar)	L

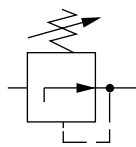
Gauges	Substitute
With	G
Without	N

Diaphragm	Substitute
Relieving	R
Non relieving	N

\* Outlet pressure can be adjusted to pressures in excess of, and less than, those specified. Do not use these units to control pressures outside of the specified ranges.

**ISO Symbols**


Relieving



Non relieving

**See Section ALE-24 for Accessories**



## Technical Data

Fluid: Compressed air

Maximum pressure: 300 psig (20 bar)

Operating temperature: -34° to 150°F (-35° to 65°C) \*

\* Air supply must be dry enough to avoid ice formation at temperatures below 2°C (35°F).

Typical flow at 150 psig (10 bar) inlet pressure, 90 psig (6.3 bar) set pressure and a droop of 15 psig (1 bar) from set:

1/8" ports: 14 scfm (6.5 dm<sup>3</sup>/s)

1/4" ports: 15 scfm (7 dm<sup>3</sup>/s)

Gauge ports:

1/8" PTF with PTF main ports

1/8" ISO Rc with ISO Rc main ports

1/8" ISO Rc with ISO G main ports

Materials:

Body: Zinc

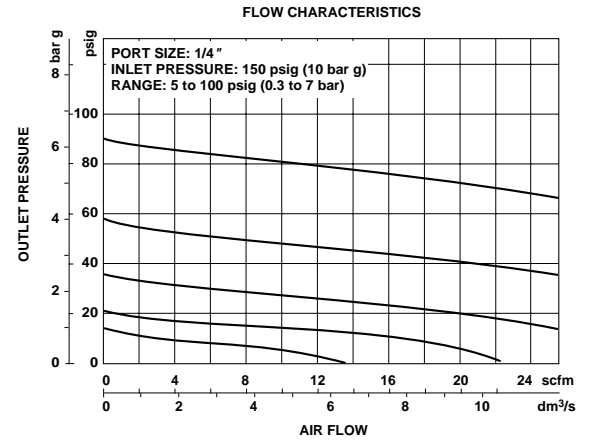
Bonnet: Acetal

Valve: Brass/nitrile

Valve seat: Acetal

Elastomers: Nitrile

## Typical Performance Characteristics

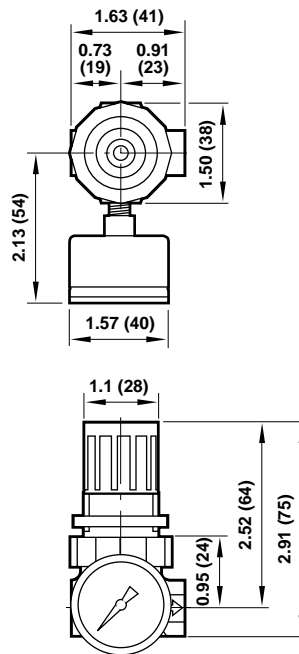


## Service Kits

Item	Type	Part number
Service kit	Relieving	3407-02
	Non relieving	3407-01

Service kit includes slip ring, diaphragm, standard valve seat with o-ring, valve, valve spring.

All Dimensions in Inches (mm)



Panel mounting hole diameter 1.19" (30 mm)  
Maximum panel thickness 0.25" (6 mm)