

DigiPure 9000S

by Fresh Water Systems

Available in **Chrome** or **White**

DigiPure – Digital Water System

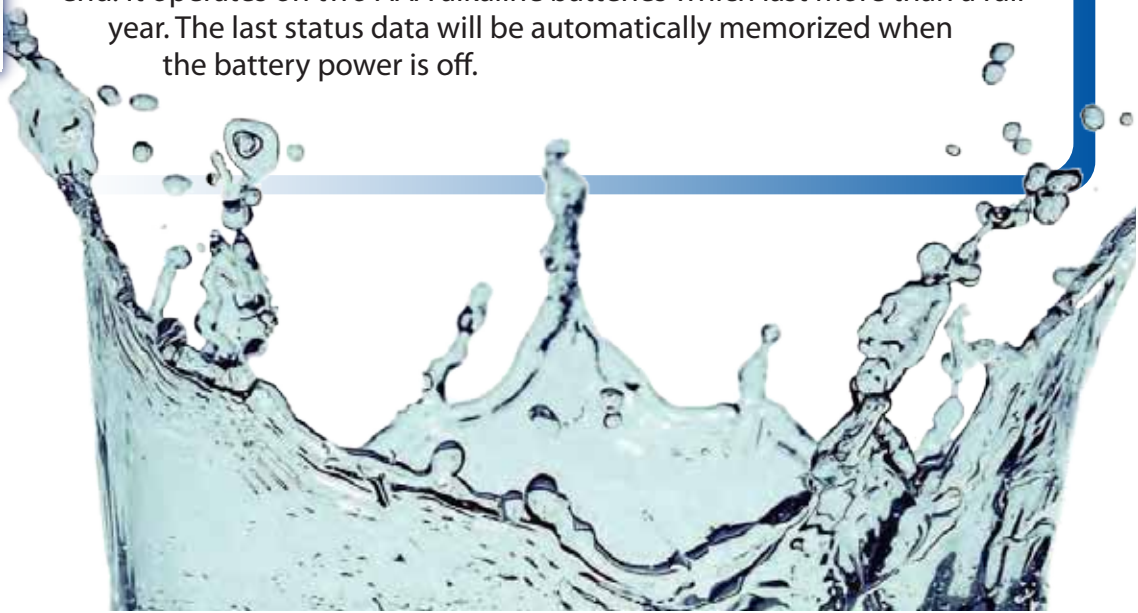
The DigiPure 9000S is an evolutionary water filtration system, which uses the advanced filter to efficiently remove most harmful contaminants in water. An LCD digital display monitor on the filter system monitors the filter life. It generates an audible alert to notify users when to replace the filter (when the filter reaches the end of its life). The smart feature of the monitor keeps users from drinking unsafe water. The removal capability and electrical safety has been tested and certified by independent laboratories, like SGS and CE.

The Advantages of DigiPure

- DigiPure 9000S is a fraction of the cost of bottled water
- DigiPure 9000S filters are fast, easy and conveniently accessible right at your kitchen counter
- The water you need for hydration that's essential for you and your family's health and longevity will always be pure, clean and fresh
- Makes great tasting coffee, tea and cold drinks
- Better water for making infant/baby formula
- Provides high quality water for women during pregnancy
- Perfect for dogs and cats that can be sensitive to odors and the taste of chlorine in tap water

Digital LCD Flow Meter

The LCD display monitor of the DigiPure9000S uses an advanced digital control circuit and a precise flow sensor to accurately monitor how much water has been used, and displays the remaining volume capacity of the filter. The large LCD automatically displays the remaining volume capacity of the filter's life. An audible alert is generated when the filter reaches its end. It operates on two AAA alkaline batteries which last more than a full year. The last status data will be automatically memorized when the battery power is off.

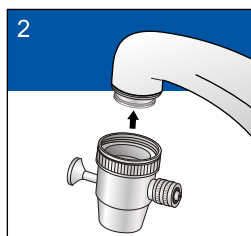
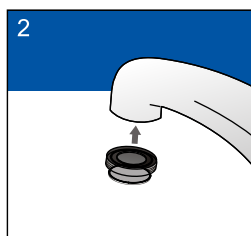
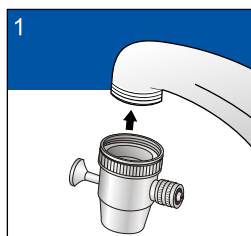


DigiPure 9000S

by Fresh Water Systems

Available in **Chrome** or **White**

Easy to Install



- 1 - Attach the diverter valve to your faucet - unscrew and remove the mounting collar and plastic adapter from the faucet system. Check the threads of the faucet (if threads are outside the faucet).
- 2 - Attach the adapter and diverter valve to your faucet - unscrew and remove the mounting collar and plastic adapter from the faucet system. Check the threads of the faucet. If the threads are inside of the faucet, twist the adapter counterclockwise onto your faucet and tighten by hand until snug. If it is difficult to twist or tighten the adapter, insert a coin into the notch at the bottom of the adapter and twist until snug. Next, twist the diverter valve counterclockwise onto your faucet and tighten by hand until snug.

Comparison of Most Popular Filters

	RO Water Purifier	Carbon Water Filter	DigiPure 9000S
Chlorine, odor, pesticide and chemical removal	●	●	●
Water quality monitoring	○	○	●
Minerals left in water	○	○	●
Space needed	○	◐	●
Water wasting	○	●	●
Easy installation	○	◐	●

● = Good ◐ = Fair ○ = Bad



MADE IN U.S.A.



Available From:

freshwatersystems.com

serving you since 1989

[CLICK HERE](#)

877-335-3339