

Par-Barb Thermoplastic Fittings

Par-Barb fittings are precision injection molded from high-strength, chemically inert, thermoplastic materials.

The specially engineered four-barb design generates the maximum gripping and sealing power when combined with a hose clamp. The unique barb design requires the tube or hose to expand slightly to accept the fitting, providing a positive seal on the barbs.

Par-Barb fittings are widely used with Parflex clear vinyl tubing, urethane tubing and a variety of rubber tubing and hose. Par-Barb fittings meet FDA and NSF-51 specifications for food contact.

Par-Barb is recommended in medical, pollution control, food and beverage applications. Other uses include irrigation, instrumentation, reverse osmosis and deionized water systems.

Temperature range:

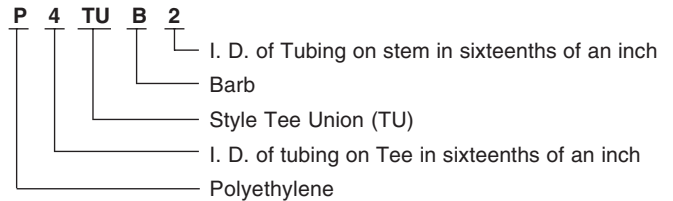
Black Polyethylene: -65°F (-54°C) to +190°F (+88°C.)

White Nylon: -40°F (-40°C) to +200°F (+93°C.)

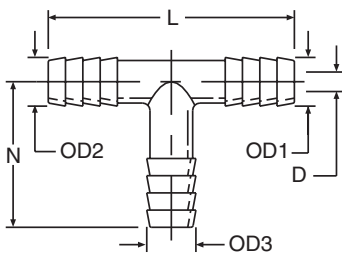
Working Pressures:

Par-Barb fittings are generally used in systems where pressures do not exceed 125 psi. When used in excess of 125 psi, Par-Barb fittings, in all sizes, should be tested by the customer in his particular application. Operating pressures of Par-Barb fittings are governed by ambient and fluid temperatures, type of fluid conveyed, hose or tubing used, clamping mechanism employed and conditions of mechanical abuse.

How to order Par-barb fittings:



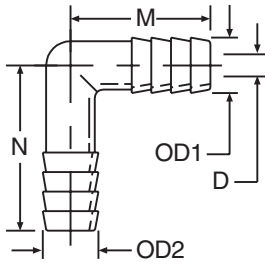
TUB - Tee Union



Black High Density Linear Polyethylene Part Number	White Nylon Part Number	Tube or Hose I. D. 1 & 2	Tube or Hose I. D. 3	O. D. 1 & 2	O. D. 3	L	N	D Flow Diameter
#	#	⊙	⊙	⊙	⊙			∅
P2TUB2	N2TUB2	1/8	1/8	.141	.141	1.203	0.594	.078
P3TUB2	N3TUB2	3/16	1/8	.205	.141	1.941	1.256	.078
P3TUB3	N3TUB3	3/16	3/16	.245	.245	1.941	1.256	.106
P4TUB2	N4TUB2	1/4	1/8	.308	.141	2.004	1.256	.078
P4TUB3	N4TUB3	1/4	3/16	.308	.245	2.004	1.256	.106
P4TUB4	N4TUB4	1/4	1/4	.308	.308	2.004	1.256	.153
P5TUB5	N5TUB5	5/16	5/16	.361	.361	2.058	1.256	.215
P6TUB3	N6TUB3	3/8	3/16	.425	.245	1.941	1.256	.106
P6TUB4	N6TUB4	3/8	1/4	.425	.308	2.121	1.256	.153
P6TUB6	N6TUB6	3/8	3/8	.425	.425	2.134	1.256	.247
P6TUB8	N6TUB8	3/8	1/2	.425	.550	2.121	1.256	.247
P8TUB4	N8TUB4	1/2	1/4	.550	.308	2.246	1.256	.153
P8TUB6	N8TUB6	1/2	3/8	.550	.425	2.248	1.256	.247
P8TUB8	N8TUB8	1/2	1/2	.550	.550	2.248	1.256	.372
P10TUB8	N10TUB8	5/8	1/2	.644	.550	2.340	1.256	.372
P10TUB10	N10TUB10	5/8	5/8	.644	.644	2.340	1.256	.465

*P2UCB2, P2TUB2, P12HPN6 are not FDA compliant.

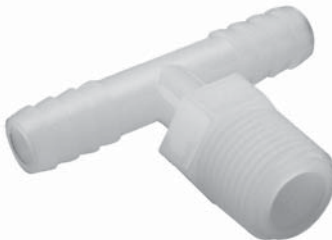
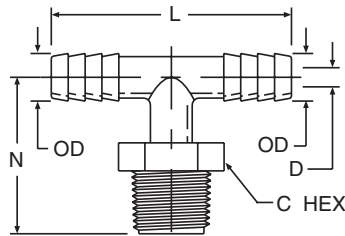
EUB - Elbow Union



Black High Density Linear Polyethylene Part Number	White Nylon Part Number	Tube or Hose I. D.		O. D. 1	O. D. 2	M	N	D Flow Diameter
		1	2					
#	#							
P4EUB4	N4EUB4	1/4	1/4	.308	.308	1.002	1.256	.153
P6EUB6	N6EUB6	3/8	3/8	.425	.425	1.060	1.256	.247
P8EUB4	N8EUB4	1/2	1/4	.550	.308	1.002	1.256	.153
P8EUB6	N8EUB6	1/2	3/8	.550	.425	1.060	1.256	.247
P8EUB8	N8EUB8	1/2	1/2	.550	.550	1.123	1.256	.372
P10EUB10	N10EUB10	5/8	5/8	.644	.644	1.170	1.256	.465
P12EUB12	N12EUB12	3/4	3/4	.788	.788	1.242	1.256	.606

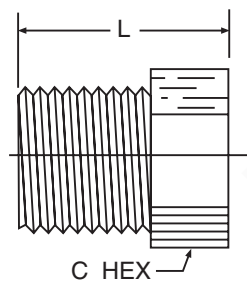


MTB - Tee Male Branch



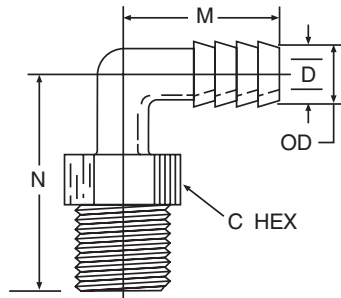
Black High Density Linear Polyethylene Part Number	White Nylon Part Number	Tube or Hose I.D.	NPTF Pipe Thread Size	O.D.	C Hex	L	N	D Flow Diameter
#	#							
P3MTB2	N3MTB2	3/16	1/8	.245	7/16	1.941	1.187	.106
P3MTB4	N3MTB4	3/16	1/4	.245	9/16	1.941	1.406	.106
P4MTB2	N4MTB2	1/4	1/8	.308	7/16	2.004	1.187	.153
P4MTB4	N4MTB4	1/4	1/4	.308	9/16	2.004	1.406	.153
P4MTB6	N4MTB6	1/4	3/8	.308	11/16	2.004	1.436	.153
P6MTB4	N6MTB4	3/8	1/4	.425	9/16	2.121	1.406	.247
P6MTB6	N6MTB6	3/8	3/8	.425	11/16	2.121	1.436	.247
P6MTB8	N6MTB8	3/8	1/2	.425	7/8	2.121	1.626	.247
P8MTB4	N8MTB4	1/2	1/4	.550	9/16	2.246	1.406	.281
P8MTB6	N8MTB6	1/2	3/8	.550	11/16	2.246	1.436	.372
P8MTB8	N8MTB8	1/2	1/2	.550	7/8	2.246	1.626	.372
P12MTB12	N12MTB12	3/4	3/4	.788	1-1/8	2.484	1.636	.606

HPL - Hex Head Pipe Plug



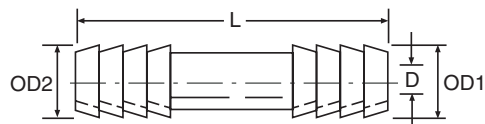
Black High Density Linear Polyethylene Part Number	White Nylon Part Number	NPTF Pipe Thread	C Hex	L Overall Length
#	#			
P2HPL	N2HPL	1/8	7/16	0.660
P4HPL	N4HPL	1/4	9/16	0.880
P6HPL	N6HPL	3/8	11/16	0.905
P8HPL	N8HPL	1/2	7/8	1.092
P12HPL	N12HPL	3/4	1-1/8	1.115

MEB - Male Elbow Connector



Black High Density Linear Polyethylene Part Number	White Nylon Part Number	Tube or Hose I. D.	NPTF Pipe Thread	C Hex	O. D.	M	N	D Flow Diameter
#	#							
P3MEB2	N3MEB2	3/16	1/8	7/16	.245	0.971	1.186	.106
P3MEB4	N3MEB4	3/16	1/4	9/16	.245	0.971	1.406	.106
P4MEB2	N4MEB2	1/4	1/8	7/16	.308	1.002	1.186	.153
P4MEB4	N4MEB4	1/4	1/4	9/16	.308	1.002	1.406	.153
P4MEB6	N4MEB6	1/4	3/8	11/16	.308	1.002	1.436	.153
P4MEB8	N4MEB8	1/4	1/2	7/8	.308	1.002	1.626	.153
P4MEB12	N4MEB12	1/4	3/4	1-1/8	.308	1.002	1.636	.153
P6MEB2	N6MEB2	3/8	1/8	7/16	.425	1.060	1.186	.247
P6MEB4	N6MEB4	3/8	1/4	9/16	.425	1.060	1.406	.247
P6MEB6	N6MEB6	3/8	3/8	11/16	.425	1.060	1.436	.247
P6MEB8	N6MEB8	3/8	1/2	7/8	.425	1.060	1.626	.247
P6MEB12	N6MEB12	3/8	3/4	1-1/8	.425	1.060	1.636	.247
P8MEB4	N8MEB4	1/2	1/4	9/16	.550	1.123	1.406	.372
P8MEB6	N8MEB6	1/2	3/8	11/16	.550	1.123	1.436	.372
P8MEB8	N8MEB8	1/2	1/2	7/8	.550	1.123	1.626	.372
P8MEB12	N8MEB12	1/2	3/4	1-1/8	.550	1.123	1.636	.372
P10MEB6	N10MEB6	5/8	3/8	11/16	.644	1.170	1.436	.465
P10MEB8	N10MEB8	5/8	1/2	7/8	.644	1.170	1.626	.465
P10MEB12	N10MEB12	5/8	3/4	1-1/8	.644	1.170	1.636	.465
P12MEB8	N12MEB8	3/4	1/2	7/8	.788	1.242	1.626	.606

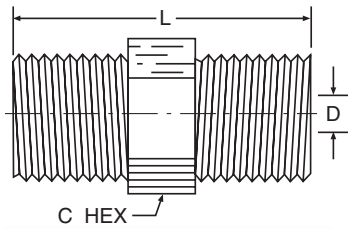
UCB - Union Connector



Black High Density Polyethylene Part Number	White Nylon Part Number	Tube I. D. 1	Tube I. D. 2	O. D. 1	O. D. 2	L	D Flow Diameter
#	#						
P2UCB2	N2UCB2	1/8	1/8	.152	.152	.625	.050
P3UCB3	N3UCB3	3/16	3/16	.245	.245	1.750	.106
P4UCB3	N4UCB3	1/4	3/16	.308	.245	1.750	.106
P4UCB4	N4UCB4	1/4	1/4	.308	.308	1.750	.153
P5UCB5	N5UCB5	5/16	5/16	.361	.361	1.750	.215
P6UCB4	N6UCB4	3/8	1/4	.425	.308	1.750	.153
P6UCB6	N6UCB6	3/8	3/8	.425	.425	1.733	.247
P8UCB4	N8UCB4	1/2	1/4	.550	.308	1.750	.153
P8UCB6	N8UCB6	1/2	3/8	.550	.425	1.750	.247
P8UCB8	N8UCB8	1/2	1/2	.550	.550	1.750	.372
P10UCB6	N10UCB6	5/8	3/8	.644	.425	1.750	.247
P10UCB8	N10UCB8	5/8	1/2	.644	.550	1.750	.372
P10UCB10	N10UCB10	5/8	5/8	.644	.644	1.750	.465

*P2UCB2, P2TUB2, P12HPN6 are not FDA compliant.

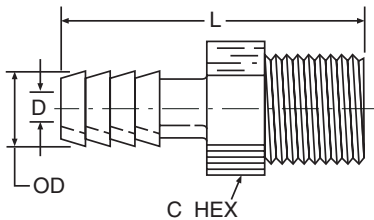
HPN - Hex Pipe Nipple



Black High Density Linear Polyethylene Part Number	White Nylon Part Number	Side 1	Side 2	C Hex	L	D1 Diameter	D2 Diameter
#	#						
P2HPN2	N2HPN2	1/8	1/8	7/16	1.062	.187	.187
P4HPN2	N4HPN2	1/4	1/8	9/16	1.281	.286	.187
P4HPN4	N4HPN4	1/4	1/4	9/16	1.469	.285	.285
P6HPN2	N6HPN2	3/8	1/8	11/16	1.332	.406	.187
P6HPN4	N6HPN4	3/8	1/4	11/16	1.488	.406	.285
P6HPN6	N6HPN6	3/8	3/8	11/16	1.500	.406	.406
P8HPN2	N8HPN2	1/2	1/8	7/8	1.485	.618	.187
P8HPN4	N8HPN4	1/2	1/4	7/8	1.687	.618	.285
P8HPN6	N8HPN6	1/2	3/8	7/8	1.687	.618	.406
P8HPN8	N8HPN8	1/2	1/2	7/8	1.875	.618	.618
P12HPN6	N12HPN6	3/4	3/8	1-1/8	1.703	.750	.408
P12HPN8	N12HPN8	3/4	1/2	1-1/8	1.891	.750	.618
P12HPN12	N12HPN12	3/4	3/4	1-1/8	1.932	.750	.750

*P2UCB2, P2TUB2, P12HPN6 are not FDA compliant.

MCB - Male Connector Adapter



Black High Density Linear Polyethylene Part Number	White Nylon Part Number	Tube or Hose I. D.	NPTF Pipe Thread	C Hex	O. D.	L	D Flow Diameter
#	#						
P3MCB2	N3MCB2	3/16	1/8	7/16	.245	1.530	.106
P3MCB4	N3MCB4	3/16	1/4	9/16	.245	1.750	.106
P3MCB8	N3MCB8	3/16	1/2	7/8	.245	1.970	.106
P4MCB2	N4MCB2	1/4	1/8	7/16	.308	1.530	.153
P4MCB4	N4MCB4	1/4	1/4	9/16	.308	1.750	.153
P4MCB6	N4MCB6	1/4	3/8	11/16	.308	1.780	.153
P4MCB8	N4MCB8	1/4	1/2	7/8	.308	1.970	.153
P4MCB12	N4MCB12	1/4	3/4	1-1/8	.308	1.980	.153
P5MCB2	N5MCB2	5/16	1/8	7/16	.361	1.530	.215
P5MCB4	N5MCB4	5/16	1/4	9/16	.361	1.750	.215
P5MCB6	N5MCB6	5/16	3/8	11/16	.361	1.780	.215
P6MCB2	N6MCB2	3/8	1/8	7/16	.425	1.530	.247
P6MCB4	N6MCB4	3/8	1/4	9/16	.425	1.750	.247
P6MCB6	N6MCB6	3/8	3/8	11/16	.425	1.780	.247
P6MCB8	N6MCB8	3/8	1/2	7/8	.425	1.970	.247
P6MCB12	N6MCB12	3/8	3/4	1-1/8	.425	1.980	.247
P8MCB4	N8MCB4	1/2	1/4	9/16	.550	1.750	.372
P8MCB6	N8MCB6	1/2	3/8	11/16	.550	1.780	.372
P8MCB8	N8MCB8	1/2	1/2	7/8	.550	1.970	.372
P8MCB12	N8MCB12	1/2	3/4	1-1/8	.550	1.980	.372
P10MCB6	N10MCB6	5/8	3/8	11/16	.644	1.780	.465
P10MCB8	N10MCB8	5/8	1/2	7/8	.644	1.970	.465
P10MCB12	N10MCB12	5/8	3/4	1-1/8	.644	1.980	.465
P12MCB8	N12MCB8	3/4	1/2	7/8	.788	1.970	.606
P12MCB12	N12MCB12	3/4	3/4	1-1/8	.788	1.980	.606

