

# SFN Series

Single Filter Housings  
Bolt and Nut Closure

neo·PURE™



## Applications

- Water
- Food and Beverage
- Electronics
- Coolants
- Oil / Gas
- Paints / Inks / Coatings
- Paper and Pulp
- Chemicals
- Desalination Prefiltration
- Cooling Tower Filtration



USA MADE

*Residential / Commercial / Industrial  
Filtration Applications*

## Standard Features

- Manufactured in USA
- Designed for commercial or industrial filter applications
- Heavy-duty 304L or 316L stainless steel construction for maximum durability and corrosion resistance
- Bolt and nut closure allow for quick cartridge change-outs (T-handle optional) and inline connections for easy installation
- Uses double open-end (DOE) cartridges
- Available with 1/4", 3/8", 1/2", 3/4", and 1" connections
- Both ends of cartridge have knife-edge seals to help eliminate potential bypass

## Specifications, Operating Parameters and Options

### Maximum Operating Pressure

250 psig (17 bar) @ 275°F (135°C)

### Connections

Inlet/Outlet: 1/2", 3/4", or 1" FNPT

Optional: 1" RF flange, BSP or 1" sanitary ferrules

Drain Ports: 1/8" FNPT

### Materials of Construction

Head: 304L, 316L or Brass Nickel-Plated

Shell/Connections: 304L or 316L stainless steel

Drain: Stainless steel plug

### Gaskets

Standard: Buna N (FDA grade)

Optional: EPR, silicone, Teflon, Viton, neoprene, vellumoid

### Finish

Polycoat on exterior surfaces

### Options

1/4" gauge ports In/Out

Tee handle

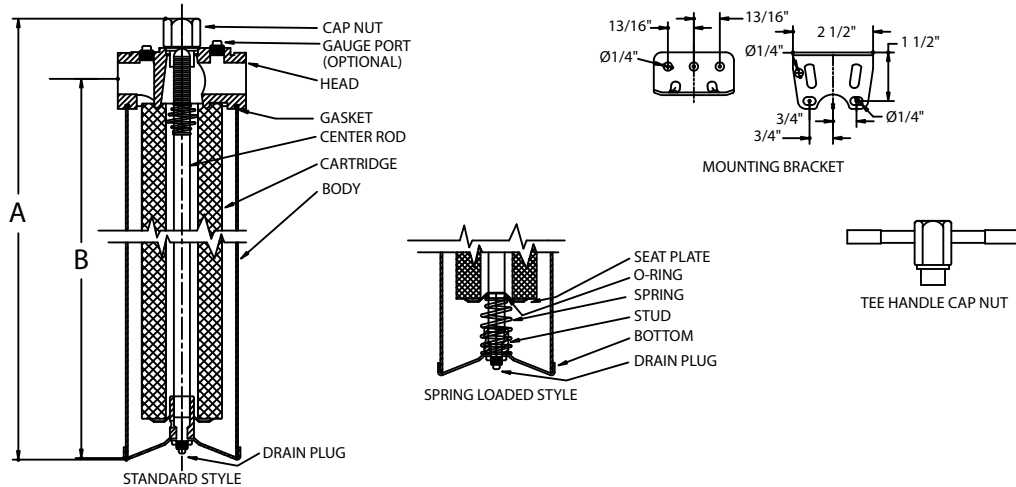
Variable seal (spring loaded)

Vent screw outlet

MODEL	QUANTITY (LENGTH) OF CARTRIDGES	RATED FLOW CAPACITY* GPM (LPM)	MAXIMUM DIAMETER CARTRIDGE	DRAIN SIZE	STANDARD		SPRING LOADED	
					A	B	A	B
SFNx	1 (4-7/8")	3.5 (132)	2-3/4"	1/8"	8-7/8" (22.5)	6-15/16" (17.6)	9-1/2" (24.1)	7-9/16" (19.2)
SFN1	1 (9-3/4")	7 (26.5)	2-3/4"	1/8"	13-3/4" (34.9)	11-13/16" (33.0)	14-3/8" (36.5)	12-7/16" (31.6)
SFN2	1 (20")	14 (53.0)	2-3/4"	1/8"	23-7/8" (60.6)	21-15/16" (55.7)	24-1/2" (62.2)	22-9/16" (57.3)
SFN3	1 (30")	21 (79.5)	2-3/4"	1/8"	33-7/8" (86.0)	31-15/16" (81.1)	34-1/2" (87.6)	32-9/16" (82.7)

\* Based upon 7 gpm per 10" length with a 25 micron wound cartridge at 2 PSID clean and viscosity of 1 cps. Flow rates are approximate. Actual flow rates are based upon fluid, viscosity, cartridge type, micron ratings and other factors.

## Dimensions



## Ordering Guide (Example: SFN1B-316L4-FL-T-S)

SFN	1B	-	316L	4	-	FL	-	T	-	S
MODEL	CARTRIDGE LENGTH		MATERIAL	INLET/OUTLET SIZE		CONNECTION TYPE		OPTIONS		GASKET
SFN = 304L Stainless Steel Head Nut Double Open End	1 = 9-3/4" 1B = 10" (9-7/8") 2 = 20" 2B = 19-1/2" 3 = 30" 3B = 29-1/4" x = 4-7/8" available		Blank = 304L (standard) 316L = 316L	4 = 1/2" 6 = 3/4" 8 = 1"		Blank = FNPT (standard) FL = Flange 1" only BP = BSP TC = Ferrules 1" only		Blank = None (standard) GP = 1/4" gauge ports IN/OUT T = Tee handle DSG = Variable seal (spring loaded) V = Vent screw outlet		Blank = Buna N (standard) E = EPR S = Silicone T = Teflon N = Neoprene Vell = Vellumoid

## Cartridge Options

Available in 9-3/4", 20" and 30" Lengths



**Filter Cartridges Selection Guide**  
CLICK HERE



**Meltblown Sediment Cartridges**

For more information, see **MB Series Brochure**



**String Wound Cartridges**

For more information, see **WPP Series Brochure**

**Pleated Filter Cartridges**



**NeoLogic**  
SOLUTIONS  
Filtration Division

9450 SW Gemini Dr, ECM #83358, Beaverton, OR 97008  
Tel 855-896-3525 | Fax 866-409-9622  
www.neologicsolutions.com  
email: info@neologicsolutions.com  
STUART, FL | BEAVERTON, OR | GREENVILLE, SC | SAN DIEGO, CA

**Questions?**

Ask one of our Service Representatives:  
Mon-Fri 8a-8p, Sat 8:30a-4:30p EST

We ship 6 days a week! **FedEx**