



AquaCera
water filtration technology



PRODUCTS

Ceramics

Ceramic filters have history as a means of filtering water dating back to the early 1800's when reliable drinking water sources were not available in most countries; that history and development from the early filters has allowed progression to today's ceramics. Our advances in the ceramic filtration manufacturing process result in a more effective and efficient means of treating a wide range of waterborne contaminants. Our modern manufacturing practices give our ceramic elements a more controlled and consistent pore structure; the inclusion of silver gives the filter elements bacteriostatic properties which prevents mitosis (grow through) and are self sterilizing.

Using ceramic filters as a means of treating and filtering water is not new, the benefits however remain for many reasons.

- A tried and true method of removing pathogenic bacteria and harmful cysts from treated and untreated waters alike.
- Cleanable, so instead of throwing away the filter when it clogs, you simply clean the ceramic shell to restore the flow rate.
- The tight porosity of the ceramic shell slows the water flow through the filter allowing for sufficient contact time with the core material allowing for better contaminant reduction.
- Ceramic shell protects the core material from premature failure due to bio-fouling (accumulation of microorganisms, algae, etc. on the surface).
- Retains healthy minerals; takes out the bad and leaves in the good.
- Filters can operate under low pressure making it a diverse filtration medium.

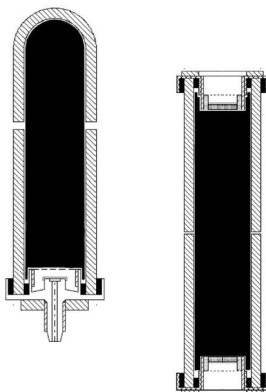
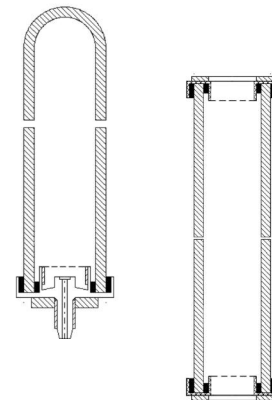
Our ceramic range is available with or without a core material, which allows greater flexibility in choosing the right filter based on your water filtration needs.

Filter Grades

Ceramic

Ceramic outer shell only. Excellent as a stand alone filter for removing unwanted sediment and bacteriologic contaminants.

- 0.5 Micron Absolute
- 100% Removal of cysts
- 99.9999% Pathogenic bacteria removal
- >99.9% Efficiency at 0.2 micron
- Cleanable for prolonged life
- Silver impregnated to prevent bacteria grow through
- Capacities—Slimline up to 15000 gallons/57000 liters
Imperial up to 15000 gallons/57000 liters



CeraPlus™

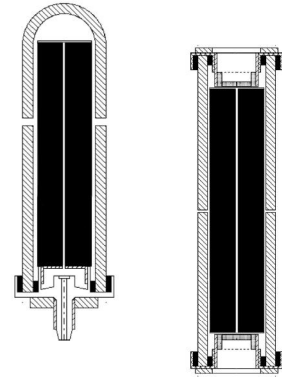
The Plus adds a granular activated, coconut shell based carbon to the core of the ceramic, the addition of which allows for treatment of chlorine, taste and odor. A popular and economical choice for gravity filter systems and other low pressure applications.

- All the features of our Ceramic shell plus the following
- Chlorine reduction—>95% Gravity/>50% Pressure
- Organics reduction—>95% Gravity/>50% Pressure
- Capacities—Slimline 600 gallons/2800 liters
Imperial 1000 gallons/3800 liters

CeraUltra™

The CeraUltra™ utilizes a carbon block core with chlorine, lead, mercury, VOC's and heavy metal reduction for pressurized filtration systems only.

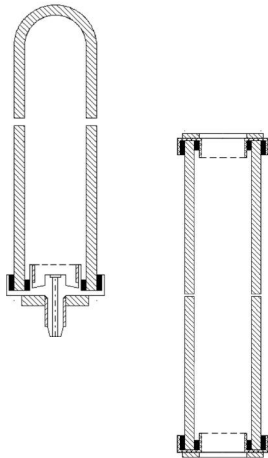
- All the features of our Ceramic shell plus the following
- >98% Lead & mercury reduction
- >97% Chlorine reduction
- Capacities—Slimline 1500 gallons/5700 liters—chlorine
600 gallons/2300 liters—lead
Imperial 4600 gallons/17500 liters—chlorine
1200 gallons/4600 liters—lead



CeraCarb™ Composite

CeraCarb™ is a ceramic composite which includes a special mix of carbons which are infused throughout the filter, resulting in exceptional chemical removal capabilities in addition to the removal of pathogenic bacteria and cysts. As the carbon is infused throughout the ceramic, CeraCarb™ filters are dark grey in appearance, however they are still cleanable to prolong filter life.

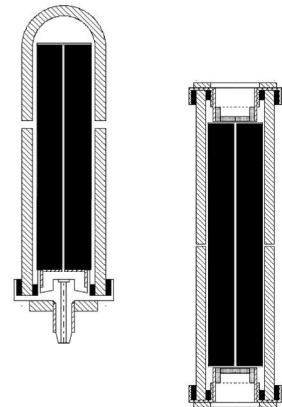
- 0.7 Micron absolute
- >99.99 Efficiency at 0.2 micron
- >99% Lead reduction
- >99% Chlorine reduction
- >90% Arsenic reduction
- >95% VOC's & THM reduction
- Capacities—Slimline 1500 gallons/5700 liters—chlorine
750 gallons/2800 liters—lead
Imperial 2100 gallons/8000 liters—chlorine
1050 gallons/4000 liters—lead



CeraMetix®

CeraMetix® is the most advanced filter available. AquaMetix® core technology is used inside our Ceramic shell for the reduction of aluminum, arsenic, cadmium, chloramines, chlorine, cysts, fluoride, lead, mercury, nickel, radionuclides, silver, tri-halomethanes, VOC's and more in a revolutionary block core. **CeraMetix® GF** are for use in gravity filter systems and utilize AquaMetix® in a granular form.

- All the features of our Ceramic shell, plus the following
- >99% Chloramine reduction
- >99% Chlorine reduction
- >99% Lead reduction
- >99% Herbicides and Pesticides reduction
- >99% Glyphosate reduction
- >98% VOC's reduction
- >98% Heavy metals reduction
- >92% Nitrates reduction
- >85% Fluoride reduction
- Capacities—Slimline 2000 gallons/7500 liters—chlorine
600 gallons/2300 liters—chloramines
500 gallons/1900 liters—lead
Imperial 4000 gallons/15000 liters—chlorine
1200 gallons/4600 liters—chloramines
1000 gallons/3800 liters—lead

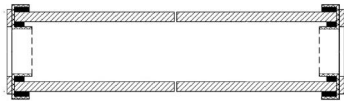
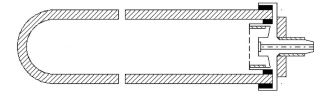


Filter Sizes and Types

Candles—Slimline

Slimline ceramic candles have a domed end and are available in the following grades: Ceramic, CeraPlus™, CeraUltra™, CeraCarb™ and CeraMetix®. All Slimline filter candles are 2" diameter and are available in a variety of lengths. Standard lengths are 5", 7", 9" and 10". Not all filters are designed to operate in gravity and/or pressure systems and not all filters are available in all lengths.

Slimline candles are designed to fit all AquaCera gravity systems and pressure systems.

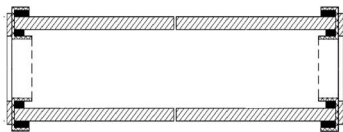
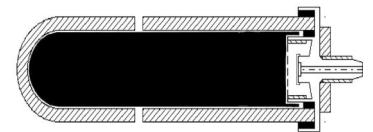


Cartridges—Slimline

Slimline cartridges measure 9 3/4" in length. Slimline cartridges have a 2" diameter and are available in Ceramic, CeraPlus™ and CeraCarb™ grades. All Slimline cartridges are designed to fit Industry Standard filter housings. Cartridges are open on both ends, also referred to as an OBE.

Candles—Imperial

Our larger and higher flowing filters are called Imperial. Imperial candles have a domed end and are available in the following grades: CeraPlus™, CeraCarb™ and CeraMetix®. Imperial filter candles are 2 3/4" diameter and are available in a variety of lengths. Standard lengths are 5", 7", 9" and 10". Not all filters are designed to operate in gravity and/or pressure systems and not all filters are available in all lengths.



Cartridges—Imperial

All Imperial ceramic cartridges are 2 3/4" diameter and measure 9 3/4" in length. Imperial cartridges are available in Ceramic, CeraPlus™, CeraUltra™, CeraCarb™ and CeraMetix® grades. All Imperial cartridges are designed to fit Industry Standard filter housings. Imperial cartridges offer higher flow rates and increased capacity over Slimline cartridges.

Specialty Filters

We manufacture specialty filters for applications that require specific contaminant removals/reductions. Our extensive research and development in specialty medias means we only offer filters that perform to the related contaminant. These filters are not made from ceramic.

Specialty filters are available in specific sizes as listed below.

AquaMetix® - Chloramine, Lead, VOC's, Heavy Metals, Fluoride Reduction

A unique technology designed to provide the highest quality drinking water possible from a single stage block filter. AquaMetix® will reduce a wide variety of drinking water contaminants of both aesthetic and health concern. The dense pore structure and vast surface area is ideally suited to improving taste and odor, color, chemicals, MTBE, and fluoride.

Available in a Slimline 10" candle and Imperial OBE.

- NSF 61 certified materials
- >99% Chloramine reduction—3ppm challenge
- >99% Lead reduction
- >99% Herbicides and Pesticides reduction
- >99% Glyphosate reduction
- >98% VOC's reduction
- >98% Heavy metals reduction
- >92% Nitrates reduction
- >85% Fluoride reduction
- Capacities—Slimline 2"x10" 3500 gallons/13250 liters—Chlorine
1750 gallons/6600 liters—Chloramines
1150 gallons/4350 liters—Lead
- Imperial 2.5"x9.75" 7000 gallons/26500 liters—Chlorine
3500 gallons/13250 liters—Chloramines
2300 gallons/13250 liters—Lead

B2—Fluoride/Heavy Metal Reduction

B2 is designed to reduce fluoride & heavy metals only. Heavy metals—Lead, Aluminum, Cadmium, Copper, Zinc, Iron, Manganese, Silver, Arsenic, Nickel, Mercury, and Chromium. Available in Slimline 10" candle, 4" add-on candle for gravity filters and Imperial OBE.

- NSF certified materials
- Up to 95% Fluoride reduction
- >90% Heavy Metals reduction
- Capacities—Slimline 2"x10" 600 gallons/1500 liters
Add-On 2"x4" 300 gallons/750 liters
Imperial OBE 1000 gallons/2300 liters

A3—Nitrate Reduction

A3 is designed to reduce nitrates, nitrites and sulfates only. Available in Slimline 10" candle, 4" add-on candle for gravity filters and Imperial OBE.

- NSF certified materials
 - Up to >90% Reduction
 - Capacities—Slimline 2"x10" 400 gallons/1500 liters
Add-On 2"x4" 200 gallons/750 liters
Imperial OBE 600 gallons/2300 liters
-

Specialty Filters

A5—Arsenic Reduction

A5 is designed to reduce arsenic to safe drinkable levels. This unit incorporates a specially formulated ferric-oxide based activated alumina with five times the adsorptive capabilities of unpromoted activated alumina. It is effective at removing arsenic at a wider range of pH and requires little or no pH adjustment of the raw water. The material is drinking water grade quality, and suitable for potable water treatment. The media is post treated for low aluminum leachability into treated water. Available in Slimline 10" candle, 4" add-on candle for gravity filters and Imperial OBE.

- NSF certified materials
- Up to >95% Reduction
- Capacities—Slimline 2"x10" 400 gallons/1500 liters
Add-On 2"x4" 200 gallons/750 liters
Imperial OBE 600 gallons/2300 liters

M1—MTBE Reduction

M1 is designed to reduce MTBE (methyl-tertiary-butyl-ether) only. Available in Slimline 10" candle, 4" add-on candle for gravity filters and Imperial OBE.

- NSF certified materials
- Up to >95% Reduction
- Capacities—Slimline 2"x10" 400 gallons/1500 liters
Add-On 2"x4" 200 gallons/750 liters
Imperial OBE 600 gallons/2300 liters

FS1—Scale/Hardness Reduction

FS1 is designed for scale, corrosion, chlorine, taste and odor protection. This innovative cartridge provides controlled release of Siliphos, a food grade scale and corrosion inhibitor. Controlled release provides effective scale and corrosion protection for the life of the cartridge. The Siliphos is combined with a catalytic activated carbon; thus preventing bonding and caking, common with granular poly-phosphate cartridges. Available in Slimline 10" candle and Imperial OBE.

- NSF certified materials
- Capacities—Slimline 2"x10" 400 gallons/1500 liters
Imperial OBE 600 gallons/2300 liters

AO1—Alkaline filter

AO1 is designed to promote a balanced pH alkaline water with improved Oxygen Reduction Potential utilizing earth minerals without the unwanted bad tastes often associated with high pH balanced water treatment systems. Filtration life is optimized for 1 year usage without degradation of the pH properties and ability to create an improved ORP potential. Individual results will vary between 9.2 and 10 on the acid/alkaline scale of 4-14. The media within the cartridge is comprised of naturally occurring minerals which are chosen to provide the appropriate performance and to contribute to the bonding of the media in a ceramic form. Available in Slimline 10" candle and Imperial OBE.

- NSF certified materials
 - Capacities—Slimline 2"x10" 1000 gallons/3800 liters
Imperial OBE 1500 gallons/5700 liters
-

CounterTop Systems

HCP

The HCP is a freestanding filter system for countertop use, which is readily attached to an existing faucet via a diverter valve. The HCP allows filtered or unfiltered water to be drawn from the existing faucet. The housing is molded from acetyl and polyester materials and needs no permanent modifications to the plumbing. This system is designed for cold water use only.

Available filters for this system are: Ceramic, CeraUltra™, CeraCarb™, CeraMetix® and AquaMetix®. This system accepts 10" Slimline candles only.



HCS

The HCS is a freestanding filter system for countertop use, which is readily attached to an existing faucet via a diverter valve. The HCS allows filtered or unfiltered water to be drawn from the existing faucet. The housing is manufactured from stainless steel and needs no permanent modifications to the plumbing. This system is designed for cold water use only.

This system requires one 10" AquaCera® ceramic filter element with the short mount.

Available filters are the Ceramic, CeraUltra™, CeraCarb™, CeraMetix® and AquaMetix®. This system accepts 10" Slimline candles only.



Teros™ CounterTop Purifier

The Teros™ CounterTop Ultra-Filtration system combines our Hollow Fiber (Gen.2) membranes made of PES and our AquaMetix® block filter element to provide a comprehensive filtration system in a countertop system offering >0.5 gallon per minute flow rates. The Teros™ is readily attached to an existing faucet via a diverter valve which allows filtered or unfiltered water to be drawn from the existing faucet. Ergonomically designed for easy installation, and only spent filters need to be replaced.

- 99.9999999% Cryptosporidium removal
- 99.9999% E.Coli/Bacteria removal
- 99.999% Virus removal (MS2 bacteriophage test)
- >99% Chloramine reduction
- >99% Chlorine reduction
- >99% Lead reduction
- >99% Herbicides and Pesticides reduction
- >99% Glyphosate reduction
- >98% VOC's reduction
- >98% Heavy metals reduction
- >92% Nitrates reduction
- >85% Fluoride reduction
- Capacities: UF Membrane 18-24 months

AquaMetix® candle 3500 gallons/13250 liters—Chlorine
1750 gallons/6600 liters—Chloramines
1150 gallons/4350 liters—Lead



Under-Counter Systems

IP

This is an in-line pressure filter housing molded from talc-filled ABS and is supplied with the mounting bracket & screws. The inlet & outlet are 3/8" push-fit connectors for easy installation. Also available with a DIY installation kit which includes most parts needed for installation, including a faucet. This system is designed for cold water use only.

Available filters for this system are: Ceramic, CeraUltra™, CeraCarb™, CeraMetix® and AquaMetix®. This system accepts 10" Slimline candles only.



EcoFast®

The EcoFast® is an eco-friendly, compact in-line filter system. The housing allows for easy removal of the filter element for maintenance by utilizing a built-in automatic water shut off valve. The unique design of the housing means less waste when replacing the filter, as only the element is discarded. This system uses specially designed filters that will only fit in this system. Also available with a DIY installation kit which includes most parts needed for installation, including a faucet. This system is designed for cold water use only.

Available filters are the FD MultiMedia, CeraCarb™ and AquaMetix®.

EcoFast® Twin

The EcoFast® Twin allows you to make a more comprehensive filter system.

Also available with a DIY installation kit which includes most parts needed for installation, including a faucet.

Choose any 2 of these available filters FD MultiMedia, CeraCarb™ and AquaMetix®.



IIQC

The IIQC is an in-line system which uses its own specially designed Imperial cartridge utilizing a CeraCarb™ ceramic shell with our AquaMetix® media inside. This system uses specially designed filters that will only fit in this system. Also available with a DIY installation kit which includes most parts needed for installation, including a faucet.

The IIQC system utilizes a quick change mount that makes for easy and fast filter replacement. The ceramic filter inside this unit cannot be cleaned as it is encapsulated inside the housing. This system is designed for cold water use only.

Under-Counter Systems

Teros™ 2 Purifier

The Teros™ 2 Purifier combines our latest Gen2 hollow fiber membrane technology for exceptional bacteria, cyst and virus reduction and our AquaMetix® filter for unequaled chemical reductions. The Teros™ 2 is a twin housing system capable of delivering 0.5 gallon per minute flow rates without the need of a storage tank.

- 99.9999999% Cryptosporidium removal
- 99.99999% E.Coli/Bacteria removal
- 99.9999% Virus removal (MS2 bacteriophage test)
- >99% Chloramine reduction
- >99% Chlorine reduction
- >99% Lead reduction
- >99% Herbicides and Pesticides reduction
- >99% Glyphosate reduction
- >98% VOC's reduction
- >98% Heavy metals reduction
- >92% Nitrates reduction
- >85% Fluoride reduction
- Capacities: UF Membrane 18-24 months
AquaMetix® candle 3500 gallons/13250 liters—Chlorine
1750 gallons/6600 liters—Chloramines
1150 gallons/4350 liters—Lead



Teros™ 3 Purifier

The Teros™ 3 Purifier includes our 5 stage FD synthetic fiber block filter to the Teros™ 3 as a pre-filter to provide a high flow filtration of sediment, chlorine, cyst, lead and scale prevention. The Teros™ 3 is a triple housing system capable of delivering 0.5 gallon per minute flow rates without the need of a storage tank.

- 99.9999999% Cryptosporidium removal
- 99.99999% E.Coli/Bacteria removal
- 99.9999% Virus removal (MS2 bacteriophage test)
- >99% Chloramine reduction
- >99% Chlorine reduction
- >99% Lead reduction
- >99% Herbicides and Pesticides reduction
- >99% Glyphosate reduction
- >98% VOC's reduction
- >98% Heavy metals reduction
- >92% Nitrates reduction
- >85% Fluoride reduction
- Capacities: UF Membrane 18-24 months
AquaMetix® candle 3500 gallons/13250 liters—Chlorine
1750 gallons/6600 liters—Chloramines
1150 gallons/4350 liters—Lead
FD MultiMedia—1000 gallons/3800 liters



Gravity Systems

Gravity filter systems were first designed to be used in an emergency situation where a reliable water source was not available. Today, while still used for emergency and preparedness, gravity filter systems are used for everyday water filtration, either in your home or anywhere you may travel, offering safe, clean filtered water for individuals, families and communities around the world.



Mini Traveler™

The Mini Traveler™ is a one liter, personal gravity filter system that accommodates one 5" Slimline ceramic filter. Manufactured from high grade stainless steel, it is highly portable and lightweight. The Mini Traveler™ comes complete with a nylon carrying bag to keep the system neat & tidy while traveling. This system is designed for cold water use only.

Available filters are the CeraPlus™, CeraCarb™ and CeraMetix®-GF.

Pioneer SS™

The Pioneer SS™ is manufactured from polished stainless steel and can accommodate up to 4 ceramic filter candles. The Pioneer SS™ is very easy to assemble, requiring no tools to set up. The upper chamber neatly nests into the lower chamber making for easy transport of the unit. The Pioneer SS™ is a 4.5 gallon/17 liter unit, each chamber holds 2.25 gallons. This system is designed for cold water use only.

Available filters are the CeraPlus™, CeraCarb™ and CeraMetix®-GF.



CeraGrav LP5™

The CeraGrav LP5™ is manufactured from FDA approved, high density polyethylene which makes the unit very durable and extremely lightweight. The CeraGrav LP5™ will accommodate up to 5 Slimline or Imperial filter candles, allowing this system to provide safe, clean water for large families or emergency relief. The CeraGrav LP5™ is a 7 gallon/26 liter unit, each chamber holds 3.5 gallons.

This system is designed for cold water use only.

Available filters are the CeraPlus™, CeraCarb™ and CeraMetix®-GF.

Whole House Filters

We offer whole house filter systems designed to remove a variety of contaminants. We only use NSF certified components to build and assemble our tanks and systems, this includes the medias inside.

We use only the highest quality tanks, heads and valves on our systems to ensure each system performs to specifications.



CF Series

CF Series are non-backwash filter tanks that utilize various medias for chemical contaminant reductions.

- Carbon Systems—Chlorine, Taste & Odor reduction along with VOC's & THM's
- Fluoride & Heavy Metals
- Arsenic Reduction
- Acid Neutralizers

AquaRinse™ Series

AquaRinse™ are backwashable filter systems that utilize various medias for chemical contaminant reductions.

- Carbon Systems—Chlorine, Taste & Odor reduction along with VOC's & THM's
- Fluoride & Heavy Metals
- Arsenic Reduction
- Acid Neutralizers
- Iron & Manganese Removal
- Sulfur Removal
- Mixed Bed—Custom Applications

NoScale™ Series

NoScale™ Series are non-backwash salt-free scale prevention systems

- FSC NoScale™ Salt-Free Conditioners
- RS-CITY NoScale™ Salt-Free Conditioner with CF Series Carbon Tank

AquaSoft™ Series

AquaSoft™ Water Softeners feature traditional ion exchange

- SeriesOne—IMDT (Intelligent Meter Demand Technology) Fully Automatic—10 Year Warranty
- Diamond—IMDT (Intelligent Meter Demand Technology) TPC (Total Programming Control) and fine mesh resin—15 Year Warranty



AquaCera

water filtration technology



www.aquacera.com

