



1/8" FLOW SIZE
LEGACY METAL LATCH
20AC Series

Nordson MEDICAL's LinkTech line of 20AC quick connect couplings are produced in a durable natural acetal (POM) thermoplastic. These couplings are resistant to most mild chemicals and are manufactured to be trouble free for many years of service. They are available with internal shut-off valves or straight through designs. They are intuitive to use and make an audible "click" when coupled. The 20AC Series couplings interconnect with all other 20PP and 20CB Series couplings as well as other similar industry thumb-latch type couplings.

FEATURES & BENEFITS

- Legacy metal thumb-latch couplings available with hose barb, PTF and threaded terminations
- Resistant to most mild chemicals
- Intuitive, easy-to-use design
- Audible click when coupled
- Available with internal shut-off valves or straight-through designs
- Interconnect with each other and with similar industry thumb-latch couplings

SPECIFICATIONS

- **Materials:**
 - Bodies & Terminations: Acetal (POM)
 - Internal Valves: Acetal (POM)
 - Internal Valve Springs: 316 Stainless Steel
 - O-rings: Buna-N (others available)
 - Thumb-latch: Stainless Steel
 - External Springs & Pins: Stainless Steel
- **Performance Ratings:**
 - Operating Pressure: Vacuum to 120psi; (8.3bar)
 - Temperature: -40°F to 180°F; (-40°C to 82°C)
 - Flow Capacity: 1/8" (3.2 mm)
 - Fits Tubing IDs: 1/16" (1.6 mm) - 1/4" (6.4 mm)

1/8" FLOW SIZE
LEGACY METAL LATCH
20AC Series



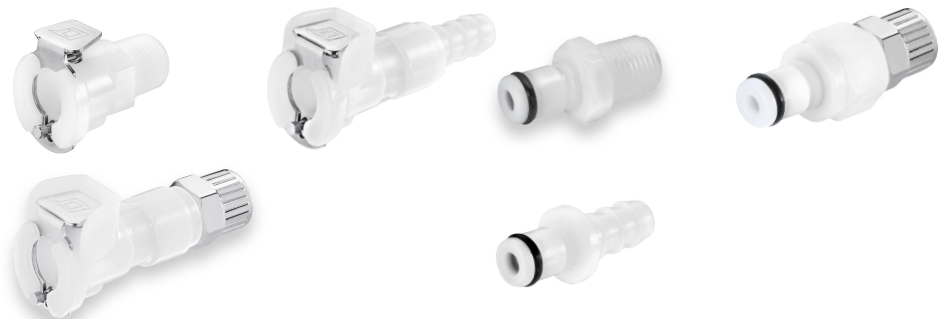
Part Style

Female Part Image

Male Part Image

Open Flow Straight

- 1/16" (1.6 mm) tube ID
- 1/8" (3.2 mm) tube ID & threaded
- 5/32" (4.0 mm) tube ID
- 3/16" (4.8 mm) tube ID
- 1/4" (6.4 mm) tube ID & threaded



Open Flow Panel Mount

- 1/16" (1.6 mm) tube ID
- 1/8" (3.2 mm) tube ID
- 3/16" (4.8 mm) tube ID
- 1/4" (6.4 mm) tube ID



Open Flow Elbow

- 1/8" (3.2 mm) tube ID
- 1/4" (6.4 mm) tube ID



Valved Straight

- 1/16" (1.6 mm) tube ID
- 1/8" (3.2 mm) tube ID & threaded
- 5/32" (4.0 mm) tube ID
- 3/16" (4.8 mm) tube ID
- 1/4" (6.4 mm) tube ID & threaded



Valved Panel Mount

- 1/16" (1.6 mm) tube ID
- 1/8" (3.2 mm) tube ID
- 3/16" (4.8 mm) tube ID
- 1/4" (6.4 mm) tube ID



Valved Elbow

- 1/8" (3.2 mm) tube ID
- 1/4" (6.4 mm) tube ID





1/8" FLOW SIZE
LEGACY METAL LATCH
20CB Series

Nordson MEDICAL's LinkTech line of 20CB quick connect couplings are produced in food grade chrome plated brass material. These couplings are more durable and withstand higher pressures. They are available with internal shut-off valves or straight through designs. They are intuitive to use and make an audible "click" when coupled. The 20CB Series couplings interconnect with all other 20AC and 20PP Series couplings as well as other similar industry thumb-latch type couplings.

FEATURES & BENEFITS

- Legacy metal thumb-latch couplings available with hose barb, PTF and threaded terminations
- Intuitive, easy-to-use design
- Audible click when coupled
- Available with internal shut-off valves or straight-through designs
- Interconnect with each other and with similar industry thumb-latch couplings

SPECIFICATIONS

- **Materials:**
 - Bodies & Terminations: Food Grade Chrome/Brass
 - Internal Valves: Acetal (POM)
 - Internal Valve Springs: 316 Stainless Steel
 - O-rings: Buna-N (others available)
 - Thumb-latch: Stainless Steel
 - External Springs & Pins: Stainless Steel
- **Performance Ratings:**
 - Operating Pressure: Vacuum to 250psi; (17.3bar)
 - Temperature: -40°F to 180°F; (-40°C to 82°C)
 - Flow Capacity: 1/8" (3.2 mm)
 - Fits Tubing IDs: 1/16" (1.6 mm) - 1/4" (6.4 mm)

1/8" FLOW SIZE
LEGACY METAL LATCH
20CB Series



QUICK CONNECT COUPLINGS

Part Style

Part Image

Open Flow Straight

1/8" (3.2 mm) tube ID & threaded
5/32" (4.0 mm) tube ID
1/4" (6.4 mm) tube ID & threaded
Female and Male



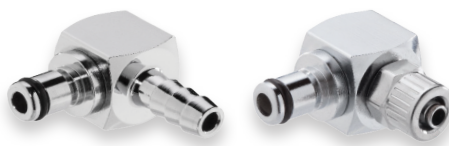
Open Flow Panel Mount

1/8" (3.2 mm) tube ID & threaded
1/4" (6.4 mm) tube ID & threaded
Female and Male



Open Flow Elbow

1/8" (3.2 mm) tube ID
1/4" (6.4 mm) tube ID
Male ONLY



Valved Straight

1/8" (3.2 mm) tube ID & threaded
10/32" threaded
1/4" (6.4 mm) tube ID & threaded
Female and Male



Valved Panel Mount

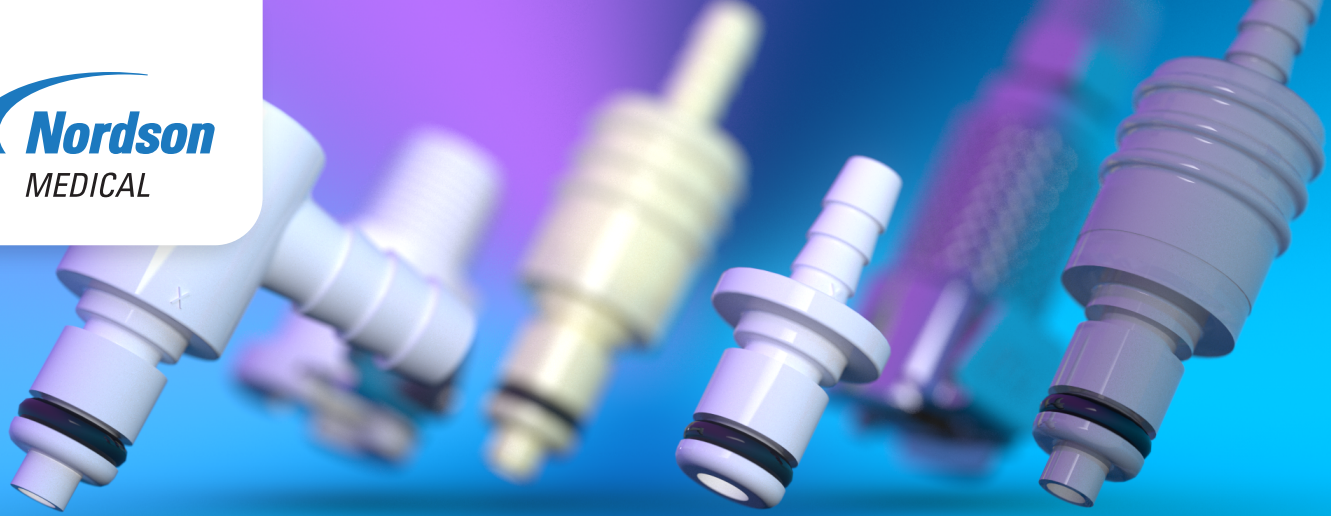
1/8" (3.2 mm) tube ID
3/16" (4.8 mm) tube ID
1/4" (6.4 mm) tube ID & threaded
Female and Male



Valved Elbow

1/4" (6.4 mm) tube ID & threaded
Male ONLY





NEW CONNECTORS FOR **IVD Technologies**

Our commitment to delivering reliable performance and innovative fluid management components is unmatched when meeting the needs of front-line workers and exceeding expectations for performance. The new 20 Series quick connects are another example of that commitment as we continue to make a positive impact during the global pandemic.

FEATURES & BENEFITS

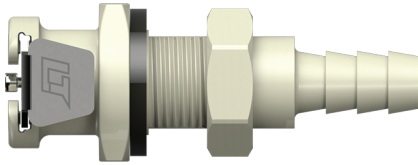
- Female polypropylene panel mount configuration with a 1/4-28 flat bottom port and hose barb terminations.
- Male polypropylene panel mount connector with a 1/4-28 flat bottom port termination.
- Gasket seal feature that enables a seal between the connector and assembly interface to prevent leaks and contamination.
- Panel nut made in non-corrosive plastic materials to prevent reaction with IVD media.

SPECIFICATIONS

- **Materials:**
 - Bodies & terminations: medical-grade polypropylene
 - Internal valves: medical-grade polypropylene
 - Internal valve springs: 316 stainless steel
 - O-rings: peroxide-cured EPDM (others available)
 - Thumb-latch: stainless steel
 - External springs & pins: stainless steel
- **Performance Ratings:**
 - Operating pressure: vacuum to 120psi; (8.3bar)
 - Temperature: 32°F to 160°F; (0°C to 71°C)
 - Flow capacity: 1/8" (3.2 mm)
 - Fits tubing IDs: 1/16" (1.6 mm) - 1/4" (6.4 mm)
 - Sterilization: gamma; 50kGy irradiation max

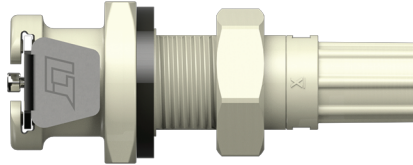
NEW CONNECTORS FOR IVD Technologies

QUICK CONNECT COUPLINGS



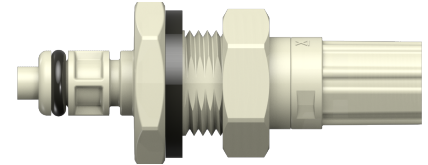
20PPV-SE3-04GSPNMALD

LinkTech 20PP Series Panel Mount, Gasket Seal Socket Female, Valved, 1/4" Hose Barb, Polypropylene, Molded Almond, EPDM O-ring and Gasket, and Polypropylene Panel Nut



20PPV-SE19-04GSPNMALD

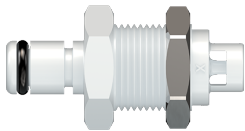
LinkTech 20PP Series Panel Mount, Gasket Seal Female, Valved, 1/4-28 Flat Bottom Port, Polypropylene, Molded Almond, EPDM O-ring and Gasket, and Polypropylene Panel Nut



20PPV-PE19-04GSPNMALD

LinkTech 20PP Series Panel Mount, Gasket Seal Plug Male, Valved, 1/4-28 Flat Bottom Port, Polypropylene, Molded Almond, EPDM O-ring and Gasket, and Polypropylene Panel Nut

More Quick Connects for IVD Applications



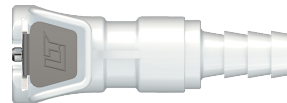
20AC-PB3-01

LinkTech 20AC Series Panel Mount Male, Non-valved, 1/16" HB, Natural Acetal, Buna N



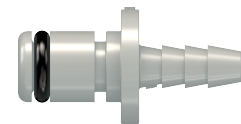
20ACV-PB2-04

LinkTech 20AC Series Straight Male, Valved, 1/4" HB, Natural Acetal, Buna N



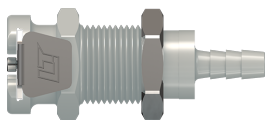
20ACV-SB2-04

LinkTech 20AC Series Straight Female, Valved, 1/4" HB, Natural Acetal, Buna N



20PP-PE2-02

LinkTech 20PP Series Straight Male, Non-valved, 1/8" HB, Molded Grey Color, Polypropylene, EPDM



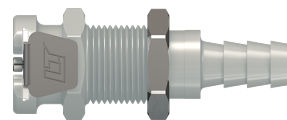
20PP-S3-02

LinkTech 20PP Series Panel Mount Female, Non-valved, 1/8" HB, Molded Grey Color, Polypropylene



20PPV-PE4-04

LinkTech 20PP Series Elbow Male, Valved, 1/4" HB, Molded Grey Color, Polypropylene, EPDM



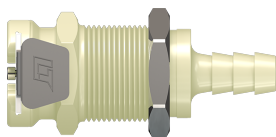
20PPV-SE3-04

LinkTech 20PP Series Panel Mount Female, Valved, 1/4" HB, Molded Grey Color, Polypropylene



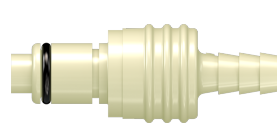
40ACV-PB17-04

LinkTech 40AC Series Straight Male, Valved, 1/4" O.D. Push-In, Natural Acetal, Buna N



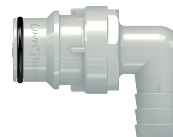
40PP-S3-04MALD

LinkTech 40PP Series Panel Mount Female, Non-valved, 1/4" HB, Molded Almond Color, Polypropylene



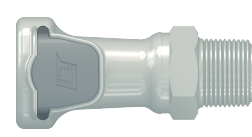
40PPV-PE2-04MALD

LinkTech 40PP Series Straight Male, Valved, 1/4" HB, Molded Almond Color, Polypropylene, EPDM



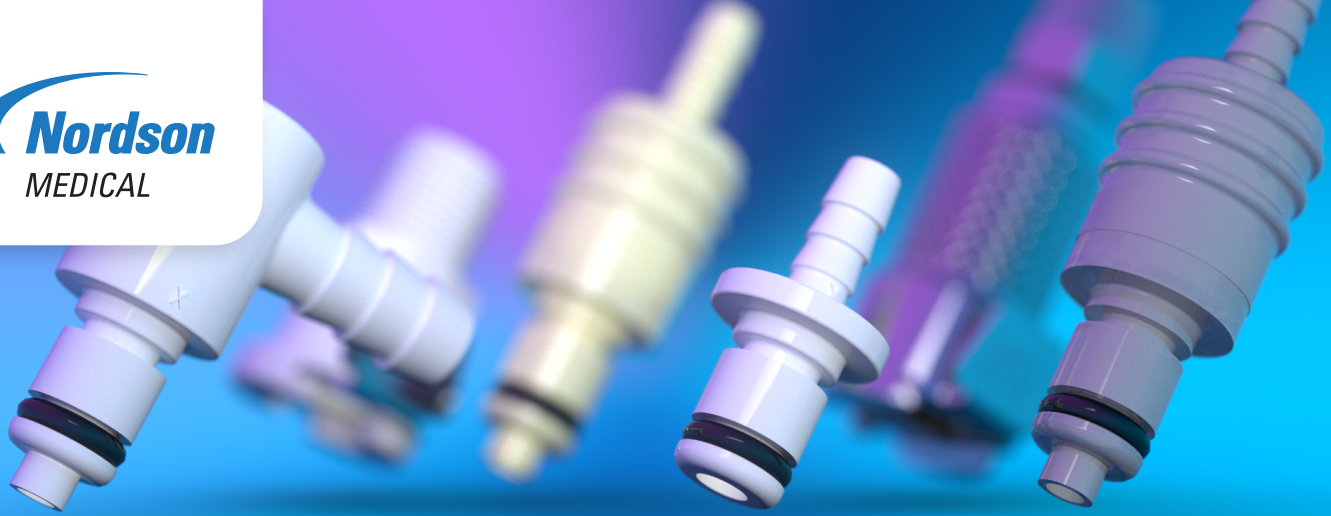
60PPV-PE4-08

LinkTech 60PP Series Elbow Male, Valved, 1/2" HB, Polypropylene, EPDM



60PPV-SE1-08

LinkTech 60PP Series Male Threaded Female, Valved, 1/2" MNPT, Polypropylene, EPDM



1/8" FLOW SIZE
LEGACY METAL LATCH
20PP Series

Nordson MEDICAL's LinkTech line of 20PP quick connect couplings are produced from medical grade, gamma sterilizable polypropylene. These legacy metal latch couplings offer greater chemical resistance. They are available with internal shut-off valves or straight through designs. They are intuitive to use and make an audible "click" when coupled. These couplings are available in Legacy Almond and Modern Cool Grey colors. The 20PP Series couplings interconnect with all other 20AC and 20CB Series couplings as well as other similar industry thumb-latch type couplings.

FEATURES & BENEFITS

- Legacy metal thumb-latch couplings available with hose barb, PTF and threaded terminations
- Offer greater chemical resistance
- Intuitive, easy-to-use design
- Audible click when coupled
- Available with internal shut-off valves or straight-through designs
- Available in 2 standard colors: almond and grey
- Interconnect with each other and with similar industry thumb-latch couplings

SPECIFICATIONS

- **Materials:**
 - Bodies & Terminations: Medical Grade Polypropylene
 - Internal Valves: Medical Grade Polypropylene
 - Internal Valve Springs: 316 Stainless Steel
 - O-rings: Peroxide-cured EPDM (others available)
 - Thumb-latch: Stainless Steel
 - External Springs & Pins: Stainless Steel
- **Performance Ratings:**
 - Operating Pressure: Vacuum to 120psi; (8.3bar)
 - Temperature: 32°F to 160°F; (0°C to 71°C)
 - Flow Capacity: 1/8" (3.2 mm)
 - Fits Tubing IDs: 1/16" (1.6 mm) - 1/4" (6.4 mm)
 - Sterilization: Gamma; 50kGy irradiation max

1/8" FLOW SIZE
LEGACY METAL LATCH
20PP Series



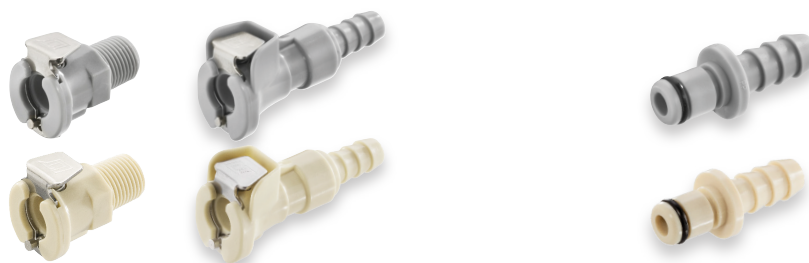
QUICK CONNECT COUPLINGS

Part Style

Part Image

Open Flow Straight

1/16" (1.6 mm) tube ID
1/8" (3.2 mm) tube ID & threaded
1/4" (6.4 mm) tube ID & threaded
Female and Male



Open Flow Panel Mount

1/16" (1.6 mm) tube ID
1/8" (3.2 mm) tube ID
5/32" (4.0 mm) tube ID
1/4" (6.4 mm) tube ID
Female ONLY



Valved Straight

1/16" (1.6 mm) tube ID
1/8" (3.2 mm) tube ID & threaded
1/4" (6.4 mm) tube ID & threaded
Female and Male



Valved Panel Mount

1/16" (1.6 mm) tube ID
1/8" (3.2 mm) tube ID
1/4" (6.4 mm) tube ID & threaded
Female ONLY



Valved Elbow

1/8" (3.2 mm) tube ID
1/4" (6.4 mm) tube ID & threaded
Male ONLY

