

# L Type - 20.0 to 100.0 L/min

## Flow Regulator - Pressure Compensating



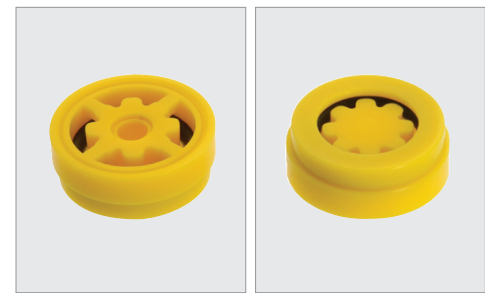
flow, stop and go®

### Features and Benefits

- ▶ Operates as a flexible orifice to provide reliable flow regulation from 15 to 150 psi.
- ▶ Noiseless and trouble free operation over many years.

### Options Available

Part #	Color	gpm	L/min
58.6640.1	Green	5.28	20.0
58.6645.1	White	6.60	25.0
58.6646.1	Yellow	7.92	30.0
58.6647.1	Orange	9.24	35.0
58.6648.1	Black	10.03	38.0
58.6650.1	Red	13.20	50.0
58.6655.1	Blue	18.48	70.0
58.6658.1	Dark Blue	23.76	90.0
58.6660.1	Black	26.40	100.0



### Certification

ANSI / NSF 61

### Materials

Name	Material
Body	Acetal
Core	Acetal
O-ring	EPDM

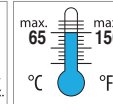
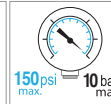
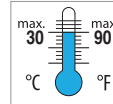
### Technical Data

Medium: Clear water only

Wetted surface area: 3185.29 mm<sup>2</sup>

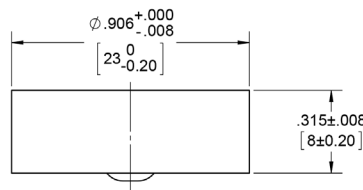
Continuous

Short-term (5 minutes max.)



### Dimensions

#### Flow Regulator Dimensions



#### Mounting Dimensions

