

# Storm

## Bottled Water Cooler



Our new Bottom-Load water dispenser is the latest model in Crystal Mountain's line of coolers. The Bottom-Load means no more lifting heavy bottles, just open the front door and the bottle slides into the base of the cooler with little effort. The Storm features an easy to remove reservoir system, that takes less than a minute to change. The LED indicator tells you when it needs to be replaced. Servicing has never been easier. With its contemporary design, attractive finish, concealed faucets and easy maintenance, the Storm is sure to dazzle in any environment.

### Features

- High gloss finish, with stainless look and Sliding front door
- Holds bottles sizes 11, 15 and 19 liters, 3,4, and 5 gallon bottles
- LED light over faucet area, LED – low water indicator light
- SmartFlo™ SF-1 Water Cartridge – replacing is simple, quick and hygienic
- Ergonomic – higher dispense point
- Energy star certified
- Commercial grade and quality construction
- Large dispensing area for coffee pots and larger water bottles





# Storm

## Bottled Water Cooler



### SmartFlo™ SF-1 Water Cartridge

**Simple:** In less than 45 seconds all water contact points are exchanged

**Quick:** In less than 45 seconds all water contact points are exchanged

**Hygienic:** All water contact points are exchanged

**100% Sanitization**



## PERFORMANCE AND SPECIFICATIONS

### General

Air cooled, bottled type water cooler

### Cooler Cabinet

Standard colour in black. Other colours available for high volume orders.

### Faucet Type

Covered mechanical style faucet system with replaceable water contact components (via SmartFlo™ SF-1 Water Cartridge), and a recessed dispensing point to protect from contamination, are extra durable and add to the stylish

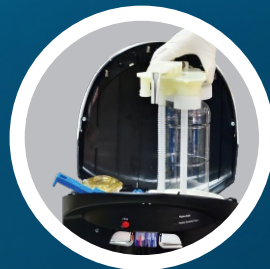
ITEM		SPECIFICATIONS
Power rating		100-115VAC 60Hz
Standard current		Hot & Cold: 4.8~5.3A
Power Consumption	Cold	70W
	Hot	500W
Cold	Refrigerant	R134a
	Temp range	39.2 -50° F
	Capacity	0.4 us gal
Hot	Temp range	168.8-197.6°F
	Capacity	0.3 us gal
Refrigerant charge		1.2 oz
Product weight		Hot & Cold: 32.0 lb
Product boxed weight		Hot & Cold: 35.7 lb
Product dimensions		12.6"(W) X 13.4"(D) X 43.9"(H)
Product boxed dimensions		13.4" (W) X 15.0" (D) X 45.9" (H)
Loading quantity		20' Container: 204 Units 40' Container: 420 Units



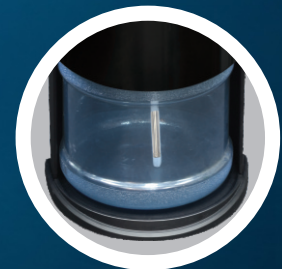
Concealed Water Outlet



Removable Drip Tray



Replaceable Reservoir System  
SmartFlo™ SF-1 Water Cartridge



Unique Sliding Front Door

©2015 Crystal Mountain Products Inc.

Crystal Mountain Products Inc. 915 Taylor Rd, Unit 3, Gahanna OH 43230  
Tel: (614) 454 1618 Fax: (614) 866 7765 www.crystalcoolers.com