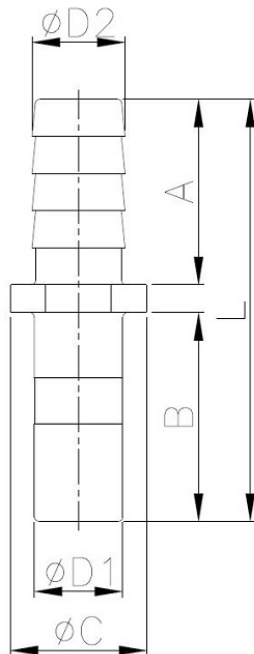


Tube Barb Connector

Pressure Ratings			
	< 5/16"	3/8"	1/2"
33 °F	290 psi	232 psi	203 psi
68 °F	290 psi	232 psi	203 psi
150 °F	232 psi	203 psi	116 psi



Model	$\phi D1$	$\phi D2$	ϕC	L	A	B	WEIGHT(g)
ATBC43	1/4	0.209	0.465	1.531	0.705	0.709	1.1
ATBC44	1/4	0.270	0.465	1.535	0.709	0.709	1.2
ATBC53	5/16	0.209	0.480	1.571	0.705	0.752	1.6
ATBC55	5/16	0.339	0.480	1.575	0.709	0.748	2.1
ATBC56	5/16	0.394	0.480	1.654	0.787	0.866	2.3
ATBC64	3/8	0.270	0.579	1.713	0.709	0.886	2.2
ATBC65	3/8	0.339	0.579	1.713	0.709	0.886	2.6
ATBC66	3/8	0.394	0.579	1.791	0.787	0.886	2.5
ATBC68	3/8	0.520	0.807	1.791	0.787	0.886	3.8
ATBC86	1/2	0.394	0.728	1.988	0.787	1.083	4.1
ATBC88	1/2	0.520	0.807	1.988	0.787	1.083	5.1