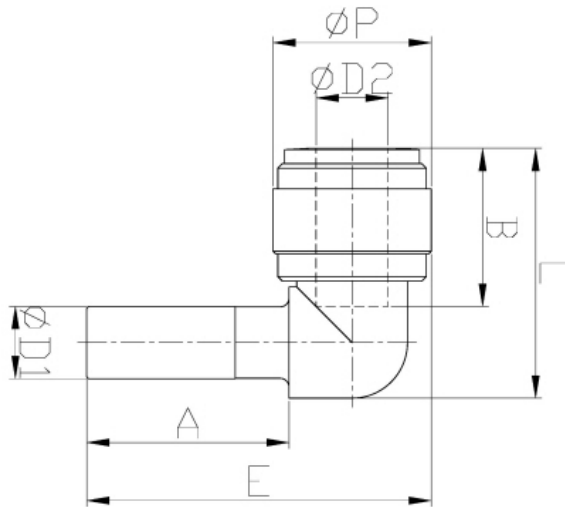


Tube Elbow Union



Pressure Ratings			
	< 5/16"	3/8"	1/2"
33 °F	290 psi	232 psi	203 psi
68 °F	290 psi	232 psi	203 psi
150 °F	232 psi	203 psi	116 psi

Model	ØD1	ØD2	ØP	A	B	E	L	WEIGHT(g)
ATEU44M	5/32	5/32	0.520	0.709	0.579	1.185	0.862	2.5
ATEU33	3/16	3/16	0.543	0.728	0.591	1.236	0.886	2.9
ATEU6M4	1/4	6mm	0.610	0.827	0.634	1.370	0.988	3.8
ATEU44	1/4	1/4	0.610	0.827	0.665	1.370	0.988	3.7
ATEU8M4	1/4	5/16	0.693	0.827	0.689	1.449	1.012	4.5
ATEU88M	5/16	5/16	0.693	0.886	0.689	1.508	1.091	5.4
ATEU64	3/8	1/4	0.610	0.976	0.665	1.520	0.988	4.5
ATEU8M6	3/8	5/16	0.787	0.976	0.689	1.701	1.220	8.1
ATEU6M6	3/8	6mm	0.610	0.976	0.634	1.520	0.988	4.5
ATEU66	3/8	3/8	0.787	0.976	0.795	1.701	1.236	7.9
ATEU88	1/2	1/2	0.929	1.161	0.988	2.016	1.543	12.7