

## WATER FILTER

### **The water “Filter Indicator” light**

- “Filter Indicator” light lets you know when it is time to change your water filter cartridge. The light will change from green to orange. This tells you that it is almost time to change the current cartridge. It is recommended that you replace the cartridge when the light changes to red or every six months. (see “Install the water filter” section on the page 26 for more information.)

### **Using the dispenser without the water filter**

- You can not use the water and ice dispenser without a water filter cartridge because the water line blocks at the water supply.

### **Ordering replacement filters**

- To order more water filter cartridges, call 1-800-SAMSUNG and ask for accessory Part # DA29-00003G or contact your authorized Samsung dealer.

## DOORS

The refrigerator doors have a special door opening and closing feature to make sure they close all the way and are securely sealed.

When opening the door, it will only open so far. After reaching a certain point, it will remain open.

When the door is partially open, it will close automatically.

# INSTALLATION OF THE WATER DISPENSER LINE

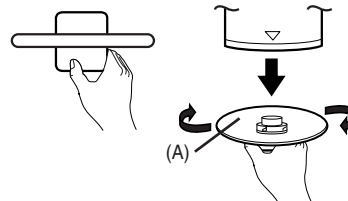


## Install the water filter.



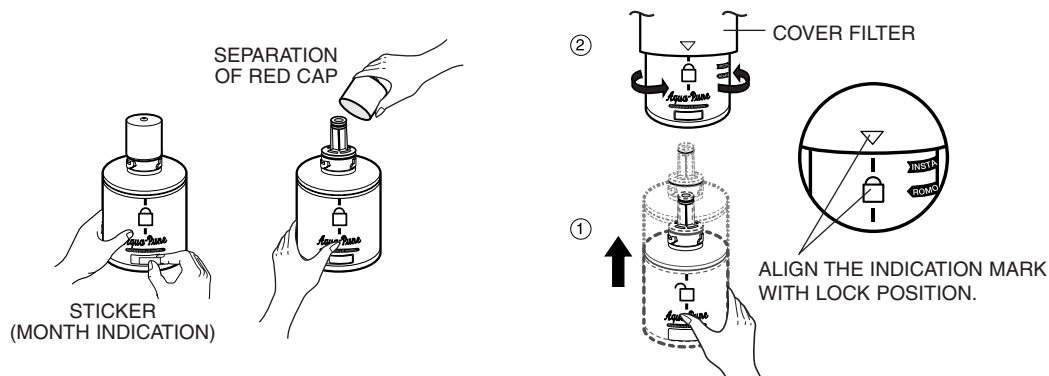
**NOTE** The water filter is located in the extra space behind the Deli Bin.

- 1) Remove the fixed cap (A) as shown. the fixed cap separates from the Water Filter Compartment by rotating it as shown.  
Remove the water filter from the box and put a month indicator stick on the filter as shown.



**NOTE** Keep the cap(A) in a safe place for recapping, when you don't need to use the filter.

- 2) If the water filter was installed in March, put on the "SEP" sticker.
- 3) Remove the Red protective cap from the filter, then position and insert the filter as shown.
- 4) Slowly turn the water filter as shown below to align the indication mark on the cover, locking the filter in position. Do not overtighten.

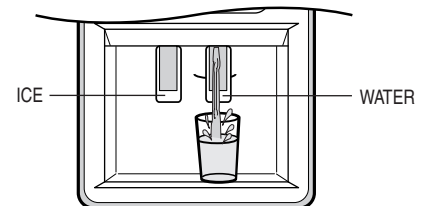


**NOTE** • Please check that the indication line aligns with the lock position.



## Remove any residual matter inside the water supply line after installing filter.

- 1) Turn on the main water supply & shut-off valve of the water supply line.
- 2) Run water through the dispenser until the water runs clear (6~7 minutes). This will clean the water supply system and clear air from the lines.
- 3) Additional flushing may be required in some households.
- 4) Open the refrigerator door and check if water leaks around the water filter.



**NOTE** • A newly-installed water filter cartridge may cause water to briefly spurt from the dispenser.