

1/16" FLOW SIZE  
TWIST LATCH  
**10AC Series**

Nordson MEDICAL's LinkTech line of 10AC quick connect couplings are produced in a durable natural Acetal (POM) thermoplastic. These couplings are resistant to most mild chemicals and are manufactured to be trouble free for many years of service. They are intuitive to use and make an audible "click" when coupled with their improved "Easy Grip Barrel." The 10AC Series couplings interconnect with the 10PP Series couplings as well as other similar industry twist lock type couplings.

## FEATURES & BENEFITS

- Twist-latch couplings available with hose barb terminations
- Resistant to most mild chemicals
- Intuitive, easy-to-use design
- Easy-grip barrel
- Audible click when coupled
- Available in white or black Acetal (POM) material
- Interconnect with each other and with similar industry twist-lock couplings

## SPECIFICATIONS

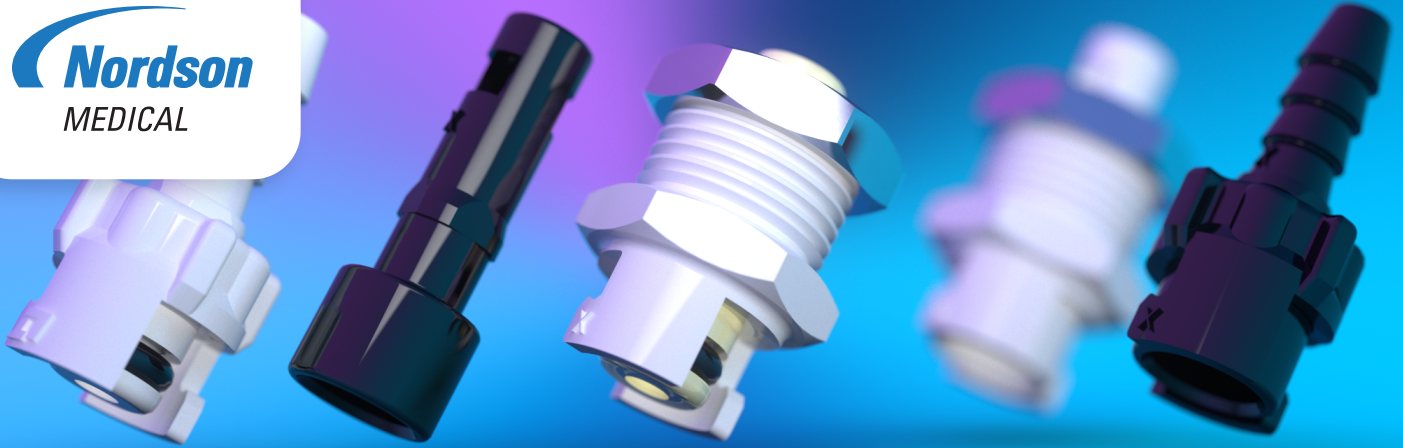
- **Materials:**
  - Bodies & Terminations: Acetal (POM)
  - Internal Valves: Acetal (POM)
  - Internal Valve Springs: 316 Stainless Steel
  - O-rings: Buna-N (others available)
  - Lock Sleeve: Acetal (POM)
- **Performance Ratings:**
  - Operating Pressure: Vacuum to 100psi; (6.9bar)
  - Temperature: -40°F to 180°F; (-40°C to 82°C)
  - Flow Capacity: 1/16" (1.6 mm)
  - Fits Tubing IDs: 1/16" (1.6 mm) - 1/8" (3.2 mm)

1/16" FLOW SIZE  
TWIST LATCH  
**10AC Series**



QUICK CONNECT COUPLINGS

Part Style	Part Image	Materials
<b>Open Flow Straight</b>  1/16" (1.6mm) tube ID 3 mm tube ID 1/8" (3.2 mm) tube ID Female and Male		White Acetal (POM) Black Acetal (POM)
<b>Open Flow Panel Mount</b>  1/16" (1.6mm) tube ID 3 mm tube ID 1/8" (3.2 mm) tube ID Female and Male		White Acetal (POM) Black Acetal (POM)
<b>Valved Straight</b>  1/16" (1.6mm) tube ID 3 mm tube ID 1/8" (3.2 mm) tube ID Female ONLY		White Acetal (POM) Black Acetal (POM)
<b>Valved Panel Mount</b>  1/16" (1.6mm) tube ID 3 mm tube ID 1/8" (3.2 mm) tube ID Female ONLY		White Acetal (POM) Black Acetal (POM)
<b>Male &amp; Female Sets</b>  3 mm tube ID Female and Male Open Flow		Black Acetal (POM)



## 1/16" FLOW SIZE TWIST LATCH **10PP Series**

Nordson MEDICAL's LinkTech line of 10PP quick connect couplings are produced from medical grade, gamma sterilizable polypropylene. These twist lock couplings offer greater chemical resistance. They are intuitive to use and make an audible "click" when coupled with their improved "Easy Grip Barrel." The 10PP Series couplings interconnect with the 10AC Series couplings as well as other similar industry twist lock type couplings.

### FEATURES & BENEFITS

- Twist-latch couplings available with hose barb terminations
- Offer greater chemical resistance
- Intuitive, easy-to-use design
- Easy-grip barrel
- Audible click when coupled
- Available in legacy almond color
- Interconnect with each other and with similar industry twist-lock couplings

### SPECIFICATIONS

- **Materials:**
  - Bodies & Terminations: Medical Grade Polypropylene
  - O-rings: Peroxide-cured EPDM (others available)
  - Lock Sleeve: Acetal (POM)
- **Performance Ratings:**
  - Operating Pressure: Vacuum to 100psi; (6.9bar)
  - Temperature: 32°F to 160°F; (0°C to 71°C)
  - Flow Capacity: 1/16" (1.6 mm)
  - Fits Tubing IDs: 1/16" (1.6 mm) - 1/8" (3.2 mm)

1/16" FLOW SIZE  
TWIST LATCH  
**10PP Series**



QUICK CONNECT COUPLINGS

Part Style	Part Image	Materials
<b>Open Flow Straight</b>  1/16" (1.6mm) tube ID 3 mm tube ID 1/8" (3.2 mm) tube ID Female and Male		Almond Polypropylene
<b>Open Flow Panel Mount</b>  1/16" (1.6mm) tube ID 3 mm tube ID 1/8" (3.2 mm) tube ID Female and Male		Almond Polypropylene