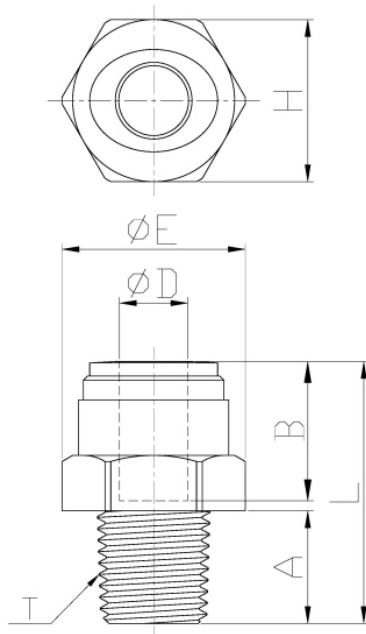


Male Connector (BSPT)

Pressure Ratings			
	< 5/16"	3/8"	1/2"
33 °F	290 psi	232 psi	203 psi
68 °F	290 psi	232 psi	203 psi
150 °F	232 psi	203 psi	116 psi

Torque Allowance					
Thread Size	1/8"	1/4"	3/8"	1/2"	3/4"
Max Torque	1.1 ft lbs	1.1 ft lbs	2.2 ft lbs	2.2 ft lbs	2.9 ft lbs



Model	ØD	T(BSPT.R)	A	B	ØE	H(Hex)	L	WEIGHT(g)
AMC4M-R1	04	1/8	9.1	14.7	18.5	17	26	4.1
AMC6M-R1	06	1/8	9.1	16.1	18.5	17	26.2	3.9
AMC6M-R2	06	1/4	13.1	16.1	18.5	17	26.7	4.2
AMC6M-R3	06	3/8	13.5	16.1	21	19	26.6	5.9
AMC6M-R4	06	1/2	16.3	16.1	24.4	22	29.7	9.1
AMC8M-R1	08	1/8	9.1	17.5	21	19	28.1	5.2
AMC8M-R2	08	1/4	13.1	17.5	21	19	30.6	5.8
AMC8M-R3	08	3/8	13.5	17.5	21	19	27	5.7
AMC8M-R4	08	1/2	16.3	17.5	24.4	22	30.2	9.2
AMC10M-R2	10	1/4	13.1	20.1	21	19	36	7.7
AMC10M-R3	10	3/8	13.5	20.1	23.2	21	28.8	6.7
AMC10M-R4	10	1/2	16.3	20.1	24.4	22	32.1	9.6
AMC12M-R3	12	3/8	13.5	24.7	26.5	24	32.2	8.9
AMC12M-R4	12	1/2	16.3	24.7	26.5	24	34.3	11