



T&S BRASS AND BRONZE WORKS, INC.

2 Saddleback Cove / P.O. Box 1088
Travelers Rest, SC 29690

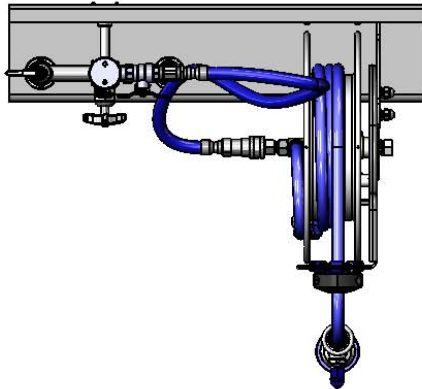
Model No.

B-1436

Item No.

Travelers Rest, SC: 800-476-4103 • Simi Valley, CA: 800-423-0150 • Fax: 864-834-3518 • www.tsbrass.com

**EPAct 2005
Non-Compliant**



Stainless Steel Backplate

Wall
Bracket

3/8" NPT x 12" Risers

Control Valve

8" Deck Mount
Mixing Faucet,
Eterna Cartridges
w/ Spring Checks
& Lever Handles
w/ Color Coded
Indexes

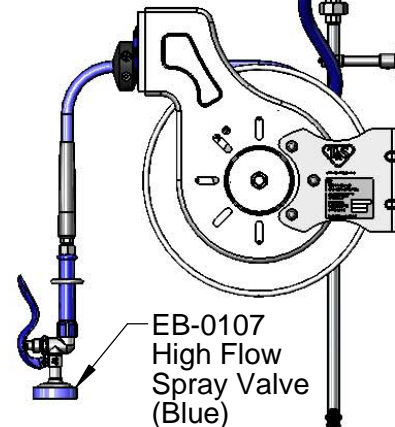
8"
[203mm]
Adjustable From
7 3/4" to 8 1/4"
[197mm to 210mm]

26"
[660mm]

B-0963
Continuous Pressure
Vacuum Breaker w/
Integral Check Valve

3/8" NPT x 24"
Flexible Water
Connector To Hose Reel

Open Stainless Steel
Hose Reel w/ 35' of 3/8" Hose
w/ Stainless Steel Quick
Disconnect



1/2" NPT
Male Supply Nipples

40 1/8"
[1019mm]

4 1/4"
[108mm]

6"
[152mm]

Product Specifications:

Open Stainless Steel Hose Reel w/ 35' of 3/8" Hose on Stainless Steel Backplate, High Flow Spray Valve (Blue), Vacuum Breaker, 3/8" NPT Flexible Water Connector, 8" Deck Mount Mixing Faucet, & Control Valve

Drawn

DHL

Checked

DMH

Approved

JHB

Scale:

1:12

Date:

07/22/13

Sheet: 1 of 2



T&S BRASS AND BRONZE WORKS, INC.

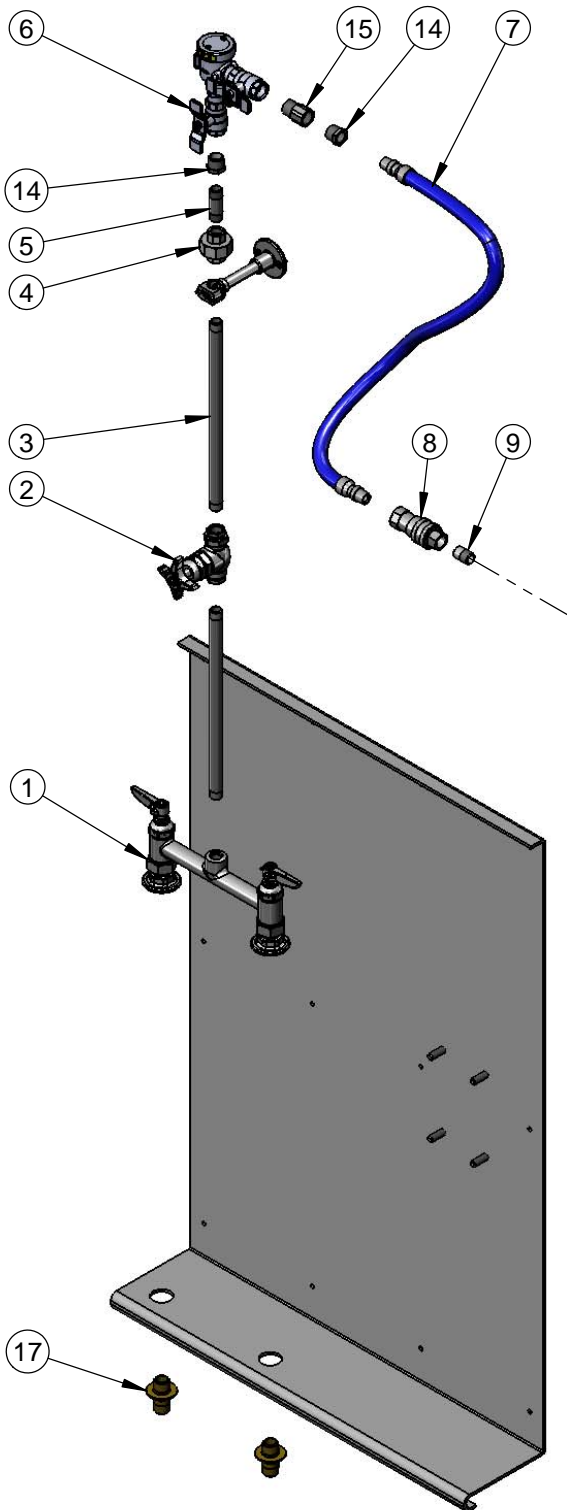
2 Saddleback Cove / P.O. Box 1088
Travelers Rest, SC 29690

Model No.

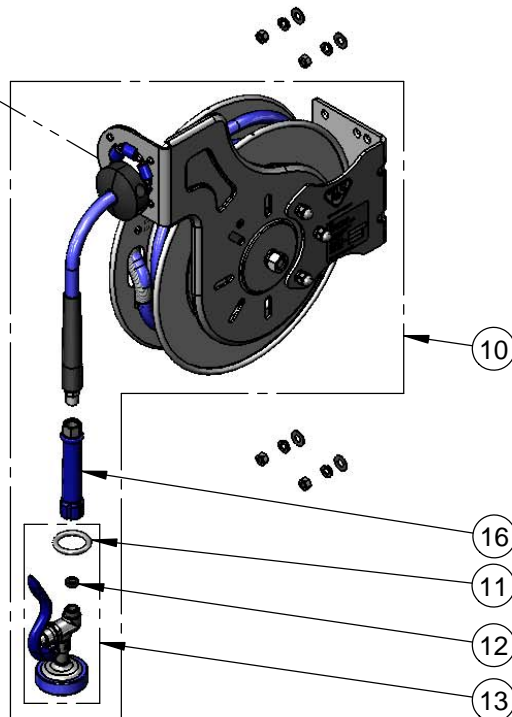
B-1436

Item No.

Travelers Rest, SC: 800-476-4103 • Simi Valley, CA: 800-423-0150 • Fax: 864-834-3518 • www.tsbrass.com



ITEM NO.	SALES NO.	DESCRIPTION
1	002829-40	8" Deck Mount Faucet
2	0RK3	Control Valve
3	145X	3/8" NPT x 12" Riser
4	002475-40	3/8" NPT Union
5	000357-40	3/8" NPT x 2" Nipple
6	B-0963	1/2" NPT Continuous Pressure VB w/ Integral Check Valve
7	HW-2B-24	3/8" NPT x 24" Flexible Water Hose
8	AW-5B	3/8" NPT Quick Disconnect
9	002535-25	3/8" NPT Close Nipple
10	B-7132-01	Open Stainless Steel 35' of 3/8" Hose
11	000907-45	Spray Valve Hold Down Ring
12	010476-45	#27 Washer
13	EB-0107	High Flow Spray Valve (Blue)
14	001359-40	1/2" NPT Male x 3/8" NPT Female Hex Bushing
15	015073-40	Check Valve w/ 1/2" NPT Adapter
16	012504-40	Grip Handle (Blue), 3/8" NPT
17	B-0425-M	1/2" NPT Supply Nipple Kit, (2)



Product Specifications:

Open Stainless Steel Hose Reel w/ 35' of 3/8" Hose on Stainless Steel Backplate, High Flow Spray Valve (Blue), Vacuum Breaker, 3/8" NPT Flexible Water Connector, 8" Deck Mount Mixing Faucet, & Control Valve

Drawn

DHL

Checked

DMH

Approved

JHB

Scale:

NTS

Date:

07/22/13