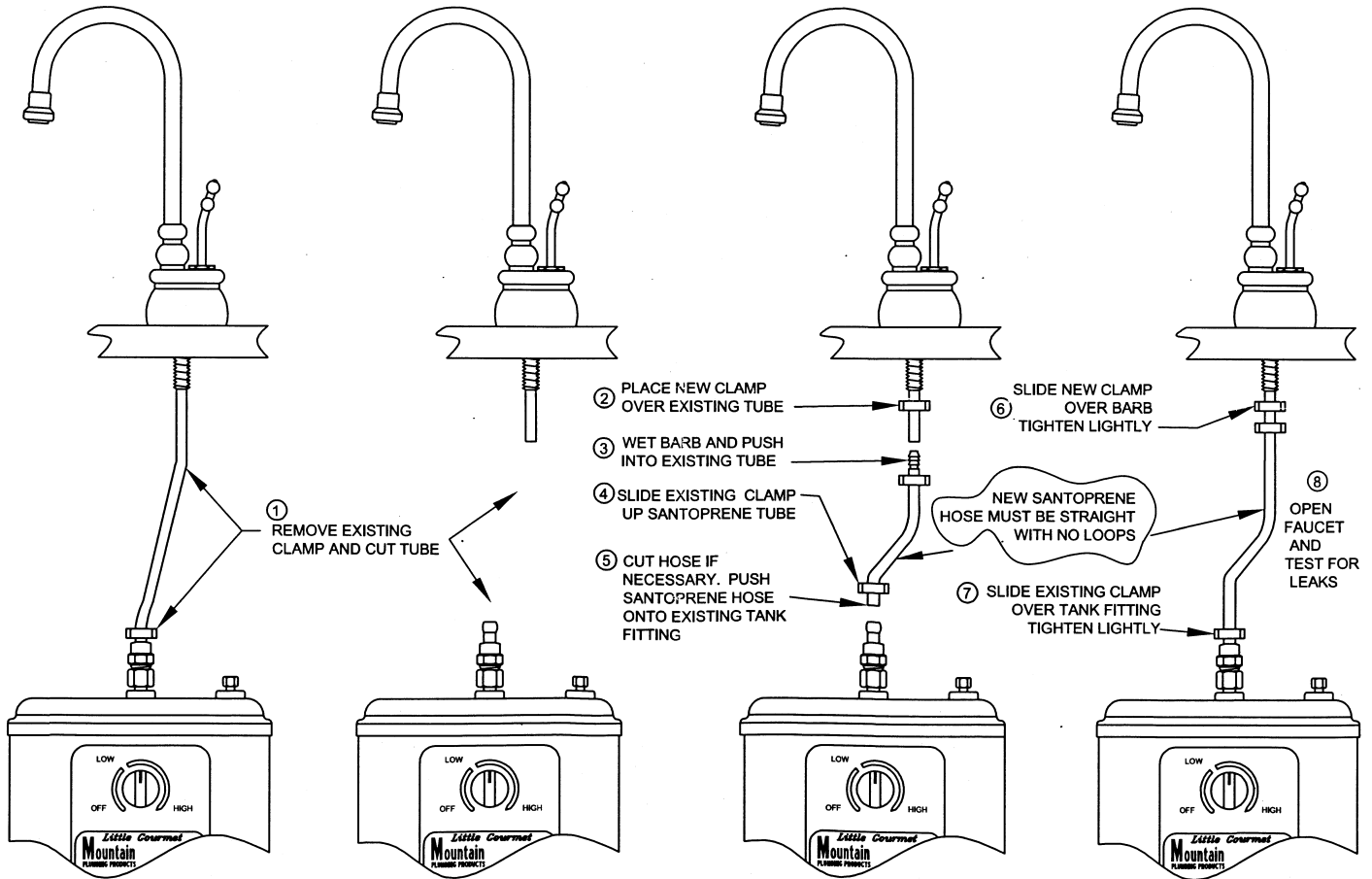


# MT540, MT550, MT640 & MT650 HOSE REPAIR KIT



① REMOVE EXISTING CLAMP AND CUT TUBE

- ② PLACE NEW CLAMP OVER EXISTING TUBE
- ③ WET BARB AND PUSH INTO EXISTING TUBE
- ④ SLIDE EXISTING CLAMP UP SANTOPRENE TUBE
- ⑤ CUT HOSE IF NECESSARY. PUSH SANTOPRENE HOSE ONTO EXISTING TANK FITTING

⑥ SLIDE NEW CLAMP OVER BARB TIGHTEN LIGHTLY

NEW SANTOPRENE HOSE MUST BE STRAIGHT WITH NO LOOPS

⑦ SLIDE EXISTING CLAMP OVER TANK FITTING TIGHTEN LIGHTLY

⑧ OPEN FAUCET AND TEST FOR LEAKS