

35 Series Quick Connect Manifold

Configuration Styles

Sea Tech Manifolds operate much like an electrical breaker box. The main water supply lines bring water into the manifold and individual distribution lines move water out to each fixture. All outlets have a built in valve which allows you the ability to stop the water flow to any single fixture without shutting down the entire water system.

The new Sea Tech Manifold System utilizes an exclusive modular design. Manifold Sections can be purchased individually and simply snapped together to create the ideal configuration for each application. Sea Tech also offers custom configured, pre-assembled manifolds.

FEATURES

Performance ratings

100psi@180°F 6.8bar@82°C
250psi@75°F 17.25bar@24°C

Complies with NSF and FDA standards

Available in custom configurations

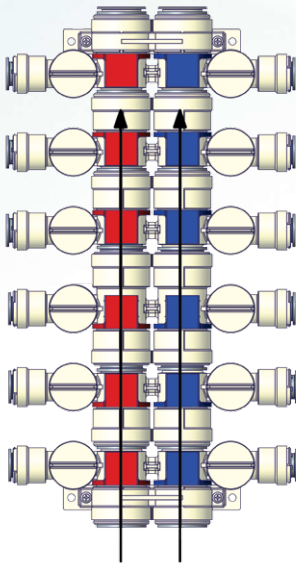
Includes mounting brackets and labels

All Inlets are 1" CTS (use a Reducing Stem to create other inlet sizes)

LEAD FREE*

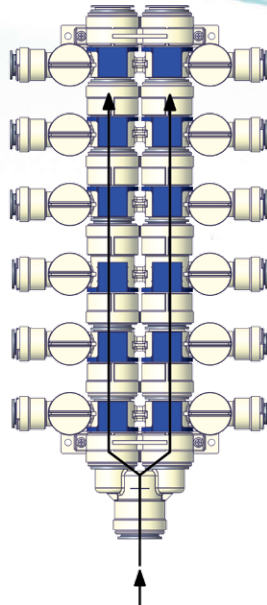
Style A

2 Quick Connect Inlets



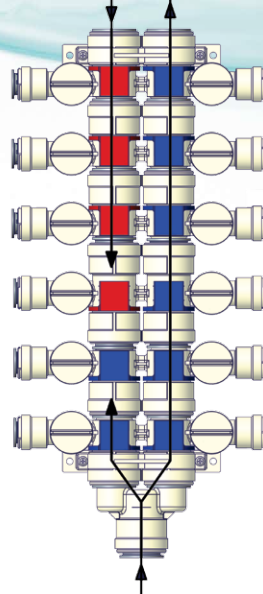
Style B

1 Quick Connect Inlet



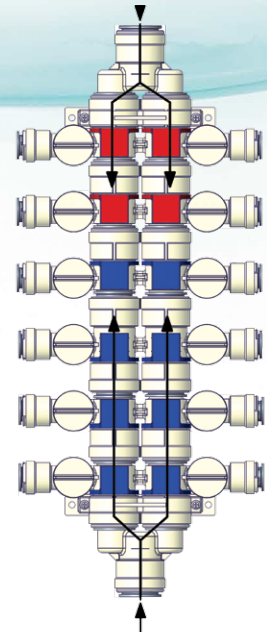
Style E

2 Quick Connect Inlets
1 Quick Connect Outlet



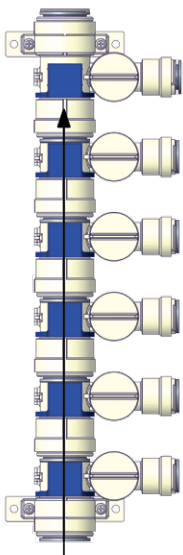
Style G

2 Quick Connect Inlets



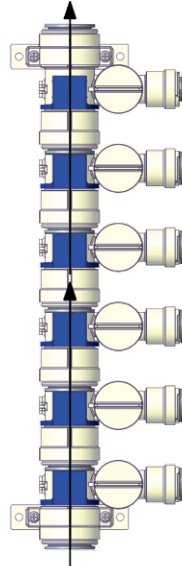
Style B

1 Quick Connect Inlet
Single Temperature
Use (Hot or Cold)



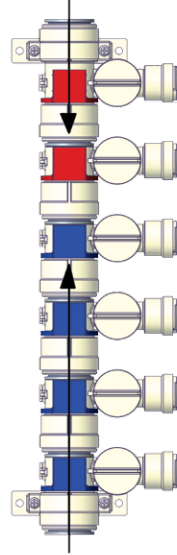
Style C

2 Quick Connect Inlets
Single Temperature
Use (Hot or Cold)



Style G

2 Quick Connect Inlets
Dual Temperature
Use (Hot & Cold)



Ordering Information

D = Dual Side Inlet Port Style
S = Single Side

35 **D** **A**-12 **06**

Total Number
of Ports

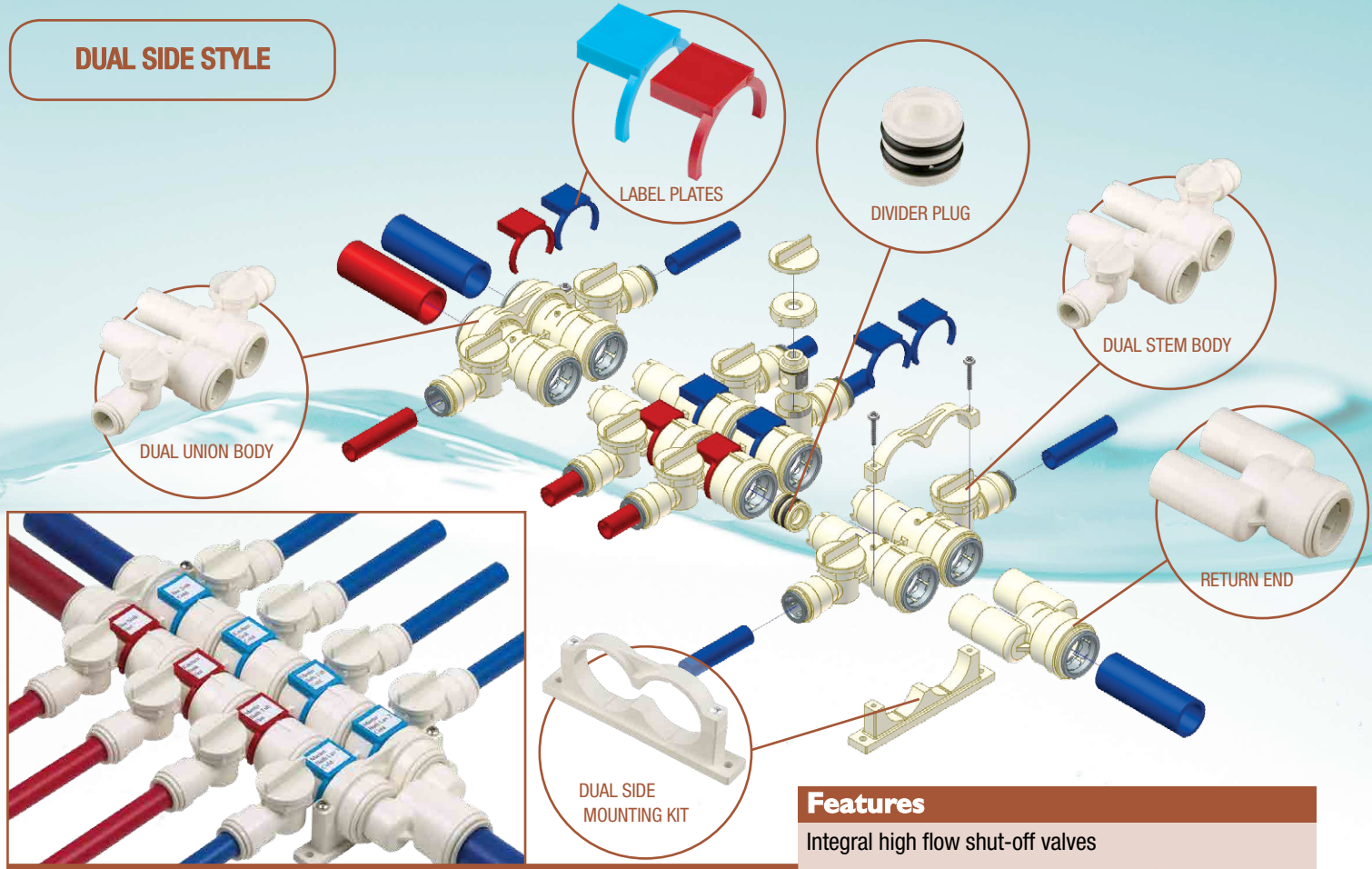
Total Number
of Cold Ports

*The wetted surface of this product contacted by consumable water contains less than 0.25% of lead by weight.

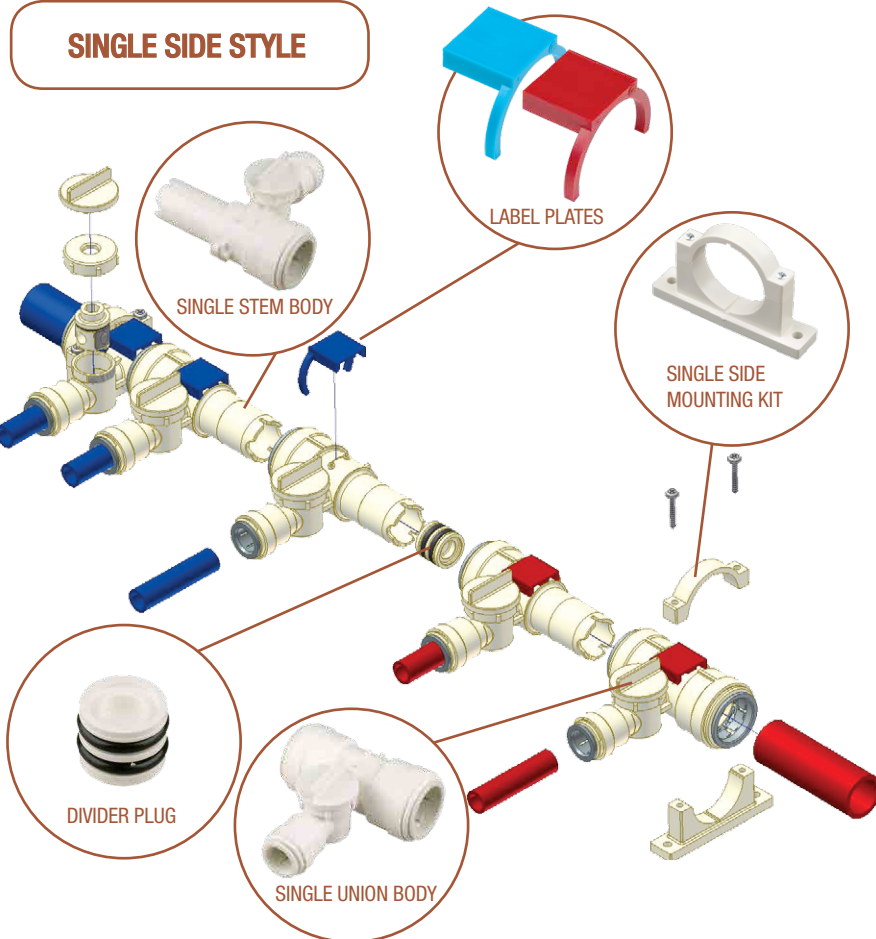
Assembly Elements

35 Series Quick-Connect Manifold

DUAL SIDE STYLE



SINGLE SIDE STYLE



Features

- Integral high flow shut-off valves
- Serviceable shut-off valves
- Eliminates fittings
- Single and Dual sections can be connected together
- Modular design allows for flexibility
- Field-configurable
- Increase water flow
- Available in single or dual outlet configurations



35 Series Quick Connect Manifold

Components

DUAL UNION BODY **LEAD FREE***



PART NO.	BODY SIZE	PORT SIZE	PACKAGE
3583-1810	1" CTS	1/2" CTS	BULK

DUAL STEM BODY **LEAD FREE***



PART NO.	BODY SIZE	PORT SIZE	PACKAGE
3584-1810	1" CTS	1/2" CTS	BULK

SINGLE UNION BODY **LEAD FREE***



PART NO.	BODY SIZE	PORT SIZE	PACKAGE
3589-1810	1" CTS	1/2" CTS	BULK

SINGLE STEM BODY, RIGHT **LEAD FREE***



PART NO.	BODY SIZE	PORT SIZE	PACKAGE
3590-1810	1" CTS	1/2" CTS	BULK

SINGLE STEM BODY, LEFT **LEAD FREE***



PART NO.	BODY SIZE	PORT SIZE	PACKAGE
3591-1810	1" CTS	1/2" CTS	BULK

REDUCING STEM **LEAD FREE***



PART NO.	STEM SIZE	TUBE SIZE	PACKAGE
3514-1814	1" CTS	3/4" CTS	BULK
3514-1810	1" CTS	1/2" CTS	BULK

END STOP **LEAD FREE***



PART NO.	TUBE SIZE	PACKAGE
3545-18	1" CTS	BULK

MANIFOLD LABELS



PART NO.	
QCHLK-01	Home Label Kit
QCMLK-01	Marine Label Kit

END PLUG **LEAD FREE***



PART NO.	STEM SIZE	PACKAGE
3546-18	1" CTS	BULK

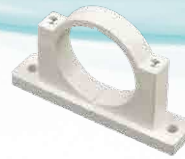
DUAL SIDE MOUNTING KIT



PART NO.	PACKAGE
3580-18	BULK

*Note: Stainless Bracket Screws Included

SINGLE SIDE MOUNTING KIT



PART NO.	PACKAGE
3581-18	BULK

*Note: Stainless Bracket Screws Included

DIVIDER PLUG **LEAD FREE***



PART NO.	PACKAGE
3582-18	BULK

RETURN END **LEAD FREE***



PART NO.	STEM SIZE	PACKAGE
3585-18	1" CTS	BULK

LABEL PLATE



PART NO.	COLOR	PACKAGE
3586-18	RED	BULK
3587-18	BLUE	BULK

VALVE REPAIR KIT **LEAD FREE***



PART NO.	SPOOL SIZE	PACKAGE
3588-10	1/2"	BULK

MANIFOLD WRENCH



PART NO.	BODY SIZE	PACKAGE
351192-18	1" CTS	BULK

*Note: For Ease of Disconnection

*The wetted surface of this product contacted by consumable water contains less than 0.25% of lead by weight.