



neoFIT
Product Catalogue



neoFIT

Table of Contents

Specification Sheet	1
Inch Acetal	2
Inch Acetal Swivel	8
Metric Acetal	10
Metric Acetal Swivel	15
Acetal Valves	16
Inch Polypropylene White	18
Polypropylene White Valves	20
Accessories	21
Chemical Compatibility	23

Technical Specifications

Reliable Product

NeoFit was established to produce fittings and valves for water, beverages and drink dispensers. NeoFit is certified by ISO9001 and ISO14001 in quality management and environmental management system. NeoFit is proud to claim that our products have been certified by NSF International against NSF/ANSI Standards 51 and 61 for material requirements.

Easy Operation

NeoFit is a one-touch connection type without tools. It provides users with a more comfortable and efficient working operation. NeoFit is highly suitable for water, beverages and drink dispensers.

Applications and Features

NeoFit products are designed for water, food, and air contact but can be used with selected gases, vacuum & liquids. Our Oval Collets provide better ergonomics; easier to operate to disconnect. A single action allows the tube to release and connect easily, saving time and expense. NeoFit products are made of NSF approved non-toxic materials. Various uses depending on the user's environment and application.

Metric Size Fitting / Inch Size Fitting / Large Size Fitting

One-touch type enabling easy to attach and detach, safe use. NBR O-ring allows excellent sealing function and high durability against leakage. Made of FDA-approved material ensuring its safety, certified as NSF 51, 61. Food and beverage fittings with oval sleeves.

Range of Products

Check Valves

Non-return valve that allows fluid to flow only in one direction. Usable for water, food, and beverage. Compact size for confined spaces. Easy to install and convenient to use.

Flow Control Valves

Valve that discharges constant flow by controlling small flow rate. Usable for water, food, and beverage. Flow rate increase/decrease controller available under any spatial changes. Securable stability under any temperature changes.

Ball Valves

Valve to open and close the supply of compressed air and water. Usable for air and water, convenient for use in confined space. Size adjustable to fit in the hose. Size adjustable to fit all tube sizes.

Filter Strainers

Usable for water, food, and beverage. Filter out fine impurities with stainless steel filter net. Easy filter installation and replacement.

Color Options

Our color options consist of black and grey—with capability of providing white.

Cartridges

Effectively inserting and using a counterpart with a cavity in the counterpart. Composed of half & full cartridges made of acetal materials.

Accessories

Locking clips, spanner wrenches, and tube supports are made of FDA-approved material ensuring its safety, certified as NSF 51, 61.

Specifications

- NeoFit products are designed for water, food, and air contact.
- Fluid type: Water, Beverages
- Working Pressure: 0-230 PSI / 0-16kgf/cm²
- Working Temperature: 34~140° F / 0~60°C
- Applicable Tube: Polyethylene(PE), Polyamide(PA), and Polyurethane(PUO).

Pressure Ratings

	1/4" (6mm)	3/8" (10mm)	1/2" (22mm)
33°F (0.6°C)	290 psi (20 bar)	232 psi (16 bar)	203 psi (14 bar)
68°F (20°C)	290 psi (20 bar)	232 psi (16 bar)	203 psi (14 bar)
150°F (65.6°C)	232 psi (16 bar)	203 psi (14 bar)	116 psi (8 bar)

Temperatures and Pressures indicated refers to NSF standard limits. Please contact our technical department for higher temperature and /or pressure application needs.

Max Torque Ratings

Thread Size	1/8"	1/4"	3/8"	1/2"	3/4"
Max Torque	1 ft/lb (1.5 Nm)	1 ft/lb (1.5 Nm)	2 ft/lb (3 Nm)	2 ft/lb (3 Nm)	3 ft/lb (4 Nm)

*Max torque ratings apply to all thread types

Acetal Fittings Construction

Acetal, also known as polyoxymethylene (POM), is a versatile engineering thermoplastic material known for its excellent mechanical properties and resistance to various environmental factors. Key features include:

High Mechanical Strength:

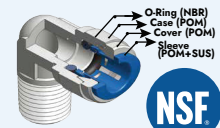
Acetal exhibits high tensile strength, making it suitable for load-bearing applications.

Chemical Resistance:

It is resistant to many chemicals, including solvents, fuels, and oils, making it suitable for various industrial applications.

FDA Approval:

Acetal grades are FDA approved for use in food contact applications due to their low toxicity and resistance to moisture absorption.



This fitting is Tested and Certified by NSF International against NSF/ANSI Standard 51, 61 for material requirements only.

Component

neoFIT

Inch Acetal

Add W to end of part number for white, -W for natural white, -E for Black, and -G for gray. Gray pictured below. Example: AMC4M-N1-W



The neoFit Acetal Fittings are manufactured with gray, black, or white acetal copolymer material meeting the requirements of FDA and NSF Standards 51 and 61. These fittings are recommended for use with water and food/beverage applications.

Max Torque Ratings					
Thread Size	1/8"	1/4"	3/8"	1/2"	3/4"
Max Torque	1 ft/lb (1.5 Nm)	1 ft/lb (1.5 Nm)	2 ft/lb (3 Nm)	2 ft/lb (3 Nm)	3 ft/lb (4 Nm)

Pressure Ratings			
	1/4" (6mm)	3/8" (10mm)	1/2" (22mm)
33°F (0.6°C)	290 psi (20 bar)	232 psi (16 bar)	203 psi (14 bar)
68°F (20°C)	290 psi (20 bar)	232 psi (16 bar)	203 psi (14 bar)
150°F (65.6°C)	232 psi (16 bar)	203 psi (14 bar)	116 psi (8 bar)

Temperatures and Pressures indicated refers to NSF standard limits, Please contact our technical department for higher temperature and /or pressure application needs.



Part Number	Tube OD	Thread NPTF	Bag Qty	Box Qty
AMC4M-N1	5/32"	1/8"	10	
AMC4M-N2	5/32"	1/4"	10	
AMC3-N1	3/16"	1/8"	10	400
AMC3-N2	3/16"	1/4"	10	
AMC4-N1	1/4"	1/8"	10	350
AMC4-N2	1/4"	1/4"	10	300
AMC4-N3	1/4"	3/8"	10	300
AMC4-N4	1/4"	1/2"	10	250
AMC8M-N1	5/16"	1/8"	10	300
AMC8M-N2	5/16"	1/4"	10	300
AMC8M-N3	5/16"	3/8"	10	
AMC8M-N4	5/16"	1/2"	10	
AMC6-N1	3/8"	1/8"	10	250
AMC6-N2	3/8"	1/4"	10	0
AMC6-N3	3/8"	3/8"	10	0
AMC6-N4	3/8"	1/2"	10	0
AMC8-N3	1/2"	3/8"	10	180
AMC8-N4	1/2"	1/2"	5	150



Part Number	Tube OD	Thread BSP(P)	Bag Qty	Box Qty
AMC4M-G1	5/32"	1/8"	10	
AMC4M-G2	5/32"	1/4"	10	
AMC3-G1	3/16"	1/8"	10	
AMC3-G2	3/16"	1/4"	10	
AMC4-G1	1/4"	1/8"	10	
AMC4-G2	1/4"	1/4"	10	
AMC8M-G1	5/16"	1/8"	10	
AMC8M-G2	5/16"	1/4"	10	
AMC8M-G3	5/16"	3/8"	10	
AMC6-G1	3/8"	1/8"	10	
AMC6-G2	3/8"	1/4"	10	300
AMC6-G3	3/8"	3/8"	10	
AMC6-G4	3/8"	1/2"	10	
AMC8-G3	1/2"	3/8"	10	
AMC8-G4	1/2"	1/2"	10	



Part Number	Tube OD	Thread BSPT	Bag Qty	Box Qty
AMC4M-R1	5/32"	1/8"	10	
AMC4M-R2	5/32"	1/4"	10	
AMC3-R1	3/16"	1/8"	10	
AMC3-R2	3/16"	1/4"	10	
AMC4-R1	1/4"	1/8"	10	400
AMC4-R2	1/4"	1/4"	10	350
AMC4-R3	1/4"	3/8"	10	
AMC4-R4	1/4"	1/2"	10	
AMC8M-R1	5/16"	1/8"	10	
AMC8M-R2	5/16"	1/4"	10	
AMC8M-R3	5/16"	3/8"	10	
AMC6-R1	3/8"	1/8"	10	
AMC6-R2	3/8"	1/4"	10	
AMC6-R3	3/8"	3/8"	10	
AMC6-R4	3/8"	1/2"	10	
AMC8-R3	1/2"	3/8"	10	
AMC8-R4	1/2"	1/2"	10	

NeoFit Fittings Inch Acetal

Add **W** to end of part number for white, **-W** for natural white, **-E** for Black, and **-G** for gray. Gray pictured below. Example: **AMC4M-N1-W**

Male Connector
Big O Ring BSP(P)



Part Number	Tube OD	Thread BSP(P)	Bag Qty	Box Qty
AMCB3-G1	3/8"	1/8"	10	
AMCB3-G2	3/8"	1/4"	10	

Male Connector
MFL Thread



Part Number	Tube OD	Thread MFL	Bag Qty	Box Qty
AMC8M-FL5	5/16"	5/16"	10	
AMC6-FL4	3/8"	1/4"	10	
AMC8M-FL8	5/16"	1/2"	10	

Male Connector
BSW Thread



Part Number	Tube OD	Thread BSW	Bag Qty	Box Qty
AMC4-BW9	1/4"	9/16"	10	
AMC8M-BW8	5/16"	1/2"	10	
AMC8M-BW9	5/16"	9/16"	10	
AMC6-BW8	3/8"	1/2"	10	
AMC6-BW9	3/8"	9/16"	10	

Male Elbow
NPTF



Part Number	Tube OD	Thread NPTF	Bag Qty	Box Qty
AME4M-N1	5/32"	1/8"	10	
AME3-N1	3/16"	1/8"	10	
AME4-N1	1/4"	1/8"	10	400
AME4-N2	1/4"	1/4"	10	300
AME4-N3	1/4"	3/8"	10	300
AME8M-N2	5/16"	1/4"	10	
AME8M-N3	5/16"	3/8"	10	
AME6-N2	3/8"	1/4"	10	250
AME6-N3	3/8"	3/8"	10	250
AME6-N4	3/8"	1/2"	10	
AME8-N3	1/2"	3/8"	5	150
AME8-N4	1/2"	1/2"	5	120

Elbow Union
Tube



Part Number	Tube OD	Tube OD	Bag Qty	Box Qty
AEU44M	5/32"	5/32"	10	
AEU33	3/16"	3/16"	10	
AEU44	1/4"	1/4"	10	300
AEU84M	5/16"	5/32"	10	
AEU8M2	5/16"	3/16"	10	
AEU8M4	5/16"	1/4"	10	
AEU88M	5/16"	5/16"	10	
AEU63	3/8"	3/16"	10	
AEU64	3/8"	1/4"	10	200
AEU8M6	3/8"	5/16"	10	200
AEU66	3/8"	3/8"	10	200
AEU68	3/8"	1/2"	10	
AEU84	1/2"	1/4"	10	
AEU8M8	1/2"	5/16"	10	
AEU86	1/2"	3/8"	5	0
AEU88	1/2"	1/2"	5	0

Tube Elbow Union



Part Number	Tube OD	Stem OD	Bag Qty	Box Qty
ATEU44M	5/32"	5/32"	10	
ATEU33	3/16"	3/16"	10	
ATEU36	3/16"	3/8"	10	
ATEU44	1/4"	1/4"	10	0
ATEU48M	5/16"	1/4"	10	
ATEU46	1/4"	3/8"	10	350
ATEU88M	5/16"	5/16"	10	
ATEU8M6	5/16"	3/8"	10	300
ATEU66	3/8"	3/8"	10	0
ATEU68	3/8"	1/2"	10	
ATEU88	1/2"	1/2"	5	125

NeoFit Fittings Inch Acetal

Add W to end of part number for white, -W for natural white, -E for Black, and -G for gray. Gray pictured below. Example: AMC4M-N1-W

Stem Adapter NPTF



Part Number	Stem OD	Thread NPTF	Bag Qty	Box Qty
ASA4M-N1	5/32"	1/8"	10	550
ASA4M-N2	5/32"	1/4"	10	450
ASA3-N1	3/16"	1/8"	10	500
ASA4-N1	1/4"	1/8"	10	400
ASA4-N2	1/4"	1/4"	10	300
ASA8M-N1	5/16"	1/8"	10	400
ASA8M-N2	5/16"	1/4"	10	400
ASA8M-N3	5/16"	3/8"	10	250
ASA6-N2	3/8"	1/4"	10	300
ASA6-N3	3/8"	3/8"	10	300
ASA8-N3	1/2"	3/8"	10	250
ASA8-N4	1/2"	1/2"	5	125

Stem Adapter BSPT



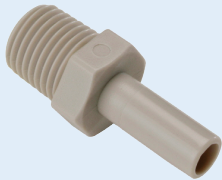
Part Number	Stem OD	Thread BSPT	Bag Qty	Box Qty
ASA3-R1	3/16"	1/8"	10	
ASA8M-R2	5/16"	1/4"	10	
ASA8M-R3	5/16"	3/8"	10	
ASA6-R2	3/8"	1/4"	10	
ASA6-R3	3/8"	3/8"	10	
ASA8-R4	1/2"	1/2"	10	

Stem Adapter BSW



Part Number	Stem OD	Thread BSW	Bag Qty	Box Qty
ASA8M-BW9	5/16"	9/16"	10	
ASA6-BW8	3/8"	1/2"	10	
ASA6-BW9	3/8"	9/16"	10	

Stem Adapter BSP (P)



Part Number	Stem OD	Thread BSP(P)	Bag Qty	Box Qty
ASA6-G2	3/8"	1/4"	10	
ASA6-G3	3/8"	3/8"	10	
ASA6-G4	3/8"	1/2"	10	
ASA8-G4	1/2"	1/2"	10	

Female Adapter NPTF



Part Number	Tube OD	Thread NPTF	Bag Qty	Box Qty
AFA4-N1	1/4"	1/8"	10	
AFA4-N2	1/4"	1/4"	10	250
AFA8M-N1	5/16"	1/8"	10	
AFA8M-N2	5/16"	1/4"	10	
AFA6-N1	3/8"	1/8"	10	
AFA6-N2	3/8"	1/4"	10	250

Female Faucet Adapter UNS Cone Type



Part Number	Tube OD	Thread UNS	Bag Qty	Box Qty
AFAC4-US7	1/4"	7/16-24	10	300
AFAC8M-US7	5/16"	7/16-24	10	
AFAC6-US7	3/8"	7/16-24	10	250

Female Adapter BSP(P) Flat Type Brass



Part Number	Tube OD	Thread BSP(P)	Bag Qty	Box Qty
AFAFB4-G4	1/4"	1/2"	10	
AFAFB4-G6	1/4"	3/4"	10	
AFAF8M-G6	5/16"	3/4"	10	
AFAFB6-G6	3/8"	3/4"	10	

Female Adapter UN V-Type



Part Number	Tube OD	Thread UN-V	Bag Qty	Box Qty
AFAV8M-UN8	5/16"	1/2-16	10	
AFAV6-UN8	3/8"	1/2-16	10	
AFAV8-UN8	1/2"	1/2-16	10	

Female Adapter Garden Hose FGHT



Part Number	Tube OD	Thread FGHT	Bag Qty	Box Qty
AFA4-NH6	1/4"	3/4"	5	
AFA8M-NH6	5/16"	3/4"	10	
AFA6-NH6	3/8"	3/4"	5	

NeoFit Fittings Inch Acetal

Add W to end of part number for white, -W for natural white, -E for Black, and -G for gray. Gray pictured below. Example: AMC4M-N1-W

Female Adapter
UNF Cone Type



Part Number	Tube OD	Thread UNF	Bag Qty	Box Qty
AFAC4-UF7	1/4"	7/16-20	10	300
AFAC8M-UF7	5/16"	7/16-20	10	
AFAC6-UF7	3/8"	7/16-20	10	250

Female Adapter
BSP(P) Flat Type



Part Number	Tube OD	Thread BSP(P)	Bag Qty	Box Qty
AFAF8M-G5	5/16"	5/8	10	
AFAF6-G3	3/8"	3/8	10	
AFAF6-G4	3/8"	1/2	10	
AFAF6-G5	3/8"	5/8	10	
AFAF8-G3	1/2"	3/8	10	
AFAF8-G4	1/2"	1/2"	10	
AFAF8-G5	1/2"	5/8"	10	

Female Adapter
BSP(P) Cone Type



Part Number	Tube OD	Thread BSP(P)	Bag Qty	Box Qty
AFAC4-G3	1/4"	3/8	10	200
AFAC4-G4	1/4"	1/2"	5	100
AFAC8M-G3	5/16"	3/8	10	
AFAC8M-G4	5/16"	1/2"	10	
AFAC6-G3	3/8"	3/8	5	150
AFAC6-G4	3/8"	1/2"	5	130
AFAC6-G5	3/8"	5/8	10	
AFAC8-G5	1/2"	5/8	10	
AFAC8-G4	1/2"	1/2	10	

Female Adapter
UNF V Type



Part Number	Tube OD	Thread UNF-V	Bag Qty	Box Qty
AFAV4-UF7	1/4"	7/16-20	10	
AFAV8M-UF7	5/16"	7/16-20	10	
AFAV6-UF7	3/8"	7/16-20	10	
AFAV6-UF10	3/8"	5/8"-18	10	

Both Female Union 3/4" Adapter
BSP(P)



Part Number	Tube OD	Thread BSP(P)	Bag Qty	Box Qty
AFUG2-G6	1/4"	3/4"	10	

Enlarger



Part Number	Tube OD	Stem OD	Bag Qty	Box Qty
AEL8M6	3/8"	5/16"	10	
AEL86	1/2"	3/8"	10	

Offset Connector



Part Number	Tube OD	Tube OD	Bag Qty	Box Qty
AOC64	3/8"	1/4"	10	
AOC8M8	1/2"	5/16"	10	

Stackable Tee



Part Number	Tube OD	Stem OD	Bag Qty	Box Qty
ATRU444	1/4"	1/4"	10	300
ATRU666	3/8"	3/8"	5	130
ATRU888	1/2"	1/2"	5	90

Branch Stem Tee



Part Number	Tube OD	Stem OD	Bag Qty	Box Qty
ATBU444	1/4"	1/4"	10	
ATBU666	3/8"	3/8"	5	
ATBU888	1/2"	1/2"	5	

NeoFit Fittings Inch Acetal

Add **W** to end of part number for white, **-W** for natural white, **-E** for Black, and **-G** for gray. Gray pictured below. Example: **AMC4M-N1-W**

Three Way Divider



Part Number	Tube OD	Tube OD	Bag Qty	Box Qty
ATHWD64	3/8"	1/4"	10	
ATHWD86	1/2"	3/8"	20	60
ATHWD88	1/2"	1/2"	20	40

U Bend



Part Number	Tube OD	Tube OD	Bag Qty	Box Qty
AUB44	1/4"	1/4"	10	
AUB88M	5/16"	5/16"	10	
AUB66	3/8"	3/8"	5	100
AUB88	1/2"	1/2"	5	80

Two Way Divider



Part Number	Tube OD	Tube OD	Bag Qty	Box Qty
ATWD44M	5/32"	5/32"	10	
ATWD44	1/4"	1/4"	10	250
ATWD88M	5/16"	5/16"	10	
ATWD8M6	3/8"	5/16"	10	
ATWD66	3/8"	3/8"	5	125
ATWD68	3/8"	1/2"	10	
ATWD88	1/2"	1/2"	20	80

Tube End Stop



Part Number	Tube OD	Bag Qty	Box Qty
ATES4M	5/32"	10	
ATES3	3/16"	10	
ATES4	1/4"	10	450
ATES8M	5/16"	10	
ATES6	3/8"	10	300
ATES8	1/2"	10	250
ATES10	5/8"	10	

Bulkhead Union



Part Number	Tube OD	Tube OD	Bag Qty	Box Qty
ABU44M	5/32"	5/32"	10	
ABU33	3/16"	3/16"	10	
ABU44	1/4"	1/4"	10	250
ABU46	1/4"	3/8"	10	
ABU88M	5/16"	5/16"	10	
ABU64	3/8"	1/4"	5	100
ABU66	3/8"	3/8"	5	100
ABU88	1/2"	1/2"	5	80

Plug



Part Number	Tube OD	Bag Qty	Box Qty
APL4M	5/32"	10	
APL3	3/16"	10	
APL4	1/4"	10	550
APL8M	5/16"	10	
APL6	3/8"	10	400
APL8	1/2"	10	300

Cross



Part Number	Tube OD	Tube OD	Bag Qty	Box Qty
ACR44M	5/32"	5/32"	10	
ACR44	1/4"	1/4"	10	
ACR88M	5/16"	5/16"	10	
ACR66	3/8"	3/8"	10	
ACR88	1/2"	1/2"	10	

Cooling Manifold



Part Number	Tube OD	Tube OD	Bag Qty	Box Qty
ACMT868	1/2"	3/8"	5	60

NeoFit Fittings Inch Acetal

Add W to end of part number for white, -W for natural white, -E for Black, and -G for gray. Gray pictured below. Example: AMC4M-N1-W

Union Connector



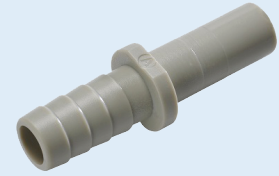
Part Number	Tube OD	Tube OD	Bag Qty	Box Qty
AUC44M	5/32"	5/32"	10	
AUC33	3/16"	3/16"	10	
AUC4M4	1/4"	5/32"	10	
AUC43	1/4"	3/16"	10	
AUC44	1/4"	1/4"	10	300
AUC84M	5/16"	5/32"	10	
AUC8M3	5/16"	3/16"	10	
AUC8M4	5/16"	1/4"	10	300
AUC88M	5/16"	5/16"	10	
AUC4M6	3/8"	5/32"	10	
AUC63	3/8"	3/16"	10	
AUC64	3/8"	1/4"	10	250
AUC68M	3/8"	5/16"	10	250
AUC66	3/8"	3/8"	10	200
AUC68	3/8"	1/2"	10	
AUC75M6	3/8"	7.5 mm	10	
AUC8M8	1/2"	5/16"	10	
AUC86	1/2"	3/8"	5	130
AUC88	1/2"	1/2"	5	0
AUC12M6	12 mm	3/8"	10	

Reducer



Part Number	Tube OD	Stem OD	Bag Qty	Box Qty
ARD4M4	5/32"	1/4"	10	500
ARD8M4	1/4"	5/16"	10	450
ARD46	1/4"	3/8"	10	350
ARD8M6	3/8"	5/16"	10	300
ARD63	3/16"	3/8"	10	400
ARD65	5/16"	3/8"	10	300
ARD68	1/2"	3/8"	10	200
ARD8M8	5/16"	1/2"	5	
ARD86	3/8"	1/2"	5	200

Stem Barb Connector



Part Number	Stem OD	Barb ID	Bag Qty	Box Qty
ATBC43	1/4"	3/16"	10	500
ATBC44	1/4"	1/4"	10	400
ATBC88M	5/16"	5/16"	10	400
ATBC8M6	5/16"	3/8"	10	400
ATBC64	3/8"	1/4"	10	400
ATBC68M	3/8"	5/16"	10	400
ATBC66	3/8"	3/8"	10	400
ATBC68	3/8"	1/2"	10	250
ATBC86	1/2"	3/8"	10	300
ATBC88	1/2"	1/2"	10	250

Stem Barb Elbow Connector



Part Number	Stem OD	Barb ID	Bag Qty	Box Qty
ATEB8M4	5/16"	1/4"	10	
ATEB68M	3/8"	5/16"	10	350
ATEB66	3/8"	3/8"	10	350

Add W to end of part number for white, -W for natural white, -E for Black, and -G for gray. Gray pictured below. Example: AMC4M-N1-W

neofIT

Inch Acetal Swivel



NSF 51
NSF 61

The neoFit Acetal Fittings are manufactured with gray, black, or white acetal copolymer material meeting the requirements of FDA and NSF Standards 51 and 61. These fittings are recommended for use with water and food/beverage applications. Swivel fittings allow the tube connection to be oriented in any direction while allowing the threaded end to be tightened to proper torque allowance. Swivel fittings are packaged as two separate pieces and require the user to assemble.

Max Torque Ratings					
Thread Size	1/8"	1/4"	3/8"	1/2"	3/4"
Max Torque	1 ft/lb (1.5 Nm)	1 ft/lb (1.5 Nm)	2 ft/lb (3 Nm)	2 ft/lb (3 Nm)	3 ft/lb (4 Nm)

Pressure Ratings			
	1/4" (6mm)	3/8" (10mm)	1/2" (22mm)
33°F (0.6°C)	290 psi (20 bar)	232 psi (16 bar)	203 psi (14 bar)
68°F (20°C)	290 psi (20 bar)	232 psi (16 bar)	203 psi (14 bar)
150°F (65.6°C)	232 psi (16 bar)	203 psi (14 bar)	116 psi (8 bar)

Temperatures and Pressures indicated refers to NSF standard limits, Please contact our technical department for higher temperature and /or pressure application needs.

Male Branch Tee Swivel
NPTF



Part Number	Tube OD	Thread NPTF	Bag Qty	Box Qty
AMTS4M-N1	5/32"	1/8"	10	
AMTS4M-N2	5/32"	1/4"	10	
AMTS3-N1	3/16"	1/8"	10	
AMTS4-N1	1/4"	1/8"	10	
AMTS4-N2	1/4"	1/4"	10	
AMTS8M-N1	5/16"	1/8"	10	
AMTS8M-N2	5/16"	1/4"	10	
AMTS8M-N3	5/16"	3/8"	10	
AMTS6-N2	3/8"	1/4"	10	
AMTS6-N3	3/8"	3/8"	10	
AMTS8-N3	1/2"	3/8"	10	
AMTS8-N4	1/2"	1/2"	10	

Male Run Tee Swivel
NPTF



Part Number	Tube OD	Thread NPTF	Bag Qty	Box Qty
AMRS4M-N1	5/32"	1/8"	10	
AMRS4M-N2	5/32"	1/4"	10	
AMRS3-N1	3/16"	1/8"	10	
AMRS4-N1	1/4"	1/8"	10	
AMRS4-N2	1/4"	1/4"	10	
AMRS8M-N1	5/16"	1/8"	10	
AMRS8M-N2	5/16"	1/4"	10	
AMRS8M-N3	5/16"	3/8"	10	
AMRS6-N2	3/8"	1/4"	10	
AMRS6-N3	3/8"	3/8"	10	
AMRS8-N3	1/2"	3/8"	10	
AMRS8-N4	1/2"	1/2"	10	

Male Elbow Swivel
NPTF



Part Number	Tube OD	Thread NPTF	Bag Qty	Box Qty
AMES4M-N1	5/32"	1/8"	10	
AMES3-N1	3/16"	1/8"	10	
AMES4-N1	1/4"	1/8"	10	
AMES4-N2	1/4"	1/4"	10	
AMES8M-N1	5/16"	1/8"	10	
AMES8M-N2	5/16"	1/4"	10	
AMES8M-N3	5/16"	3/8"	10	
AMES6-N2	3/8"	1/4"	10	
AMES6-N3	3/8"	3/8"	10	
AMES8-N3	1/2"	3/8"	10	
AMES8-N4	1/2"	1/2"	10	

NeoFit Fittings

Inch Acetal Swivel

Add W to end of part number for white, -W for natural white, -E for Black, and -G for gray. Gray pictured below. Example: AMC4M-N1-W



Part Number	Tube OD	Thread BPST	Bag Qty
AMES4M-R2	5/32"	1/4"	10
AMES3-R1	3/16"	1/8"	10
AMES3-R2	3/16"	1/4"	10
AMES3-R3	3/16"	3/8"	10
AMES4-R2	1/4"	1/4"	10
AMES4-R3	1/4"	3/8"	10
AMES4-R4	1/4"	1/2"	10
AMES8M-R2	5/16"	1/4"	10
AMES8M-R3	5/16"	3/8"	10
AMES8M-R4	5/16"	1/2"	10
AMES6-R3	3/8"	3/8"	10
AMES6-R4	3/8"	1/2"	10
AMES8-R4	1/2"	1/2"	10

Add W to end of part number for white, -W for natural white, -E for Black, and -G for gray. Gray pictured below. Example: AMC4M-N1-W

neoFIT

Metric Acetal



The neoFit Acetal Fittings are manufactured with gray, black, or white acetal copolymer material meeting the requirements of FDA and NSF Standards 51 and 61. These fittings are recommended for use with water and food/beverage applications.

Max Torque Ratings					
Thread Size	1/8"	1/4"	3/8"	1/2"	3/4"
Max Torque	1 ft/lb (1.5 Nm)	1 ft/lb (1.5 Nm)	2 ft/lb (3 Nm)	2 ft/lb (3 Nm)	3 ft/lb (4 Nm)

Pressure Ratings			
	1/4" (6mm)	3/8" (10mm)	1/2" (22mm)
33°F (0.6°C)	290 psi (20 bar)	232 psi (16 bar)	203 psi (14 bar)
68°F (20°C)	290 psi (20 bar)	232 psi (16 bar)	203 psi (14 bar)
150°F (65.6°C)	232 psi (16 bar)	203 psi (14 bar)	116 psi (8 bar)

Temperatures and Pressures indicated refers to NSF standard limits, Please contact our technical department for higher temperature and /or pressure application needs.

Male Connector
BSPT



Part Number	Tube OD	Thread BSPT	Bag Qty	Box Qty
AMC4M-R1	4mm	1/8"	10	
AMC4M-R2	4mm	1/4"	10	
AMC5M-R1	5mm	1/8"	10	
AMC5M-R2	5mm	1/4"	10	
AMC6M-R1	6mm	1/8"	10	
AMC6M-R2	6mm	1/4"	10	
AMC6M-R3	6mm	3/8"	10	
AMC6M-R4	6mm	1/2"	10	
AMC8M-R1	8mm	1/8"	10	
AMC8M-R2	8mm	1/4"	10	
AMC8M-R3	8mm	3/8"	10	
AMC8M-R4	8mm	1/2"	10	
AMC10M-R1	10mm	1/8"	10	
AMC10M-R2	10mm	1/4"	10	
AMC10M-R3	10mm	3/8"	10	
AMC10M-R4	10mm	1/2"	10	
AMC12M-R3	12mm	3/8"	10	
AMC12M-R4	12mm	1/2"	10	

Elbow Union



Part Number	Tube OD	Tube OD	Bag Qty	Box Qty
AEU44M	4mm	4mm	10	400
AEU88MM	5mm	5mm	10	
AEU64M	6mm	4mm	10	
AEU66M	6mm	6mm	10	
AEU84M	8mm	4mm	10	
AEU8M8M	8mm	5mm	10	
AEU86M	8mm	6mm	10	250
AEU88M	8mm	8mm	10	250
AEU105M	10mm	5mm	10	
AEU106M	10mm	6mm	10	
AEU108M	10mm	8mm	10	
AEU1010M	10mm	10mm	10	200
AEU126M	12mm	6mm	10	
AEU128M	12mm	8mm	10	
AEU1210M	12mm	10mm	5	100
AEU1212M	12mm	12mm	5	100
AEU1515M	15mm	15	5	80
AEU2222M	22mm	22	40	40
AEU2828M	28mm	28	10	

Male Elbow
BSPT



Part Number	Tube OD	Thread BSPT	Bag Qty	Box Qty
AME4M-R1	4mm	1/8"	10	
AME4M-R2	4mm	1/4"	10	
AME6M-R1	6mm	1/8"	10	
AME6M-R2	6mm	1/4"	10	
AME6M-R3	6mm	3/8"	10	
AME8M-R2	8mm	1/4"	10	
AME8M-R3	8mm	3/8"	10	
AME10M-R2	10mm	1/4"	10	
AME10M-R3	10mm	3/8"	10	
AME12M-R2	12mm	1/4"	10	
AME12M-R3	12mm	3/8"	10	
AME12M-R4	12mm	1/2"	10	

NeoFit Fittings Metric Acetal

Add W to end of part number for white, -W for natural white, -E for Black, and -G for gray. Gray pictured below. Example: AMC4M-N1-W

Male Connector BSP(P)



Part Number	Tube OD	Thread BSP(P)	Bag Qty	Box Qty
AMC4M-G1	4mm	1/8"	10	
AMC4M-G2	4mm	1/4"	10	
AMC5M-G1	5mm	1/8"	10	
AMC5M-G2	5mm	1/4"	10	
AMC6M-G1	6mm	1/8"	10	
AMC6M-G2	6mm	1/4"	10	
AMC8M-G1	8mm	1/8"	10	
AMC8M-G2	8mm	1/4"	10	
AMC8M-G3	8mm	3/8"	10	
AMC8M-G4	8mm	1/2"	10	
AMC10M-G2	10mm	1/4"	10	
AMC10M-G3	10mm	3/8"	10	
AMC10M-G4	10mm	1/2"	10	
AMC12M-G3	12mm	3/8"	10	
AMC12M-G4	12mm	1/2"	10	

Reducer



Part Number	Tube OD	Stem OD	Bag Qty	Box Qty
ARD45M	4mm	5mm	10	500
ARD46M	4mm	6mm	10	400
ARD48M	4mm	8mm	10	300
ARD56M	5mm	6mm	10	
ARD58M	5mm	8mm	10	
ARD68M	6mm	8mm	10	400
ARD88M	8mm	8mm	10	300
ARD106M	6mm	10mm	10	300
ARD1010M	10mm	10mm	10	
ARD108M	8mm	10mm	10	250
ARD128M	8mm	12mm	10	250
ARD1012M	10mm	12mm	10	250
ARD1015M	10mm	15mm	5	130
ARD1215M	12mm	15mm	5	130

Tube Elbow Union



Part Number	Tube OD	Stem OD	Bag Qty	Box Qty
ATEU44M	4mm	4mm	10	500
ATEU55M	5mm	5mm	10	
ATEU66M	6mm	6mm	10	350
ATEU68M	6mm	8mm	10	350
ATEU106M	6mm	10mm	10	250
ATEU88M	8mm	8mm	10	350
ATEU108M	8mm	10mm	10	300
ATEU1010M	10mm	10mm	10	200
ATEU1212M	12mm	12mm	5	100
ATEU1515M	15mm	15mm	5	80

Female Adapter BSP T



Part Number	Tube OD	Thread BSP T	Bag Qty	Box Qty
AFA6M-R1	6mm	1/8"	10	
AFA6M-R2	6mm	1/4"	10	
AFA8M-R1	8mm	1/8"	10	
AFA8M-R2	8mm	1/4"	10	
AFA10M-R1	10mm	1/8"	10	
AFA10M-R2	10mm	1/4"	10	

Female Adapter UN V-Type



Part Number	Tube OD	Thread UN	Bag Qty	Box Qty
AFAV8M-UN8	8mm	1/2-16	10	
AFAV10M-UN8	10mm	1/2-16	10	
AFAV12M-UN8	12mm	1/2-16	10	

Female Faucet Adapter UNF Cone Type



Part Number	Tube OD	Thread UNF	Bag Qty	Box Qty
AFAC6M-UF7	6mm	7/16-20	10	
AFAC8M-UF7	8mm	7/16-20	10	
AFAC10M-UF7	10mm	7/16-20	10	

NeoFit Fittings Metric Acetal

Add W to end of part number for white, -W for natural white, -E for Black, and -G for gray. Gray pictured below. Example: AMC4M-N1-W

Female Faucet Adapter UNS Cone Type



Part Number	Tube OD	Thread UN	Bag Qty	Box Qty
AFAC6M-US7	6mm	7/16-24	10	
AFAC8M-US7	8mm	7/16-24	10	
AFAC10M-US7	10mm	7/16-24	10	

Female Adapter BSP(P) Cone Type



Part Number	Tube OD	Thread BSP(P)	Bag Qty	Box Qty
AFAC6M-G3	6mm	3/8	10	
AFAC6M-G4	6mm	1/2"	10	
AFAC8M-G3	8mm	3/8	10	
AFAC8M-G4	8mm	1/2"	10	
AFAC10M-G3	10mm	3/8	10	
AFAC10M-G4	10mm	1/2"	10	
AFAC10M-G5	10mm	5/8	10	
AFAC12M-G5	12mm	5/8	10	

Female Adapter BSP(P) Flat Type



Part Number	Tube OD	Thread BSP(P)	Bag Qty	Box Qty
AFAF8M-G5	8mm	5/8	10	
AFAF10M-G2	10mm	1/4"	10	
AFAF10M-G4	10mm	1/2"	10	
AFAF10M-G5	10mm	5/8	10	
AFAF12M-G3	12mm	3/8	10	
AFAF12M-G4	12mm	1/2	10	
AFAF12M-G5	12mm	5/8	10	

Female Adapter BSP(P) Flat Type



Part Number	Tube OD	Thread BSP(P)	Bag Qty	Box Qty
AFA6M-G6	6mm	3/4"	10	
AFA8M-G6	8mm	3/4"	10	
AFA10M-G6	10mm	3/4"	10	

Female Adapter Garden Hose FGHT



Part Number	Tube OD	Thread FGHT	Bag Qty	Box Qty
AFA6M-NH6	6mm	3/4"	10	90
AFA8M-NH6	8mm	3/4"	10	90
AFA10M-NH6	10mm	3/4"	10	

Female Adapter UNF V Type



Part Number	Tube OD	Thread UNF	Bag Qty	Box Qty
AFAV6M-UF7	6mm	7/16-20	10	
AFAV8M-UF7	8mm	7/16-20	10	
AFAV10M-UF7	10mm	7/16-20	10	
AFAV10M-UF10	10mm	5/8-18	10	

Offset Connector



Part Number	Tube OD	Tube OD	Bag Qty	Box Qty
AOC106M	10mm	6mm	10	
AOC128M	12mm	8mm	10	

Bulkhead Union



Part Number	Tube OD	Tube OD	Bag Qty	Box Qty
ABU44M	4mm	4mm	10	300
ABU88MM	5mm	5mm	10	
ABU64M	6mm	4mm	10	250
ABU66M	6mm	6mm	10	250
ABU106M	6mm	10mm	10	
ABU86M	8mm	6mm	5	150
ABU88M	8mm	8mm	5	100
ABU1010M	10mm	10mm	5	100
ABU1212M	12mm	12mm	5	80

Cross



Part Number	Tube OD	Tube OD	Bag Qty	Box Qty
ACR44M	4mm	4mm	10	
ACR66M	6mm	6mm	10	
ACR88M	8mm	8mm	10	
ACR1010M	10mm	10mm	10	
ACR1212M	12mm	12mm	10	

NeoFit Fittings Metric Acetal

Add W to end of part number for white, -W for natural white, -E for Black, and -G for gray. Gray pictured below. Example: AMC4M-N1-W

Stem Adapter BSP(P)



Part Number	Stem OD	Thread BSP(P)	Bag Qty	Box Qty
ASA4M-G1	4mm	1/8"	10	350
ASA4M-G2	4mm	1/4"	10	300
ASA5M-G1	5mm	1/8"	10	
ASA5M-G2	5mm	1/4"	10	
ASA6M-G1	6mm	1/8"	10	300
ASA6M-G2	6mm	1/4"	10	300
ASA8M-G1	8mm	1/8"	10	400
ASA8M-G2	8mm	1/4"	10	300
ASA8M-G3	8mm	3/8"	10	250
ASA10M-G2	10mm	1/4"	10	300
ASA10M-G3	10mm	3/8"	10	250
ASA10M-G4	10mm	1/2"	5	130
ASA12M-G3	12mm	3/8"	10	200
ASA12M-G4	12mm	1/2"	5	130
ASA15M-G3	15mm	3/8"	5	150
ASA15M-G4	15mm	1/2"	5	100
ASA22M-G4	22mm	1/2"	20	100

Stem Adapter BSPT



Part Number	Stem OD	Thread BSPT	Bag Qty	Box Qty
ASA4M-R1	4mm	1/8"	10	550
ASA4M-R2	4mm	1/4"	10	400
ASA5M-R1	5mm	1/8"	10	
ASA5M-R2	5mm	1/4"	10	
ASA6M-R1	6mm	1/8"	10	450
ASA6M-R2	6mm	1/4"	10	350
ASA8M-R1	8mm	1/8"	10	550
ASA8M-R2	8mm	1/4"	10	400
ASA8M-R3	8mm	3/8"	10	300
ASA10M-R2	10mm	1/4"	10	350
ASA10M-R3	10mm	3/8"	10	250
ASA10M-R4	10mm	1/2"	5	150
ASA12M-R3	12mm	3/8"	10	250
ASA12M-R4	12mm	1/2"	5	125

Three Way Divider



Part Number	Tube OD	Tube OD	Bag Qty	Box Qty
ATHWD106M	10mm	6mm	10	
ATHWD1210M	12mm	10mm	10	

Tee Union



Part Number	Tube OD	Tube OD	Bag Qty	Box Qty
ATU444M	4mm	4mm	10	
ATU555M	5mm	5mm	10	
ATU666M	6mm	6mm	10	
ATU888M	8mm	8mm	10	
ATU10610M	10mm	6mm	10	
ATU101010M	10mm	10mm	10	
ATU121210M	12mm	10mm	5	80
ATU121012M	12mm	10mm	10	
ATU121212M	12mm	12mm	5	80
ATU151515M	15mm	15mm	5	45
ATU222222M	22mm	22mm	5	20
ATU221222M	22mm	22mm	5	30

Stackable Tee



Part Number	Tube OD	Stem OD	Bag Qty	Box Qty
ATRU444M	4mm	4mm	10	400
ATRU666M	6mm	6mm	10	300
ATRU888M	8mm	8mm	10	220

U Bend

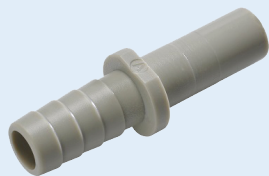


Part Number	Tube OD	Tube OD	Bag Qty	Box Qty
AUB66M	6mm	6mm	10	
AUB88M	8mm	8mm	10	
AUB1010M	10mm	10mm	10	
AUB1212M	12mm	12mm	10	

NeoFit Fittings Metric Acetal

Add W to end of part number for white, -W for natural white, -E for Black, and -G for gray. Gray pictured below. Example: AMC4M-N1-W

Stem Barb Connector



Part Number	Stem OD	Barb ID	Bag Qty	Box Qty
ATBC64M	6mm	4mm	10	800
ATBC66M	6mm	6mm	10	700
ATBC88M	8mm	6mm	10	
ATBC106M	10mm	6mm	10	500
ATBC108M	10mm	8mm	10	450
ATBC1010M	10mm	10mm	10	450
ATBC1210M	12mm	10mm	10	300

Two Way Divider Divider



Part Number	Tube OD	Tube OD	Bag Qty	Box Qty
ATWD44M	4mm	4mm	10	
ATWD66M	6mm	6mm	10	
ATWD88M	8mm	8mm	10	200
ATWD108M	10mm	8mm	10	
ATWD1010M	10mm	10mm	10	
ATWD1012M	10mm	12mm	10	
ATWD1212M	12mm	12mm	10	

Tube End Stop



Part Number	Tube OD	Bag Qty	Box Qty
ATES6M	6mm	10	400
ATES8M	8mm	10	400
ATES10M	10mm	10	300
ATES12M	12mm	10	250

Union Connector



Part Number	Tube OD	Tube OD	Bag Qty	Box Qty
AUC44M	4mm	4mm	10	
AUC55M	5mm	5mm	10	
AUC64M	6mm	6mm	10	350
AUC65M	6mm	6mm	10	400
AUC66M	6mm	6mm	10	350
AUC84M	8mm	4mm	10	250
AUC85M	8mm	5mm	10	
AUC86M	8mm	6mm	10	300
AUC88M	8mm	8mm	10	250
AUC104M	10mm	4mm	10	
AUC105M	10mm	5mm	10	
AUC106M	10mm	6mm	10	250
AUC108M	10mm	8mm	10	250
AUC1010M	10mm	10mm	10	200
AUC128M	12mm	8mm	10	
AUC1210M	12mm	10mm	5	100
AUC1212M	12mm	12mm	5	100
AUC1515M	15mm	15mm	5	80
AUC2222M	22mm	22mm	20	40

Plug



Part Number	Tube OD	Bag Qty	Box Qty
APL4M	4mm	10	800
APL5M	5mm	10	
APL6M	6mm	10	600
APL8M	8mm	10	500
APL10M	10mm	10	350
APL12M	12mm	10	300
APL15M	15mm	10	200

Stem Barb Elbow Connector



Part Number	Stem OD	Barb ID	Bag Qty	Box Qty
ATEB106M	10mm	6mm	10	400
ATEB108M	10mm	8mm	10	400

Add W to end of part number for white, -W for natural white, -E for Black, and -G for gray. Gray pictured below. Example: AMC4M-N1-W

neoFIT

Metric Acetal Swivel



The neoFit Acetal Fittings are manufactured with gray, black, or white acetal copolymer material meeting the requirements of FDA and NSF Standards 51 and 61. These fittings are recommended for use with water and food/beverage applications. Swivel fittings allow the tube connection to be oriented in any direction while allowing the threaded end to be tightened to proper torque allowance. Swivel fittings are packaged as two separate pieces and require the user to assemble.

Max Torque Ratings					
Thread Size	1/8"	1/4"	3/8"	1/2"	3/4"
Max Torque	1 ft/lb (1.5 Nm)	1 ft/lb (1.5 Nm)	2 ft/lb (3 Nm)	2 ft/lb (3 Nm)	3 ft/lb (4 Nm)

Pressure Ratings			
	1/4" (6mm)	3/8" (10mm)	1/2" (22mm)
33°F (0.6°C)	290 psi (20 bar)	232 psi (16 bar)	203 psi (14 bar)
68°F (20°C)	290 psi (20 bar)	232 psi (16 bar)	203 psi (14 bar)
150°F (65.6°C)	232 psi (16 bar)	203 psi (14 bar)	116 psi (8 bar)

Temperatures and Pressures indicated refers to NSF standard limits. Please contact our technical department for higher temperature and /or pressure application needs.

Male Elbow Swivel
BSPT



Part Number	Tube OD	Thread BSPT	Bag Qty	Box Qty
AMES4M-R1	4mm	1/8"	10	
AMES4M-R2	4mm	1/4"	10	
AMES8M-R1	8mm	1/8"	10	
AMES8M-R2	8mm	1/4"	10	
AMES8M-R3	8mm	3/8"	10	

Male Elbow Swivel
BSP(P)



Part Number	Tube OD	Thread BSP(P)	Bag Qty	Box Qty
AMES4M-G1	4mm	1/8"	10	
AMES4M-G2	4mm	1/4"	10	
AMES8M-G1	8mm	1/8"	10	
AMES8M-G2	8mm	1/4"	10	
AMES8M-G3	8mm	3/8"	10	

Male Tee Swivel
BSP(P)



Part Number	Tube OD	Thread BSP(P)	Bag Qty	Box Qty
AMTS4M-G1	4mm	1/8"	10	
AMTS4M-G2	4mm	1/4"	10	
AMTS8M-G1	8mm	1/8"	10	
AMTS8M-G2	8mm	1/4"	10	
AMTS8M-G3	8mm	3/8"	10	

Male Tee Swivel
BSPT



Part Number	Tube OD	Thread BSPT	Bag Qty	Box Qty
AMTS4M-R1	4mm	1/8"	10	
AMTS4M-R2	4mm	1/4"	10	
AMTS8M-R1	8mm	1/8"	10	
AMTS8M-R2	8mm	1/4"	10	
AMTS8M-R3	12mm	3/8"	10	

Add W to end of part number for white, -W for natural white, -E for Black, and -G for gray. Example: AMC4M-N1-W

neoFIT

Acetal Valves



The neoFit Acetal Valves are manufactured with gray, black, or white acetal copolymer material meeting the requirements of FDA and NSF Standards 51 and 61. These fittings are recommended for use with water and food/beverage applications.

Temperature	Pressure
33°F (0.6°C)	150 psi
68°F (20°C)	150 psi
150°F (65.6°C)	100 psi

Temperatures and Pressures indicated refers to NSF standard limits, Please contact our technical department for higher temperature and /or pressure application needs.

Max Torque Ratings					
Thread Size	1/8"	1/4"	3/8"	1/2"	3/4"
Max Torque	1 ft/lb (1.5 Nm)	1 ft/lb (1.5 Nm)	2 ft/lb (3 Nm)	2 ft/lb (3 Nm)	3 ft/lb (4 Nm)

Flow Control Union Connector



Part Number	Tube OD	Bag Qty	Box Qty
ACVU44	1/4"	10	20
ACVU66	3/8"	5	100
ACVU6M	6mm	10	
ACVU10M	10mm	10	

Flow Control Elbow Union



Part Number	Tube OD	Bag Qty	Box Qty
ACVE44	1/4"	10	200
ACVE66	3/8"	5	100
ACVE66M	6mm	10	
ACVE1010M	10mm	10	

Flow Control Bulkhead



Part Number	Tube OD	Bag Qty	Box Qty
ABCVU44	1/4"	10	
ABCVU66	3/8"	5	
ABCVU66M	6mm	10	
ABCVU1010M	10mm	10	

Flow Control Elbow Bulkhead



Part Number	Tube OD	Bag Qty	Box Qty
ABCVE44	1/4"	10	
ABCVE66	3/8"	5	
ABCVE66M	6mm	10	
ABCVE1010M	10mm	10	

Hand Valve Female Adapter BSPT



Part Number	Tube OD	Thread BSPT	Bag Qty	Box Qty
AHVFE6M-R2	6mm	1/4"	10	
AHVFE10M-R3	10mm	3/8"	10	
AHVFE10M-R4	10mm	1/2"	10	
AHVFE12M-R3	12mm	3/8"	10	
AHVFE12M-R4	12mm	1/2"	10	

Hand Valve Female Adapter NPTF



Part Number	Tube OD	Thread NPTF	Bag Qty	Box Qty
AHVFE4-N2	1/4"	1/4"	10	
AHVFE6-N3	3/8"	3/8"	10	
AHVFE6-N4	3/8"	1/2"	10	
AHVFE8-N3	1/2"	3/8"	10	
AHVFE8-N4	1/2"	1/2"	10	

NeoFit Fittings Acetal Valves

Add W to end of part number for white, -W for natural white, -E for Black, and -G for gray. Example: AMC4M-N1-W

Hand Valve Female Straight Connector
NPTF



Part Number	Tube OD	Thread NPTF	Bag Qty	Box Qty
AHVFU6-N4	10mm	1/2"	10	

Hand Valve Female Straight Connector
BSPT



Part Number	Tube OD	Thread BSPT	Bag Qty	Box Qty
AHVFU10M-R4	10mm	1/2"	10	

Hand Valve Male Connector
NPTF



Part Number	Tube OD	Thread NPTF	Bag Qty	Box Qty
AHVMC4-N2	1/4"	1/4"	10	
AHVMC6-N3	3/8"	3/8"	10	
AHVMC8-N4	1/2"	1/2"	10	

Hand Valve Male Connector
BPST



Part Number	Tube OD	Thread BPST	Bag Qty	Box Qty
AHVMC6M-R2	6mm	1/4"	10	
AHVMC10M-R3	10mm	3/8"	10	
AHVMC12M-R4	12mm	1/2"	10	

Flow Control Male Elbow
NPTF



Part Number	Tube OD	Thread NPTF	Bag Qty	Box Qty
ACVMC4-N2	1/4"	1/4"	10	
ACVMC6-N3	3/8"	3/8"	10	
ACVMC6M-N2	6mm	1/4"	10	
ACVMC10M-N3	10mm	3/8"	10	

Flow Control Female Elbow
NPTF



Part Number	Tube OD	Thread NPTF	Bag Qty	Box Qty
ACVFA4-N2	1/4"	1/4"	10	
ACVFA6-N3	3/8"	3/8"	10	
ACVFA6M-N2	6mm	1/4"	10	
ACVFA10M-N3	10mm	3/8"	10	

Angle Stop Adapter
With 1/2" NPS adapters



Part Number	Tube OD	Thread Comp.	Bag Qty	Box Qty
ASBVA-0408	1/4"	3/8"	10	
ASBVA-0408	3/8"	3/8"	10	

Check Valve



Part Number	Tube OD	Tube OD	Bag Qty	Box Qty
ACHV44	1/4"	1/4"	10	250
ACHV45	1/4"	5/16"	10	
ACHV88M	5/16"	5/16"	10	
ACHV66	3/8"	3/8"	5	125
ACHV88	1/2"	1/2"	10	
ACHV66M	6mm	6mm	10	300
ACHV88M	8mm	8mm	10	200
ACHV1010M	10mm	10mm	5	125
ACHV1212M	12mm	12mm	5	90

Hand Valve Union Connector



Part Number	Tube OD	Tube OD	Bag Qty	Box Qty
AHVU44	1/4"	1/4"	5	125
AHVU66	3/8"	3/8"	5	70
AHVU88	1/2"	1/2"	5	60
AHVU66M	6mm	6mm	5	125
AHVU88M	8mm	8mm	5	100
AHVU1010M	10mm	10mm	5	75
AHVU1212M	12mm	12mm	5	70

neoFIT Inch Polypropylene White



The neoFit Polypropylene Fittings are manufactured white polypropylene material with EPDM O-rings meeting the requirements of FDA and NSF Standards 51 and 61. These fittings are recommended for use with water and food/beverage applications.

Temperature	Pressure
33°F (0.6°C)	150 psi
68°F (20°C)	150 psi
150°F (65.6°C)	60 psi

Temperatures and Pressures indicated refers to NSF standard limits, Please contact our technical department for higher temperature and /or pressure application needs.

Max Torque Ratings					
Thread Size	1/8"	1/4"	3/8"	1/2"	3/4"
Max Torque	1 ft/lb (1.5 Nm)	1 ft/lb (1.5 Nm)	2 ft/lb (3 Nm)	2 ft/lb (3 Nm)	3 ft/lb (4 Nm)



Part Number	Tube OD	Thread NPTF	Bag Qty	Box Qty
PMC4-N1-W	1/4"	1/8"	10	
PMC4-N2-W	1/4"	1/4"	10	
PMC6-N2-W	3/8"	1/4"	10	
PMC6-N3-W	3/8"	3/8"	10	



Part Number	Tube OD	Thread NPTF	Bag Qty	Box Qty
PME4-N1-W	1/4"	1/8"	10	
PME4-N2-W	1/4"	1/4"	10	
PME4-N3-W	1/4"	3/8"	10	
PME6-N2-W	3/8"	1/4"	10	
PME6-N3-W	3/8"	3/8"	10	



Part Number	Tube OD	Tube OD	Bag Qty	Box Qty
PTU444-W	1/4"	1/4"	10	
PTU666-W	3/8"	3/8"	10	
PTU888-W	1/2"	1/2"	10	



Part Number	Tube OD	Stem OD	Bag Qty	Box Qty
PTRU444-W	1/4"	1/4"	10	
PTRU666-W	3/8"	3/8"	10	
PTRU888-W	1/2"	1/2"	10	



Part Number	Tube OD	Tube OD	Bag Qty	Box Qty
PEU44-W	1/4"	1/4"	10	
PEU66-W	3/8"	3/8"	10	
PEU88-W	1/2"	1/2"	10	



Part Number	Tube OD	Tube OD	Bag Qty	Box Qty
PUC44-W	1/4"	1/4"	10	
PUC88M-W	5/16"	5/16"	10	
PUC66-W	3/8"	3/8"	10	
PUC88-W	1/2"	1/2"	10	

NeoFit Fittings

Inch Polypropylene White

Stem Adapter
NPTF



Part Number	Stem OD	Thread NPTF	Bag Qty
PSA4-N1-W	1/4"	1/8"	10
PSA4-N2-W	1/4"	1/4"	10
PSA8M-N2-W	5/16"	1/4"	10
PSA8M-N3-W	5/16"	3/8"	10
PSA6-N2-W	3/8"	1/4"	10
PSA6-N3-W	3/8"	3/8"	10
PSA8-N3-W	1/2"	3/8"	10
PSA8-N4-W	1/2"	1/2"	10

Tube Elbow Union



Part Number	Stem OD	Thread NPTF	Bag Qty	Box Qty
PTEU44-W	1/4"	1/4"	10	
PTEU88M-W	5/16"	5/16"	10	
PTEU66-W	3/8"	3/8"	10	
PTEU88-W	1/2"	1/2"	10	

Reducer



Part Number	Tube OD	Stem OD	Bag Qty	Box Qty
PRD46-W	1/4"	3/8"	10	
PRD68-W	3/8"	1/2"	10	

neofit

Polypropylene White Valves



The neoFit Polypropylene Valves are manufactured with white polypropylene material meeting the requirements of FDA and NSF Standards 51 and 61. These valves are recommended for use with water and food/beverage applications.

Temperature	Pressure
33°F (0.6°C)	150 psi
68°F (20°C)	150 psi
150°F (65.6°C)	60 psi

Temperatures and Pressures indicated refers to NSF standard limits. Please contact our technical department for higher temperature and /or pressure application needs.

Max Torque Ratings					
Thread Size	1/8"	1/4"	3/8"	1/2"	3/4"
Max Torque	1 ft/lb (1.5 Nm)	1 ft/lb (1.5 Nm)	2 ft/lb (3 Nm)	2 ft/lb (3 Nm)	3 ft/lb (4 Nm)



Part Number	Tube OD	Thread NPTF	Bag Qty	Box Qty
PHVMC4-N2-W	1/4"	1/4"	10	
PHVMC6-N3-W	3/8"	3/8"	10	
PHVMC8-N4-W	1/2"	1/2"	10	



Part Number	Tube OD	Thread BSPT	Bag Qty	Box Qty
PHVMC6M-R2-W	6mm	1/4"	10	
PHVMC10M-R3-W	10mm	3/8"	10	
PHVMC12M-R4-W	12mm	1/2"	10	



Part Number	Tube OD	Thread NPTF	Bag Qty	Box Qty
PHVFE4-N2-W	1/4"	1/4"	10	
PHVFE6-N3-W	3/8"	3/8"	10	
PHVFE6-N4-W	3/8"	1/2"	10	
PHVFE8-N3-W	1/2"	3/8"	10	
PHVFE8-N4-W	1/2"	1/2"	10	



Part Number	Tube OD	Thread BSPT	Bag Qty	Box Qty
PHVFE6M-R2-W	6mm	1/4"	10	
PHVFE10M-R3-W	10mm	3/8"	10	
PHVFE10M-R4-W	10mm	1/2"	10	
PHVFE12M-R3-W	12mm	3/8"	10	
PHVFE12M-R4-W	12mm	1/2"	10	



Part Number	Tube OD	Bag Qty	Box Qty
PHVU44-W	1/4"	10	
PHVU88M-W	5/16"	10	
PHVU66-W	3/8"	10	
PHVU88-W	1/2"	10	
PHVU66M-W	6mm	10	
PHVU88M-W	8mm	10	
PHVU1010M-W	10mm	10	
PHVU1212M-W	12mm	10	

Add W to end of part number for white, -W for natural white, -E for Black, and -G for gray. Gray pictured below. Example: AMC4M-N1-W

neofit

Accessories



The neofit accessories are manufactured to be used with the neofit family of fittings. All materials used in the manufacture of these parts are food grade rated. These fittings are recommended for use with water and food/beverage applications.

Tube Support



Part Number	Tube OD	Tube ID	Bag Qty	Box Qty
ATS44	1/4"	0.17	10	
ATS8M	5/16"	1/4"	10	
ATS66	3/8"	5/16"	10	
ATS88	1/2"	3/8"	10	
ATS6M	6mm	4mm	10	
ATS8M	8mm	6mm	10	
ATS10M	10mm	7mm	10	
ATS12M	12mm	9mm	10	

Double Seal Insert



Part Number	Tube OD	Tube ID	Bag Qty	Box Qty
ADSI6	3/8"	5/16"	10	
ADSI8M	8mm	6mm	10	
ADSI10M	10mm	8mm	10	
ADSI12M	12mm	10mm	10	

Collet Cover



Part Number	Tube OD	Bag Qty
ACC4	1/4"	10
ACC8M	5/16"	10
ACC6	3/8"	10
ACC8	1/2"	10
ACC6M	6mm	10
ACC8M	8mm	10
ACC10M	10mm	10
ACC12M	12mm	10

Locking Clip



Part Number	Tube OD	Bag Qty	Box Qty
ALC4	1/4"	10	
ALC8M	5/16"	10	
ALC6	3/8"	10	
ALC8	1/2"	10	
ALC6M	6mm	10	
ALC8M	8mm	10	
ALC10M	10mm	10	
ALC12M	12mm	10	

Flow Bend Clip



Part Number	Tube OD	Bag Qty	Box Qty
AFBC8M	5/16"	10	
AFBC6	3/8"	10	
AFBC8M	8mm	10	
AFBC10M	10mm	10	

Half Cartridge Brass, EDPM O Ring



Part Number	Tube OD	Bag Qty	Box Qty
HCBE-4M	5/32"	10	
HCBE-4	1/4"	10	
HCBE-8M	5/16"	10	
HCBE-6	3/8"	10	
HCBE-4M	1/2"	10	

NeoFit Fittings Accessories

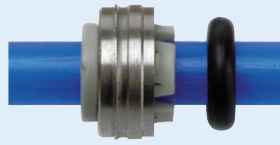
Add W to end of part number for white, -W for natural white, -E for Black, and -G for gray. Gray pictured below. Example: AMC4M-N1-W

Half Cartridge
Brass, EDPM O Ring



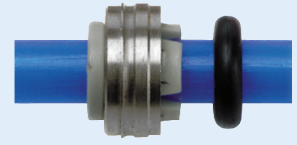
Part Number	Tube OD	Bag Qty	Box Qty
HCBE-4M	4mm	10	
HCBE-6M	6mm	10	
HCBE-8M	8mm	10	
HCBE-10M	10mm	10	
HCBE-12M	12mm	10	

Half Cartridge
SS, NBR O Ring



Part Number	Tube OD	Bag Qty	Box Qty
HCSB-4M	5/32"	10	
HCSB-4	1/4"	10	
HCSB-8M	5/16"	10	
HCSB-6	3/8"	10	
HCSB-8	1/2"	10	

Half Cartridge
SS, NBR O Ring



Part Number	Tube OD	Bag Qty	Box Qty
HCSB-4M	4mm	10	
HCSB-6M	6mm	10	
HCSB-8M	8mm	10	
HCSB-10M	10mm	10	
HCSB-12M	12mm	10	

Half Cartridge
Acetal, EDPM O Ring



Part Number	Tube OD	Bag Qty	Box Qty
HCAE-4M	5/32"	10	
HCAE-4	1/4"	10	
HCAE-8M	5/16"	10	
HCAE-6	3/8"	10	
HCAE-8	1/2"	10	

Half Cartridge
Acetal, EDPM O Ring



Part Number	Tube OD	Bag Qty	Box Qty
HCAE-4M	4mm	10	
HCAE-6M	6mm	10	
HCAE-8M	8mm	10	
HCAE-10M	10mm	10	
HCAE-12M	12mm	10	

Half Cartridge
Acetal, NBR O Ring



Part Number	Tube OD	Bag Qty	Box Qty
HCAB-4M	5/32"	10	
HCAB-4	1/4"	10	
HCAB-8M	5/16"	10	
HCAB-6	3/8"	10	
HCAB-8	1/2"	10	

Half Cartridge
Acetal, NBR O Ring



Part Number	Tube OD	Bag Qty
HCAB-4M	4mm	10
HCAB-6M	6mm	10
HCAE-8M	8mm	10
HCAB-10M	10mm	10
HCAB-12M	12mm	10

Filter Strainer



Part Number	Tube OD	Mesh	Bag Qty	Box Qty
AFS44-G-100	1/4"	100	20	40
AFS44-G-200	1/4"	200	20	40
AFS88M-G-100	5/16"	100	20	40
AFS88M-G-200	5/16"	200	20	40
AFS66-G-100	3/8"	100	20	40
AFS66-G-200	3/8"	200	20	40
AFS88-G-100	1/2"	100	20	40
AFS88-G-200	1/2"	200	20	40

Filter Strainer



Part Number	Tube OD	Mesh	Bag Qty	Box Qty
AFS66M-G-100	6mm	100	20	40
AFS66M-G-200	6mm	200	20	40
AFS88M-G-100	8mm	100	20	40
AFS88M-G-200	8mm	200	20	40
AFS1010M-G-100	10mm	100	20	40
AFS1010M-G-200	10mm	200	20	40
AFS1212M-G-100	12mm	100	20	40
AFS1212M-G-200	12mm	200	20	40

- Although the compatibility is proved as Excellent or Good, it may not suitable in some purposes of applications.
- Be sure to refer in actual using condition

Chemical Name Density (%), Temperature (°C)	FITTING						TUBE				SEAL		
	BRASS	SUS304	SUS316	POM	PBT	PP	URETHANE	NYLON	POLYOLEFIN	FLUORINE	NBR	EPDM	FKM
Caustic soda (10% 20°C)	△	△	○	⊙	△	○	×	○	○	⊙	○	⊙	○
Caustic soda (30% 20°C)	-	-	-	⊙	×	○	×	○	○	⊙	-	-	-
Caustic soda (30% 70°C)	-	-	-	○	×	△	×	×	△	○	-	-	-
Gasoline	○	○	○	⊙	⊙	△	○	⊙	△	⊙	⊙	×	⊙
Air	⊙	⊙	⊙	⊙	⊙	⊙	○	○	○	○	⊙	⊙	⊙
Sodium perborate	×	-	○	○	○	○	-	○	○	⊙	○	⊙	⊙
Sodium peroxide	×	-	○	-	-	○	-	×	○	⊙	○	⊙	⊙
Hydrogen peroxide (5%,20°C)	×	○	○	○	○	⊙	○	⊙	⊙	⊙	-	-	-
Hydrogen peroxide (5%,20°C)	×	○	○	△	○	⊙	△	△	⊙	⊙	-	-	-
Hydrogen peroxide 30%,20°C)	×	○	○	×	○	○	×	×	○	⊙	-	-	-
Perchloric acid	×	×	×	×	○	○	×	×	○	○	-	○	⊙
Grease	○	⊙	⊙	⊙	⊙	△	○	⊙	△	⊙	⊙	×	⊙
Sodium silicate	△	-	○	⊙	○	⊙	⊙	⊙	⊙	⊙	⊙	⊙	⊙
Glycerin	○	⊙	⊙	⊙	⊙	⊙	○	⊙	⊙	⊙	⊙	⊙	⊙
Naphtha	△	○	○	⊙	○	△	△	○	△	⊙	△	×	⊙
Naphthaline	△	-	△	⊙	○	○	△	⊙	△	⊙	×	×	⊙
Nitropropane	-	-	-	○	-	○	-	-	○	○	-	-	-
Kerosene	⊙	⊙	⊙	⊙	⊙	△	⊙	⊙	△	⊙	⊙	×	⊙
Dichloro benzene	△	-	-	△	△	△	×	△	×	⊙	-	-	-
Linoleic acid	-	-	-	○	-	△	-	△	△	○	○	×	○
Maleic acid	-	△	△	-	-	⊙	△	⊙	⊙	⊙	-	△	⊙
Cottonseed oil	△	○	○	⊙	-	○	⊙	⊙	○	⊙	⊙	⊙	⊙
Methane	○	-	△	⊙	⊙	⊙	⊙	⊙	⊙	⊙	⊙	×	⊙
Methyl alcohol(Methanol)	⊙	△	○	○	○	○	△	○	○	⊙	⊙	⊙	△
Methyl ethyl ketone(MEK)	⊙	△	○	○	○	○	×	○	○	○	×	⊙	×
Methyl isobutyl ketone(MIBK)	△	-	△	○	○	○	×	○	○	⊙	×	△	×
Monoethanolamine	-	-	△	○	-	○	-	○	△	○	×	○	×
Monochlorobenzene	-	-	-	○	-	×	×	×	×	○	×	×	⊙
Chloroacetic acid	-	-	-	△	△	×	×	×	×	○	-	-	-
Hydrofluoric acid Anhydride	×	-	×	×	-	×	×	×	×	○	-	○	-
Acetic Anhydride	×	○	○	×	-	△	×	×	△	○	△	○	×
Water (24°C)	○	○	○	⊙	○	⊙	⊙	⊙	⊙	⊙	⊙	⊙	⊙
Water (100°C)	×	○	○	△	×	△	△	△	△	⊙	-	-	-
Sea Water	△	○	○	⊙	○	⊙	⊙	⊙	⊙	⊙	-	-	-
Bunker oil	△	-	○	-	-	○	-	○	○	-	⊙	-	⊙
Benzene(Benzol)	×	△	△	○	○	△	×	○	×	⊙	×	×	⊙
Butane	⊙	⊙	⊙	⊙	⊙	⊙	-	○	△	⊙	⊙	×	⊙
Fluorine	×	×	△	×	-	×	×	-	×	×	-	△	○
Borax	×	-	○	-	-	⊙	⊙	⊙	⊙	⊙	○	⊙	⊙
Boric acid	○	○	○	○	○	⊙	⊙	⊙	⊙	⊙	⊙	⊙	⊙
Amyl borate	-	-	-	○	-	△	-	-	△	○	⊙	×	⊙
Bromine	×	-	×	×	×	△	×	×	×	⊙	-	-	⊙
Arsenic acid	△	○	○	-	-	○	-	△	○	○	-	-	-
Carbon tetrachloride	△	△	△	○	○	△	×	△	×	⊙	△	×	⊙
Oxygen	⊙	⊙	⊙	○	○	○	○	○	○	⊙	○	⊙	⊙
Petroleum	-	-	-	○	○	×	⊙	⊙	×	⊙	⊙	×	⊙

Judgement Standard	⊙ : Excellent ○ : Good △ : Required confirmation × : Incompatible - : No data
---------------------------	---

Chemical Name Density (%), Temperature (°C)	FITTING						TUBE				SEAL		
	BRASS	SUS304	SUS316	POM	PBT	PP	URETHANE	NYLON	POLYOLEFIN	FLUORINE	NBR	EPDM	FKM
Salt Water	×	△	△	⊙	○	○	-	○	○	○	-	-	-
Soda water	-	-	-	⊙	○	○	○	○	○	○	-	-	-
Soda ash Sodium carbonate	○	△	△	⊙	○	⊙	⊙	⊙	⊙	⊙	⊙	⊙	⊙
Pine oil	△	○	⊙	-	○	○	-	×	○	○	○	×	⊙
Oxalic acid	△	△	△	×	○	⊙	△	⊙	⊙	⊙	○	⊙	⊙
Ethyl oxalate	-	-	-	○	○	×	×	○	×	○	×	⊙	⊙
Magnesium hydroxide	△	-	△	⊙	×	○	△	⊙	⊙	⊙	○	⊙	⊙
Barium hydroxide	×	-	⊙	⊙	△	○	-	○	○	⊙	⊙	⊙	⊙
Ammonium hydroxide	×	△	○	⊙	×	⊙	△	○	⊙	⊙	×	⊙	○
Potassium hydroxide	△	△	△	⊙	×	○	△	△	⊙	⊙	○	⊙	○
Calcium hydroxide	△	△	△	⊙	×	○	△	⊙	⊙	⊙	⊙	⊙	⊙
Hydrogen	△	⊙	⊙	⊙	⊙	⊙	⊙	⊙	⊙	⊙	⊙	⊙	⊙
Mercury	×	-	△	-	-	⊙	-	○	○	○	⊙	⊙	⊙
Steam (150)	○	-	○	△	△	×	×	×	×	○	×	⊙	×
Steam (150)	-	-	-	×	×	△	×	×	×	○	×	○	×
Vegetable oil	-	-	-	○	○	○	-	○	○	○	⊙	⊙	⊙
Salt water	△	△	△	⊙	○	⊙	○	⊙	⊙	⊙	-	-	-
Silicone greases	-	-	-	⊙	⊙	△	-	○	△	○	⊙	⊙	⊙
Silicone oil	-	-	-	⊙	⊙	△	-	○	△	○	⊙	⊙	⊙
Glue	△	-	△	-	-	⊙	-	○	○	⊙	-	-	-
Aniline	×	△	△	○	○	△	×	×	×	○	×	○	△
Amyl naphtalene	-	-	-	⊙	⊙	△	-	-	△	○	×	×	⊙
Amyl alcohol	○	△	△	⊙	⊙	○	○	○	○	○	○	⊙	○
Acetone	⊙	△	○	○	○	△	×	○	△	○	×	⊙	×
Acetamide	-	-	-	○	○	△	-	-	△	○	⊙	⊙	○
Acetaldehyde	⊙	○	⊙	○	○	○	○	○	△	○	×	⊙	×
Acetylene	×	○	⊙	○	⊙	⊙	⊙	⊙	⊙	⊙	○	⊙	⊙
Sulfurous acid	×	△	△	×	○	○	×	×	○	⊙	○	○	⊙
Sulfurous acid gas	-	-	○	△	○	○	×	×	△	⊙	○	○	⊙
Sodium sulfite	○	○	⊙	⊙	○	○	-	△	○	⊙	-	-	-
Ammonia	△	⊙	⊙	○	△	○	-	○	○	⊙	⊙	⊙	×
Ammonia gas	×	○	○	○	△	△	×	△	△	○	⊙	⊙	×
Ammonia gas	×	○	○	○	×	×	×	×	×	○	⊙	⊙	×
Liquid Ammonia	○	⊙	⊙	○	△	○	-	○	○	○	-	-	-
Chlorine Liquide	-	-	-	×	○	×	×	×	×	○	-	-	-
Liquefied petroleum gas(LPG)	⊙	⊙	⊙	⊙	⊙	△	-	○	△	○	⊙	×	⊙
Ethanolamine	-	-	-	⊙	△	△	-	△	△	○	○	○	×
Ethylene glyco	△	△	△	⊙	○	⊙	⊙	⊙	⊙	⊙	⊙	⊙	⊙
Ethyl cellulose	-	-	△	⊙	⊙	⊙	-	-	○	⊙	-	○	×
Ethyl alcohol(Ethanol)	⊙	○	⊙	⊙	⊙	○	△	○	○	⊙	⊙	⊙	⊙
Lye solution	-	-	-	⊙	○	○	-	○	○	○	○	⊙	○
Hydrochloric acid(10%, 20°C)	×	×	×	×	○	⊙	△	○	⊙	⊙	-	-	-
Hydrochloric acid(20%, 20°C)	×	×	×	×	△	○	×	×	○	⊙	-	-	-
Hydrochloric acid(20%, 80°C)	×	×	×	×	×	×	×	×	×	○	×	△	⊙
Hydrochloric acid(38%, 20°C)	×	×	×	×	△	○	×	×	○	⊙	○	⊙	⊙
Magnesium chloride	△	△	○	⊙	○	⊙	⊙	⊙	⊙	⊙	⊙	⊙	⊙

Judgement Standard	⊙ : Excellent ○ : Good △ : Required confirmation × : Incompatible – : No data
---------------------------	---

Chemical Name Density (%), Temperature (°C)	FITTING						TUBE				SEAL		
	BRASS	SUS304	SUS316	POM	PBT	PP	URETHANE	NYLON	POLYOLEFIN	FLUORINE	NBR	EPDM	FKM
Methyle chloride	○	○	⊙	⊙	–	×	×	△	×	○	×	△	⊙
Barium chloride	×	–	○	–	○	⊙	⊙	⊙	⊙	⊙	⊙	⊙	⊙
Zinc chloride	×	△	○	×	○	⊙	⊙	○	⊙	⊙	⊙	⊙	⊙
Acetyl chloride	–	–	△	×	–	×	×	×	×	–	–	–	⊙
Aluminium chloride	×	×	×	–	○	⊙	–	△	○	⊙	⊙	⊙	⊙
Ammonium chloride	×	△	△	⊙	○	⊙	○	⊙	⊙	⊙	⊙	⊙	⊙
Ethyle chloride	○	⊙	⊙	⊙	–	×	×	⊙	×	–	⊙	⊙	⊙
Sulfur chloride	×	–	△	–	–	△	–	–	△	⊙	△	×	⊙
Kalium chloride	△	△	○	⊙	○	⊙	○	⊙	⊙	⊙	⊙	⊙	⊙
Calcium chloride	○	△	△	⊙	○	⊙	○	⊙	⊙	⊙	⊙	⊙	⊙
Ozone	○	○	○	△	⊙	△	△	○	△	⊙	○	⊙	⊙
Oleic acid	△	△	△	△	⊙	○	△	○	△	⊙	△	○	○
Olive oil	△	⊙	⊙	○	⊙	○	○	○	○	⊙	⊙	○	⊙
Uric acid	–	–	–	○	○	–	×	○	–	○	–	–	–
Aqua acid	–	–	–	×	–	△	×	×	×	○	–	△	○
Lactic acid	×	△	△	○	○	⊙	–	○	○	⊙	⊙	⊙	⊙
Sulfur	×	○	○	⊙	–	⊙	△	○	⊙	⊙	×	⊙	⊙
Lubricating oil(Petroleum base)	⊙	⊙	⊙	⊙	⊙	×	⊙	⊙	×	⊙	⊙	×	⊙
Lubricating oil(Easter base)	⊙	⊙	⊙	⊙	○	×	×	○	×	○	–	–	–
Isooctane	⊙	○	○	⊙	⊙	×	△	○	×	○	⊙	×	⊙
Isopropyl alcohol	○	○	○	⊙	○	⊙	–	△	⊙	⊙	○	⊙	⊙
Isopropyl ether	⊙	○	○	⊙	○	○	–	△	△	○	○	×	×
Carbon disulfide	○	○	○	○	–	×	×	○	×	○	△	×	⊙
Phenyle disulfide	–	–	–	–	–	–	△	○	–	○	–	–	–
Carbon monoxide	⊙	⊙	⊙	⊙	○	⊙	⊙	⊙	⊙	⊙	⊙	⊙	⊙
Gelatin	⊙	⊙	⊙	⊙	○	○	○	○	○	○	⊙	⊙	⊙
Heavy water	–	–	–	⊙	○	⊙	⊙	⊙	⊙	⊙	–	–	–
Soap souldions	⊙	⊙	⊙	⊙	○	○	○	⊙	△	⊙	⊙	⊙	⊙
Sodium nitrate	○	○	⊙	○	○	⊙	○	⊙	⊙	⊙	○	⊙	–
Aluminium nitric	–	–	△	○	○	○	△	○	○	⊙	⊙	⊙	–
Ammonium nitric	×	○	○	○	○	⊙	○	⊙	⊙	⊙	⊙	⊙	–
Kalium nitric	△	△	△	○	○	⊙	⊙	○	⊙	⊙	⊙	⊙	⊙
Calcium nitri	–	–	–	○	○	⊙	–	○	○	⊙	⊙	⊙	⊙
Nitrogen	○	⊙	⊙	⊙	○	⊙	○	○	○	⊙	⊙	⊙	⊙
Natural gas	⊙	⊙	⊙	⊙	⊙	○	–	○	○	○	⊙	×	⊙
Acetic acid(10%, 20°C)	×	○	⊙	△	○	⊙	×	△	⊙	⊙	○	⊙	○
Acetic acid(50%, 20°C)	×	○	○	×	○	○	×	×	○	○	–	–	–
Acetic acid(50%, 70°C)	×	○	○	×	△	×	×	×	×	○	–	–	–
Acetic acid(100%, 20°C)	×	△	△	×	△	×	×	×	×	○	–	–	–
Lead acetate	–	△	–	–	○	○	–	○	○	○	○	⊙	–
Nickel acetate	–	–	△	–	○	⊙	–	○	○	⊙	○	⊙	×
Zinc acetate	–	–	–	○	○	○	–	○	○	○	○	⊙	×
Aluminium acetate	–	–	–	○	○	○	–	○	○	○	○	⊙	–
Calcium acetate	△	–	△	○	○	⊙	○	○	○	⊙	○	⊙	×
Cresol	○	△	⊙	△	○	○	×	×	△	⊙	△	×	⊙
Chlorosulfonic acid	△	×	×	×	○	×	–	×	×	○	×	×	△

Judgement Standard	⊙ : Excellent ○ : Good △ : Required confirmation × : Incompatible - : No data
---------------------------	---

Chemical Name Density (%), Temperature (°C)	FITTING						TUBE				SEAL		
	BRASS	SUS304	SUS316	POM	PBT	PP	URETHANE	NYLON	POLYOLEFIN	FLUORINE	NBR	EPDM	FKM
Chloroacetone	-	-	-	-	-	×	-	-	×	-	×	⊙	×
Chlorotoluene	-	-	-	○	○	×	-	×	×	○	×	×	⊙
Chloroform	○	○	○	△	△	×	×	○	×	⊙	×	×	⊙
Soybean oil	△	○	○	⊙	⊙	○	-	○	○	⊙	⊙	△	⊙
Tannic acid	×	△	△	○	-	⊙	△	⊙	⊙	⊙	⊙	⊙	⊙
Tar	△	⊙	⊙	-	-	○	⊙	⊙	○	⊙	○	×	⊙
Carbonic acid	○	△	△	-	-	○	△	⊙	○	⊙	⊙	⊙	⊙
Carbon dioxide	○	○	○	⊙	⊙	⊙	○	○	○	⊙	-	-	-
Sodium carbonate	○	△	△	⊙	○	⊙	⊙	⊙	⊙	⊙	-	-	-
Ammonium carbonate	-	△	△	⊙	○	○	-	○	○	⊙	×	⊙	-
Toluene	⊙	⊙	⊙	○	△	△	△	○	△	○	×	×	⊙
Triacetin	-	-	-	-	-	○	-	-	○	-	○	⊙	×
Phenol	○	○	○	×	○	○	×	×	○	⊙	-	○	⊙
Glucose	⊙	⊙	⊙	⊙	⊙	⊙	○	⊙	⊙	⊙	⊙	⊙	⊙
Freon11	⊙	⊙	⊙	⊙	⊙	-	-	○	-	○	⊙	×	⊙
Freon12	⊙	⊙	⊙	⊙	⊙	-	-	○	-	○	⊙	○	○
Freon21	⊙	⊙	⊙	⊙	⊙	-	-	○	-	○	×	×	×
Freon22	⊙	⊙	⊙	⊙	⊙	-	-	○	-	○	×	⊙	×
Freon113	⊙	⊙	⊙	⊙	⊙	-	-	○	-	○	⊙	×	○
Freon114	⊙	⊙	⊙	⊙	⊙	-	-	○	-	○	⊙	⊙	○
Propane	⊙	⊙	⊙	⊙	⊙	⊙	○	⊙	⊙	⊙	⊙	×	⊙
Propylene	⊙	⊙	⊙	⊙	⊙	-	-	○	-	○	×	×	⊙
Castor oil	○	○	○	○	○	⊙	△	⊙	⊙	⊙	⊙	○	⊙
Hexane	○	○	○	⊙	⊙	△	○	⊙	×	⊙	⊙	×	⊙
Sulfuric acid (10%, 20°C)	×	×	×	×	○	○	×	○	○	⊙	×	○	⊙
Sulfuric acid (10%, 70°C)	×	×	×	×	×	△	×	×	△	⊙	-	-	-
Sulfuric acid (30%, 20°C)	×	×	×	×	△	○	×	×	○	⊙	-	-	-
Sulfuric acid (30%, 70°C)	×	×	×	×	×	△	×	×	△	○	-	-	-
Sulfuric acid (98%, 20°C)	×	×	×	×	×	×	×	×	×	○	-	-	-
Sulfuric acid (98%, 70°C)	×	×	×	×	×	×	×	×	×	○	-	-	-
Sodium sulfate	○	△	○	⊙	○	⊙	⊙	⊙	⊙	⊙	⊙	⊙	⊙
Nickel sulfate	-	△	○	-	○	○	-	○	○	⊙	⊙	⊙	⊙
Copper sulfate	○	△	○	⊙	○	⊙	⊙	⊙	⊙	⊙	⊙	⊙	⊙
Magnesium sulfate	○	○	⊙	-	○	⊙	⊙	⊙	⊙	⊙	⊙	⊙	⊙
Metyl sulfate	-	-	-	-	○	×	×	△	×	⊙	-	-	-
Barium sulfate	△	○	○	-	○	○	-	○	○	⊙	⊙	⊙	⊙
Aluminium sulfate	×	○	○	⊙	○	⊙	-	⊙	⊙	⊙	⊙	⊙	⊙
Ammonium sulfate	△	△	△	⊙	○	⊙	⊙	⊙	⊙	⊙	⊙	⊙	-
Lead sulfate	△	-	△	-	○	○	○	○	○	⊙	-	-	-
Sodium sulfide	×	△	△	○	○	○	○	○	○	⊙	○	⊙	⊙
Barium sulfide	-	-	○	○	○	○	-	○	○	⊙	⊙	⊙	⊙
Zinc sulfide	△	○	○	○	○	⊙	△	×	⊙	⊙	-	-	-
Calcium sulfide	-	-	△	○	○	○	-	○	○	⊙	○	⊙	⊙