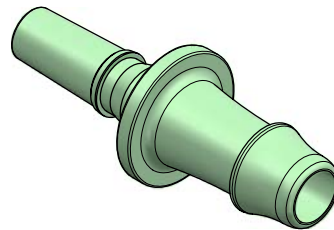
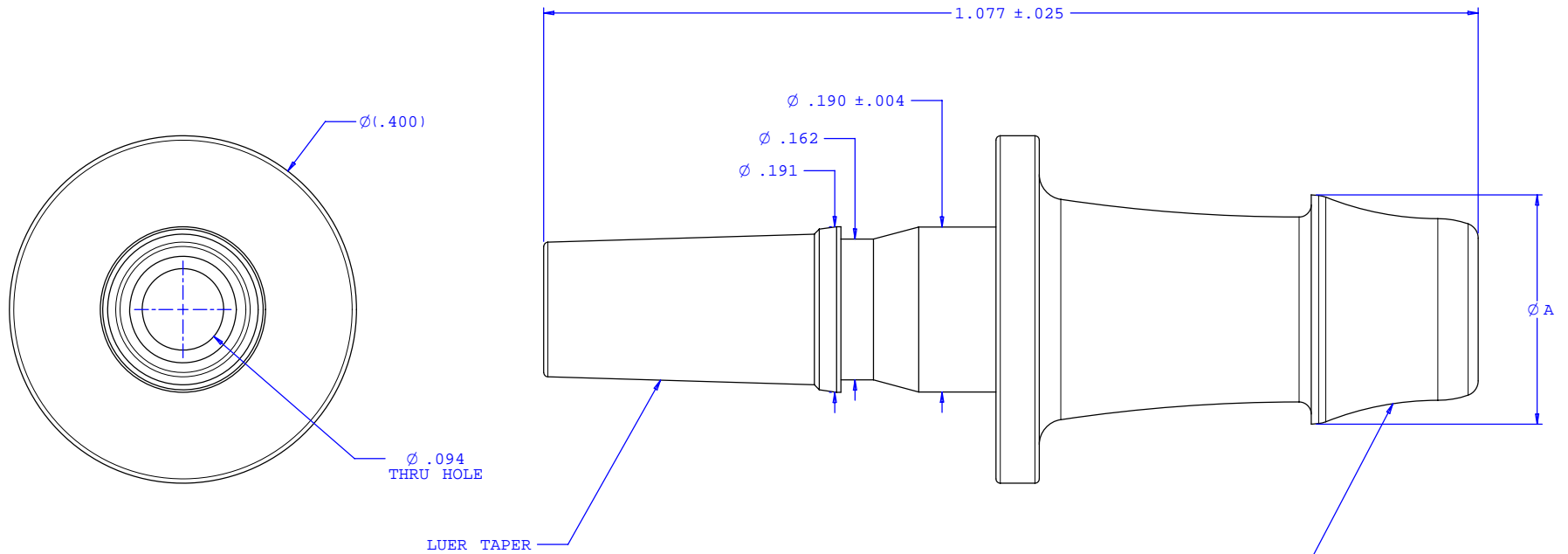


NOTE: FOR MORE DETAILS SEE YOUR V.P.CUSTOMER SERVICE REP.

REVISIONS			
REV.	DESCRIPTION	DATE	APPROVED
A	ECO#0030	02-27-01	
B	CO 024 Drafting Update	Rick C.	12-22-05



INSTRUMENT QUALITY PART. NO PARTING LINE PERMITTED ON THIS CONICAL SURFACE

Dimension	Material Specific Tolerances							
	Acetal	Nylon	PP	ABS	PC	PVC	Polysulfone	J1A
A	.264	.258	.258	.264	.264	.264	.264	.264
B								
C								
D								
E								
F								

UNLESS OTHERWISE SPECIFIED DIMENSIONS ARE IN INCHES TOLERANCES ARE:		VALUE PLASTICS, INC.	
FRACTIONS ±	DECIMALS .XX ±.01 .XXX ±.005 .XXXX ±.001	ANGULAR ±1°	PART NUMBER: MLRL035
DO NOT SCALE DRAWING		DESCRIPTION: Male Luer to 500 Series Barb, 3/16" (4.75 mm ID Tubing (May be used with separate lock ring FSLLR)	
DRAWN BY: Frank Lombardi	DATE: 07-26-05	SIZE: B SCALE: NTS	DRAWING NUMBER: 1007186 REV. B
Engineer/Manager: Rick Cairns		© 2005 VALUE PLASTICS, INC. SHEET: 1 OF 1	

FOR REFERENCE ONLY