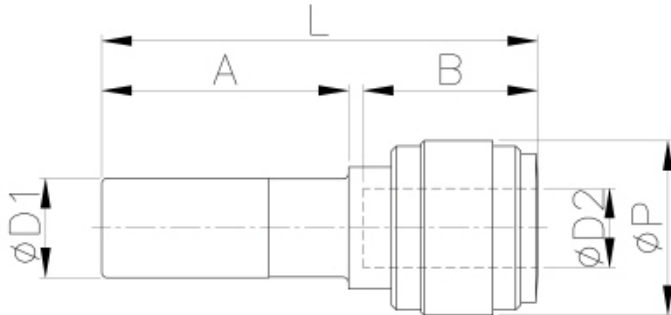


Stem Reducer



Pressure Ratings			
	< 5/16"	3/8"	1/2"
33 °F	290 psi	232 psi	203 psi
68 °F	290 psi	232 psi	203 psi
150 °F	232 psi	203 psi	116 psi

Model	D1	D2	P	L	A	B	Weight (g)
ARD4M4	1/4	4mm (5/32)	0.520	1.445	0.827	0.579	2.4
ARD8M4	8mm (5/16)	1/4	0.610	1.598	0.886	0.665	3.4
ARD88M	8mm (5/16)	8mm (5/16)	0.693	1.634	0.886	0.689	4.5
ARD8M6	8mm (5/16)	3/8	0.787	1.772	1.004	0.795	5.9
ARD63	3/8	3/16	0.543	1.646	0.976	0.591	3.3
ARD46	3/8	1/4	0.693	1.728	0.976	0.665	4.7
ARD68	3/8	1/2	0.929	2.051	0.976	0.988	9
ARD65	3/8	8mm (5/16)	0.693	1.744	0.976	0.689	4.6
ARD8M8	1/2	8mm (5/16)	0.787	2.020	1.161	0.689	7.5
ARD86	1/2	3/8	0.787	2.035	1.161	0.795	7.1
ARD815M	1/2	15mm	1.102	2.429	1.161	11.575	15.2