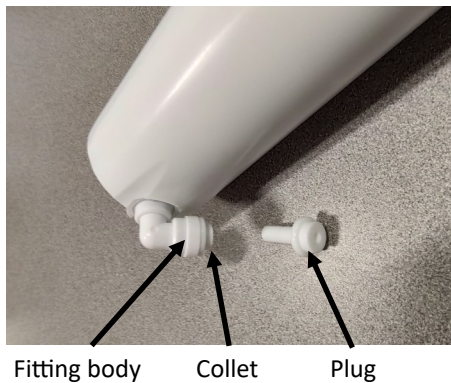
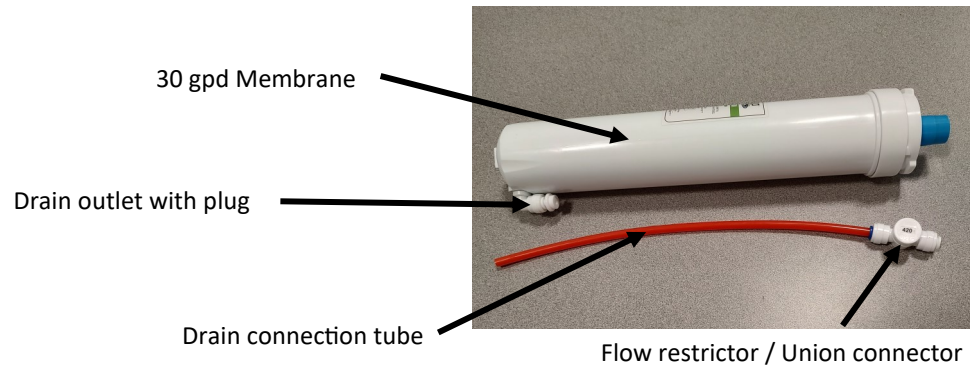


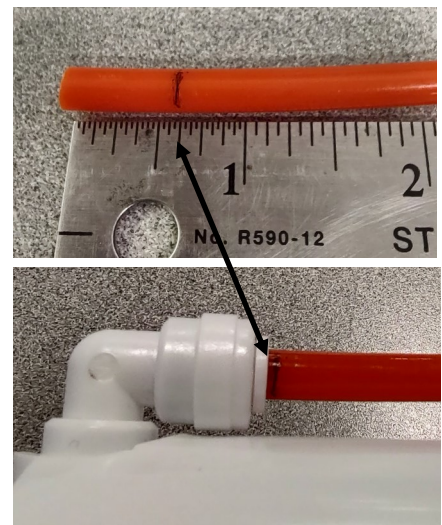
Neo-Pure Compatible SQC membrane - Steps to Prepare for installation

Following these simple instructions will make installing your new Neo-Pure membrane into the SQC reverse osmosis drinking water system easy and trouble free.

1. Remove the membrane and drain connection tubing from the package

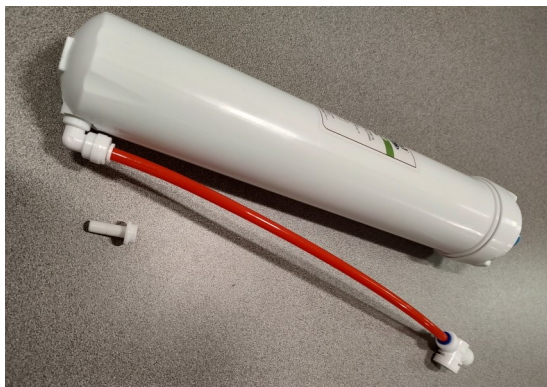


2. Remove the plug from the drain outlet fitting by pressing the collet towards the fitting body while pulling the plug out



3. Measure and make a line on the drain connection tubing end at 5/8"

4. Insert this into the fitting body on the membrane making sure that the line is even with the collet. This ensures that the tubing is in all the way



5. Now you are ready to insert the membrane cartridge into your SQC reverse osmosis system. Once in place, let it make water and fill up the tank and then drain it a couple of times before using the water. This will flush the new membrane and prepare it to work at its best.