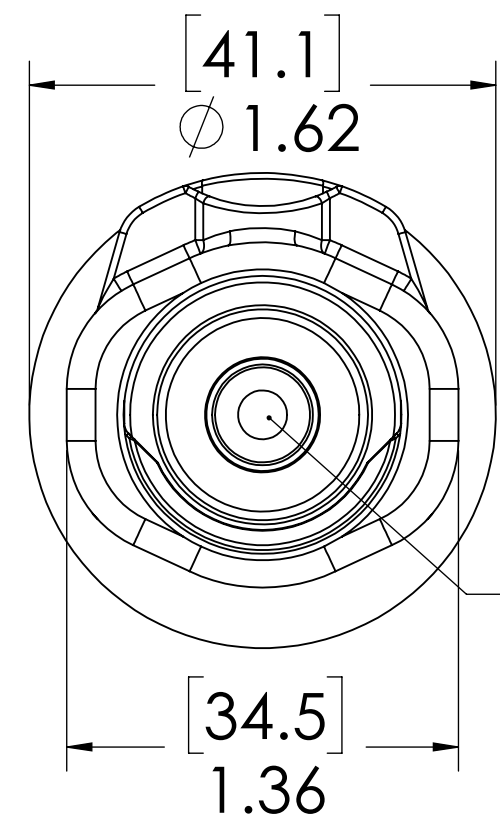
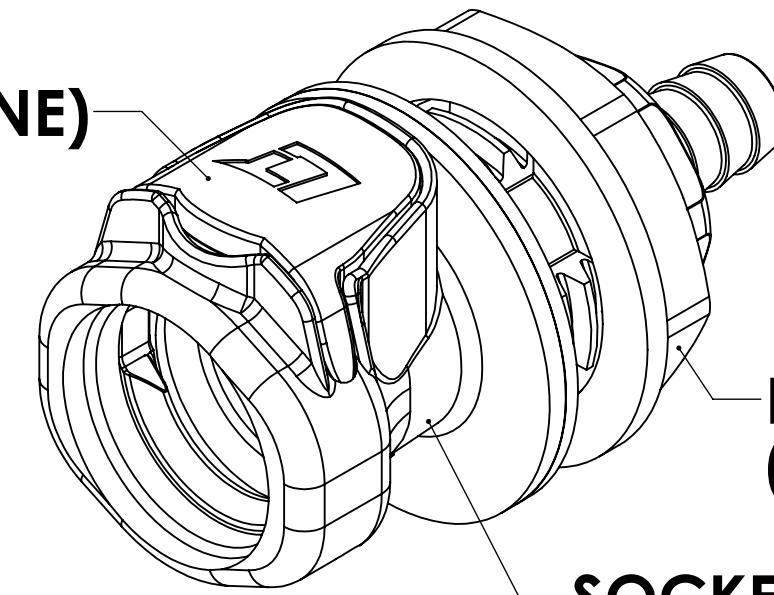


REVISIONS						
SHEET	ZONE	REV.	ECO	DESCRIPTION	DATE	APPROVED
1	A-8	A	ADDED O-RING LUBRICATION NOTE	6/20/2014	HRC
1	D-7	A	UPDATE LATCH SPRING	6/20/2014	HRC
1	E-2	A	ADDED GASKET TO ASSEMBLY	6/20/2014	HRC
1	ALL	A	50093	INITIAL RELEASE	9/10/2014	HRC
1	ALL	B	50253	UPDATE DWG TO CURRENT FORMAT & STANDARDS	10/30/2018	HRC

**LATCH
(POLYPROPYLENE)**

**PANEL NUT
(POLYPROPYLENE)**

**SOCKET
(POLYPROPYLENE)**

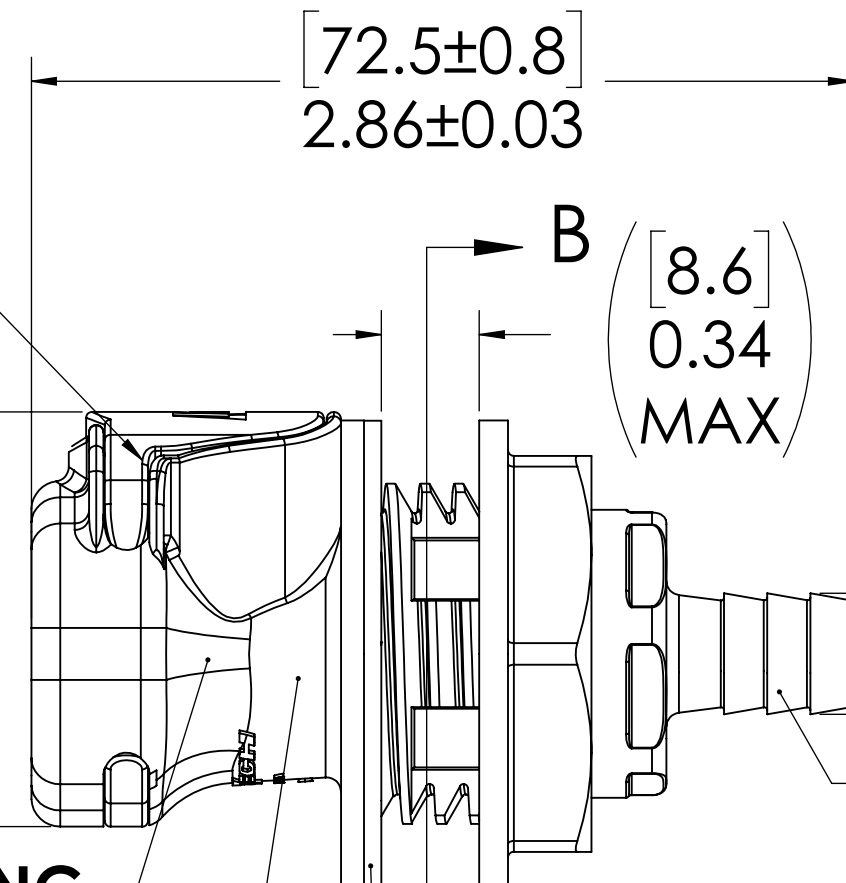


**VALVE
POLYPROPYLENE**

**LATCH SPRING
(STAINLESS STEEL)**

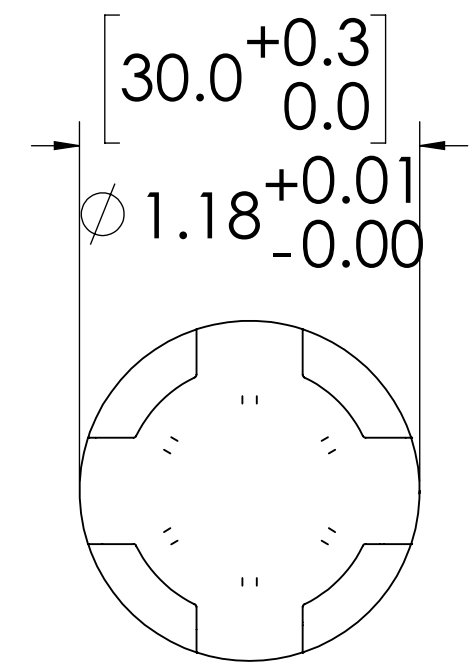
**VALVE O-RING
INTERNAL
(EPDM)**

**VALVE SPRING
INTERNAL
(STAINLESS STEEL)**



**GASKET
EXTERNAL
(EPDM)**

3/8" TUBE ID



**SECTION B-B
(PANEL OPENING)**

NOTES:

1. MATERIAL: POLYPROPYLENE
2. COLOR: GREY
3. O-RING AND GASKET MATERIAL: EPDM
4. O-RINGS LUBRICATED WITH FOOD GRADE SILICONE OIL, 350 CST.

FOR REFERENCE ONLY

<small>UNLESS OTHERWISE SPECIFIED: DIMENSIONS ARE IN INCHES TOLERANCES: FRACTIONAL ± 1/32 ANGULAR: MACH ± 0.5 BEND ± 2 ONE PLACE DECIMAL ± 0.1 TWO PLACE DECIMAL ± 0.01 THREE PLACE DECIMAL ± 0.005 TWO PLACE DECIMAL (mm) [±0.12]</small>	<small>DRAWN</small> LMP 6/22/2018	<small>NAME</small> LMP 6/22/2018		
	<small>CHECKED</small> HRC 6/22/2018	<small>DATE</small> 6/22/2018		<small>PART NO.:</small> 60PPV-SE3-06
	<small>ENG APPR.</small> HRC 10/30/18	<small>DESCRIPTION:</small> LinkTech 60PP Series, Panel Mt. Socket, Valved, 3/8" HB, Polypropylene		
	<small>MFG APPR.</small> BDB 10/30/18	<small>PRODUCTION</small> LS 10/30/18		<small>SIZE</small> C
<small>PROPRIETARY AND CONFIDENTIAL</small> THE INFORMATION CONTAINED IN THIS DRAWING IS THE SOLE PROPERTY OF LINKTECH LLC. ANY REPRODUCTION OR DISCLOSURE IN PART OR AS A WHOLE WITHOUT THE WRITTEN PERMISSION OF LINKTECH LLC IS STRICTLY PROHIBITED.	<small>COMMENTS:</small>	<small>DWG. NO.</small> 60PP600078	<small>REV</small> B	
<small>SCALE: NTS</small>		<small>WEIGHT:</small>	<small>SHEET 1 OF 1</small>	