

# Installation, Operation and Maintenance Manual

## Leak Protector & Shutoff Valve

Detects leaks and shuts off automatically when leaks are detected.  
For use with under counter RO and drinking systems.

### ⚠ WARNING



**THINK  
SAFETY  
FIRST**

Read this Manual **BEFORE** using this equipment.  
Failure to read and follow all safety and use information  
can result in death, serious personal injury, property  
damage, or damage to the equipment.  
Keep this Manual for future reference.

## Valve Installation

### NOTICE

- Step 1 Turn off the water supply to the filtration system at the cold water source valve.
- Step 2 The leak detector should be mounted flat in the lowest ground point near the filtration system so in the event a leak occurs the water will flow in the direction of the valve.
- Step 3 Clean the designated installation area with rubbing alcohol.
- Step 4 Peel the red backing tape from the two mounting feet on the base of the shutoff valve and press down firmly over the chosen install area. You may also mount the valve using the screws included in the kit.
- Step 5 Cut the systems water supply tube to splice in the valve. Connect the tubing from the water source valve to the horizontal fitting on the shutoff valve labeled "in" by pushing the tubing in firmly until fully seated.
- Step 6 Connect the tubing leading from the filtration system to the vertical fitting on the shutoff valve labeled "out" by pushing the tubing in firmly until fully seated.
- Step 7 Turn on the water supply to the filtration unit and check for leaks.

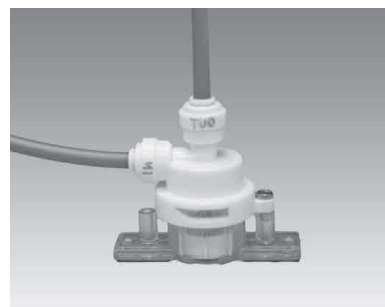
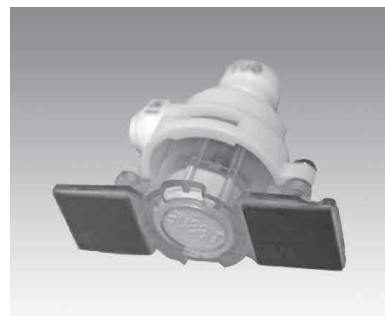
## Replacing The Tablet

### NOTICE

- Step 1 Turn off the water supply at the cold water source valve.
- Step 2 Using a Phillips screwdriver, loosen and remove screw from the top of the valve.
- Step 3 Twist the upper white assembly counterclockwise, lift up and remove old tablet.
- Step 4 Make sure the valve and the surrounding area is dry before replacing the tablet.
- Step 5 Insert the new applicator tablet into the clear plastic housing.
- Step 6 Replace the upper white cap onto the clear plastic base by twisting it clockwise until seated.
- Step 7 Replace Phillips screw and tighten (**do not over tighten as this may damage the valve unit**).
- Step 8 Turn on the water supply to the filtration unit and check for leaks.

### ⚠ CAUTION

Keep Leak Protector Replacement Cartridges (pads) out of the reach of children.



Part Number: LPSOV  
Replacement Pads: LPSOV-PAD

**WARNING:** This product contains chemicals known to the State of California to cause cancer and birth defects or other reproductive harm.  
**For more information:** [www.watts.com/prop65](http://www.watts.com/prop65)

**LIMITED WARRANTY:** Certain Watts products come with a limited warranty from Watts Regulator Co. Other products may have no warranty or are covered by the original manufacturer's warranty only. For specific product warranty information, please visit [www.watts.com](http://www.watts.com) or the published literature that comes with your product. Any remedies stated in such warranties are exclusive and are the only remedies for breach of warranty. **EXCEPT FOR THE APPLICABLE PRODUCT WARRANTY, IF ANY, WATTS MAKES NO OTHER WARRANTIES, EXPRESS OR IMPLIED. TO THE FULLEST EXTENT PERMITTED BY APPLICABLE LAW, WATTS HEREBY SPECIFICALLY DISCLAIMS ALL OTHER WARRANTIES, EXPRESS OR IMPLIED, INCLUDING BUT NOT LIMITED TO THE IMPLIED WARRANTIES OF MERCHANTABILITY AND FITNESS FOR A PARTICULAR PURPOSE, AND IN NO EVENT SHALL WATTS BE LIABLE, IN CONTRACT, TORT, STRICT LIABILITY OR UNDER ANY OTHER LEGAL THEORY, FOR INCIDENTAL, INDIRECT, SPECIAL OR CONSEQUENTIAL DAMAGES, INCLUDING, WITHOUT LIMITATION, LOST PROFITS OR PROPERTY DAMAGE, REGARDLESS OF WHETHER IT WAS INFORMED ABOUT THE POSSIBILITY OF SUCH DAMAGES.**

**WATTS®**

A Watts Water Technologies Company

**USA:** Tel: (800) 659-8400 • Fax: (800) 659-8402 • [Watts.com](http://Watts.com)

**Canada:** Tel: (905) 332-4090 • Fax: (905) 332-7068 • [Watts.ca](http://Watts.ca)

**Latin America:** Tel: (52) 81-1001-8600 • Fax: (52) 81-8000-7091 • [Watts.com](http://Watts.com)