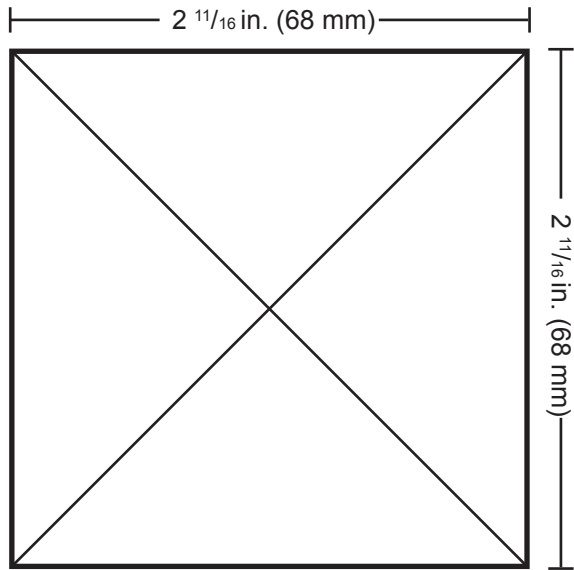


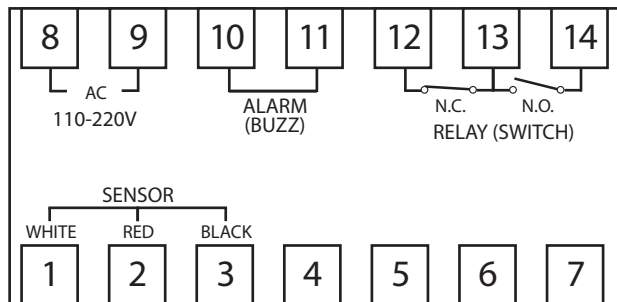
PANEL CUT-OUT DIAGRAM



1. Using a knife, cut the diagram out (cut on the outer part of the line).
2. Align the cut-out to your panel and draw cut marks.
3. Cut the hole in the panel to the precise dimensions of the cut-out:
2-11/16 in. x 2-11/16 in. (68 mm x 68 mm)

→ See the installation section for complete instructions.

CONTACT DIAGRAM



USER'S GUIDE



PS-100 PANEL MOUNT TDS CONTROLLER



Thank you for purchasing HM Digital's PS-100. The PS-100 is a panel mount TDS controller that monitors and controls levels of Total Dissolved Solids (TDS) in water. The controller has a maximum set point to help maintain a limit of TDS allowed in the water. If the TDS level rises to the set point, the controller will activate a warning light, sound an alarm (optional) and switch the dry contact position from the normal position (to operate a valve, pump, etc.). Once the TDS level drops below the set point, this will deactivate the light and alarm and switch the contacts back to the normal position (normally open or closed).

THIS PAGE INTENTIONALLY LEFT BLANK

CONTACT INFO

If you have any problems or questions regarding your controller, please contact HM Digital, Inc.

HM Digital, Inc.
5819 Uplander Way
Culver City, CA 90230
U.S.A

info@hmdigital.com
www.tdsmeter.com
1-800-383-2777

BOX CONTENTS

- | | | |
|------------------|------------------------|----------------------|
| 1. Controller | 3. Sensor cable (grey) | 5. Mounting brackets |
| 2. Sensor (SP-1) | 4. Power cord (black) | 6. U.S. plug adapter |

SPECIFICATIONS

TDS Range: 0 - 999 ppm (mg/L)

Resolution: 1 ppm

Accuracy: $\pm 2\%$ (of the reading)

Temperature Compensation: Automatic (ATC) (1-60°C)

Calibration: Manual by trimmer pot calibration screw

Set-Point: Single point, controlled by on-screen up/down buttons (to any point within the range)

Set-Point Relay: single, isolated, 2A, Max. 220V, resistive load 100,000 strokes

Relay Control: The unit will open or close a circuit via dry contacts when the ppm level reaches or exceeds the control setting (simple switch). It can be used to control a pump, solenoid valve or other device.

Relay Voltage: 5V (the connected device needs its own power source)

Alarm: Optional steady beep (set by user)

Probe: 1/2" NPTF bushing

Cable Length: 3 meter (9.8 ft) shielded cable

Display: Bright tri-color L.E.D.

Power Supply: 110V/230V, $\pm 10\%$ Vac; 50/60Hz

Enclosure: Front and back with ABS

Environment: -10 to 50°C (4 to 122°F); RH max 95% non-condensing

Dimensions: 7.2 x 7.2 x 10.2 cm (2.8 x 2.8 x 4 in.)

Monitor Weight: 476 grams (1 lb 0.8 oz)

WARRANTY

ONE YEAR LIMITED WARRANTY

The PS-100, including both the controller and sensor, is warranted by HM Digital, Inc. ("the Company") to the purchaser against defective materials and workmanship for one (1) year from the date of purchase.

What is covered: Repair parts and labor, or replacement at the Company's option. Transportation charges for repaired or new product to be returned to the purchaser.

What is not covered: Transportation charges for the defective product to be sent to the Company. Any consequential damages, incidental damages, or incidental expenses, including damages to property. This includes damages from abuse or improper maintenance such as tampering, wear and tear, water damage, or any other physical damage. The Company's products are not waterproof and should not be fully submerged in water. Products with any evidence of such damage will not be repaired or replaced. See additional note below.

How to obtain warranty performance: Attach to the product your name, address, description of problem, phone number, and proof of date of purchase, package and return to:

HM Digital, Inc.
ATTN: Returns
5819 Uplander Way
Culver City, CA 90230
U.S.A.

Implied Warranties: Any implied warranties, including implied warranties of merchantability and fitness for a particular purpose, are limited in duration to five years from date of purchase. Some states do not allow limitations on how long an implied warranty lasts, so the above limitation may not apply to you. To the extent any provision of this warranty is prohibited by federal and state law and cannot be preempted, it shall not be applicable. This warranty gives you specific legal rights, and you may also have other rights, which vary from state to state.

NOTE: Warranties are product-specific. Third-party products and products deemed by HM Digital as "accessories" are not covered under warranty. Third-party products and accessories include, but are not limited to, batteries, fuses, mounting brackets, plug adaptors and fittings.

INSTALLATION INSTRUCTIONS

IMPORTANT: Double-check your contacts prior to connecting the controller to a power source. Incorrect connections could result in shorting out the unit.

1. Remove the contents from the box.
2. Insert the controller into the panel. A square hole must be cut into the panel with dimensions of 2-11/16 in. x 2-11/16 in. (68 mm x 68 mm). Page 8 includes a cut-out diagram.
3. Mount the controller to the panel by inserting the mounting brackets into the grooves on the bottom and top of the controller. Fasten the brackets with the included screws.
4. View the contact diagram on the side of the controller (also on page 8).
5. **Do NOT connect to a power source yet!** Connect the black power cord to the contacts #8 & #9 (110 V - 230V). It does not matter which color wire is connected to the contacts. Screw in tight with a Phillips head screwdriver. (Note – If in the U.S. (or a country that uses Type A or B plugs/sockets), connect the included plug adapter to the power cord).
6. If using a pump, valve, etc., connect a relay wire (not included) to contacts #13 and #14 for a normally open position OR to contacts #12 and #13 for a normally closed position.
7. Connect the gray sensor cable by attaching the white wire to contact #1, the red to #2, and the black to #3.
8. Align the pins of the sensor to the cable and attach. Screw the tightening ring closed.
9. Insert the sensor electrode into a female ½" NPTF threaded fitting. Attach to your water source. Ensure the orientation of the sensor is perpendicular to the flow of the water. Water should flow equally over both pins. (If using a T, if you look through the top of the T, you should see both pins equally side-by-side. If using the sensor in a tank, ensure that there are no air bubbles trapped between the pins or in a fitting.)
10. To DISCONNECT the audible alarm, disconnect the blue wire from contacts #10 and #11.
11. Plug the power cord into an electrical outlet. The controller does not have a power switch and will automatically power on when the power is connected.

USAGE INSTRUCTIONS

1. The controller will turn on when the power cord is plugged into an electrical outlet.
2. Open the cover on the front of the controller by gently pulling down.
3. To turn off the controller, unplug it from the electrical outlet.

Setting the Control Set Point

1. To set the control set point (to activate a device via the relay), press the SET button once. The TDS reading will switch to a flashing number (the current set point).
2. Press the UP or DOWN buttons until the desired set point is reached. Pressing once will advance the reading by a single digit. Press and hold the button to advance the reading quickly.
3. Press the SET button again. This will save the set point to memory.
4. If the TDS level reaches the saved set point, the controller will switch the contacts from the normal position (either normally open or normally closed), thereby operating the pump, solenoid valve, or other device attached to contacts #12 & 13 or #13 & 14.

USAGE INSTRUCTIONS (continued)

- Once the TDS falls below the set point, the contacts will switch back to the normal position.
- The alarm (if connected) will sound continuously while the TDS level is over the set point. The only way to turn it off is by lowering the TDS level below the set point or disconnecting the blue wire from contacts #5 and #11.

Calibration

Your controller was factory calibrated to 342 ppm. This level is suitable for most tap water/filtered water applications, so it is ready to use out of the box. However, you may need to re-calibrate based on your needs, as well as from time-to-time to ensure best results.

To calibrate:

- Obtain a certified calibration solution that is correct for your needs. The calibration solution should be NaCl. HM Digital's 342 ppm NaCl is recommended.
- Check the controller against the calibration solution. Prior to inserting the sensor into the calibration solution, be sure the sensor is dry and free of any TDS residue. If the reading on the controller does not match the calibration value, you will need to re-calibrate. If using a fitting, calibrate with the fitting on the sensor. (See step 5 for additional information regarding the calibration value.)
- For better accuracy, calibrate to a flowing solution. If this is not possible, you can calibrate to a still solution. Ensure the fitting is completely filled with solution and there are no air bubbles. This step is critical for proper calibration.
- If the reading on the controller does not match the solution, adjust the reading up or down by gently turning the trimmer pot calibration screw on the face of the unit (marked as "ADJUST") clockwise or counterclockwise to raise or lower the reading.
- If calibrating to a still (not flowing) solution, calibrate to 3% above the level of the calibration solution. This will accommodate for the lack of flowing water, which the controller is programmed for. For example, if the calibration solution is 342 ppm, adjust the screw until it reads 352 ppm. If you are calibrating to a flowing solution, calibrate to the level of the solution.
- Gently release the screwdriver from the trimmer pot.
- Your controller is now calibrated. There is no need to do anything else.

TROUBLESHOOTING

Problem	Potential Solution(s)
The controller will not power on.	1. Check to ensure the connections are correct (double-check 110V vs. 220V). 2. Check to ensure the power cable is plugged in.
Incorrect readings.	1. Try to recalibrate the controller. Note that the calibration should be done with a fitting on (if using a fitting). 2. Check for interference caused by other machinery or electronics (near the controller or cables).
The relay control does not work.	1. Double-check the connections for contacts #12, 13 & 14. 2. Make sure that the set point is properly set.
The display shows "Err".	1. The TDS level is out of range. 2. The sensor is not connected. 3. The sensor is dirty or damaged.

If troubleshooting does not solve the problem, please contact HM Digital for assistance. If your controller is still under warranty, please return the controller to HM Digital for repair or replacement (see page 6).

Cleaning

To clean the sensor electrodes, use rubbing alcohol and a cotton swab. Lightly clean the electrodes. Rinse with DI, RO or distilled water. Air dry.

Sensor Replacement

If your sensor has been damaged, you can purchase a new one (model SP-1) without the need to purchase a new controller.

Contact your authorized HM Digital distributor for a replacement sensor. If you cannot locate an HM Digital distributor, contact HM Digital at info@hmdigital.com