

Assembly Instruction Manual

For Models:

UPCF-0835, UPCF-0948

UPCF-1054, UPCF-1252

UPCCF-0835, UPCCF-0948

UPCCF-1054, UPCCF-1252

Upflow Carbon Filters and Upflow Catalytic Carbon Filters

Parts Included in the Package;

1. Vortech Mineral Tank
2. Carbon Media - depending on tank size.
Only fill tank 2/3 leaving 1/3 for expansion.
3. Clack 1190 in/out head
4. Clack Bypass Valve
5. Plumbing Adapters (Clack V3007 1" NPT)
6. Upper distributor Basket (do not install without)
7. Funnel for loading media
8. Silicon O-ring lube

Additional Supplies Needed:

- Masking or duct tape to cover distributor tube during media loading



Warning!

Do not use a wrench to tighten fittings and parts. Over tightening can lead to cracks causing leaks. Only hand tightening is needed.

Product Specifications and Operating Parameters

Part No	Tank Size	Media Amount	Pipe Size	Service Flow	Working Pressure	Operating Temperature	pH Range
UPCF-0835	8x35	.75 cu ft	1"	2-4 gpm	25-80 psi	36°F-120°F	6-11
UPCF-0948	9x48	1.0 cu ft	1"	2-6 gpm	25-80 psi	36°F-120°F	6-11
UPCF-1054	10x54	1.5 cu ft	1"	3-9 gpm	25-80 psi	36°F-120°F	6-11
UPCF-1252	12x52	2.0 cu ft	1"	4-12 gpm	25-80 psi	36°F-120°F	6-11
UPCCF-0835	8x35	.75 cu ft	1"	2-4 gpm	25-80 psi	36°F-120°F	6-11
UPCCF-0948	9x48	1.0 cu ft	1"	2-6 gpm	25-80 psi	36°F-120°F	6-11
UPCCF-1054	10x54	1.5 cu ft	1"	3-9 gpm	25-80 psi	36°F-120°F	6-11
UPCCF-1252	12x52	2.0 cu ft	1"	4-12 gpm	25-80 psi	36°F-120°F	6-11

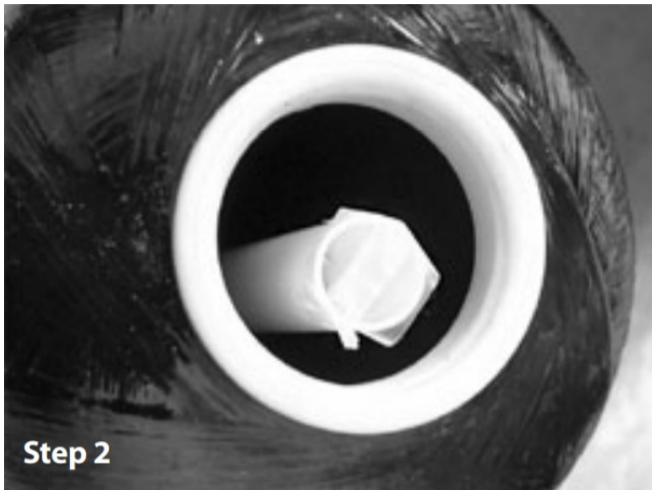
Assembly Instructions

Step 1

Carefully unpack all of the items from packaging including the fiberglass Vortech tank.

Step 2

Place tape over the end of the distributor tube. This will prevent media from getting into the tube while filling. Be sure the distributor tube is solidly attached to the bottom Vortech plate by lightly pulling up on the tube. If the connection is not solid, call for technical assistance, do not load the media.



Step 3

Place the funnel into the opening of the tank fitting the distributor tube through the middle as shown



Step 4

Using the funnel, pour the carbon into the tank. Avoid breathing the carbon dust while filling. Fill the tank 2/3 full leaving the top 1/3 empty for expansion room. It is possible you received more media than your tank calls for. Do not overfill, and make sure you leave the top 1/3 of the tank empty.

Chart for 1/3 expansion depth by tank size

8x35	9x48	10x54	12x52
12"	16"	18"	18"

Step 5

When tank is filled to the proper level, be sure to remove the protective tape and clean any residue from the tube.

Step 6

Install the upper distributor basket by aligning the tabs with the openings on the underside of the in/out head. Push the basket into the head and turn clockwise to lock it in place.



Step 7

Screw the head on to the tank. Fit the basket over the distributor tube and push down to get the threads to line up. Tighten until it's snug, no tools are necessary.

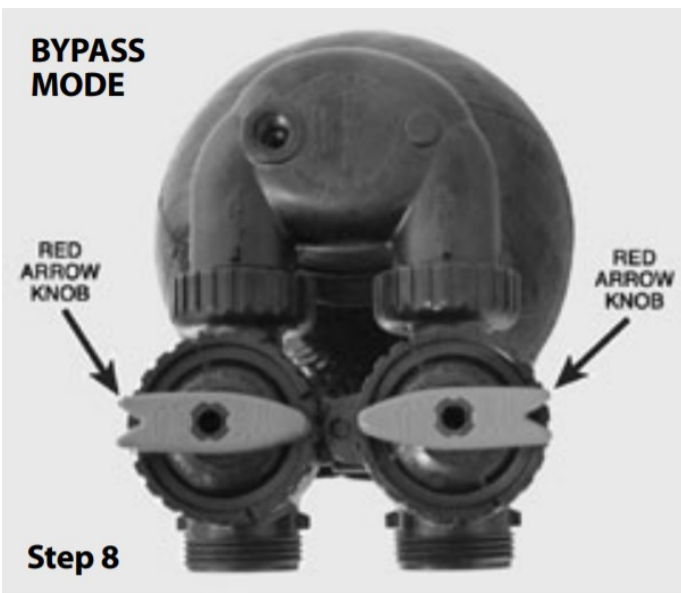
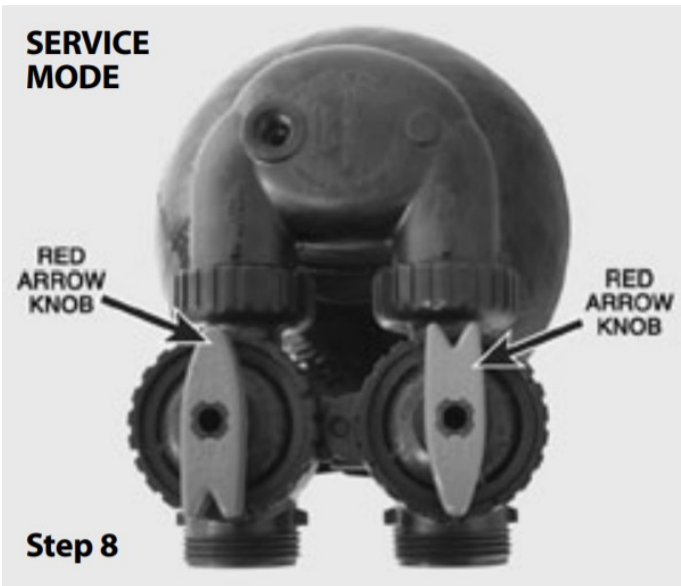


Step 8

Attach the bypass to the in/out head by pressing it onto the head and then tightening the nuts on to the threaded ports of the head. Hand tighten until snug.

NOTE: The bypass valve can be used universally for either downflow or upflow configurations. This system is design to be used in the upflow direction. The red valve handles "arrows" will indicate the opposite of water flow when used in upflow. When the arrows are in line with outlets the valves are open.

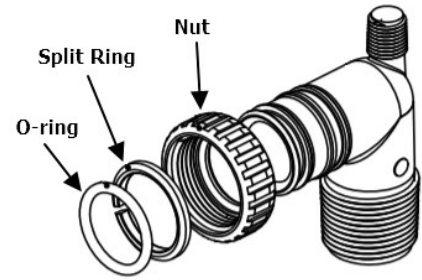
For Upflow Configuration:



See diagram on last page for an illustration of water flow direction

Step 9

Assemble the two male elbows. Slide the connecting nut on the end of the elbow. Next, slide the split ring onto the elbow allowing it to snap into the inner most groove. Last, slide the o-ring into the outer groove and repeat for the other elbow assembly.



Step 10

Fit the elbow end with o-ring and nut assembly onto the bypass and tighten the connector nuts. These adaptors can be used in any direction to make installation simpler.

This is the standard adapter fittings included with this package. Other adapter fitting configurations are available.



Set up for Soak and Initial Flush

Attach the inlet of the filter (the connection on the right) to your plumbing using standard, code approved methods. The connections are 1" male pipe thread, so you may have to make some adaptations. If the inlet and outlet ports on the filter are connected in reverse, the filtration system will not function properly.

Important: Connect only the inlet side of the filter to the house plumbing initially.

Allow Carbon Media to Soak

Important: Very slowly, fill the tank with water until it comes out of the outlet. Let the carbon media soak for at least 24 hours. When carbon media is dry it needs to saturate before water flows through. If this step is not followed the media will float and can severely clog the upper basket.

Once the media has soaked for 24 hours, follow the flush and rinse steps

Flush / Rinse

- After the filter is installed to the incoming water and media is soaked, attach a garden hose to the outlet adapter. Put the end of the garden hose outside or run it to a drain. Then, turn on the inlet water to the filter so that water flows out of the filter slowly, no faster than half speed. Let the filter rinse at half speed for 10 to 15 minutes, then gradually open the inlet water until fully open.
- When you feel that the carbon has rinsed sufficiently — usually 5 or 10 minutes more — close the inlet water valve, remove the garden hose from the outlet of the filter and connect the outlet of the filter to your house plumbing. The filter is now installed, and the water is ready to use.
- It is possible for some carbon fines (small visible black specs) to still show up inside the house however, following the soaking then flushing process typically eliminates them.



NOTE: This is a UPFLOW filtration system and is fed through the UPFLOW INLET. Feeding the system from the downflow inlet will cause the system to not filter properly

neo·PURE™