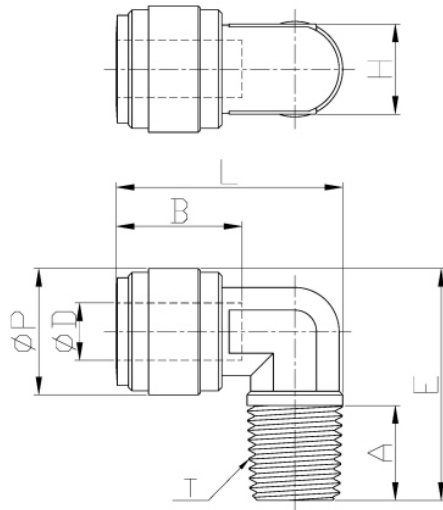


Male Elbow (BPST)

Pressure Ratings			
	< 5/16"	3/8"	1/2"
33 °F	290 psi	232 psi	203 psi
68 °F	290 psi	232 psi	203 psi
150 °F	232 psi	203 psi	116 psi

Torque Allowance					
Thread Size	1/8"	1/4"	3/8"	1/2"	3/4"
Max Torque	1.1 ft lbs	1.1 ft lbs	2.2 ft lbs	2.2 ft lbs	2.9 ft lbs



Model	ØD	ØP	T(BSPT)	A	B	E	H	L	WEIGHT(g)
AME4M-R1	04	15.0	1/8	9.1	14.7	25.6	10	25.2	4.2
AME4M-R2	04	15.0	1/4	13.1	14.7	30.6	10	26.8	5.6
AME6M-R1	06	15.0	1/8	9.1	16.1	25.6	10	25.4	4.1
AME6M-R2	06	15.0	1/4	13.1	16.1	30.6	10	27	5.1
AME6M-R3	06	17.6	3/8	13.5	16.1	32.6	13	33.1	8.4
AME8M-R2	08	17.6	1/4	13.1	17.5	32.2	13	31.5	7
AME8M-R3	08	17.6	3/8	13.5	17.5	32.6	13	33.5	8
AME10M-R2	10	23.6	1/4	13.1	20.1	38.3	17	37.5	14.1
AME10M-R3	10	20.0	3/8	13.5	20.1	35.7	14	33.9	9.2
AME12M-R2	12	23.6	1/4	13.1	24.7	38.3	17	38.2	13.1
AME12M-R3	12	23.0	3/8	13.5	24.7	38.3	17	38.4	13.2
AME12M-R4	12	23.0	1/2	16.3	24.7	41.4	17	40.7	15.6