



## 3/8" FLOW SIZE ADVANCED PLASTIC LATCH **60PP-BLK Series**

Nordson MEDICAL's LinkTech line of 60PP-BLK quick connect couplings are produced from medical grade, gamma sterilizable, UV-resistant polypropylene. These cost efficient high flow couplings offer a larger, more robust thumb-latch and greater chemical resistance. They are available with internal shut-off valves or straight through designs. They are intuitive to use and make an audible "click" when coupled. These couplings are available in a UV-resistant black-out color. The solid "black-out" color allows the ability to color key applications, as well as makes these couplings significantly more resistant to UV radiation due to its already advanced raw material capabilities. The 60PP-BLK Series couplings interconnect with all other 60 Series couplings as well as other similar industry thumb-latch type high flow couplings.

### FEATURES & BENEFITS

- Advanced plastic thumb-latch couplings available with hose barb and threaded terminations
- Offer greater chemical resistance
- "Black-out" color option for UV resistance
- Large, robust thumb latch for easy use
- Strong, panel-mount designs
- Available with internal shut-off valves or straight-through designs
- Interconnect with each other and with similar industry thumb-latch high flow couplings

### SPECIFICATIONS

- **Materials:**
  - Bodies & Terminations: UV Resistant Medical Grade Polypropylene
  - Internal Valves: UV Resistant Medical Grade Polypropylene
  - Internal Valve Springs: 316 Stainless Steel
  - Latch Spring: Stainless Steel
  - O-rings: Peroxide-cured EPDM (others available)
  - Thumb-latch: UV Resistant Medical Grade Polypropylene
- **Performance Ratings:**
  - Operating Pressure: Vacuum to 60psi; (4.2bar)
  - Temperature: 32°F to 160°F; (0°C to 71°C)
  - Flow Capacity: 3/8" (9.5 mm)
  - Fits Tubing IDs: 1/4" (6.4 mm) - 3/4" (19.0 mm)

3/8" FLOW SIZE -  
ADVANCED PLASTIC LATCH  
**60PP-BLK Series**



QUICK CONNECT COUPLINGS

**Part Style**

**Part Image**

**Open Flow Straight**

1/4" (6.4 mm) tube ID  
Male Only



**Valved Straight**

1/4" (6.4 mm) tube ID  
3/8" (9.5 mm) tube ID  
1/2" (12.7 mm) tube ID & threaded  
Female and Male



**Valved Elbow**

1/2" (12.7 mm) tube ID  
Male ONLY



3/8" FLOW SIZE  
ADVANCED PLASTIC LATCH  
**60PP Series**

Nordson MEDICAL's LinkTech line of 60PP quick connect couplings are produced from medical grade, gamma sterilizable polypropylene. These cost efficient high flow couplings offer a larger, more robust thumb-latch and greater chemical resistance. They are available with internal shut-off valves or straight through designs. They are intuitive to use and make an audible "click" when coupled. These couplings are available in a standard Modern Cool Grey color. The 60PP Series couplings interconnect with all other 60 Series couplings as well as other similar industry thumb-latch type high flow couplings.

## FEATURES & BENEFITS

- Advanced plastic thumb-latch couplings available with hose barb and threaded terminations
- Offer greater chemical resistance
- Large, robust thumb latch for easy use
- Strong, panel-mount designs
- Available with internal shut-off valves or straight-through designs
- Interconnect with each other and with similar industry thumb-latch high flow couplings

## SPECIFICATIONS

- **Materials:**
  - Bodies & Terminations: Medical Grade Polypropylene
  - Internal Valves: Medical Grade Polypropylene
  - Internal Valve Springs: 316 Stainless Steel
  - Latch Spring: Stainless Steel
  - O-rings: Peroxide-cured EPDM (others available)
  - Thumb-latch: Medical Grade Polypropylene
- **Performance Ratings:**
  - Operating Pressure: Vacuum to 60psi; (4.2bar)
  - Temperature: 32°F to 160°F; (0°C to 71°C)
  - Flow Capacity: 3/8" (9.5 mm)
  - Fits Tubing IDs: 1/4" (6.4 mm) - 3/4" (19.0 mm)

3/8" FLOW SIZE  
ADVANCED PLASTIC LATCH  
**60PP Series**



QUICK CONNECT COUPLINGS

**Part Style**

**Part Image**

**Open Flow Straight**

1/4" (6.4 mm) tube ID  
1/2" (12.7 mm) tube ID  
Female and Male



**Open Flow Panel Mount**

3/8" (9.5 mm) tube ID  
1/2" (12.7 mm) tube ID  
Female Only



**Open Flow Elbow**

1/2" (12.7 mm) tube ID  
Male ONLY



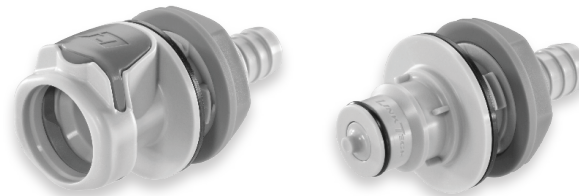
**Valved Straight**

3/8" (9.5 mm) tube ID & threaded  
1/2" (12.7 mm) tube ID & threaded  
3/4" (19.0 mm) tube ID  
Female and Male



**Valved Panel Mount**

3/8" (9.5 mm) tube ID  
1/2" (12.7 mm) tube ID  
Female and Male



**Valved Elbow**

3/8" (9.5 mm) tube ID  
1/2" (12.7 mm) tube ID  
Male ONLY



3/8" FLOW SIZE  
ADVANCED PLASTIC LATCH  
**60PS-BLK  
Series**

Nordson MEDICAL's LinkTech line of 60PS-BLK quick connect couplings are produced in high performance thermoplastic UV-Resistant Udel® Polysulfone material. The solid "black-out" color allows these high flow couplings the ability to color key applications and provides a greater UV radiation resistance than 60PS-White couplings, in addition to their inherent stability at high temperatures. They are available with internal shut-off valves or straight through designs. They are intuitive to use and make an audible "click" when coupled. The 60PS-BLK Series couplings offer an improved Panel Mount design that has a more reliable thumb-latch which makes it more durable, easier and faster to use. All 60PS-BLK Series couplings interconnect with all other 60 Series couplings as well as other similar industry thumb-latch type high flow couplings.

## FEATURES & BENEFITS

- Advanced plastic thumb-latch couplings available with hose barb and threaded terminations
- Stable at higher temperatures
- "Black-out" color option for UV resistance
- Large, robust thumb latch for easy use
- Strong, panel-mount designs
- Available with internal shut-off valves or straight-through designs
- Interconnect with each other and with similar industry thumb-latch high flow couplings

## SPECIFICATIONS

- **Materials:**
  - Bodies & Terminations: UV-Resistant Udel® Polysulfone
  - Internal Valves: UV-Resistant Udel® Polysulfone
  - Internal Valve Springs: 316 Stainless Steel
  - Latch Spring: Stainless Steel
  - O-rings: Peroxide-cured EPDM (others available)
  - Thumb-latch: UV-Resistant Udel® Polysulfone
- **Performance Ratings:**
  - Operating Pressure: Vacuum to 125psi; (8.6bar)
  - Temperature: -40°F to 280°F; (-40°C to 138°C)
  - Flow Capacity: 3/8" (9.5 mm)
  - Fits Tubing IDs: 1/4" (6.4 mm) - 3/4" (19.0 mm)

3/8" FLOW SIZE  
ADVANCED PLASTIC LATCH  
**60PS-BLK Series**



QUICK CONNECT COUPLINGS

**Part Style**

**Part Image**

**Open Flow Straight**

1/2" (12.7 mm) tube ID  
Female Only



**Open Flow Panel Mount**

1/2" (12.7 mm) tube ID  
Female Only



**Valved Panel Mount**

3/8" (9.5 mm) tube ID  
Male Only



3/8" FLOW SIZE  
ADVANCED PLASTIC LATCH  
**60PS Series**

Nordson MEDICAL's LinkTech line of 60PS quick connect couplings are produced in high performance thermoplastic Food Grade Udel® Polysulfone material. These high flow couplings are more durable and stable at higher temperatures. They are available with internal shut-off valves or straight through designs. They are intuitive to use and make an audible "click" when coupled. The 60PS Series couplings offer an improved Panel Mount design that has a more reliable thumb-latch which makes it more durable, easier and faster to use. All 60PS Series couplings interconnect with all other 60 Series couplings as well as other similar industry thumb-latch type high flow couplings.

## FEATURES & BENEFITS

- Advanced plastic thumb-latch couplings available with hose barb and threaded terminations
- Stable at higher temperatures
- Large, robust thumb latch for easy use
- Strong, panel-mount designs
- Available with internal shut-off valves or straight-through designs
- Interconnect with each other and with similar industry thumb-latch high flow couplings

## SPECIFICATIONS

- **Materials:**
  - Bodies & Terminations: Food Grade Udel® Polysulfone
  - Internal Valves: Food Grade Udel® Polysulfone
  - Internal Valve Springs: 316 Stainless Steel
  - Latch Spring: Stainless Steel
  - O-rings: Peroxide-cured EPDM (others available)
  - Thumb-latch: Food Grade Udel® Polysulfone
- **Performance Ratings:**
  - Operating Pressure: Vacuum to 125psi; (8.6bar)
  - Temperature: -40°F to 280°F; (-40°C to 138°C)
  - Flow Capacity: 3/8" (9.5 mm)
  - Fits Tubing IDs: 1/4" (6.4 mm) - 3/4" (19.0 mm)

3/8" FLOW SIZE  
ADVANCED PLASTIC LATCH  
**60PS Series**



QUICK CONNECT COUPLINGS

**Part Style**

**Part Image**

**Open Flow Straight**

3/8" (9.5 mm) tube ID  
1/2" (12.7 mm) tube ID & threaded  
Female and Male



**Open Flow Panel Mount**

3/8" (9.5 mm) tube ID  
Male Only



**Open Flow Elbow**

3/8" (9.5 mm) tube ID  
Male ONLY



**Valved Straight**

3/8" (9.5 mm) tube ID & threaded  
1/2" (12.7 mm) tube ID & threaded  
Female and Male



**Valved Panel Mount**

3/8" (9.5 mm) tube ID  
1/2" (12.7 mm) tube ID  
Female Only

