

F-US Type - 1.5 to 2.5 gpm

Flow Regulator - Pressure Compensating



flow, stop and go®

Features and Benefits

- ▶ Operates as a flexible orifice to provide reliable flow regulation from 15 to 150 psi.
- ▶ Noiseless and trouble free operation over many years.
- ▶ Press-fit design helps meet 8 lb pull-out force requirement.
- ▶ Select flow rates help with WaterSense requirements for faucets or showers.

Options Available

Part #	Color	gpm	L/min
58.7570.1	White / Green	1.50	5.7
58.7571.1	White / Blue	1.75	6.6
58.7574.1	White / Lilac	2.00	7.6
58.7572.1	White / Yellow	2.20	8.3
58.7573.1	White / Gray	2.50	9.5



Certification

ANSI / NSF 61

Materials

Name	Material
Body	Acetal
Core	Acetal
O-ring	EPDM

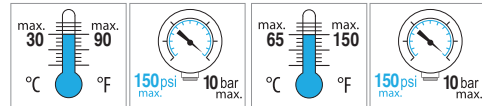
Technical Data

Medium: Clear water only

Wetted surface area: 1373.28 mm²

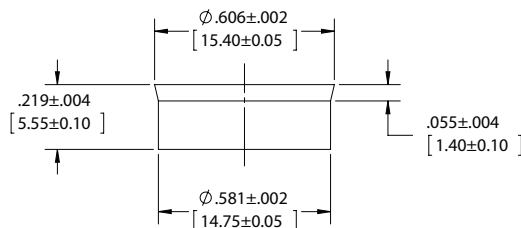
Continuous

Short-term (5 minutes max.)



Dimensions

Flow Regulator Dimensions



Mounting Dimensions

