

# FLOW METER SERIES



Panel Mount  
Adjustable Panel Mount Inline



## STANDARD FEATURES

- Easy to read
- Calibrated in GPM and LPM
- Flow ranges from 0.1 to 16 GPM
- Corrosion resistant
- Dependable performance
- Stainless Steel Internals

## PRODUCT SPECIFICATIONS



### Max Temperature

120°F (49°C)



### Accuracy

+/- 5%



### Max Pressure

120 psi (827 kPa)\*



### Max Torque

3 ft-lbs



### Materials of Construction

Body: Acrylic

O-Rings: EPDM

Threaded Connection: Polypropylene

Guide: 304 Stainless Steel

Float: 304 Stainless Steel

\*Temperature ratings vary and depend on pressure and time under load

## QUESTIONS?

Ask our Service Representatives at:

888.859.1188 Mon. - Fri. 8a - 8p, Sat 8:30a - 4:30p EST.

Neologic Inc. | Greenville SC | Salt Lake City UT | Houston TX

All rights and illustrations reserved. Manufacturer reserves the right to make changes without notice.  
©2018 Neologic Solutions.

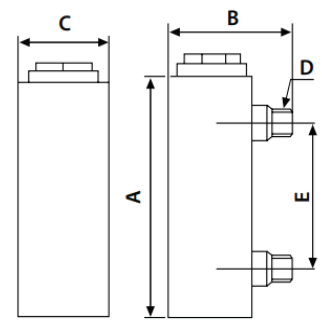
# FLOW METER SERIES



## PRODUCT

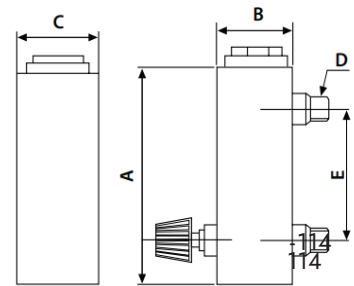
### FMP0 Series Panel Mount Flow Meters

Part Number	Range		Dimensions (in)				
	GPM	LPM	A	B	C	D	E
FMP0-011-04	0.1-1	0.4-4	6.61	1.37	1.26	1/4" MNPT	5.00
FMP0-022-06	0.2-2	0.8-8	8.11	2.75	1.26	3/8" MNPT	6.50
FMP0-055-08	0.5-5	2-18	8.11	2.75	1.26	1/2" MNPT	6.50
FMP0-210-12	2-10	8-37	8.66	3.66	1.54	3/4" MNPT	6.50
FMP0-216-16	2-16	8-60	8.66	3.66	1.54	1" MNPT	6.50



### FMP1 Series Panel Mount Adjustable Flow Meters

Part Number	Range		Dimensions (in)				
	GPM	LPM	A	B	C	D	E
FMP1-011-04	0.1-2	0.4-4	6.61	1.37	1.26	1/4" MNPT	5.00
FMP1-022-06	0.2-2	0.8-8	8.11	2.75	1.26	3/8" MNPT	6.50
FMP1-055-08	0.5-5	2-18	8.11	2.75	1.26	1/2" MNPT	6.50
FMP1-210-12	2-10	8-37	8.66	3.66	1.54	3/4" MNPT	6.50
FMP1-216-16	2-16	8-60	8.66	3.66	1.54	1" MNPT	6.50



### FMS1 Series Inline Flow Meters

Part Number	Range		Dimensions (in)			
	GPM	LPM	A	B	C	D
FMS1-011-08	0.1-1	0.44	8.26	7.09	1.26	1/2" FNPT
FMS1-022-08	0.2-2	0.8-8	8.26	7.09	1.26	1/2" FNPT
FMS1-055-08	0.5-5	2-18	8.26	7.09	1.26	1/2" FNPT
FMS1-110-12	1-10	4-37	10.94	9.29	2.01	3/4" FNPT
FMS1-220-16	2-20	8-75	10.43	9.25	2.01	1" FNPT
FMS1-530-16	5-30	19-114	10.43	9.25	2.01	1" FNPT

