



SCOUT^{MAAT}™

Product Info



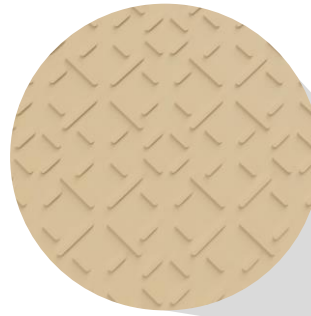
Scout Mat™ Technical Data

CONSTRUCTION	One piece design	
LENGTH	96	inches
WIDTH	48	inches
THICKNESS	0.5	inches
USABLE SURFACE AREA	32	sq. ft.
WEIGHT	88	lbs.
LOGISTICS	510	mats/load
COLOR	Tan (custom colors and logo available)	
MATERIALS	HDPE blend	
SUSTAINABILITY	100% recyclable	
STRENGTH	180,000	lbs
FLAMMABILITY RESISTANCE	UL94	
ESTIMATED USEFUL LIFE	10	years
WARRANTY	1	year

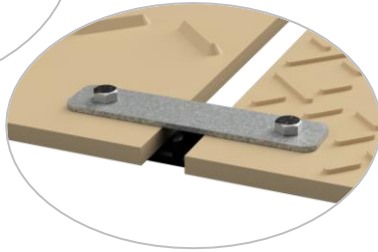
Customization	
Standard Color	Tan
Custom Color Available	Yes
Custom Name & Logo	Yes
Custom Tread Patterns	Yes



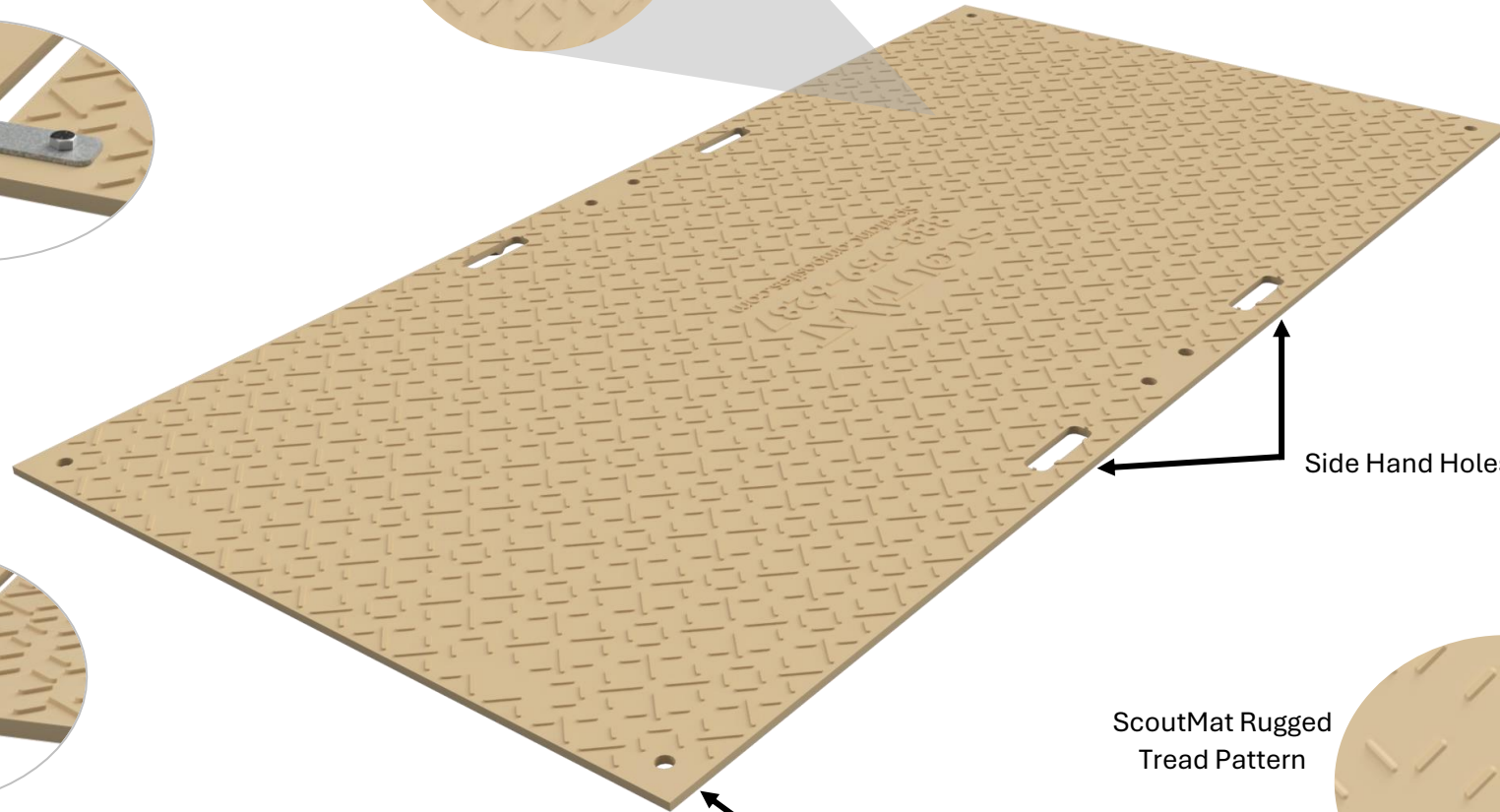
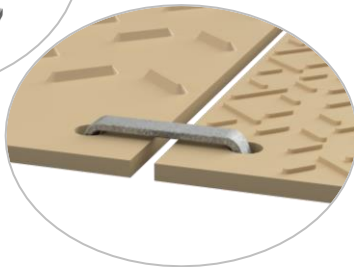
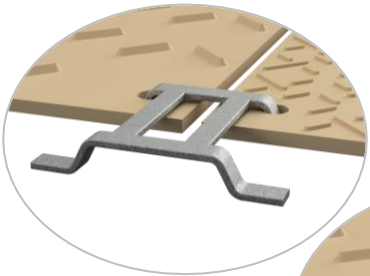
ScoutMat Pedestrian
Tread Pattern



4-Way & 2-Way
Undermount



4-Way & 2-Way
Overmount



Side Hand Holes

ScoutMat Rugged
Tread Pattern

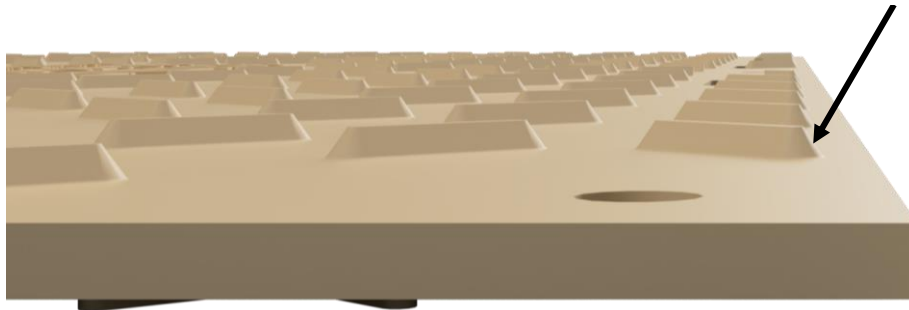


Mounting Holes

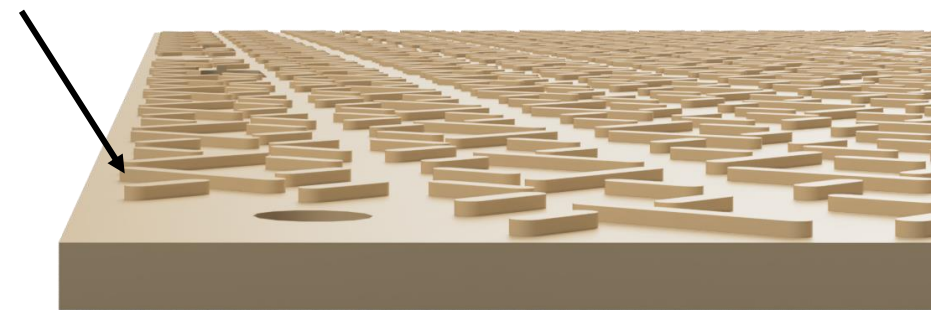
→ HDPE materials do not absorb or retain chemicals (inert)
→ Temperature range- typically HDPE materials begin to become more brittle below -20F - -30F



Rugged Tread Height: 5/16 Inch



Pedestrian Tread Height: 1/8 Inch



SCOUT^{MAAT}

CONNECTORS

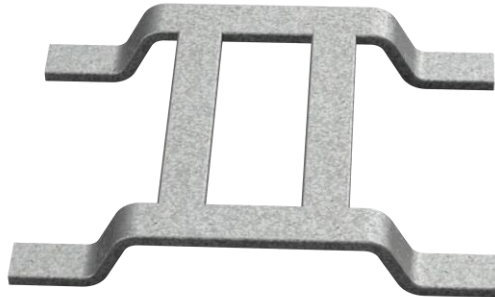
2-WAY OVERMOUNT



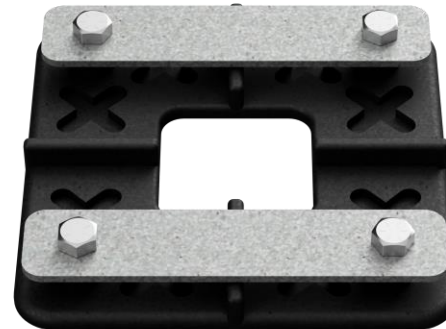
2-WAY UNDERMOUNT



4-WAY OVERMOUNT



4-WAY UNDERMOUNT

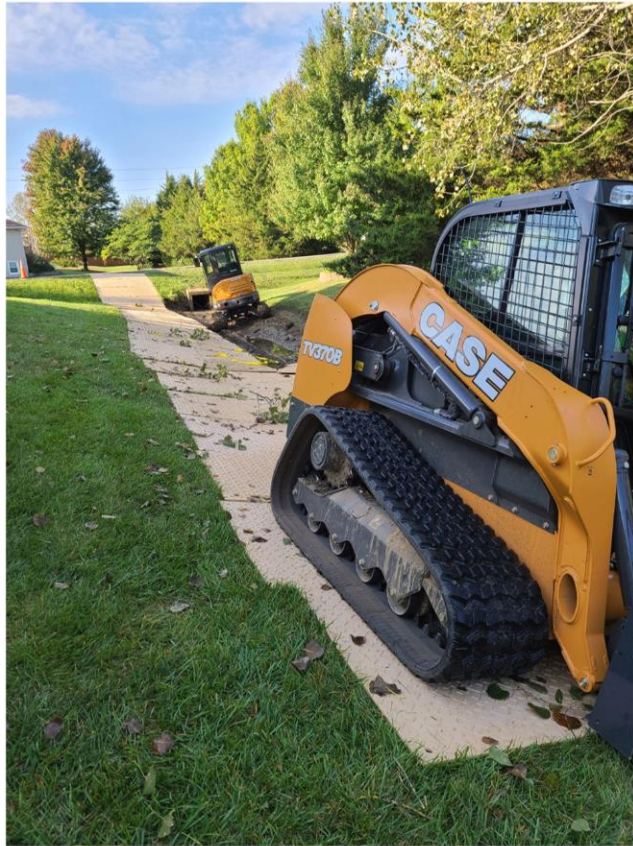


DRAG HOOK



Scoutmat in different applications

SCOUTMAT™





SCOUTMAT™