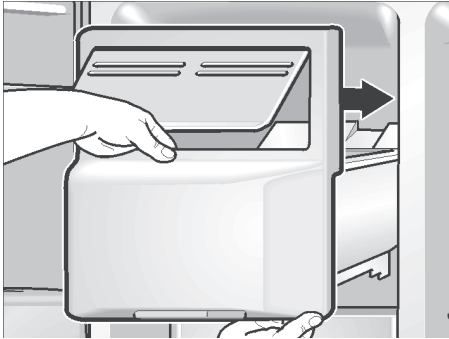


Inserting the ice cube container

- ❑ Push the ice cube container all the way back onto the supports until it locks into position.



- ❑ If the container cannot be pushed all the way back, twist the screw conveyor in the container.

Ice cube production continues.

Disconnecting the ice cube maker

If ice cubes are not to be dispensed for longer than 1 week (e.g. holiday), temporarily disconnect the ice cube maker to prevent the ice cubes from freezing together.



- ❑ Press the **Ice Maker Lock** button. The symbol lights up.
- ❑ Remove the ice cube container, empty and re-insert. Ensure that the ice cube container engages with the support.

Switching on the ice cube maker again:

- ❑ Press the **Ice Maker Lock** button. The symbol goes out.

Water filter

⚠ WARNING ⚠

To avoid serious illness or death, do not use water that is microbiological or chemical unsafe or of unknown quality without adequate disinfection or other treatment before or after use of filter.

Exchanging the filter

⚠ WARNING ⚠

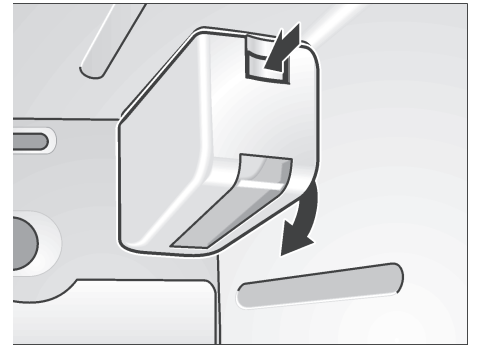
To avoid electrical shock which can cause severe personal injury or death, disconnect power to appliance before changing the filter. After changing, reconnect power.

⚠ WARNING ⚠

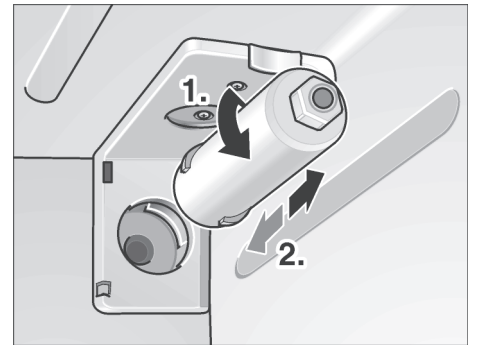
- After installing a new water filter always discard the ice production of the first 24 hours after switching on the icemaker.
- If ice has not been used for a prolonged time, discard all ice cubes in the bin and discard the ice production of the next 24 hours.
- If appliance or ice was not actively used for several weeks or months or ice cubes have an unpleasant taste or odor, change water filter.
- Air trapped in system may cause water and cartridge to eject. Use caution when removing.
- The filter should be changed at least every 6 months.

A new filter is available from customer service.

- ❑ Disconnect the water supply to the appliance.



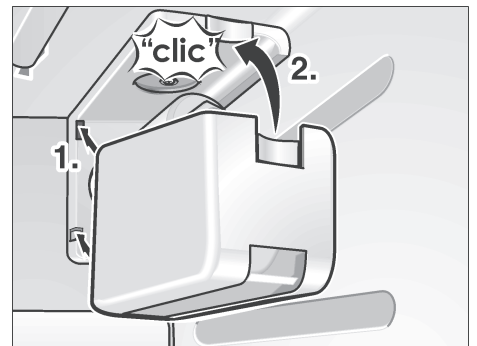
- ❑ Push the button and remove the cover from the water filter compartment.



- ❑ Rotate the filter cartridge by 90° gently in an anti-clockwise direction (1.) and remove the cartridge.

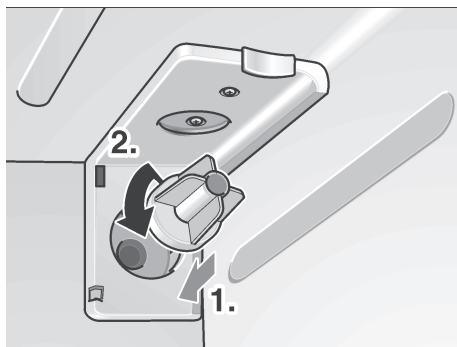
Take a new filter cartridge out of the packaging and remove the protective cap.

- ❑ Insert the new filter cartridge in the holder and rotate the filter cartridge by 90° gently in clockwise direction.



- ❑ Insert the cover of the water filter compartment.

i The appliance might be used without a water filter. If you choose this option replace the water filter by a bypass cap.



Filter – Product Data Sheet



Performance Data Sheet

Models CS-451/CS-452

These systems have been tested according to ANSI/NSF 42 for the reduction of the substances listed below. The concentration of the indicated substances in water entering the system was reduced to a concentration less than or equal to the permissible limit for water leaving the system as specified in ANSI/NSF 42.



System tested and certified by NSF International against ANSI/NSF Standard 42 for the reduction of Chlorine Taste and Odor.

Capacity: 1500 gallons (5,678 liters) depending on local water conditions.

Contaminant Reduction Determined by NSF Testing

Contaminant Reduction	Average Influent	NSF specified Influent challenge concentration	Avg. Product Water	Avg. % Reduction	NSF Reduction Requirements	NSF Test
Chlorine Taste and Odor	2.0	2.0 mg/L \pm 10%	0.28	86	\geq 50%	503821-01

For cold water use only.

Application Guidelines/Water Supply Parameters	
Service flow	0.5 gpm (1.89 lpm)
Water supply	Community or private well
Water pressure	25 - 125 psi (172 - 862 kPa)
Water temperature	40°F - 100°F (4.4°C - 38°C)

It is essential that operational, maintenance and filter replacement requirements be carried out for this product to perform as advertised. Change cartridges every 6 months. Flush new cartridge for 5 minutes. Use replacement cartridges CS-51 or CS-52.

Do not use with water that is microbiologically unsafe or of unknown quality without adequate disinfection before or after the system.

Systems must be installed and operated in accordance with manufacturer's recommended procedures and guidelines.

Warranty: See Warranty Card.

Note that while the testing was performed under standard laboratory conditions, actual performance may vary.

For service and parts contact your local dealer or:



CUNO Incorporated

400 Research Parkway
Meriden, CT 06450, USA
Toll Free: 1-888-218-CUNO
Worldwide: 203-237-5541
Fax: 203-238-8701
www.cuno.com