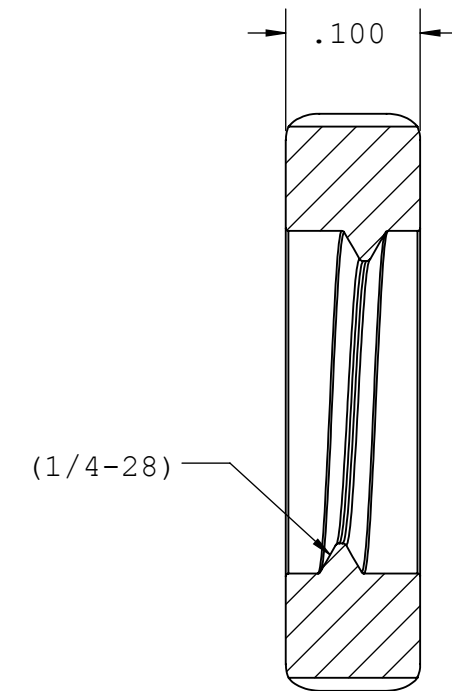
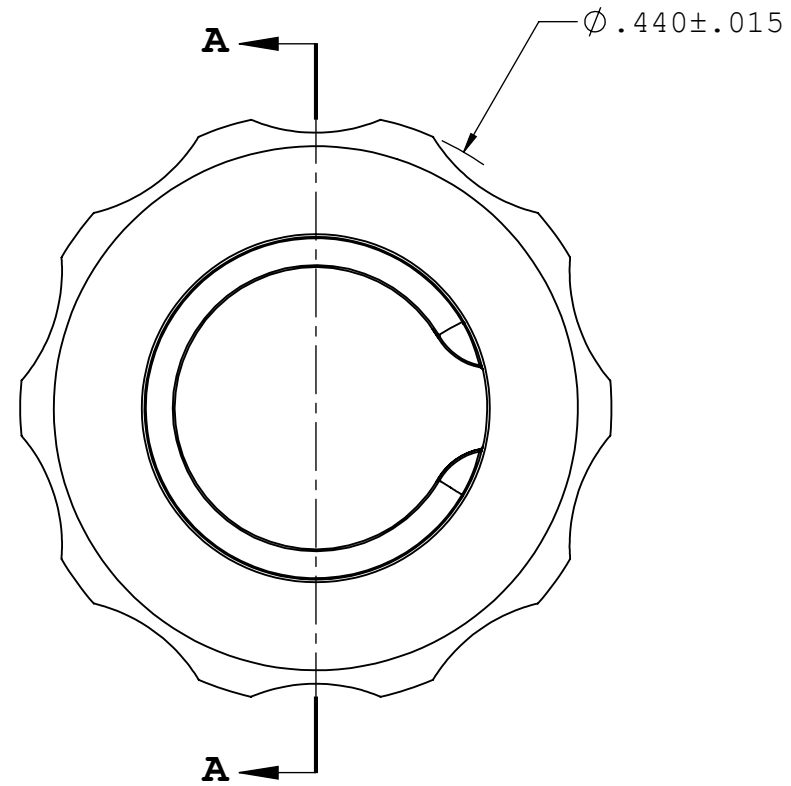


NOTES: 1.FOR ADDITIONAL DETAILS, PLEASE CONTACT VP CUSTOMER SERVICE

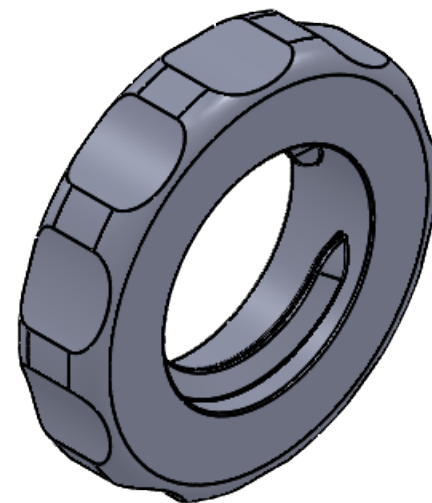
2.DIMENSIONS MARKED  ARE CONTROL DIMENSIONS

3.VERIFY THREAD USING 1/4"-28 PD .2258 GO THREAD GAUGE

REVISIONS			
REV.	DESCRIPTION	DATE	APPROVED
A	INITIAL RELEASE	02-05-98	
B	CO 027 Drafting Update	12-06-05	Rick C.
C	ECO 391	05-16-18	FJL



SECTION A-A



UNLESS OTHERWISE SPECIFIED DIMENSIONS ARE IN INCHES TOLERANCES ARE:		VALUE PLASTICS, INC			
FRACTIONS DECIMAL ANGULAR ± .XX ±.01 ± 1° .XXX ±.005 .XXXX ±.001		PART NUMBER: LNS			
DO NOT SCALE DRAWING		DESCRIPTION: 1/4-28 Panel Mount Lock Nut (For use with FTLB panel mount fittings)			
DRAWN BY: Frank.Lombardi	DATE: 5/16/2018	SIZE: B	SCALE: NTS	VER: 	DWG. NO. 1007523
MANAGER: Rick Cairns		© 2014 VALUE PLASTICS, INC			REV C
				SHEET: 1 OF 1	

FOR REFERENCE ONLY