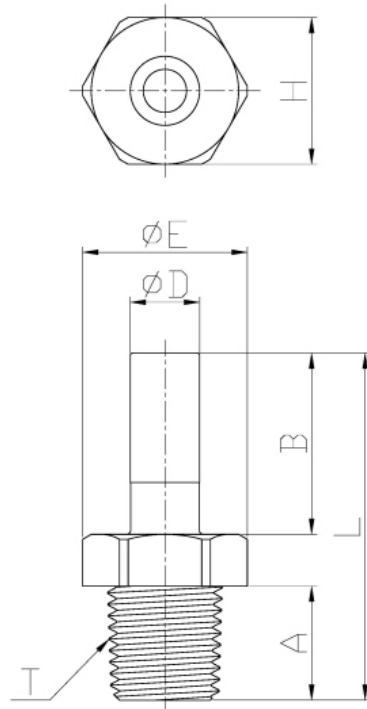


Stem Adapter (BSPP)

Pressure Ratings			
	< 5/16"	3/8"	1/2"
33 °F	290 psi	232 psi	203 psi
68 °F	290 psi	232 psi	203 psi
150 °F	232 psi	203 psi	116 psi

Torque Allowance					
Thread Size	1/8"	1/4"	3/8"	1/2"	3/4"
Max Torque	1.1 ft lbs	1.1 ft lbs	2.2 ft lbs	2.2 ft lbs	2.9 ft lbs



Model	ΦD	T(BSPP.G)	A	B	ΦE	H(Hex)	L	WEIGHT(g)
ASA4M-G1	04	1/8	6.0	18	16.6	15	32.5	2.7
ASA4M-G2	04	1/4	8.5	18	20.5	18	35	4.2
ASA6M-G1	06	1/8	6.0	19.5	16.6	15	34	2.8
ASA6M-G2	06	1/4	8.5	19.5	20.5	18	36.5	4.3
ASA8M-G1	08	1/8	6.0	21	16.6	15	35.5	3
ASA8M-G2	08	1/4	8.5	21	20.5	18	38	4.6
ASA8M-G3	08	3/8	9.0	21	24.2	22	38.5	6.2
ASA10M-G2	10	1/4	8.5	24	20.5	18	41	5.2
ASA10M-G3	10	3/8	9.0	24	24.2	22	41.5	6.8
ASA10M-G4	10	1/2	12.5	24	28.5	26	45	10.7
ASA12M-G3	12	3/8	9.0	28	24.2	22	45.5	7.3
ASA12M-G4	12	1/2	12.5	28	28.5	26	49	11.2