



AquaCera
water filtration technology

PRODUCTS

Ceramics

Ceramic filters have history as a means of filtering water dating back to the early 1800's when reliable drinking water sources were not available in most countries; that history and development from the early filters has allowed progression to today's ceramics. Our advances in the ceramic filtration manufacturing process result in a more effective and efficient means of treating a wide range of waterborne contaminants. Our modern manufacturing practices give our ceramic elements a more controlled and consistent pore structure; the inclusion of silver gives the filter elements bacteriostatic properties which prevents mitosis (grow through) and are self sterilizing.

Using ceramic filters as a means of treating and filtering water is not new, the benefits however remain for many reasons.

- A tried and true method of removing pathogenic bacteria and harmful cysts from treated and untreated waters alike.
- Cleanable, so instead of throwing away the filter when it clogs, you simply clean the ceramic shell to restore the flow rate.
- The tight porosity of the ceramic shell slows the water flow through the filter allowing for sufficient contact time with the core material allowing for better contaminant reduction.
- Ceramic shell protects the core material from premature failure due to bio-fouling (accumulation of microorganisms, algae, etc. on the surface).
- Retains healthy minerals; takes out the bad and leaves in the good.
- Filters can operate under low pressure making it a diverse filtration medium.

Our ceramic range is available with or without a core material, which allows greater flexibility in choosing the right filter based on your water filtration needs.

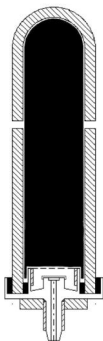
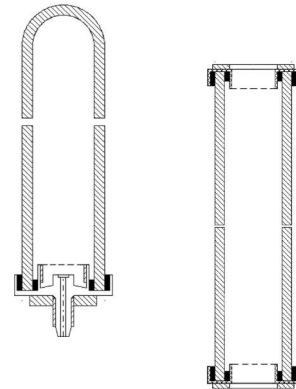
Filter Grades

CeraSyl™

Silver impregnated ceramic DE (diatomaceous earth) micro-filter. Designed to trap all particulate down to 0.5 microns, namely bacteria and cysts, to provide clean, safe drinking water. Excellent as a stand alone filter for removing unwanted sediment and bacteriologic contaminants, or as a microbiological pre-filter in a more comprehensive filter system. For use in both gravity and pressurized systems

- 0.5 Micron Absolute
- 100% Removal of cysts
- 99.9999% Pathogenic bacteria removal
- >99.9% Efficiency at 0.2 micron
- Cleanable for prolonged life
- Silver impregnated to prevent bacteria grow through
- Available in Slimline candle and cartridge format and Imperial candle and cartridge sizes

CeraSyl™ is the basis for all of our ceramic filter candles and cartridges.



CeraPlus™

The CeraPlus™ adds a granular activated, coconut shell based carbon to the core of the ceramic, the addition of which allows for treatment of chlorine, taste and odor. A popular and economical choice for gravity filter systems and other low pressure applications.

- All the features of the CeraSyl™ plus the following:
- Chlorine reduction—>95% Gravity/>50% Pressure
- Organics reduction—>95% Gravity/>50% Pressure
- Available in Slimline candle size only.

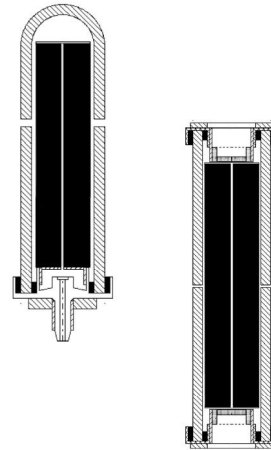
Designed for low pressure filter systems only. The use of granular media under pressure can result in channeling, which reduces the filter cores ability to effectively reduce chemical contaminants.

CeraUltra™

The CeraUltra™ adds a carbon block core to the ceramic for the reduction of chlorine, taste, odor, VOC's, lead, mercury and other heavy metals for pressurized filtration systems.

- All the features of our CeraSyl™ ceramic, plus the following:
- >98% Lead & mercury reduction
- >97% Chlorine reduction
- >95% VOC reduction
- Meets or exceeds NSF Standards 42 & 53
- Available in Slimline candle format and Imperial cartridge sizes

Designed for pressurized filter systems only.



CeraMetix®

CeraMetix® is the most advanced filter available. CeraMetix® adds our AquaMetix® block core for the reduction of aluminum, arsenic, cadmium, chloramines, chlorine, cysts, fluoride, lead, mercury, nickel, radionuclides, silver, tri-halomethanes, VOC's and more.

CeraMetix® GF are for use in gravity filter systems.

- All the features of our CeraSyl™ ceramic, plus the following:
- >99% Chloramine reduction—Reduces the combinations of chloramine, monochloramine, and ammonia—3ppm challenge test
- >99% Chlorine reduction
- >99% Lead reduction
- >99% Herbicides and Pesticides reduction
- >99% Glyphosate reduction
- >98% Pharmaceutical compounds
- >98% VOC's reduction
- >98% Heavy metals reduction
- >85% Fluoride reduction— All types—Fluorosilicic acid/hydrofluorosilicate, sodium fluorosilicate & Sodium fluoride
- Meets or exceeds NSF Standards 42 & 53
- Available in Slimline candle format and Imperial candle and cartridge sizes

Independently tested for reduction claims through Pace Analytical, WQA, and other laboratories.



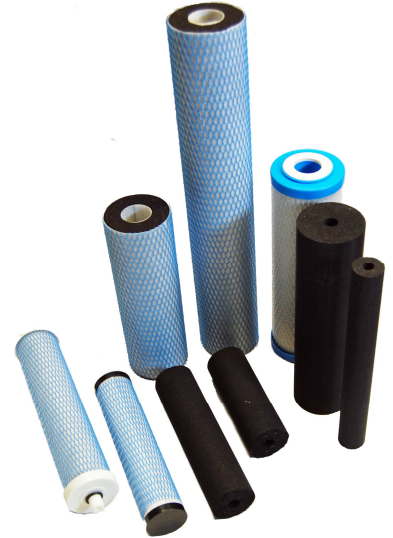
Carbon Filters

AquaMetix®

Designed to provide the highest quality drinking water possible from a single stage block filter. AquaMetix® will reduce a wide variety of drinking water contaminants of both aesthetic and health concern. The dense pore structure and vast surface area is ideally suited to improving taste and odor, color, chemicals, MTBE, and fluoride.

- >98.5% Chloramine reduction—3ppm challenge test
Reduces the chloramine, monochloramine, and ammonia
- >99% Chlorine reduction
- >98.2% Lead reduction
- >99% Herbicides and Pesticides reduction
- >98% VOC's reduction
- >98% Glyphosate reduction
- >98% Pharmaceutical compounds
- >98% Heavy metals reduction
- >90% Nitrates reduction
- >85% Fluoride reduction—All types—Fluorosilicic acid/hydrofluorosilicate, sodium fluorosilicate & Sodium fluoride
- Available in various sizes

Independently tested for reduction claims through Pace Analytical, WQA, and other laboratories.



Gravity Block High Flow Filters

Chemix™ GB

Chemix™ gravity block is designed to provide high quality drinking water for pour through and gravity type applications for municipally treated water supplies. This molded block technology is specifically designed to reduce particulate, Volatile Organic Compounds, Lead and Mercury without mains water pressure without priming or pre-wetting procedures.

- No priming, or pre-wetting of the filter required
- >95% Lead and Mercury reduction
- >95% Volatile Organic Compounds reduction
- >95% Chlorine reduction

Independently tested for the above



AquaMetix® GB

AquaMetix® gravity block is designed to provide the highest quality drinking water possible for pour through and gravity type applications for municipally treated water supplies. AquaMetix® GB will reduce a wide variety of drinking water contaminants of both aesthetic and health concern without mains water pressure and without priming or pre-wetting procedures.

- No priming, or pre-wetting of the filter required
- >95% Chloramine reduction—3ppm challenge
Reduces both the chloramine, monochloramine, and ammonia
- >95% Lead reduction
- >99% Herbicides and Pesticides reduction
- >98% VOC's reduction
- >98% Heavy metals reduction
- >85% Fluoride reduction—All types—Fluorosilicic acid/hydrofluorosilicate, sodium fluorosilicate & Sodium fluoride

Independently tested for the above



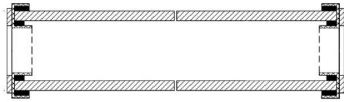
Filter Sizes and Types

Slimline

Slimline filter elements all feature a 2" diameter, and are available as either a 'candle' or 'cartridge'. Slimline filters are available in various grades and sizes.

Candles—Slimline

Slimline filter candles have a domed end and are available in the following grades: CeraSyl™, CeraPlus™, CeraUltra™, CeraMetix®, and AquaMetix®. Standard lengths are 5", 7", 9" and 10". Not all filters are designed to operate in gravity and/or pressure systems and not all filters are available in all lengths.



Cartridges—Slimline

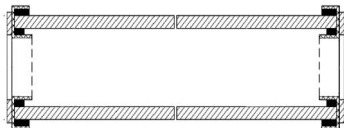
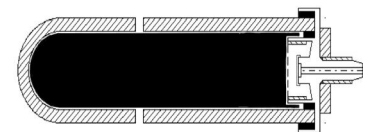
Slimline cartridges measure 9 3/4" in length. Slimline cartridges have a 2" diameter and are available in CeraSyl™ grade. All Slimline cartridges are designed to fit Industry Standard filter housings. Cartridges are open on both ends, also referred to as an OBE.

Imperial

Imperial filter elements all feature a 2.75" diameter, and are available as either a 'candle' or a 'cartridge'. Imperial filters are available in various grades and sizes. Imperial filters offer higher flow rates and longer life over the Slimline elements.

Candles—Imperial

Imperial candles have a domed end and are available in the following grades: CeraPlus™, CeraUltra™, CeraMetix®, and AquaMetix®. Standard lengths are 7", 9" and 10". Not all filters are designed to operate in gravity and/or pressure systems and not all filters are available in all lengths.



Cartridges—Imperial

Imperial cartridges measure 9 3/4" in length. Imperial cartridges are available in the following grades: CeraSyl™, CeraUltra™, CeraMetix®, and AquaMetix®. All Imperial cartridges are designed to fit Industry Standard filter housings. Imperial cartridges offer higher flow rates and increased capacity over Slimline cartridges.

CounterTop Systems

HCP

The HCP is a freestanding filter system for countertop use, which is readily attached to an existing faucet via a diverter valve. The HCP allows filtered or unfiltered water to be drawn from the existing faucet. The housing is molded from acetyl and polyester materials and needs no permanent modifications to the plumbing. This system is designed for cold water use only.

Available filters for this system are: CeraSyl™, CeraUltra™, CeraMetix® and AquaMetix®. This system accepts 10" Slimline candles only.



HCS

The HCS is a freestanding filter system for countertop use, which is readily attached to an existing faucet via a diverter valve. The HCS allows filtered or unfiltered water to be drawn from the existing faucet. The housing is manufactured from stainless steel and needs no permanent modifications to the plumbing. This system is designed for cold water use only.

This system requires one 10" AquaCera® ceramic filter element with the short mount.

Available filters are the CeraSyl™, CeraUltra™, CeraMetix® and AquaMetix®. This system accepts 10" Slimline candles only.



Teros™ CounterTop Purifier

The Teros™ CounterTop Ultra-Filtration system combines our Hollow Fiber (Gen.2) membranes made of PES, and our AquaMetix® block filter element to provide a comprehensive filtration system in a countertop system offering >0.5 gallon per minute flow rates. The Teros™ is readily attached to an existing faucet via a diverter valve, which allows filtered or unfiltered water to be drawn from the existing faucet. Ergonomically designed for easy installation.

- 99.9999999% Cryptosporidium removal
- 99.9999% E.Coli/Bacteria removal
- 99.999% Virus removal (MS2 bacteriophage test)
- >99% Chloramine reduction
- >99% Chlorine reduction
- >99% Lead reduction
- >99% Herbicides and Pesticides reduction
- >98% VOC's reduction
- >98% Heavy metals reduction
- >92% Nitrates reduction
- >85% Fluoride reduction
- Capacities: UF Membrane 18-24 months

AquaMetix® candle 3500 gallons/13250 liters—Chlorine
1750 gallons/6600 liters—Chloramines
1150 gallons/4350 liters—Lead



Under-Counter Systems

HIP

The HIP is an in-line pressure filter housing molded from talc-filled ABS and is supplied with the mounting bracket & screws. The inlet & outlet are 3/8" push-fit connectors for easy installation. Also available with a DIY installation kit which includes most parts needed for installation, including a faucet. This system is designed for cold water use only.

Available filters for this system are: CeraSyl™, CeraUltra™, CeraMetix® and AquaMetix®. This system accepts 10" Slimline candles only.



HIS

The HIS is an in-line pressure filter housing manufactured from polished 304 grade stainless steel and is supplied with a mounting bracket & screws. The inlet & outlet are 3/8" push-fit connectors for easy installation. Also available with a DIY installation kit which includes most parts needed for installation, including a faucet. This system is designed for cold water use only.

Available filters for this system are: CeraSyl™, CeraUltra™, CeraMetix® and AquaMetix®. This system accepts 10" Slimline candles only.



EcoFast® EF200

The EcoFast® is an eco-friendly, compact in-line filter system. The housing allows for easy removal of the filter element for maintenance by utilizing a built-in automatic water shut off valve. The unique design of the housing means less waste when replacing the filter, as only the element is discarded. This system uses specially designed filters that will only fit in this system. Also available with a DIY installation kit which includes most parts needed for installation, including a faucet. This system is designed for cold water use only.

Available filters are the MultiMedia and AquaMetix®.



EcoFast® Twin EF200

The EcoFast® Twin allows you to make a more comprehensive filter system.

Also available with a DIY installation kit which includes most parts needed for installation, including a faucet.

The EF Twin comes with the MultiMedia and AquaMetix® filters.



Under-Counter Systems

EcoFast® EF300 XL and XL Twin

The EcoFast® EF300 XL systems offer high flow rates and can be installed as a DirectConnect™ to a main cold water line under a sink.

- NSF Certified components
- Quarter turn release mechanism shuts off water supply for easy maintenance
- Filter housing is reusable and filters are easy and economical to replace
- Low waste—only the filter cartridge inside is replaced
- High capacity/High Flow filters, all with low pressure drop
- Direct Connect™ installation - connect directly to kitchen/bathroom faucet

Filters available:

CBC-XL - Chlorine, Taste, and Odor - >97% 8000 gallons

AMB-XL - Chloramine, Chlorine, Lead, VOC's, Heavy Metals, and Fluoride

>99% Lead reduction - 2900 gallons

>99% Chloramine reduction - 4200 gallons



EcoFast® EF500 XXL

The EcoFast® EF500 XXL system offers high flow rates and can be installed as a DirectConnect™ to a main cold water line under a sink.

- NSF Certified components
- Quarter turn release mechanism shuts off water supply for easy maintenance
- Filter housing is reusable and filters are easy and economical to replace
- Low waste—only the filter cartridge inside is replaced
- High capacity/High Flow filters, all with low pressure drop
- Direct Connect™ installation - connect directly to kitchen/bathroom faucet
- Suitable for Vending and Food Service Applications

Filters available:

CBC-XXL - Chlorine, Taste, and Odor - >97% 16000 gallons

AMB-XXL - Chloramine, Chlorine, Lead, VOC's, Heavy Metals, and Fluoride

>99% Lead reduction - 5400 gallons

>99% Chloramine reduction - 8000 gallons



NilusOne™

The NilusOne™ is an in-line filter system that uses our Imperial size filter cartridges allowing for higher flow rates and longer life. Includes a DIY installation kit which includes most parts needed for installation, including a faucet, tubing, mounting bracket & screws, and fittings.

- NSF Certified housing
- High flow filters—up to 1 gallon per minute
- DIY Kit included

Available filters are the Imperial CeraSyl™ OBE, Imperial CeraUltra™ OBE, Imperial CeraMetix® OBE, and AquaMetix® OBE



Under-Counter Systems

Teros™ 2 Purifier

The Teros™ 2 Purifier combines our latest Gen2 hollow fiber membrane technology for exceptional bacteria, cyst and virus reduction and our AquaMetix® filter for unequaled chemical reductions. The Teros™ 2 is a twin housing system capable of delivering 0.5 gallon per minute flow rates without the need of a storage tank.

- 99.9999999% Cryptosporidium removal
- 99.99999% E.Coli/Bacteria removal
- 99.9999% Virus removal (MS2 bacteriophage test)
- >99% Chloramine reduction
- >99% Chlorine reduction
- >99% Lead reduction
- >99% Herbicides and Pesticides reduction
- >98% VOC's reduction
- >98% Heavy metals reduction
- >92% Nitrates reduction
- >85% Fluoride reduction
- Capacities: UF Membrane 18-24 months

AquaMetix® candle 3500 gallons/13250 liters—Chlorine
1750 gallons/6600 liters—Chloramines
1150 gallons/4350 liters—Lead



Teros™ 3 Purifier

The Teros™ 3 Purifier includes our 5 stage synthetic fiber block filter to the Teros™ 3 as a pre-filter to provide a high flow filtration of sediment, chlorine, cyst, lead and scale prevention. The Teros™ 3 is a triple housing system capable of delivering 0.5 gallon per minute flow rates without the need of a storage tank.

- 99.9999999% Cryptosporidium removal
- 99.99999% E.Coli/Bacteria removal
- 99.9999% Virus removal (MS2 bacteriophage test)
- >99% Chloramine reduction
- >99% Chlorine reduction
- >99% Lead reduction
- >99% Herbicides and Pesticides reduction
- >98% VOC's reduction
- >98% Heavy metals reduction
- >92% Nitrates reduction
- >85% Fluoride reduction
- Capacities: UF Membrane 18-24 months

AquaMetix® candle 3500 gallons/13250 liters—Chlorine
1750 gallons/6600 liters—Chloramines
1150 gallons/4350 liters—Lead
MultiMedia—1000 gallons/3800 liters



Gravity Systems

Gravity filter systems were first designed to be used in an emergency situation where a reliable water source was not available. Today, while still used for emergency and preparedness, gravity filter systems are used for everyday water filtration, either in your home or anywhere you may travel, offering safe, clean filtered water for individuals, families and communities around the world.



Traveler™ XL

The Traveler™ XL is a 12 liter (3.25 gallon) gravity filter system that accommodates two filter candles. Manufactured from 304 grade stainless steel, it is highly portable and lightweight. The Traveler™ XL is designed for daily use for those wanting a smaller unit than the Pioneer system. This system is designed for cold water use only.

Available filters are the CeraPlus™, CeraMetix®-GF, and the QuickDrip™ filters.

Pioneer SS™

The Pioneer SS™ is manufactured from 304 grade stainless steel and accommodates up to 4 filter candles. The Pioneer SS™ is very easy to assemble, requiring no tools to set up. The upper chamber neatly nests into the lower chamber making for easy transport of the unit. The Pioneer SS™ is a 4.75 gallon/18 liter unit, each chamber holds 2.3 gallons. This system is designed for cold water use only.

Available filters are the CeraPlus™, CeraMetix®-GF, and the QuickDrip™ filters.



LP5™

The LP5™ is manufactured from FDA approved, high density polyethylene which makes the unit very durable and extremely lightweight. The LP5™ will accommodate up to 5 Slimline or Imperial filter candles, allowing this system to provide safe, clean water for large families or emergency relief. The LP5™ is a 7 gallon/26 liter unit, each chamber holds 3.5 gallons. This system is designed for cold water use only.

Available filters are the CeraPlus™, CeraMetix®-GF, and the QuickDrip™ filters.

Whole House Filters

We offer whole house filter systems designed to remove a variety of contaminants. We only use NSF certified components to build and assemble our tanks and systems, this includes the medias inside.

We use only the highest quality tanks, heads and valves on our systems to ensure each system performs to specifications.



CF Series

CF Series are non-backwash filter tanks that utilize various medias for chemical contaminant reductions.

- Carbon Systems—Chlorine, Taste & Odor reduction along with VOC's & THM's
- Fluoride & Heavy Metals
- Arsenic Reduction
- Acid Neutralizers

AquaRinse™ Series

AquaRinse™ are backwashable filter systems that utilize various medias for chemical contaminant reductions.

- Carbon Systems—Chlorine, Taste & Odor reduction along with VOC's & THM's
- Fluoride & Heavy Metals
- Arsenic Reduction
- Acid Neutralizers
- Iron & Manganese Removal
- Sulfur Removal
- Mixed Bed—Custom Applications

NoScale™ Series

NoScale™ Series are non-backwash salt-free scale prevention systems

- FSC NoScale™ Salt-Free Conditioners
- RS-CITY NoScale™ Salt-Free Conditioner with CF Series Carbon Tank

AquaSoft™ Series

AquaSoft™ Water Softeners feature traditional ion exchange

- SeriesOne—IMDT (Intelligent Meter Demand Technology) Fully Automatic—10 Year Warranty
- Diamond—IMDT (Intelligent Meter Demand Technology) TPC (Total Programming Control) and fine mesh resin—15 Year Warranty



AquaCera

water filtration technology



www.aquacera.com



Ceramic Filters Company, Inc
11617 Wampers Lake Rd
Brooklyn, MI 49230 USA
Toll Free 888 236 8586
Tel 517 592 1946 Fax 517 592 8238
info@aquacera.com