

1. CONNECTION TABLE

NOTES:

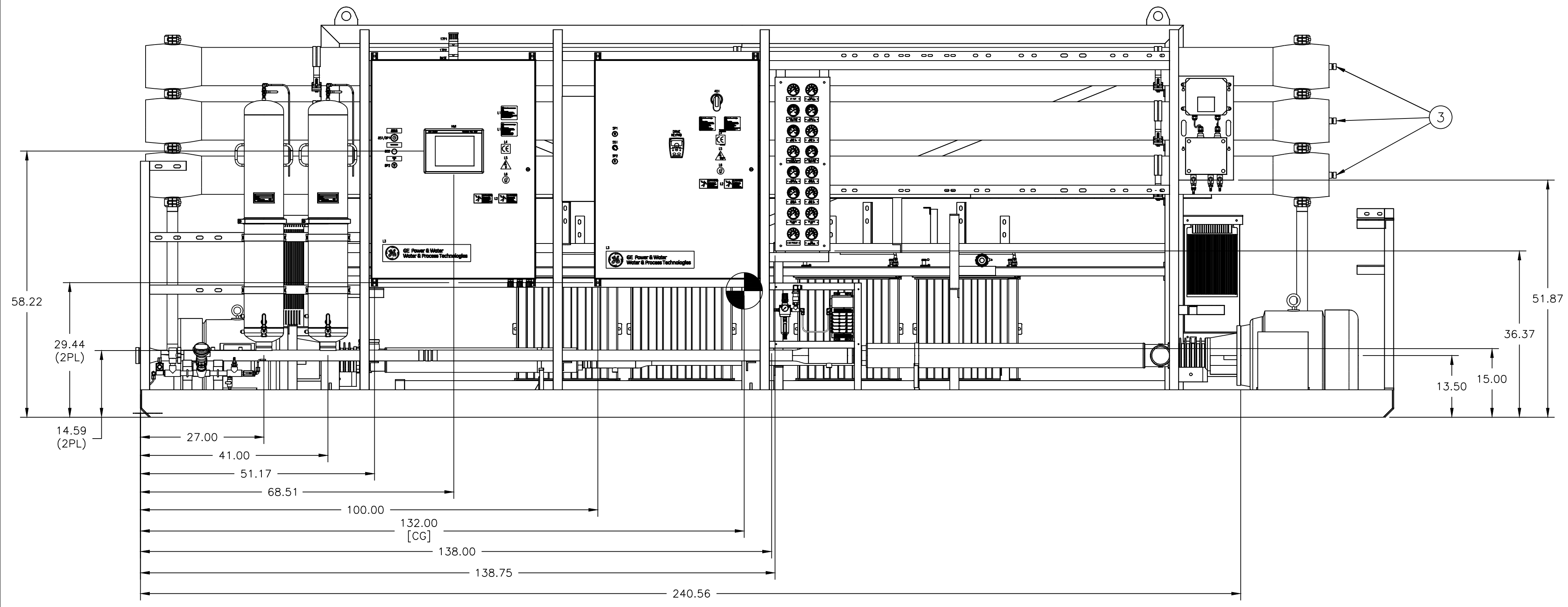
ITEM	DESCRIPTION	MATERIAL	TYPE	SIZE
(A)	FEED	PVC	150# FLANGE	3.00
(B)	CIP/FLUSH INLET	PVC	150# FLANGE	3.00
(C)	PASS1 PERMEATE CIP	PVC	150# FLANGE	3.00
(D)	PASS2 PERMEATE CIP/OFF SPEC	PVC	150# FLANGE	2.00
(E)	EDI PRODUCT	PVC	150# FLANGE	2.00
(F)	EDI RINSE/CIP	PVC	150# FLANGE	2.00
(G)	EDI CONCENTRATE	PVC	150# FLANGE	0.50
(H)	PASS1 CONCENTRATE	PVC	150# FLANGE	0.50
(J)	PASS1 CONCENTRATE CIP	PVC	150# FLANGE	2.00
(K)	PASS2 CONCENTRATE CIP	PVC	150# FLANGE	2.00
(L)	EDI ELECTRODE OUTLET	PVC	150# FLANGE	0.50
(M)	EDI CONCENTRATE/ELECTRODE CIP	PVC	150# FLANGE	0.50
(N)	CUSTOMER DRAIN-1 (SLIP STREAM)	PE	TUBING	0.25
(P)	CUSTOMER DRAIN-2 (SLIP STREAM)	PE	TUBING	0.25

- 2. SHIPPING WEIGHT - 12200 LB/[5535 Kg].
- 3. OPERATING WEIGHT - 14900 LB/[6755 Kg].
- 4. PLUMBING RUN\EQUIPMENT TABLE:

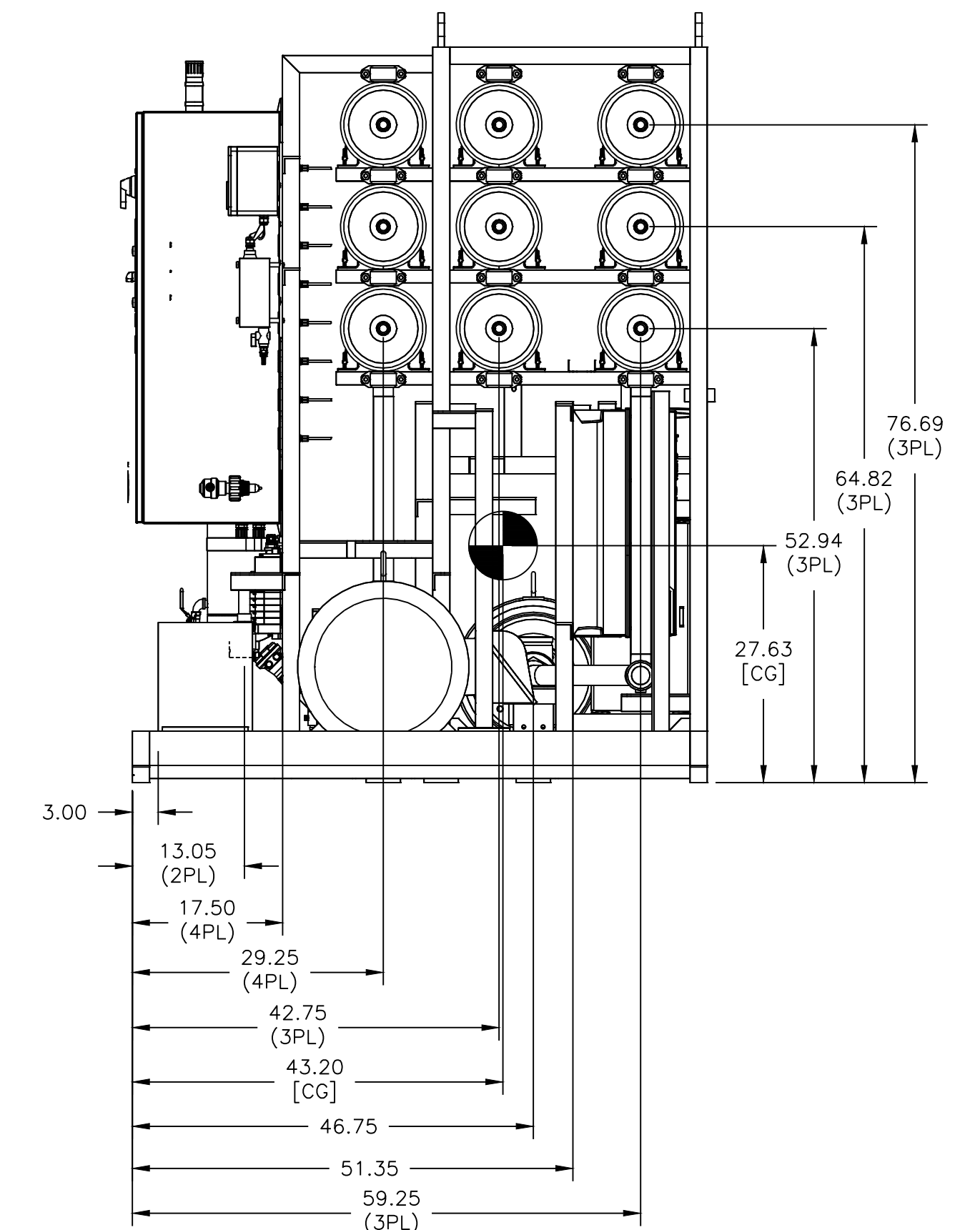
FIND NO.	PART NUMBER	QTY.	DESCRIPTION	U/M
1	1125045	1	PUMP,TF,SS24009KZE-50,40HP,TEFC	EA
2	1125047	1	PUMP,TF,SS24013KZE-50,50HP,TEFC	EA
3	211111RO-MA-019	9	HSG,SH-6/B23,FRP,32VIC,4P,ROPV,450,V,COD	EA
4	3055447	1	VFD,GE,AF650,52FLA,N4X,380/480VAC	EA
5	3055449	1	VFD,GE,AF650,80 FLA,N4X,380/480VAC	EA
6	3057694	4	EDI,E-CELL STACK,E-CELL-3X	EA
7	3126569	1	ASSY,AIR,SOLENOID,SMC,PROCELL-NAM ES	EA
8	3126571	1	PANEL-ASSY,GAUGE,PROCELL,NAM	EA
9	3126639	1	PLMB,FEED,PVC,3.00,PROCELL100,NAM	EA
10	3126724	1	PLMB,PERM-HEAD,P1,PVC,2.0,PROCELL100,N	EA
11	3126725	1	PLMB,PERM,P1,PVC,2.00,PROCELL100,NAM	EA
12	3126728	1	PLMB,CONC-HP,P1,SS,1.50,PROCELL100,NAM	EA
13	3126730	1	PLMB,CONC-LP,P1,PVC,1.50,PROCELL100,NAM	EA
14	3126731	1	SPOOL,IB,P1,SS,2.00,PROCELL100,NAM	EA
15	3126732	1	PLMB,IB,CIP,P1,SS,2.00,PROCELL100,NAM	EA
16	3126736	1	PLMB,PERM-HEAD,P2,PVC,2.0,PROCELL100,NAM	EA
17	3126737	1	PLMB,PERM,P2,PVC,2.00,PROCELL100,NAM	EA
18	3126738	1	PLMB,PERM,CIP,P2,PVC,2.0,PROCELL100,NAM	EA
19	3126739	1	PLMB,CONC-HP,P2,SS,1.00,PROCELL100,NAM	EA
20	3126742	1	PLMB,EDI,FEED,PVC,2.00,PROCELL100,NAM	EA
21	3126743	1	PLMB,EDI,CONC-IN,PVC,0.75,PROCELL100,NAM	EA
22	3126744	1	PLMB,EDI,CONC-OUT,PVC,0.5,PROCELL100,NAM	EA
23	3126745	1	PLMB,EDI,ELEC-OUT,PVC,0.5,PROCELL100,NAM	EA
24	3126746	1	PLMB,IB,CIP,P2,SS,2.00,PROCELL100,NAM	EA
25	3126748	1	PLMB1,EDI,PRODUCT,PVC,1.5,PROCELL100,NAM	EA
26	3146660	1	ANLZR-CHLOR,PH,100-240VAC,4-20,2RELAY,GF	EA
27	501817C-EA-17	1	ELEC,TRANSFORMER,480/380-220VAC	EA
28	501817C-EE-01	1	ENCL-ASSY,MAIN CONTROL PANEL	EA
29	501817C-EE-02	1	ENCL-ASSY,380/480VAC,POWER SUPPLY PANEL	EA
30	501817C-PP-01	1	PLMB,PMP-SUCT,P1,PVC,3.0,PROCELL100,NA	EA
31	501817C-PP-02	1	PLMB,PMP-OUT,P1,SS,2.00,PROCELL100,NAM	EA
32	501817C-PP-03	1	PLMB,PMP-IN,P2,PVC,2.00,PROCELL100,NAM	EA
33	501817C-PP-04	1	PLMB,PMP-OUT,P2,SS,2.00,PROCELL100,NAM	EA
34	501817C-PP-05	1	PLMB,CONC-LP,P2,PVC,1.00,PROCELL100,NAM	EA
35	501817C-PP-06	1	SLIP STREAM-1,PH,PROCELL50,NAM	EA
36	501817C-PP-07	1	SLIP STREAM-2,PH,PROCELL50,NAM	EA
37	501817C-PP-08	1	PLMB2,EDI,PROD,PVC,1.5,PROCELL100,NAM	EA
38	501817C-SA-01	1	ASSY,SKID&FRAME,CS,PROCELL100,NAM	EA

- 5. ALL PIPING & EQUIPMENT SHOWN TO BE FULLY SUPPORTED BY GE W&PT PRODUCTION.
- 6. ALL INTERCONNECTING PIPING SHALL BE FULLY & INDEPENDENTLY SUPPORTED BY OTHERS.
- 7. ALL DIMENSIONS IN INCHES.
- 8. REFERENCE - PIPING AND INSTRUMENTATION DIAGRAM: 502982-AP-01.
- 9. PLUGGED WITH 1156481.
- 10. DRAWING TYPICAL FOR TRAIN 1,2,3&4 - ONLY ONE TRAIN SUPPLIED FOR THIS PROJECT, THE OTHERS ARE USED FROM INVENTORY.

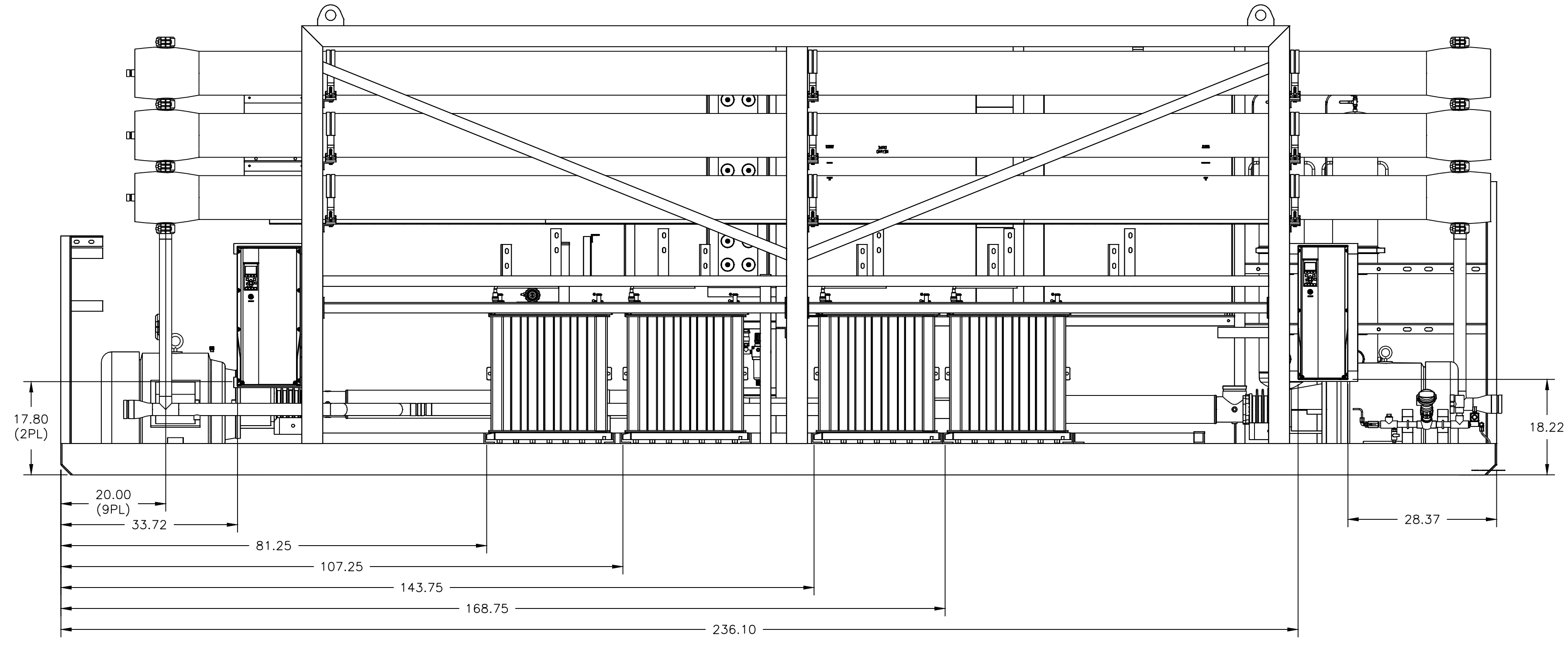
REV	DESCRIPTION	ECO	DWN	APVD	DATE	CHKD	TOLERANCES UNLESS NOTED	DRAWN BY	DATE	CLIENT/JOB	TITLE	SIZE	DRAWING NO.	REV			
A	INITIAL RELEASE	-	-	-	-	-	DECIMALS ± 0.5 .XX ± 0.50 .XXX ± 1/2"	DJS	29NOV16	GE GPS - MSU - TANDIL ARGENTINA PROJECT NO.: 20526-1094237	GA,ASSY,PROCELL,NAM,100DP, 50HZ,380V	D	502982E-PG-01	A			
							DIMENSIONS IN INCHES DO NOT SCALE	CHECKED BY DLT	DATE 02DEC16								
							THIRD ANGLE	APPROVED BY SA	DATE 02DEC16								
<p>GLOBAL HEADQUARTERS : TREVOSE, PA, USA +1-215-355-3300 WWW.GEWATER.COM</p> <p>THIS DRAWING, THE DESIGN AND THE PATENTS IT COVERS, IS THE PROPERTY OF GENERAL ELECTRIC COMPANY AND ITS AFFILIATES AND THE INFORMATION CONTAINED HEREIN IS PROPRIETARY INFORMATION WHICH IS NOT TO BE DISCLOSED TO ANYONE WITHOUT PRIOR WRITTEN CONSENT OF SAID COMPANY. THIS DRAWING IS TO BE USED EXCLUSIVELY FOR THE PURPOSES EXPRESSLY AUTHORIZED BY GENERAL ELECTRIC COMPANY AND ITS AFFILIATES THROUGH ITS OFFICERS AND QUALIFIED REPRESENTATIVES AND FOR NO OTHER PURPOSE. NEITHER THIS DRAWING, NOR ANY PORTION THEREOF, SHALL BE REPRODUCED WITHOUT THE PRIOR WRITTEN CONSENT OF SAID COMPANY, AND ANY SUCH REPRODUCTION SHALL BEAT THIS NOTICE.</p>										FILE	AUTOCAD	MATERIAL	SEE BOM	SCALE	1:16	SHEET	1 OF 4



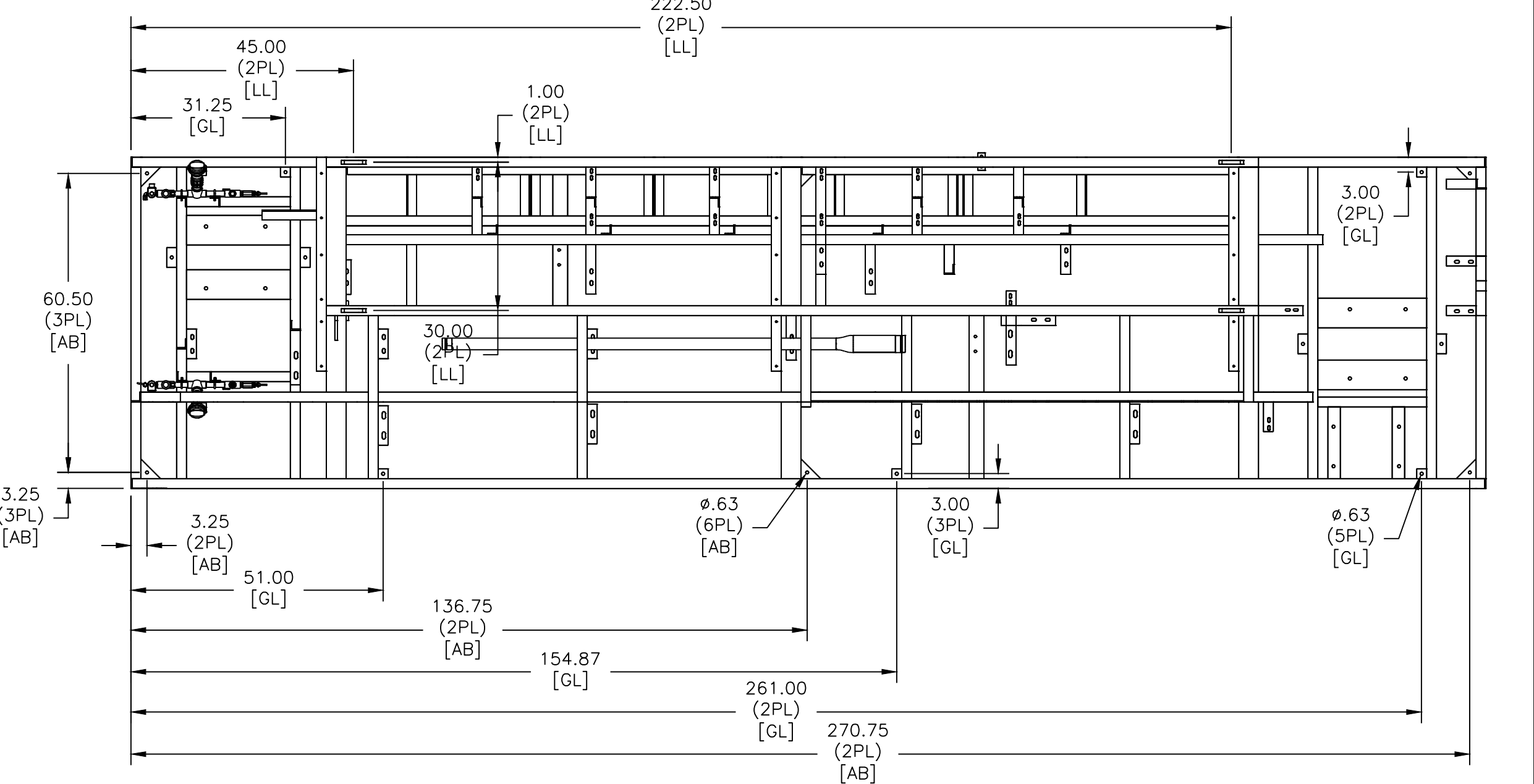
FRONT VIEW



RIGHT SIDE VIEW



BACK VIEW



ANCHOR BOLT(AB),LIFTING LUG(LL),
GROUND LUG(GL)LOCATION
SCALE 1:24

REV	DESCRIPTION	ECO	DWN	APVD	DATE	CHKD	TOLERANCES UNLESS NOTED DECIMALS .XX ± 0.50 XXX ± 1/2"	ANGLES ± 0.5 FRAC ± 1/2"	DIMENSIONS IN INCHES DO NOT SCALE	THIRD ANGLE	DRAWN BY DJS	DATE 29NOV16	CHECKED BY DLT	DATE 02DEC16	APPROVED BY SA	DATE 02DEC16	CLIENT/JOB GE GPS - MSU - TANDIL ARGENTINA PROJECT NO.: 20526-1094237	TITLE GA,ASSY,PROCELL,NAM,100DP, 50HZ,380V	FILE AUTOCAD	MATERIAL SEE BOM	SIZE D	DRAWING NO. 502982E-PG-01	REV A	
A	INITIAL RELEASE																					502982	1:16	SHEET 2 OF 4

GE
Water & Process Technologies
GLOBAL HEADQUARTERS : TREVOSE, PA USA +1-215-355-3300 WWW.GEWATER.COM

THIS DRAWING, THE DESIGN AND THE PATENTS IT COVERS, IS THE PROPERTY OF GENERAL ELECTRIC COMPANY AND ITS AFFILIATES AND THE INFORMATION CONTAINED HEREIN IS PROPRIETARY INFORMATION WHICH IS NOT TO BE DISCLOSED TO ANYONE WITHOUT PRIOR WRITTEN CONSENT OF SAID COMPANY. THIS DRAWING IS TO BE USED EXCLUSIVELY FOR THE PURPOSES EXPRESSLY AUTHORIZED BY GENERAL ELECTRIC COMPANY AND ITS AFFILIATES THROUGH ITS OFFICERS AND QUALIFIED REPRESENTATIVES AND FOR NO OTHER PURPOSE. NEITHER THIS DRAWING, NOR ANY PORTION THEREOF, SHALL BE REPRODUCED WITHOUT THE PRIOR WRITTEN CONSENT OF SAID COMPANY, AND ANY SUCH REPRODUCTION SHALL BEAR THIS NOTICE.

D

C

B

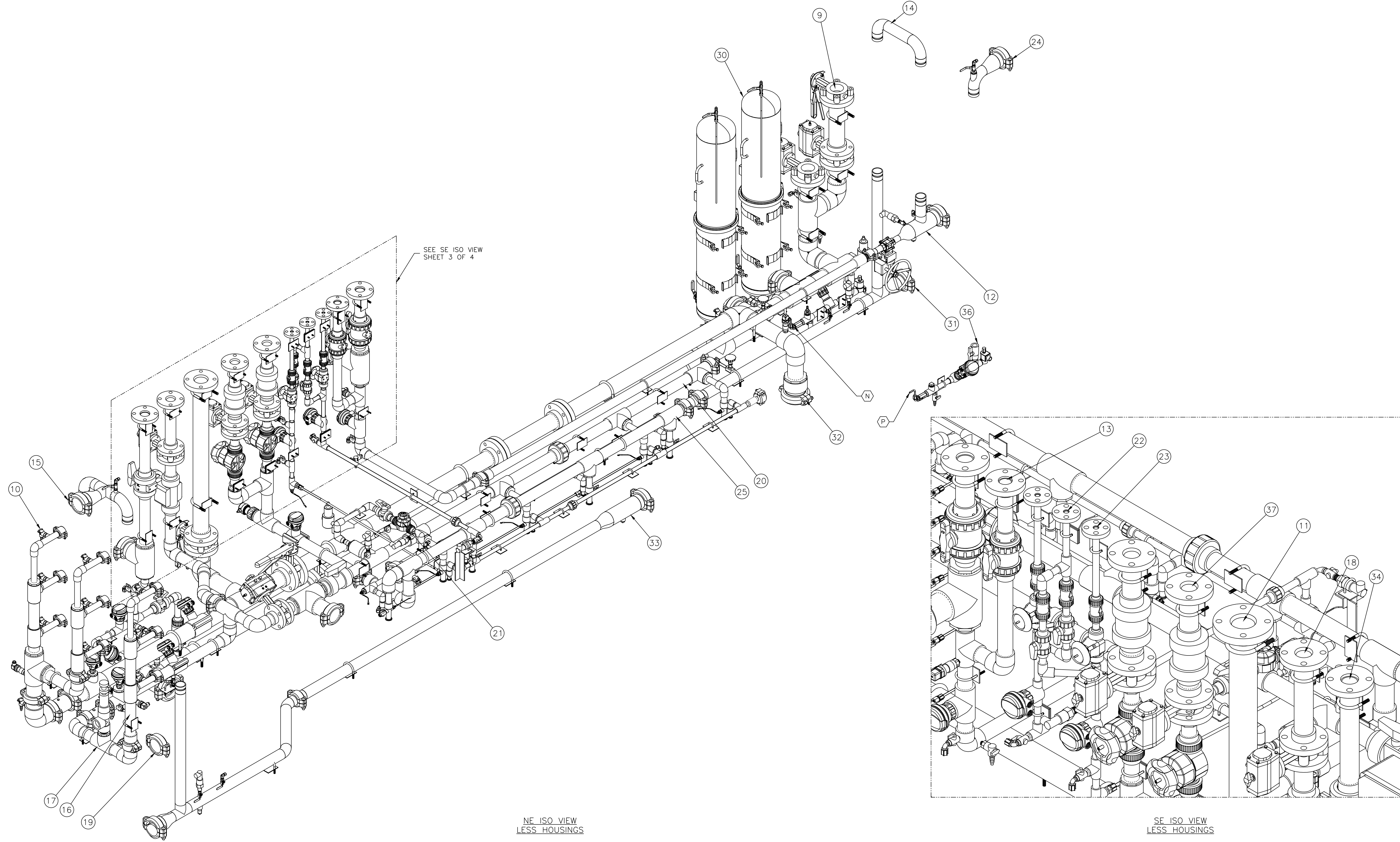
A

D

C

B

A



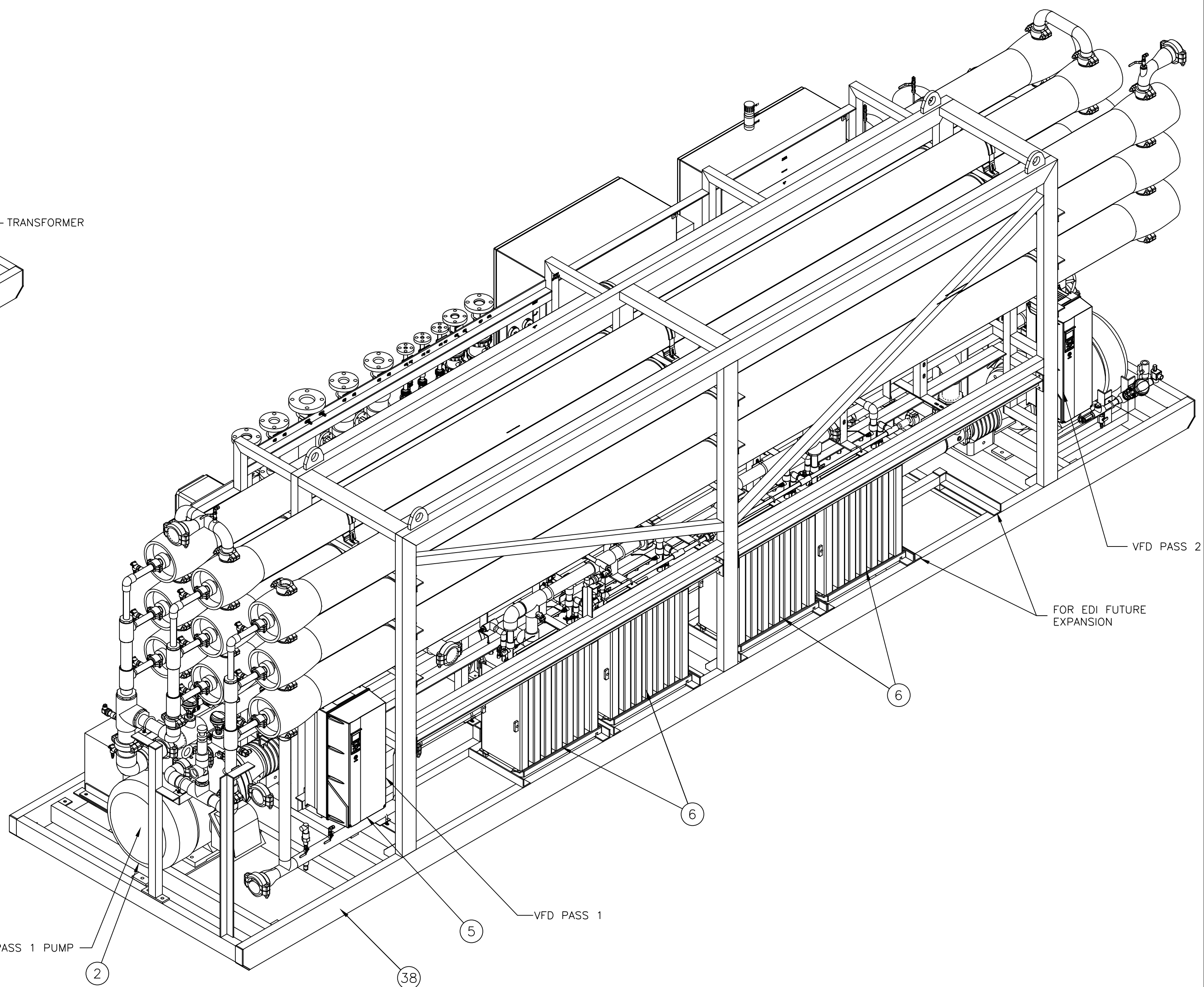
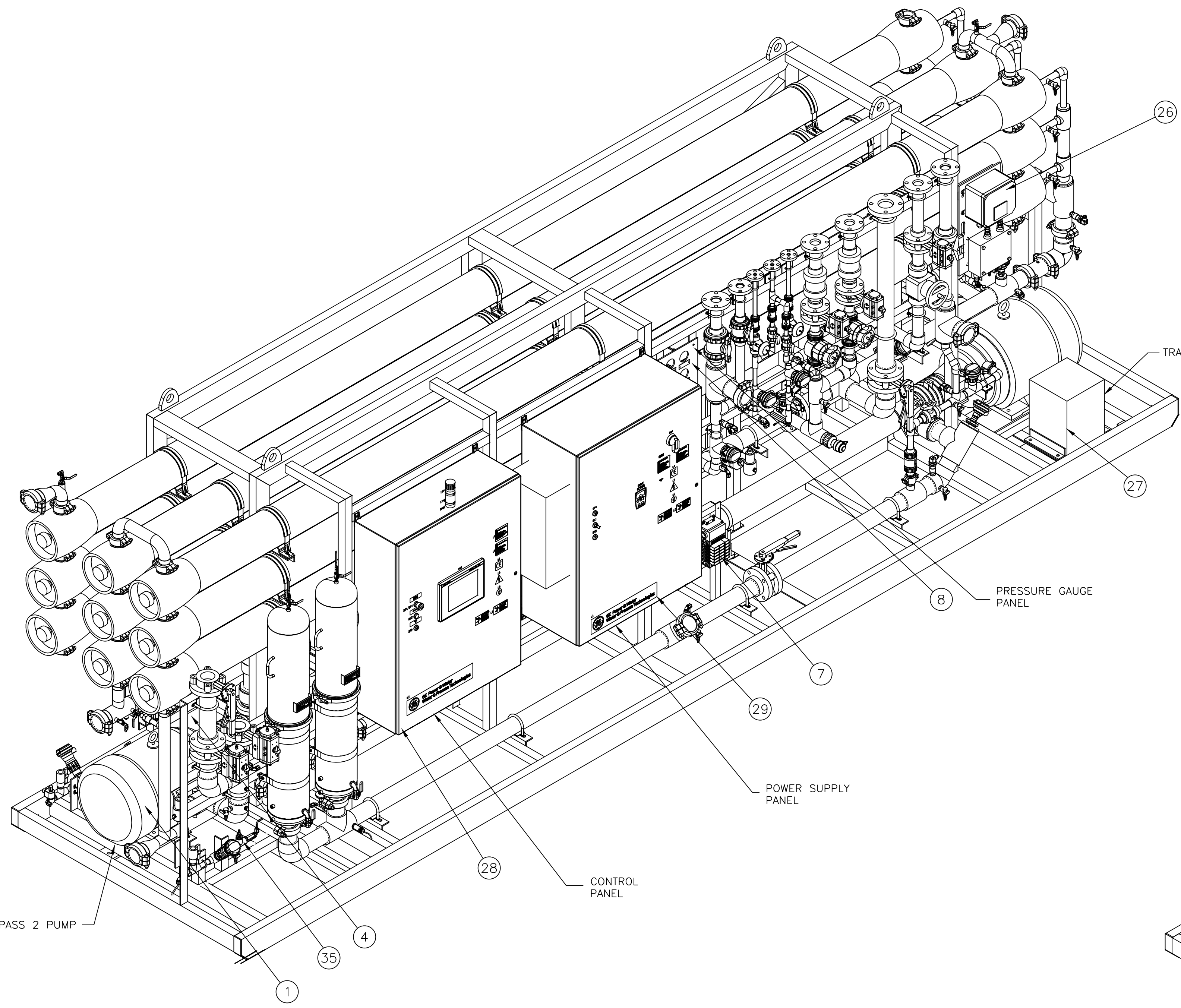
NE ISO VIEW
LESS HOUSINGS

SE ISO VIEW
LESS HOUSINGS

REV	DESCRIPTION	ECO	DWN	APVD	DATE	CHKD	TOLERANCES UNLESS NOTED DECIMALS .XX ± 0.50 .XXX ± 1/2"	ANGLES ± 0.5 FRAC. ± 1/2"	DIMENSIONS IN INCHES DO NOT SCALE	THIRD ANGLE	DRAWN BY DJS	DATE 29NOV16	CHECKED BY DLT	DATE 02DEC16	APPROVED BY SA	DATE 02DEC16	CLIENT/JOB GE GPS - MSU - TANDIL ARGENTINA PROJECT NO.: 20526-1094237	TITLE GA,ASSY,PROECELL,NAM,100DP, 50HZ,380V	FILE AUTOCAD	MATERIAL SEE BOM	SIZE D	DRAWING NO. 502982E-PG-01	REV A	
A	INITIAL RELEASE	-	-	-	-	-																		

8 7 6 5 4 3 2 1

D
C
B
A



PASS 2 PUMP

PASS 1 PUMP

SW ISO VIEW

NE ISO VIEW

REV	DESCRIPTION	ECO	DWN	APVD	DATE	CHKD	TOLERANCES UNLESS NOTED DECIMALS .XX ± 0.50 .XXX ± 1/2"	DIMENSIONS IN INCHES DO NOT SCALE	THIRD ANGLE	DRAWN BY DJS	DATE 29NOV16	CHECKED BY DLT	DATE 02DEC16	APPROVED BY SA	DATE 02DEC16	CLIENT/JOB GE GPS - MSU - TANDIL ARGENTINA PROJECT NO.: 20526-1094237	FILE AUTOCAD	TITLE GA,ASSY,PROCELL,NAM,100DP, 50HZ,380V	MATERIAL SEE BOM	SIZE D	DRAWING NO. 502982E-PG-01	REV A
A	INITIAL RELEASE	-	-	-	-	-																

8 7 6 5 4 3 2 1

P/N 1161662-RHP01