

20AC Series

1/8" Flow Size - Legacy Metal Latch

Trouble Free Couplings, Resistant To Most Mild Chemicals

Nordson MEDICAL's LinkTech line of 20AC quick connect couplings are produced in a durable natural acetal (POM) thermoplastic. These couplings are resistant to most mild chemicals and are manufactured to be trouble free for many years of service. They are available with internal shut-off valves or straight through designs. They are intuitive to use and make an audible "click" when coupled. The 20AC Series couplings interconnect with all other 20PP and 20CB Series couplings as well as other similar industry thumb-latch type couplings.



Features & Benefits

- Legacy metal thumb-latch couplings available with hose barb, PTFE and threaded terminations
- Resistant to most mild chemicals
- Intuitive, easy-to-use design
- Audible click when coupled
- Available with internal shut-off valves or straight-through designs
- Interconnect with each other and with similar industry thumb-latch couplings

Specifications

- **Materials:**
 - Bodies & Terminations: Acetal (POM)
 - Internal Valves: Acetal (POM)
 - Internal Valve Springs: 316 Stainless Steel
 - O-rings: Buna-N (others available)
 - Thumb-latch: Stainless Steel
 - External Springs & Pins: Stainless Steel
- **Performance Ratings:**
 - Operating Pressure: Vacuum to 120psi; (8.3bar)
 - Temperature: -40°F to 180°F; (-40°C to 82°C)
 - Flow Capacity: 1/8" (3.2 mm)
 - Fits Tubing IDs: 1/16" (1.6 mm) - 1/4" (6.4 mm)

20AC Series

1/8" Flow Size - Legacy Metal Latch

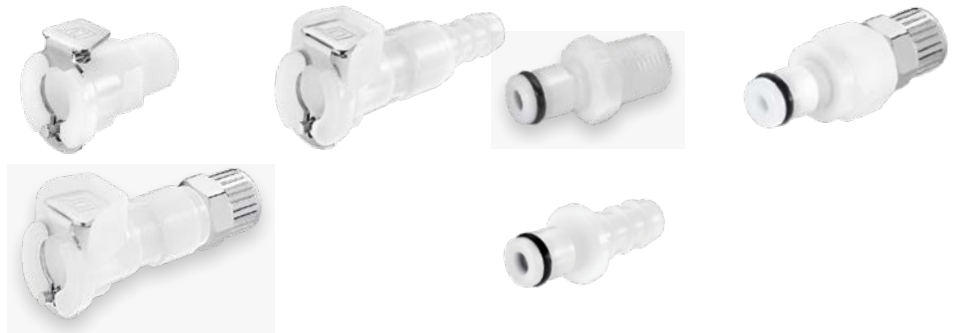
Part Style

Female Part Image

Male Part Image

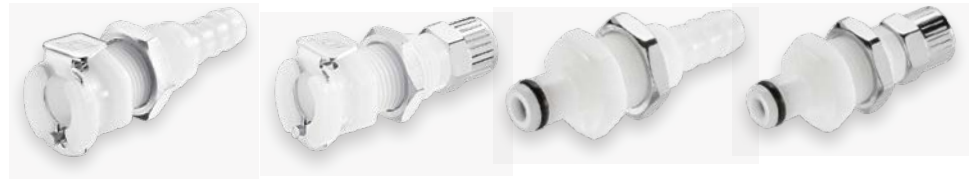
Open Flow Straight

1/16" (1.6 mm) tube ID
1/8" (3.2 mm) tube ID & threaded
5/32" (4.0 mm) tube ID
3/16" (4.8 mm) tube ID
1/4" (6.4 mm) tube ID & threaded
3/8" (9.5 mm) threaded



Open Flow Panel Mount

5/32" (4.0 mm) tube ID
1/4" (6.4 mm) tube ID



Open Flow Elbow

1/8" (3.2 mm) tube ID
1/4" (6.4 mm) tube ID



Valved Straight

1/16" (1.6 mm) tube ID
1/8" (3.2 mm) tube ID & threaded
5/32" (4.0 mm) tube ID
3/16" (4.8 mm) tube ID
1/4" (6.4 mm) tube ID & threaded
3/8" (9.5 mm) threaded



Valved Panel Mount

5/32" (4.0 mm) tube ID
1/4" (6.4 mm) tube ID



Valved Elbow

1/8" (3.2 mm) tube ID
1/4" (6.4 mm) tube ID



MAR-20AC-DS-01

20CB Series

1/8" Flow Size - Legacy Metal Latch

Durable Couplings Withstanding Higher Pressures

Nordson MEDICAL's LinkTech line of 20CB quick connect couplings are produced in food grade chrome plated brass material. These couplings are more durable and withstand higher pressures. They are available with internal shut-off valves or straight through designs. They are intuitive to use and make an audible "click" when coupled. The 20CB Series couplings interconnect with all other 20AC and 20PP Series couplings as well as other similar industry thumb-latch type couplings.



Features & Benefits

- Legacy metal thumb-latch couplings available with hose barb, PTF and threaded terminations
- Intuitive, easy-to-use design
- Audible click when coupled
- Available with internal shut-off valves or straight-through designs
- Interconnect with each other and with similar industry thumb-latch couplings

Specifications

- **Materials:**
 - Bodies & Terminations: Food Grade Chrome/Brass
 - Internal Valves: Acetal (POM)
 - Internal Valve Springs: 316 Stainless Steel
 - O-rings: Buna-N (others available)
 - Thumb-latch: Stainless Steel
 - External Springs & Pins: Stainless Steel
- **Performance Ratings:**
 - Operating Pressure: Vacuum to 250psi; (17.3bar)
 - Temperature: -40°F to 180°F; (-40°C to 82°C)
 - Flow Capacity: 1/8" (3.2 mm)
 - Fits Tubing IDs: 1/16" (1.6 mm) - 1/4" (6.4 mm)

20CB Series

1/8" Flow Size - Legacy Metal Latch

Part Style

Part Image

Open Flow Straight

1/8" (3.2 mm) tube ID & threaded
5/32" (4.0 mm) tube ID
3/16" (4.8 mm) tube ID
1/4" (6.4 mm) tube ID & threaded
Female and Male



Open Flow Panel Mount

1/8" (3.2 mm) tube ID & threaded
5/32" (4.0 mm) tube ID
3/16" (4.8 mm) tube ID
1/4" (6.4 mm) tube ID & threaded
Female and Male



Open Flow Elbow

1/8" (3.2 mm) tube ID
1/4" (6.4 mm) tube ID
Male ONLY



Valved Straight

1/8" (3.2 mm) tube ID & threaded
5/32" (4.0 mm) tube ID
3/16" (4.8 mm) tube ID
1/4" (6.4 mm) tube ID & threaded
Female and Male



Valved Panel Mount

1/8" (3.2 mm) tube ID & threaded
5/32" (4.0 mm) tube ID
3/16" (4.8 mm) tube ID
1/4" (6.4 mm) tube ID & threaded
Female and Male



Valved Elbow

1/8" (3.2 mm) tube ID
1/4" (6.4 mm) tube ID
Male ONLY



MAR-20CB-DS-01

20PP Series

1/8" Flow Size - Legacy Metal Latch

Gamma Sterilizable Couplings Available in Multiple Colors

Nordson MEDICAL's LinkTech line of 20PP quick connect couplings are produced from medical grade, gamma sterilizable polypropylene. These legacy metal latch couplings offer greater chemical resistance. They are available with internal shut-off valves or straight through designs. They are intuitive to use and make an audible "click" when coupled. These couplings are available in Legacy Almond and Modern Cool Grey colors. The 20PP Series couplings interconnect with all other 20AC and 20CB Series couplings as well as other similar industry thumb-latch type couplings.



Features & Benefits

- Legacy metal thumb-latch couplings available with hose barb, PTF and threaded terminations
- Offer greater chemical resistance
- Intuitive, easy-to-use design
- Audible click when coupled
- Available with internal shut-off valves or straight-through designs
- Available in 2 standard colors: almond and grey
- Interconnect with each other and with similar industry thumb-latch couplings

Specifications

- **Materials:**
 - Bodies & Terminations: Medical Grade Polypropylene
 - Internal Valves: Medical Grade Polypropylene
 - Internal Valve Springs: 316 Stainless Steel
 - O-rings: Peroxide-cured EPDM (others available)
 - Thumb-latch: Stainless Steel
 - External Springs & Pins: Stainless Steel
- **Performance Ratings:**
 - Operating Pressure: Vacuum to 120psi; (8.3bar)
 - Temperature: 32°F to 160°F; (0°C to 71°C)
 - Flow Capacity: 1/8" (3.2 mm)
 - Fits Tubing IDs: 1/16" (1.6 mm) - 1/4" (6.4 mm)
 - Sterilization: Gamma; 50kGy irradiation max

20PP Series

1/8" Flow Size - Legacy Metal Latch

Part Style

Part Image

Open Flow Straight

1/16" (1.6 mm) tube ID
1/8" (3.2 mm) tube ID & threaded
5/32" (4.0 mm) tube ID
1/4" (6.4 mm) tube ID & threaded
Female and Male



Open Flow Panel Mount

1/16" (1.6 mm) tube ID
1/8" (3.2 mm) tube ID
1/4" (6.4 mm) tube ID
Female ONLY



Open Flow Elbow

1/8" (3.2 mm) tube ID
1/4" (6.4 mm) tube ID
Male ONLY



Valved Straight

1/16" (1.6 mm) tube ID
1/8" (3.2 mm) tube ID & threaded
5/32" (4.0 mm) tube ID
1/4" (6.4 mm) tube ID & threaded
Female and Male



Valved Panel Mount

1/16" (1.6 mm) tube ID
1/8" (3.2 mm) tube ID
1/4" (6.4 mm) tube ID
Female ONLY



Valved Elbow

1/8" (3.2 mm) tube ID
1/4" (6.4 mm) tube ID
Male ONLY



MAR-20PP-DS-01

Nordson MEDICAL
7125 Northland Terrace N, Suite 200
Minneapolis, MN 55428, USA

+1.888.404.5837
nordsonmedical.com


Nordson
MEDICAL