

Difference between AQA-total cartridge old / new (since cartridge Nr. 236000)

NEW
1

OLD

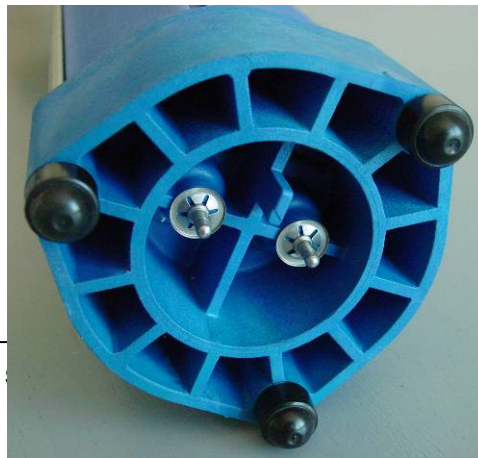
NEW
2

OLD

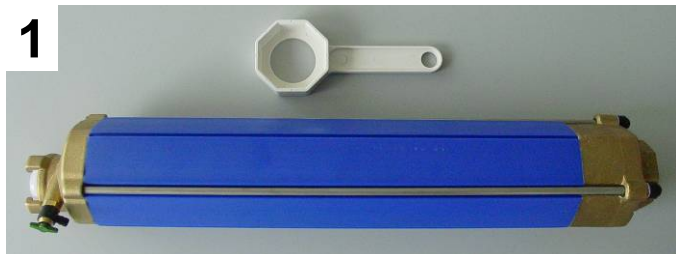

Modifications:

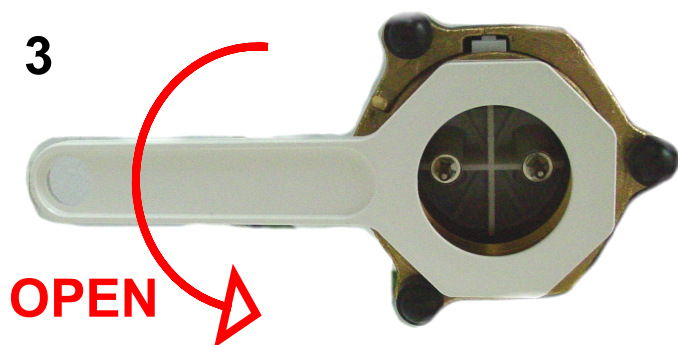
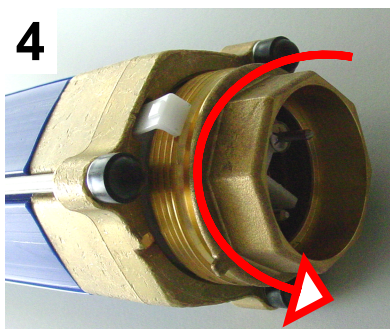
1. The plastic floor flange changed into press-brass flange, cartridge will be 5 mm longer.
2. Sealing outwards through 2 o-ring gaskets (flange and device). Refill will be replaced though a complete device.
3. The change of the device will be carried out on the lower surface (brass-flange). The whole cartridge don't have be changed (see enclosure: change the device)

3
NEW

OLD


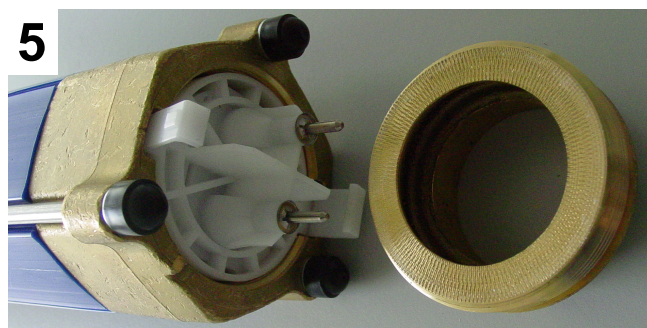
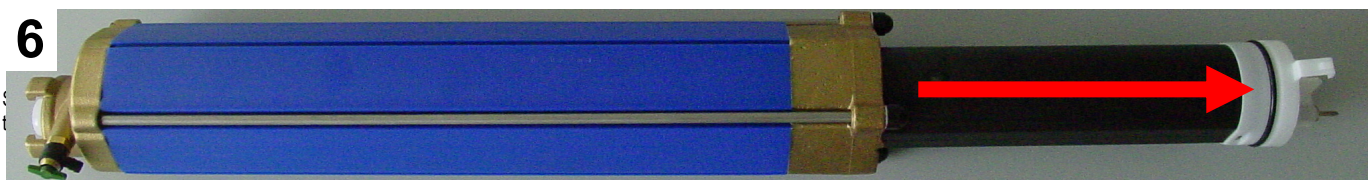
Change the device by AQA-total cartridge new (since cartridge Nr. 236000)

1

2

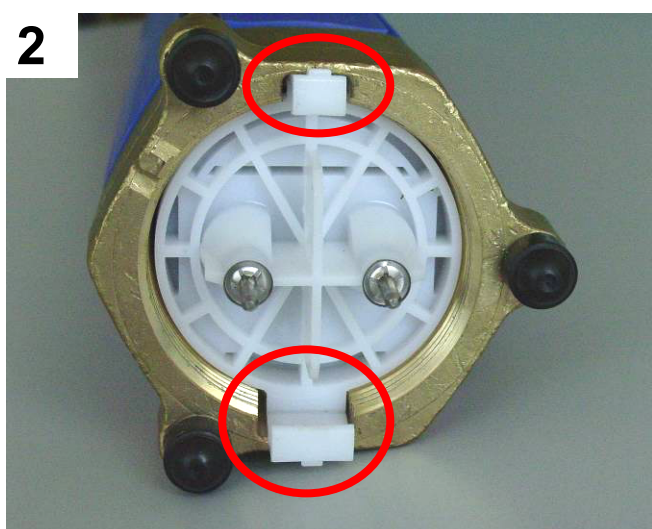
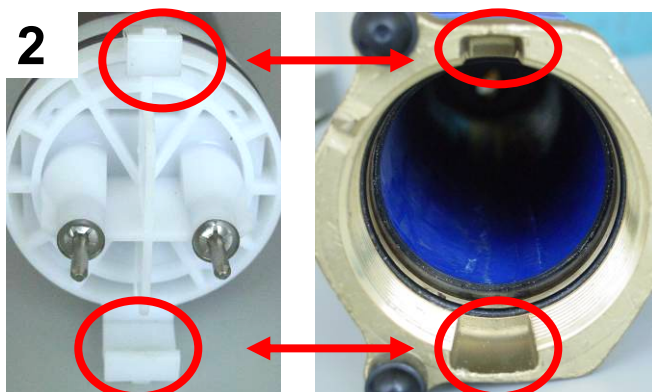
3

4


A. Dismounting of used devices

1. Remove and deplete the cartridge from AQA-total.
2. Demount the cup nut of the brass-flange with the key which will be delivered with the device.
3. Move the key clockwise.
4. By dismantling of the cup nut the device will be removed too.
5. Loose the cup nut from the brass-flange.
6. Remove the device from the cartridge.

5

6


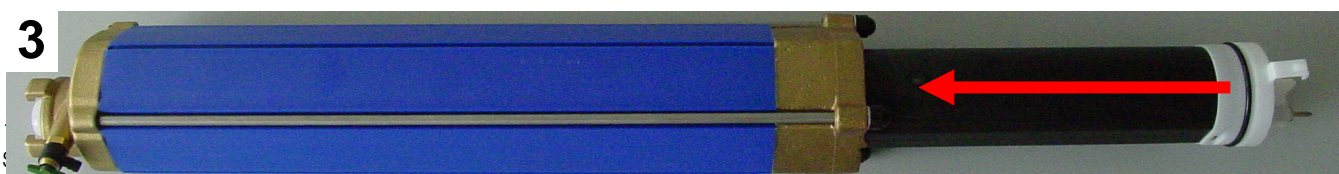
Change the device by AQA-total cartridge new (since cartridge Nr. 236000)



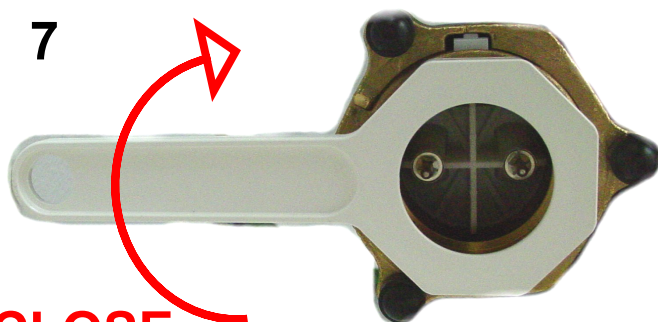
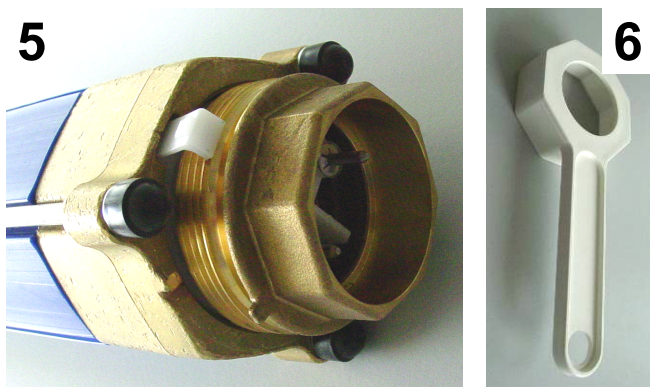
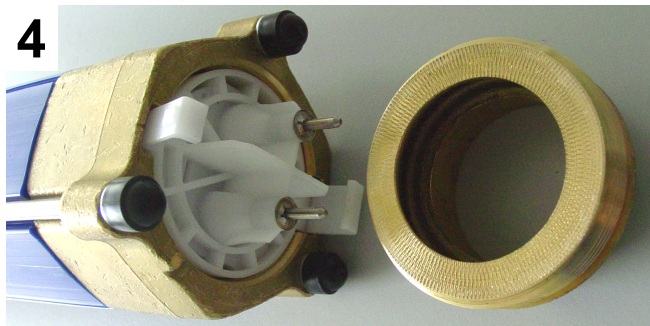
B. Installation

(mounting of the new device)

1. To unpack the new device.
2. Watch the mounting direction (devices can be mounted just in one direction):
 - 2 a. At the flange there are 2 cuts (recesses) with different broadness, 180° displaced
 - 2 b. The broadness of the cut have to comply with the mounting link.
3. Install device into the cartridge.



Change the device by AQA-total cartridge new (since cartridge Nr. 236000)



CLOSE



B. Installation

(mounting of the new device):

4. Abandon the device from the flange.
5. Put in the cup nut into the mounting link.
6. Turn back the cup nut at the brass-flange with delivered 8-kant key.
7. Turn the key clockwise.
8. Tighten up the cupnut til – the limit Stop of the flange.
9. If is completed, please mount the cartridge to the AQA-total.