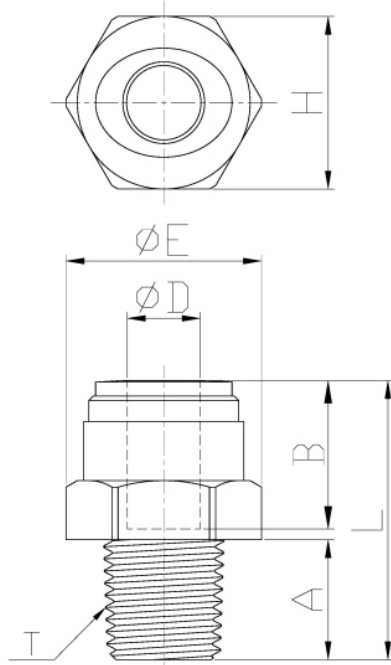


# Male Connector (NPTF)

Pressure Ratings			
	< 5/16"	3/8"	1/2"
33 °F	290 psi	232 psi	203 psi
68 °F	290 psi	232 psi	203 psi
150 °F	232 psi	203 psi	116 psi

Torque Allowance					
Thread Size	1/8"	1/4"	3/8"	1/2"	3/4"
Max Torque	1.1 ft lbs	1.1 ft lbs	2.2 ft lbs	2.2 ft lbs	2.9 ft lbs



Model	D	T (NPTF)	A	B	E	H	L	Weight (g)
AMCZ5-N1	5/32	1/8	0.358	0.579	0.701	5/8	0.874	3.2
AMCZ5-N2	5/32	1/4	0.520	0.579	0.701	5/8	0.996	4.3
AMC3-N1	3/16	1/8	0.358	0.591	0.701	5/8	0.882	3.1
AMC3-N2	3/16	1/4	0.520	0.591	0.701	5/8	1.004	4.2
AMC4-N1	1/4	1/8	0.358	0.665	0.701	5/8	1.063	3.9
AMC4-N2	1/4	1/4	0.520	0.665	0.701	5/8	1.063	4.3
AMC4-N3	1/4	3/8	0.543	0.665	0.843	3/4	1.028	6.1
AMC4-N4	1/4	1/2	0.701	0.665	0.984	7/8	1.185	9.6
AMC5-N1	5/16	1/8	0.358	0.689	0.843	3/4	1.118	5.6
AMC5-N2	5/16	1/4	0.520	0.689	0.843	3/4	1.098	5.2
AMC5-N3	5/16	3/8	0.543	0.689	0.843	3/4	1.043	6
AMC5-N4	5/16	1/2	0.701	0.689	0.984	7/8	1.307	11.5
AMC6-N1	3/8	1/8	0.358	0.795	0.906	13/16	1.197	6.7
AMC6-N2	3/8	1/4	0.520	0.795	0.906	13/16	1.350	7.9
AMC6-N3	3/8	3/8	0.543	0.795	0.906	13/16	1.177	7.5
AMC6-N4	3/8	1/2	0.701	0.795	0.984	7/8	1.335	11
AMC8-N3	1/2	3/8	0.543	0.988	1.079	31/32	1.512	11.7
AMC8-N4	1/2	1/2	0.701	0.988	1.079	31/32	1.492	12.7