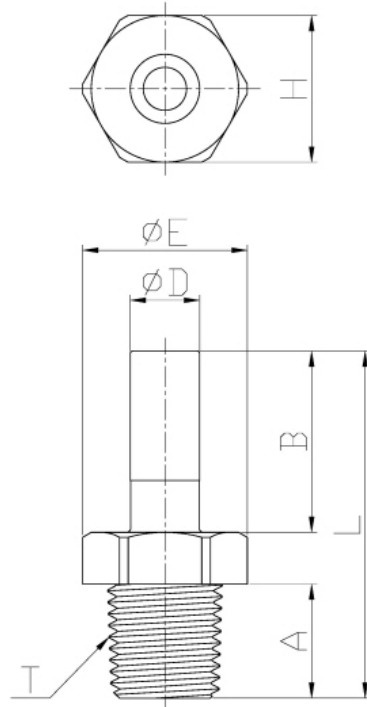


Stem Adapter (BSPT)

Pressure Ratings			
	< 5/16"	3/8"	1/2"
33 °F	290 psi	232 psi	203 psi
68 °F	290 psi	232 psi	203 psi
150 °F	232 psi	203 psi	116 psi

Torque Allowance					
Thread Size	1/8"	1/4"	3/8"	1/2"	3/4"
Max Torque	1.1 ft lbs	1.1 ft lbs	2.2 ft lbs	2.2 ft lbs	2.9 ft lbs



Model	ØD	T(BSPT)	A	B	ØE	H(Hex)	L	WEIGHT(g)
ASA4M-R1	04	1/8	9.1	18	14.4	13	33.1	1.8
ASA4M-R2	04	1/4	13.1	18	18.5	17	37.1	3.5
ASA6M-R1	06	1/8	9.1	19.5	14.4	13	34.6	2
ASA6M-R2	06	1/4	13.1	19.5	18.5	17	38.6	3.7
ASA8M-R1	08	1/8	9.1	21	14.4	13	36.1	2.2
ASA8M-R2	08	1/4	13.1	21	18.5	17	40.1	3.8
ASA8M-R3	08	3/8	13.5	21	23	21	40.5	5.3
ASA10M-R2	10	1/4	13.1	24	18.5	17	43.1	4.5
ASA10M-R3	10	3/8	13.5	24	23	21	44	6.1
ASA10M-R4	10	1/2	16.5	24	26.5	24	47	9.7
ASA12M-R3	12	3/8	13.5	28	23	21	48	6.8
ASA12M-R4	12	1/2	16.5	28	26.5	24	51	10.2