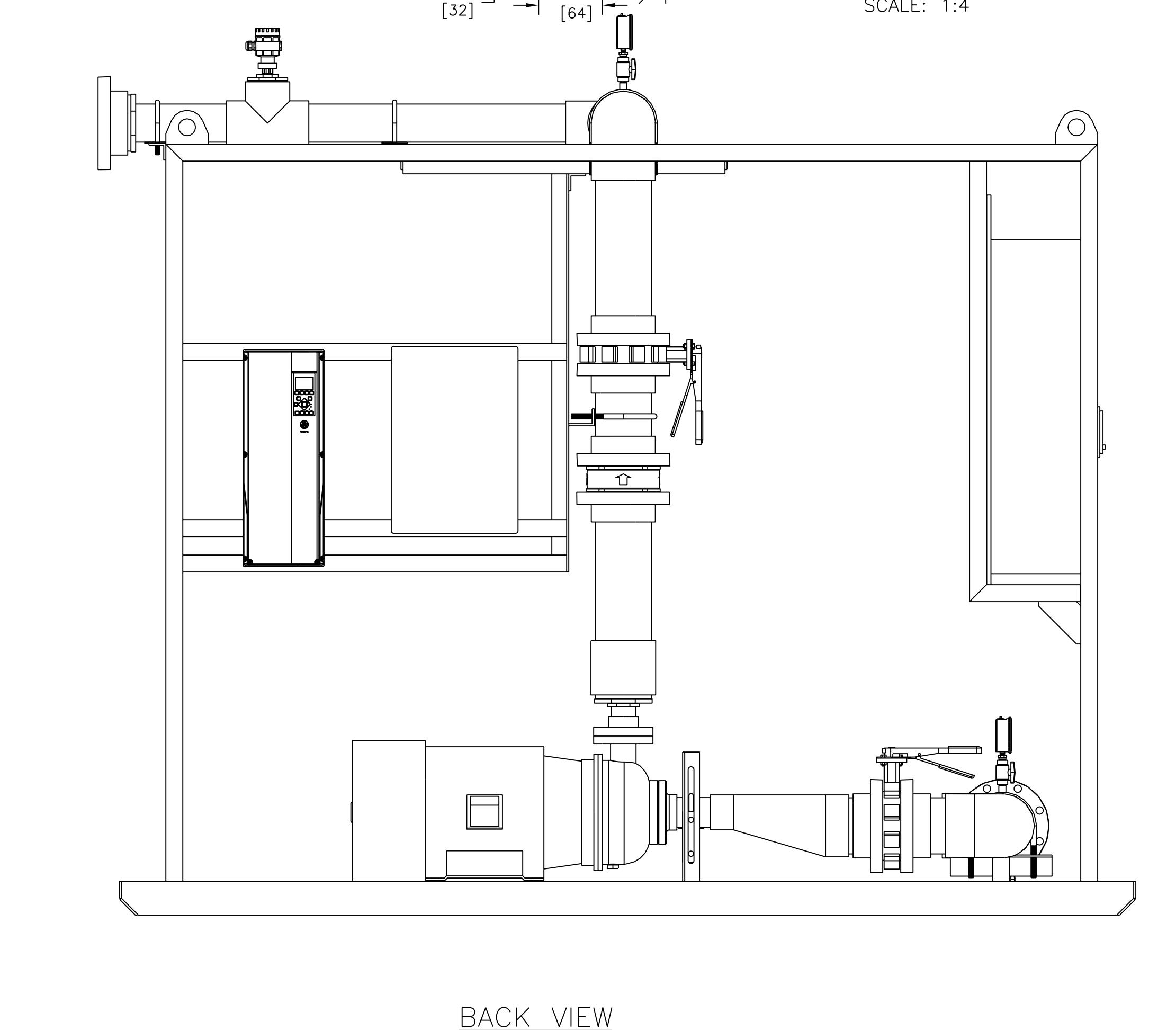
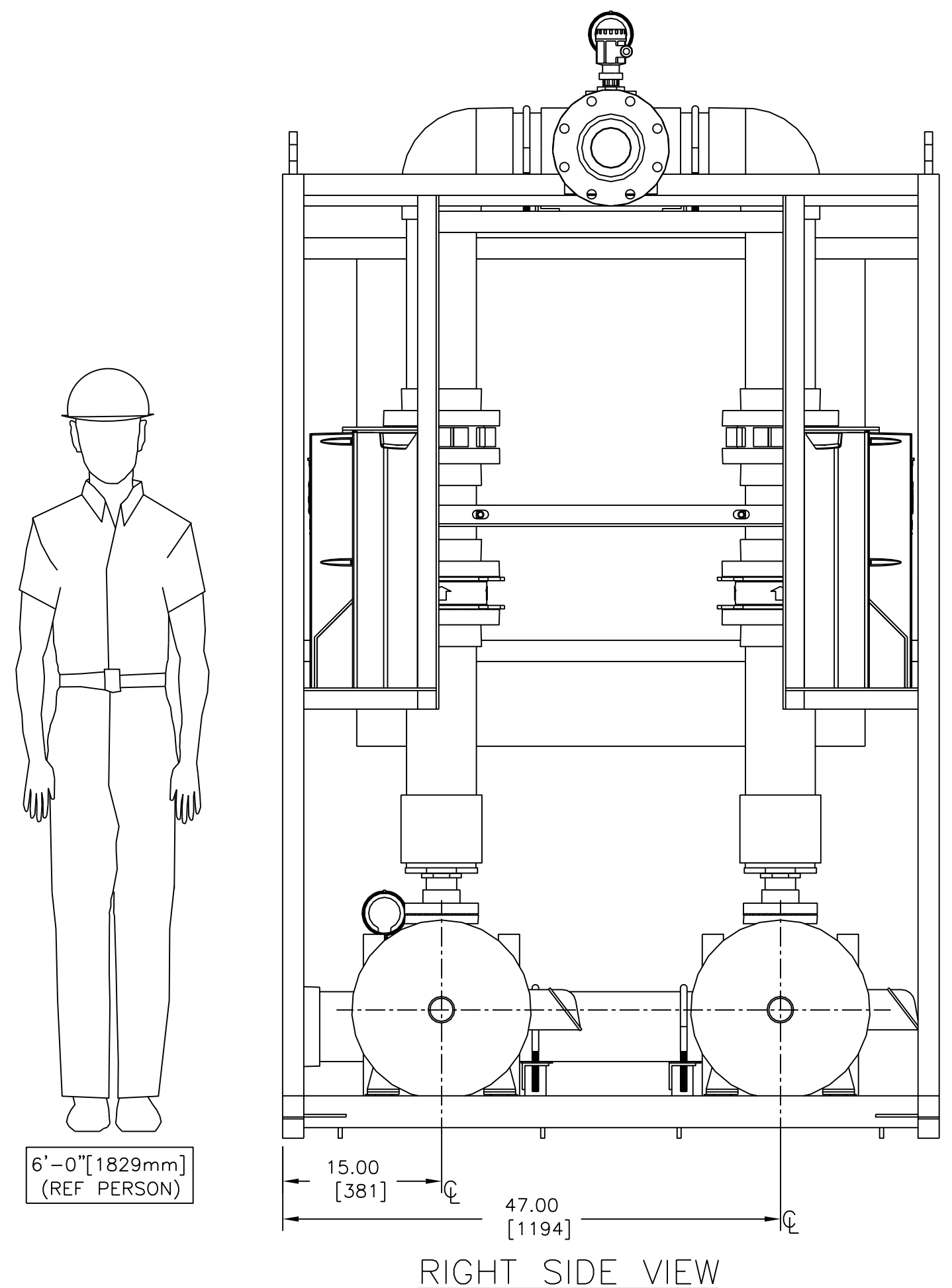
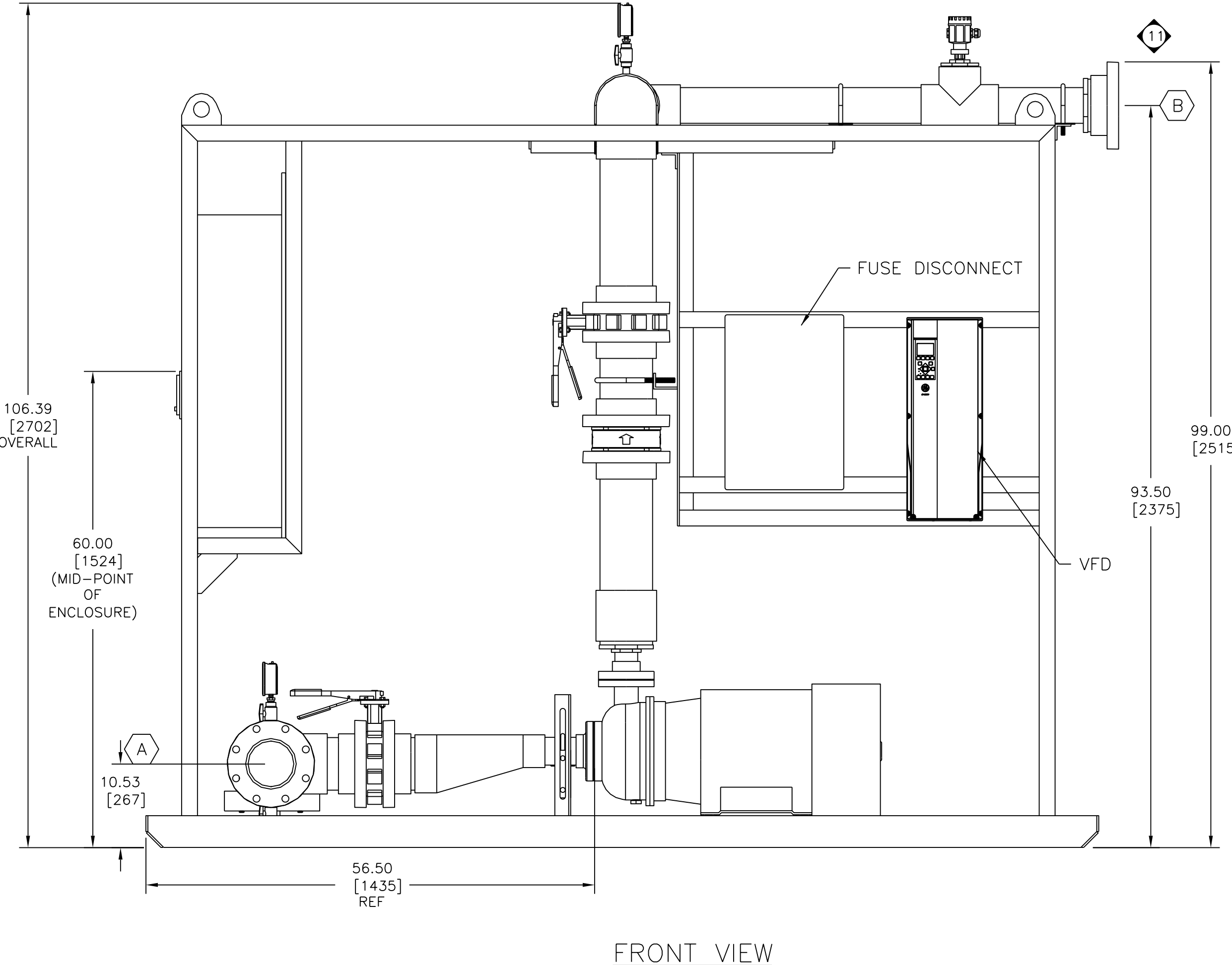
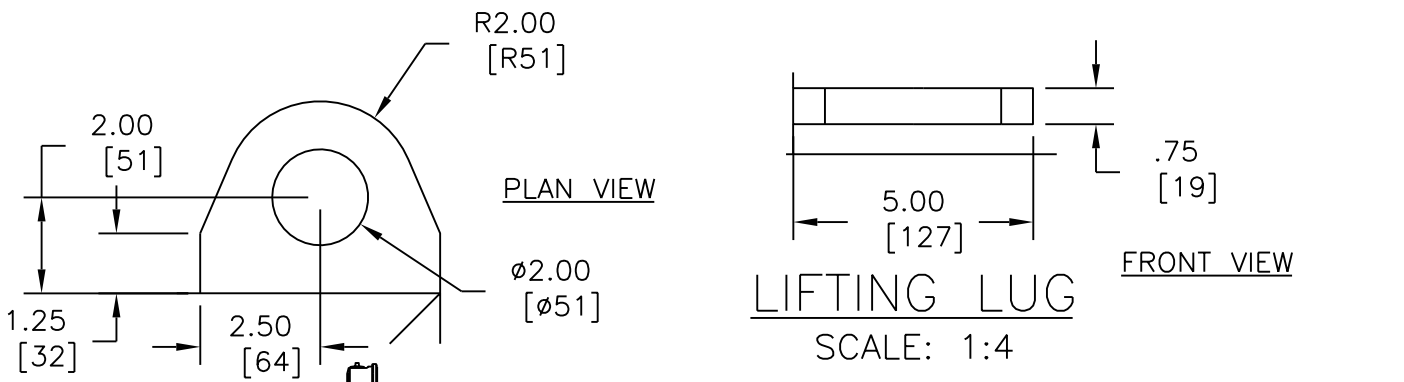
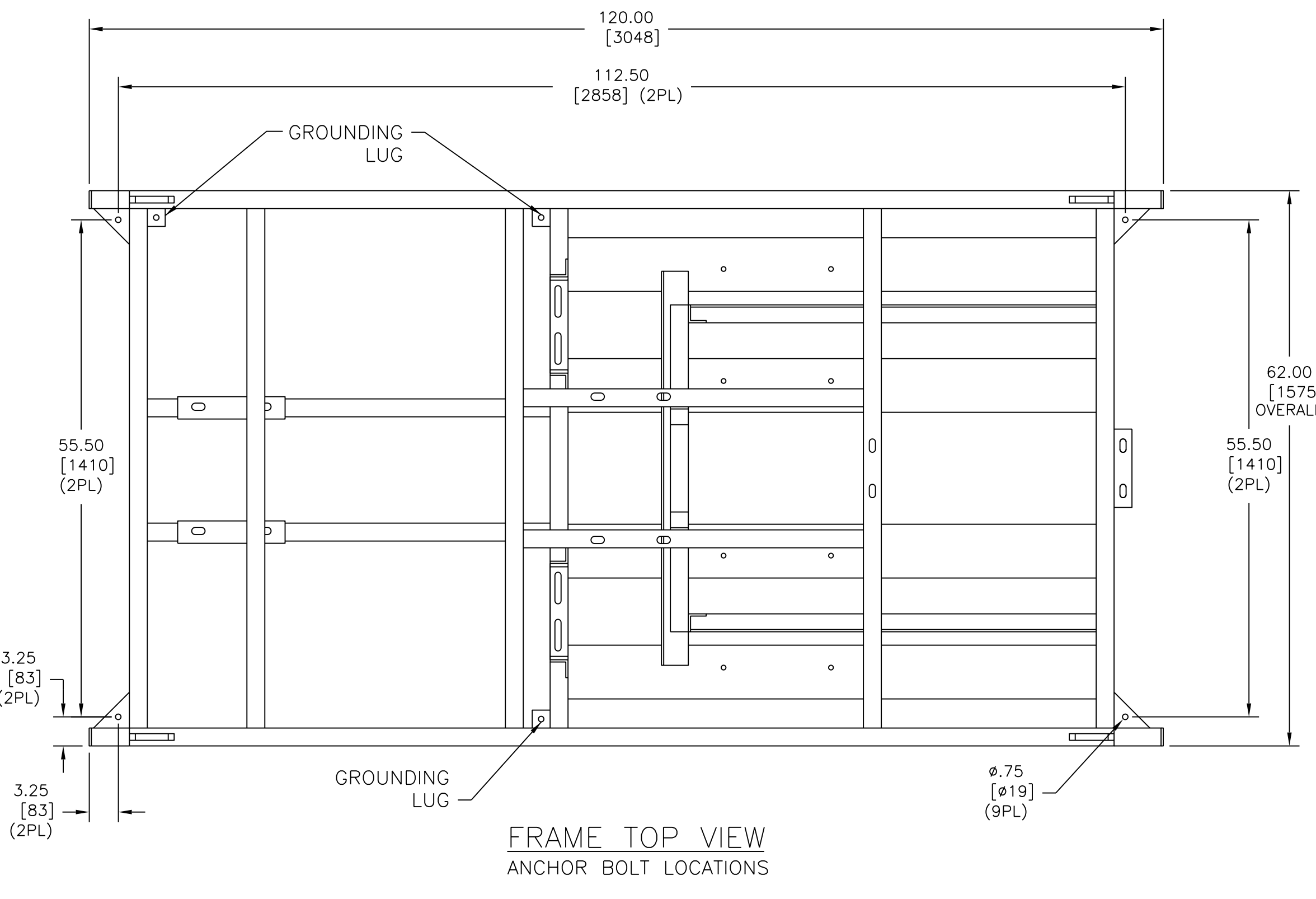
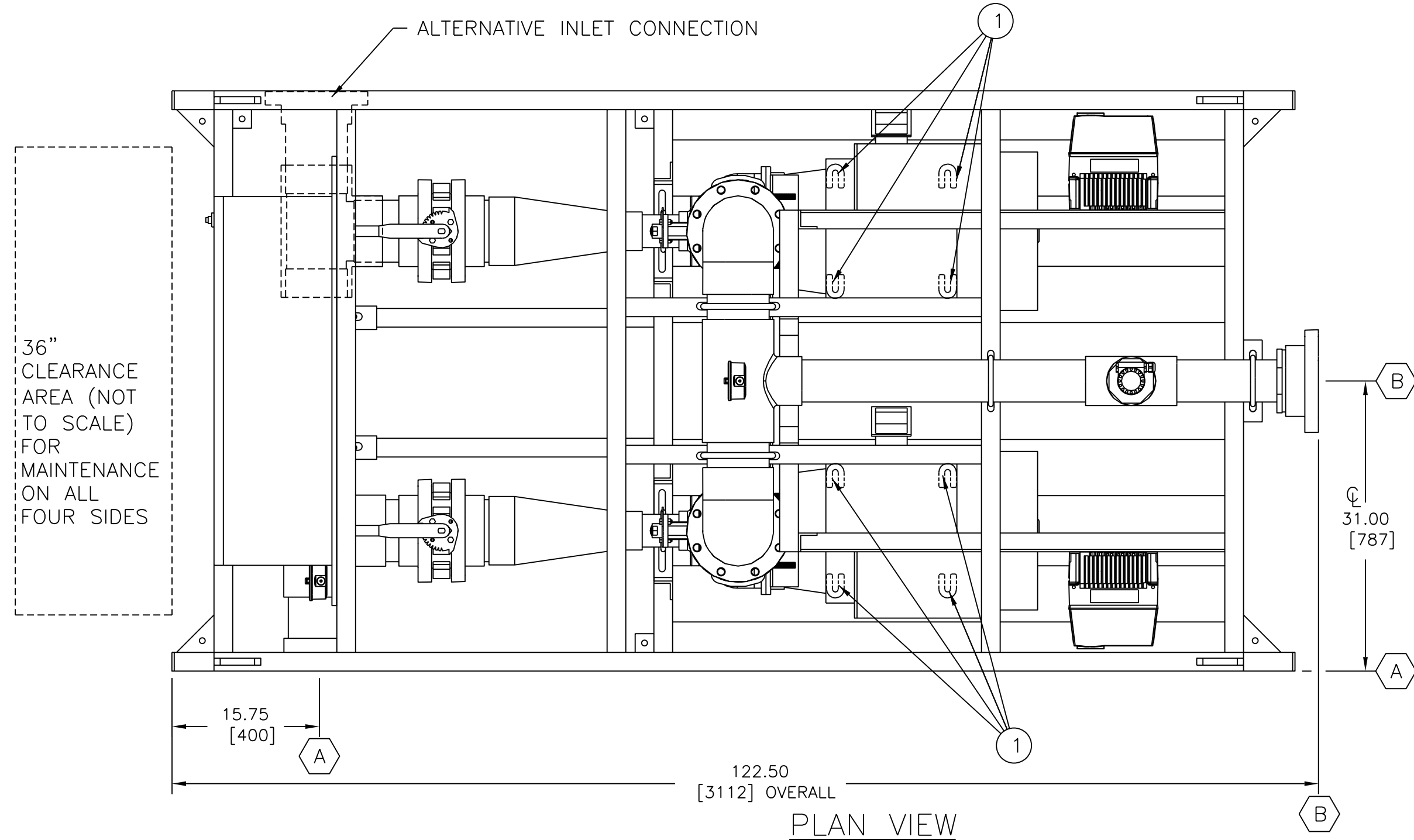


NOTES:

1. CONNECTION TABLE
 2. SHIPPING WEIGHT - 3450 LB/[1565 Kg].
 3. OPERATING WEIGHT - 3800 LB/[1724 Kg].
 4. PLUMBING RUN \ EQUIPMENT TABLE:
- | ITEM | DESCRIPTION | TYPE | SIZE |
|------|----------------------------|----------|------|
| (A) | FEED INLET FROM TANK | 150# FLG | 6.0" |
| (B) | FEED DISCHARGE TO MMF SKID | 150# FLG | 6.0" |
-
- | FIND NO. | PART NUMBER | QTY. | DESCRIPTION | U/M |
|----------|---------------|------|--|-----|
| 1 | 1235496 | 8 | SHIM, PLASTIC, 1.88X2.63X0.125, 0.625, SLOT | EA |
| 2 | 3055447 | 2 | VFD, GE, AF650, 52FLA, N4X, 380/480VAC | EA |
| 3 | 3056332 | 2 | PLMB, INLET, BP, PVC, 3.0/6.0, Z-PAK | EA |
| 4 | 3095088 | 2 | PANEL, SHEET, HDPE, 96.00X48.00X0.50 | EA |
| 5 | 501817A-EA-01 | 2 | DISCONNECT-SWITCH, IEC, 600V, ABB, 125A | EA |
| 6 | 501817A-EA-03 | 1 | ELEC, PANEL, BOARD, IEC | EA |
| 7 | 501817A-MA-02 | 2 | PUMP&MTR, 316, 40HP, GL, TEFC, DUAL VOLTAGE | EA |
| 8 | 501817A-PP-01 | 1 | PLMB-PUMP FEED, PVC, 6.0, FEED/BW SKID | EA |
| 9 | 501817A-PP-02 | 2 | PLMB-PUMP, DISCHARGE, PVC, 6.0, FEED/BW SKID | EA |
| 10 | 501817A-PP-03 | 1 | PLMB-PUMP, OUTLET, PVC, 6.0, FEED/BW SKID | EA |
| 11 | 501817A-SA-01 | 1 | ASSY, SKID&FRAME, FEE/BW PUMP, DUAL VOLTAGE | EA |
-
5. ALL PIPING & EQUIPMENT SHOWN TO BE FULLY SUPPORTED BY GE W&PT PRODUCTION.
 6. ALL INTERCONNECTING PIPING SHALL BE FULLY & INDEPENDENTLY SUPPORTED BY OTHERS.
 7. GASKET MATERIAL: EPDM
 8. FASTENER MATERIAL: ZINC PLATED
 9. ALL DIMENSIONS IN INCHES (MILLIMETERS IN BRACKETS).
 10. REFERENCE - PIPING AND INSTRUMENTATION DIAGRAM: 502982-AP-01.
 11. INTERCONNECT PIPING DONE ON SITE TO ENSURE THAT THE FLOW METER REMAINS FLOODED AT ALL TIME.
 12. DRAWING TYPICAL FOR TRAIN 1 AND 2.
 13. X = 1 OR 2.



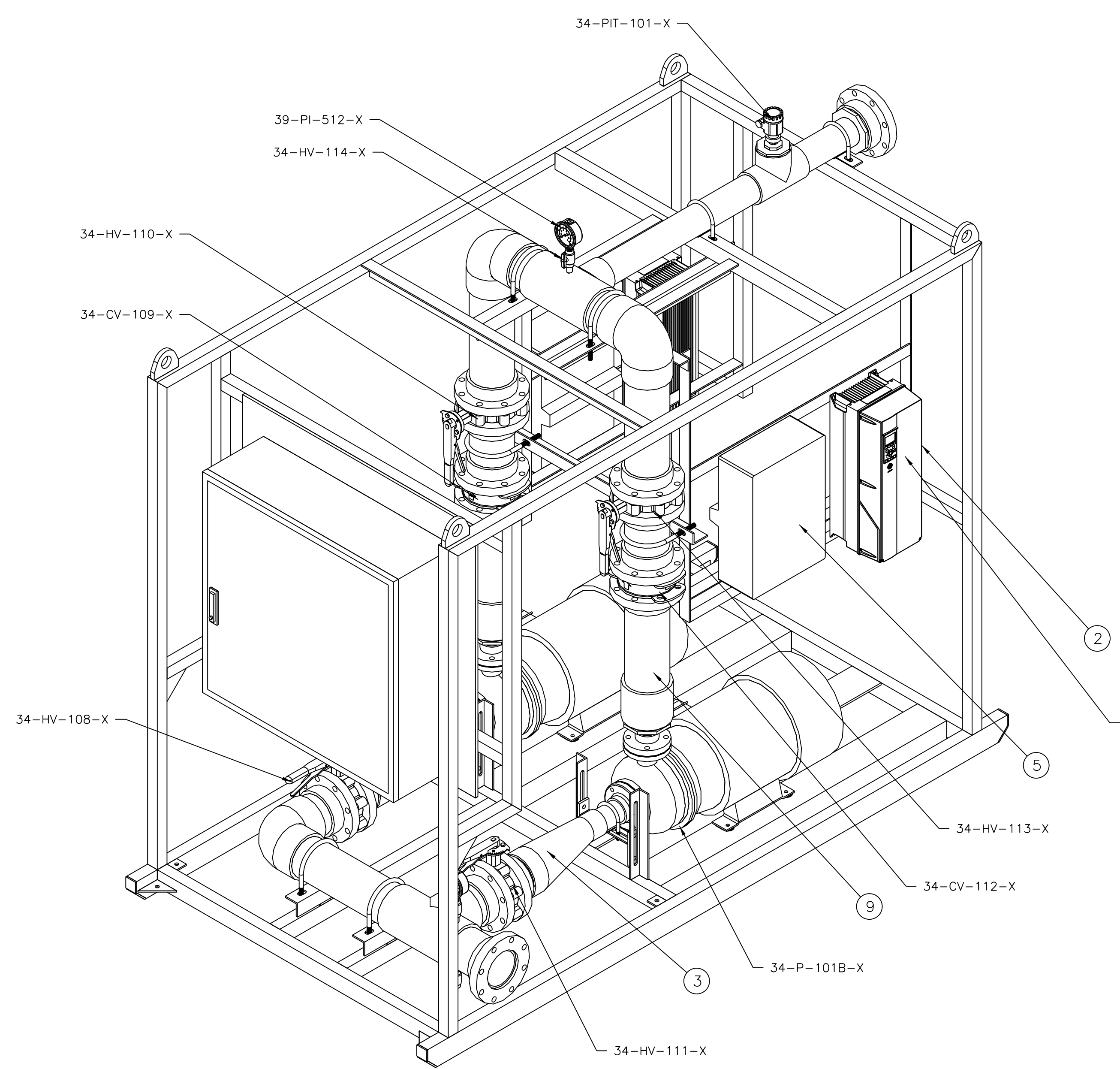
REV	DESCRIPTION	ECO	DWN	APVD	DATE	CHKD	TOLERANCES UNLESS NOTED	DRAWN BY	DATE	CLIENT/JOB	TITLE	SIZE	DRAWING NO.	REV
							DECIMALS ± 0.5 .XX ± 0.50 .XXX ± 1/2"	DJS	29NOV16	GE GPS - MSU - TANDIL ARGENTINA	GA, ASSY-FEED/BW PRP-ECELL, 100 DP DUAL VOL	D	502982B-PG-01	A
							DIMENSIONS IN INCHES DO NOT SCALE	CHECKED BY DLT	02DEC16	PROJECT NO.: 20526-1094237			502982	
							THIRD ANGLE	APPROVED BY SA	02DEC16	FILE AUTOCAD	MATERIAL SEE BOM	SCALE 1:16	SHEET 1 OF 2	
A	INITIAL RELEASE													

GE
Water & Process Technologies
GLOBAL HEADQUARTERS : TREVOSE, PA USA +1-215-355-3300 WWW.GEWATER.COM

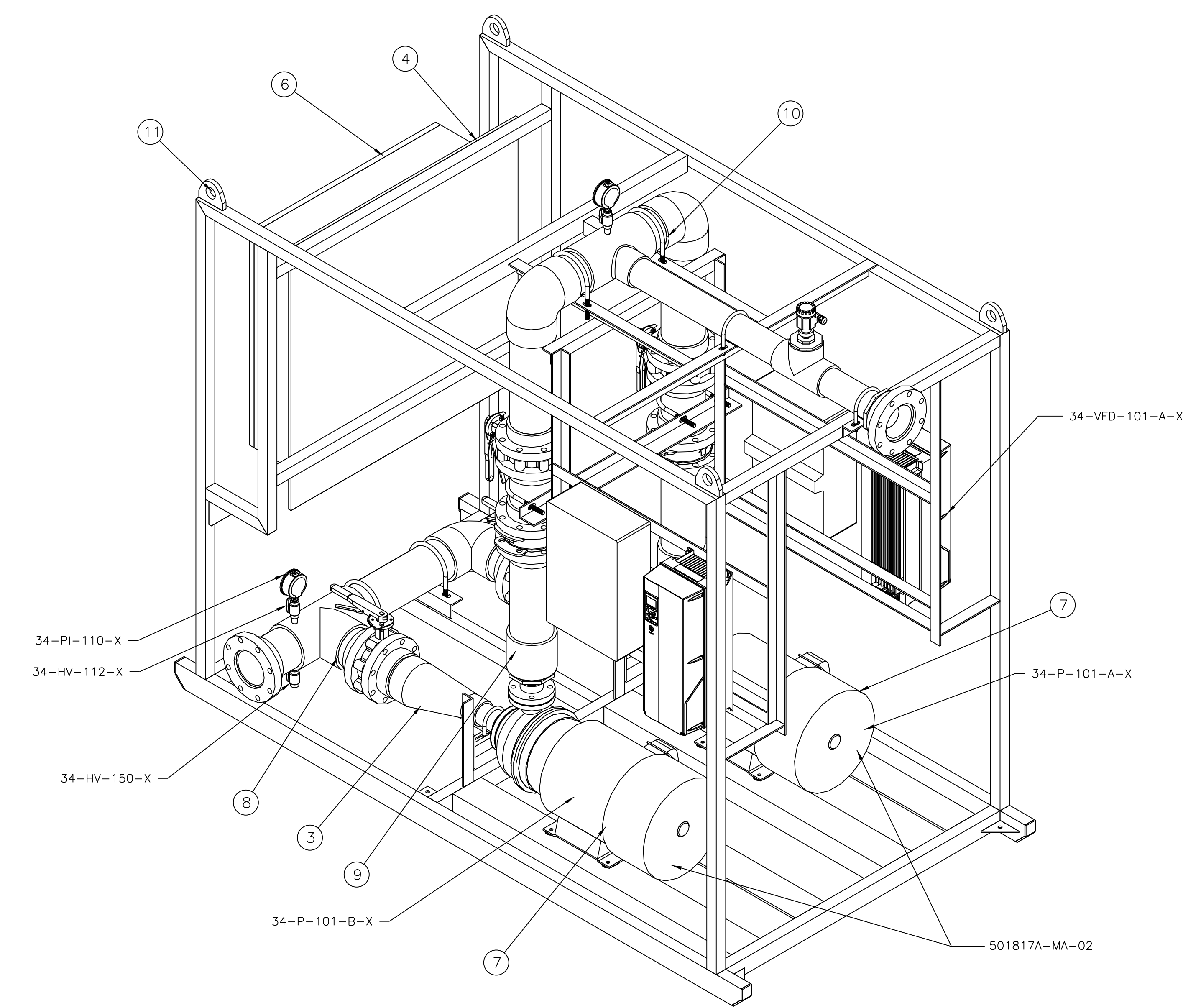
THIS DRAWING, THE DESIGN AND THE PATENTS IT COVERS, IS THE PROPERTY OF GENERAL ELECTRIC COMPANY AND ITS AFFILIATES AND THE INFORMATION CONTAINED HEREIN IS PROPRIETARY INFORMATION WHICH IS NOT TO BE DISCLOSED TO ANYONE WITHOUT PRIOR WRITTEN CONSENT OF SAID COMPANY. THIS DRAWING IS TO BE USED EXCLUSIVELY FOR THE PURPOSES EXPRESSLY AUTHORIZED BY GENERAL ELECTRIC COMPANY AND ITS AFFILIATES THROUGH ITS OFFICERS AND QUALIFIED REPRESENTATIVES AND FOR NO OTHER PURPOSE. NEITHER THIS DRAWING, NOR ANY PORTION THEREOF, SHALL BE REPRODUCED WITHOUT THE PRIOR WRITTEN CONSENT OF SAID COMPANY, AND ANY SUCH REPRODUCTION SHALL BEAR THIS NOTICE.

8 7 6 5 4 3 2 1

D
C
B
A



SW ISOMETRIC VIEW



SE ISOMETRIC VIEW

REV	DESCRIPTION	ECO	DWN	APVD	DATE	CHKD
A	INITIAL RELEASE	-	-	-	-	-

TOLERANCES UNLESS NOTED	DRAWN BY	DATE
DECIMALS	DJS	29NOV16
.XX ± 0.50	CHECKED BY	DATE
.XXX ± 1/2"	DLT	02DEC16
DIMENSIONS IN INCHES	APPROVED BY	DATE
DO NOT SCALE	SA	02DEC16
	APPROVED BY	DATE

THIRD ANGLE	APPROVED BY	DATE

GE Water & Process Technologies
 GLOBAL HEADQUARTERS : TREVISO, PA USA +1-215-355-3300 WWW.GEWATER.COM

THIS DRAWING, THE DESIGN AND THE PATENTS IT COVERS, IS THE PROPERTY OF GENERAL ELECTRIC COMPANY AND ITS AFFILIATES AND THE INFORMATION CONTAINED HEREIN IS PROPRIETARY INFORMATION WHICH IS NOT TO BE DISCLOSED TO ANYONE WITHOUT PRIOR WRITTEN CONSENT OF SAID COMPANY. THIS DRAWING IS TO BE USED EXCLUSIVELY FOR THE PURPOSES EXPRESSLY AUTHORIZED BY GENERAL ELECTRIC COMPANY AND ITS AFFILIATES THROUGH ITS OFFICERS AND QUALIFIED REPRESENTATIVES AND FOR NO OTHER PURPOSE. NEITHER THIS DRAWING, NOR ANY PORTION THEREOF, SHALL BE REPRODUCED WITHOUT THE PRIOR WRITTEN CONSENT OF SAID COMPANY, AND ANY SUCH REPRODUCTION SHALL BEAR THIS NOTICE.

CLIENT/JOB	TITLE
GE GPS - MSU - TANDIL ARGENTINA PROJECT NO.: 20526-1094237	GA,ASSY-FEED/BW PRP-ECELL, 100 DP DUAL VOL
FILE	MATERIAL
AUTOCAD	SEE BOM

SIZE	DRAWING NO.	REV
D	502982B-PG-01	A
PROJECT	502982	
SCALE	1:16	
	SHEET 2 OF 2	

P/N	1161662-RHP01
-----	---------------

8 7 6 5 4 3 2 1