

HARBIN ROPV INDUSTRY DEVELOPMENT CENTER

ROPV R25 E Series User Manual

For Use with the Following ROPV Pressure Vessel Models:

R25 600E R25 1000E

Headquarters

Tel: (+86)451-82267301
Fax: (+86)451-82267303
Email: ropv@ropv.com.cn
Website: www.ropv.com.cn

Global Market

Phone: (+1)925-237-0184
Fax: (+1)925-264-1951
Email: globalmarket@ropv.com.cn
Website: www.ropv.com.cn

General Product Description – R25 E Series End Port Pressure Vessel

R25 600E Design Pressure:	600PSI / 4.1Mpa / 41Bar (at 150°F / 66°C)
R25 1000E Design Pressure:	1000PSI / 6.9Mpa / 69Bar (at 150°F / 66°C)
Min. Operating Temp.:	14°F / -10°C
Max. Operating Temp.:	150°F / 66°C
Factory Test Pressure:	ASME: 1.1x Design Pressure Standard: 1.5x Design Pressure
Burst Pressure:	6 x Design Pressure
Operating pH Range:	3 – 11
Cleaning pH Range:	2 – 12 (less than 30 minutes)

General Warning – High Pressure

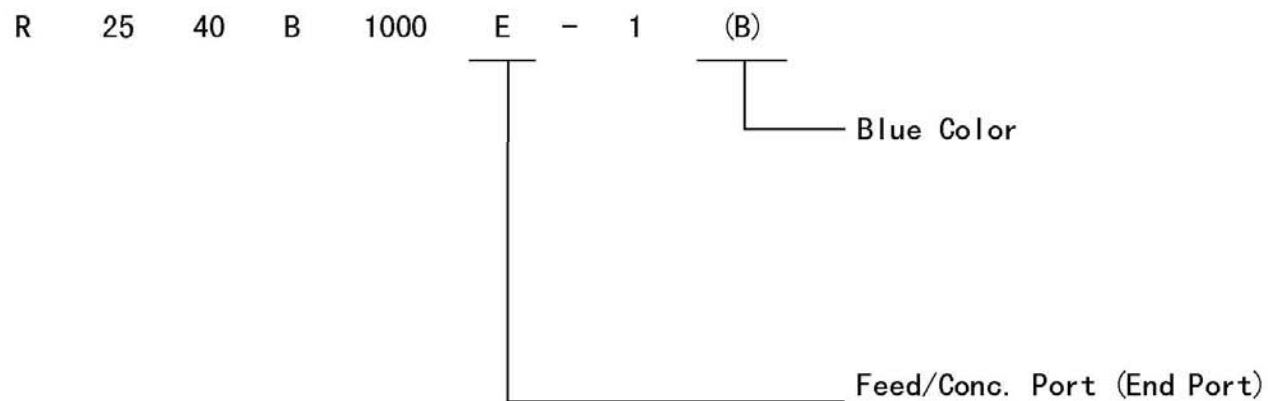
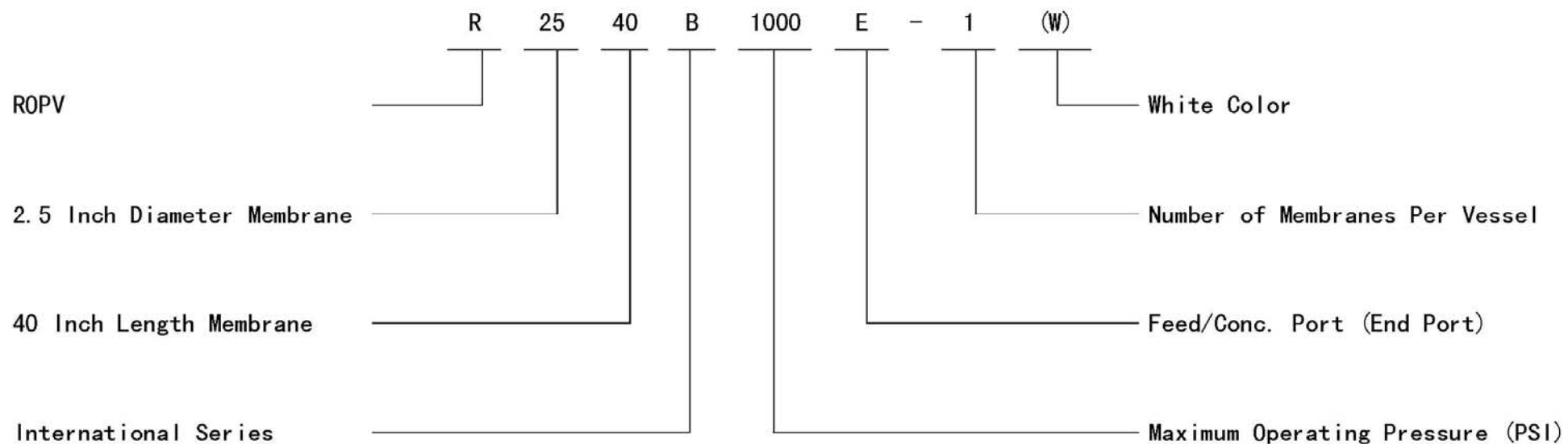
ROPV vessels are designed to provide safe operation over a long service life if properly installed, operated, and maintained. The vessel may cause loss of life, severe bodily harm, or property damage if not correctly installed, operated, or maintained. Read and understand all guidelines provided in the vessel User Guide. Observe every precaution contained therein. Failure to do so may result in malfunction and potential catastrophic failure. Qualified technicians experienced in servicing hydraulic systems should be used to work with this vessel. Misuse, incorrect assembly, or use of damaged/corroded components may result in catastrophic failure.

Vessel Use and Precautions

- Positive pressure up to the design pressure (PSI) of the specific model being used.
- The required vessel/element interface hardware is supplied with the vessel. Ensure that an element adapter is installed at each end of the vessel before use
- Vessel expands under pressure and careful consideration must be taken when installing straps/saddles and system connection piping.
- Installation with the straps/saddles provided is strongly recommended
- Vessel should not support any other system components. Connections should be non-load bearing.
- Periodic inspection of the vessel end closure is recommended to ensure all parts are dry and free of corrosion.
- Failure to understand and follow all precautions may void warranty and result in catastrophic failure of the vessel.
- These guidelines are subject to change. Please check with ROPV to ensure that the User Manual is the latest version for the vessel model being used.
- Mount vessel using strap/saddle hardware provided and span recommended in the engineering drawing.
- Do not over tighten the straps – vessel must be allowed to expand under operation.
- Maximize the connection flexibility to allow for vessel growth under pressure.
- Align the end ports with the system manifold, correcting any misalignment before final installation.
- Provide overpressure protection in the system safety devices.
- Inspect end closures regularly for signs of corrosion. Immediate corrective action and/or replacement is suggested in case of corrosion.
- Relieve system pressure before working on the vessel.

- Do not attempt to over-tighten the Permeate Port connections as this may damage the end closure. One turn past hand tight should be sufficient.
- Never operate the vessel in excess of its ratings. This may void the warranty and cause bodily or property damage.
- Do not operate the vessel permeate port over 125PSI.
- Flush the vessel with permeate before system shutdown to reduce the chance of corrosion.
- Do not install the vessel in direct sunlight.
- Operate the vessel within the recommended pH range - Operating pH Range: 3 – 11, Cleaning pH Range: 2 – 12 (less than 30 minutes).

Model Explanation



End Plug Removal

Step 1 Shut Down System and Relieve System Pressure – The system must be shut down and all pressure relieved before conducting any maintenance or repair on the vessel.

Step 2 Disconnect Permeate Piping – The system piping must be carefully removed from the vessel connections.

Step 3 Inspect End Closure – The end closure should be inspected for any signs of corrosion or damage. Surface corrosion can be removed with a wire brush, while flushing with water. Damaged components should be replaced with approved components from ROPV.

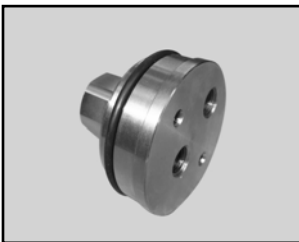
Step 4 Disconnect Locking Screws – Each of the two locking crescents is held in place with a single locking screw. The locking screws can be unthreaded using a standard #5 hex wrench. The locking screws should be unthreaded from the end plug only, not from the locking crescent. The locking screw and locking crescent can be removed together.



Step 5 Remove the End Plug – A threaded 1/4” pipe nipple is recommended for use when opening the end plug. Thread the pipe nipple into the Feed/Concert port of the end plug, gently motion the nipple in various directions, and then gently pull the nipple from the vessel. A firm tug may be required to release the end plug o-ring seal.



Complete End Plug



End plug

End Plug Inspection

Step 1 Inspect O-rings - Remove the end plug o-ring, permeate o-ring using a dull, non-metallic tool. All o-rings should be carefully inspected for signs of damage. It is recommended that all o-rings be replaced during each complete servicing of the vessel. Failure to do so may cause poor system performance.

Step 2 Inspect End Plug - End plug should be free from scratches, foreign matter, or any sign of damage. Scratched or damaged components should be replaced with ROPV supplied replacement components. All components should be cleaned with a mild soap solution or clean water. The components should be air dried or dried with a lint-free towel.

End Plug Installation

Step 1 General Inspection - Inspect inside of vessel, checking for surface imperfections or any outside material. Surface imperfections can be removed by lightly sanding the area with 600-grit sandpaper. Rinse the vessel completely after any repairs.

Step 2 Install Permeate Port O-ring– O-ring should be coated with a thin layer of glycerine before installation. Seat one permeate port o-ring into the two groove located at the element end..

Step 3 Install End Plug O-ring -Install the end plug seal in the grooved area on the outside diameter of the end plug - the groove should be clear of any sharp edges and foreign matter. Take care to ensure that the seals are properly seated in the groove and are not pinched. Do not use sharp implements when installing the seals.

Step 4 Install the End Plug - Carefully align the end plug at the end of the vessel, ensuring that the end plug is parallel with the sidewall of the vessel. Slowly insert the end plug until the retaining groove is visible.

Step 5 Install Locking Crescents - Inspect and dry the retaining groove. Place one of the locking crescents into the retaining groove, while aligning the screw that is pre-threaded into the crescent over the threaded hole in the end plug. Ensure that the edge of the crescent is seated in the retaining groove before you begin threading the screw into the threaded opening. Once hand tight, the screw can be threaded using a #5 Hex key. Do not over tighten the screws.

Step 6 Reconnect Permeate Piping – Reconnect the system piping to the vessel connections.

Step 7 Pressurize System – A thorough pre-pressurization inspection should be conducted, including verifying that the heads are properly installed, system piping connections are in place, and elements are installed.

Step 8 Inspect for Leaks – All connections should be free from leaks. Do not operate leaking vessels

ROPV Limited Warranty

Harbin ROPV Industry Development Center (hereinafter called “ROPV”) vessels (the “Product”) are warranted to the original purchaser (the “Customer”) under normal use and if installed, operated and maintained in accordance with applicable User Guides to be free of defects in material and/or workmanship for a period of one (1) year from date of manufacture subject to the following. Any replacement Product or Part will be warranted only for the remainder of the original warranty period or thirty (30) days, whichever is longer.

Exclusions from this Limited Warranty

The warranty shall be void if:

1. defects are not reported during the warranty period.
2. the Product is subject to accident, damage, incorrect installation, mishandling, abuse, misuse, negligence or accident by any other party.
3. problems caused by modification or alteration.
4. chemical exposure or acts of nature.
5. any item manufactured by other companies.
6. wear on replaceable components under normal conditions – seals are excluded from this warranty.

Procedure for Obtaining Warranty Performance

ROPV reserves the right to determine if a reported defect is a breach of this warranty. This may require, at ROPV’s discretion, one or more of the following: 1. an inspection or test of the Product and/or the system in which it was installed by an ROPV representative - the customer is responsible for arranging access to the Product. 2. an inspection or test of the product and/or the system in which it was installed by the Customer. 3. an inspection or test of the product and/or the system in which it was installed by third party inspector appointed by ROPV. 4. return of the Product to ROPV’s factory for inspection or testing. This is not a statement of limitations for warranty performance and ROPV reserves the right to conduct warranty performance outside of the items shown.

If the Product is found by ROPV to be defective under the terms of this warranty, ROPV will perform one of the following at its option: 1. supply a substantially similar replacement part based on FOB factory terms. 2. conduct a field repair of the Product. 3. issue a credit for the original cost of the Products. This is not a statement of limitations for warranty performance and ROPV reserves the right to conduct warranty performance outside of the items shown.

Products returned to ROPV for inspection or testing must be shipped freight prepaid at the Customer’s expense. If a breach of warranty is confirmed, ROPV will bear all costs related to the inspection and testing. If the Product failure is found to be caused by cause other than breach of warranty, all costs related to the inspection and testing of the Product will be borne by the Customer. This includes a USD\$500 per day fee and all related travel expenses.

All reported defects must be submitted to ROPV in writing.

Disclaimer

ROPV makes no expressed or implied warranty other than that specifically set forth in this warranty statement. ROPV disclaims any warranty of merchantability or of fitness for a particular purpose.

ROPV’s liability under the terms of this warranty shall not exceed the purchase price of the Product which are claimed to be defective. ROPV shall not be liable for any consequential or incidental damages whatsoever, including but not limited to injuries or damages to person or property, loss of business profits, business interruption, loss of use, cost of removing/installing Products, or the claims of third parties.

Warranties or Representations by Others

No agent, employee, dealer, or other person has any authority to make any warranties or representations concerning ROPV or the Product. ROPV is not responsible for such claims of warranty or representation.