



1/4" FLOW SIZE
LEGACY METAL LATCH
40AC Series

Nordson MEDICAL's LinkTech line of 40AC quick connect couplings are produced in a durable natural acetal (POM) thermoplastic. These couplings are resistant to most mild chemicals and are manufactured to be trouble free for many years of service. They are available with internal shut-off valves or straight through designs. They are intuitive to use and make an audible "click" when coupled. The 40AC Series couplings interconnect with all other 40PP and 40CB Series couplings as well as other similar industry thumb-latch type couplings.

FEATURES & BENEFITS

- Legacy metal thumb-latch couplings available with hose barb, PTF, push-in and threaded terminations
- Resistant to most mild chemicals
- Intuitive, easy-to-use design
- Audible click when coupled
- Available with internal shut-off valves or straight-through designs
- Interconnect with each other and with similar industry thumb-latch couplings

SPECIFICATIONS

- **Materials:**
 - Bodies & Terminations: Acetal (POM)
 - Internal Valves: Acetal (POM)
 - Internal Valve Springs: 316 Stainless Steel
 - O-rings: Buna-N (others available)
 - Thumb-latch: Stainless Steel
 - External Springs & Pins: Stainless Steel
- **Performance Ratings:**
 - Operating Pressure: Vacuum to 120psi; (8.3bar)
 - Temperature: -40°F to 180°F; (-40°C to 82°C)
 - Flow Capacity: 1/4" (6.4 mm)
 - Fits Tubing IDs: 1/4" (6.4 mm) - 3/8" (9.5 mm)

1/4" FLOW SIZE
LEGACY METAL LATCH
40AC Series



QUICK CONNECT COUPLINGS

Part Style

Part Image

Open Flow Straight

1/4" (6.4 mm) tube ID & threaded
5/16" (7.9 mm) tube ID
3/8" (9.5 mm) tube ID & threaded
Female and Male



Open Flow Panel Mount

1/4" (6.4 mm) tube ID
3/8" (9.5 mm) tube ID
Female and Male



Open Flow Elbow

1/4" (6.4 mm) tube ID & threaded
3/8" (9.5 mm) tube ID
Male ONLY



Valved Straight

1/4" (6.4 mm) tube ID & threaded
5/16" (7.9 mm) tube ID
3/8" (9.5 mm) tube ID & threaded
Female and Male
1/4" OD tubing push-in



Valved Panel Mount

1/4" (6.4 mm) tube ID
5/16" (7.9 mm) tube ID
3/8" (9.5 mm) tube ID
Female and Male
1/4" OD tubing push-in



Valved Elbow

1/4" (6.4 mm) tube ID
3/8" (9.5 mm) tube ID
Male ONLY





1/4" FLOW SIZE
LEGACY METAL LATCH
40CB Series

Nordson MEDICAL's LinkTech line of 40CB quick connect couplings are produced in food grade chrome plated brass material. These couplings are more durable and withstand higher pressures. They are available with internal shut-off valves or straight through designs. They are intuitive to use and make an audible "click" when coupled. The 40CB Series couplings interconnect with all other 40AC and 40PP Series couplings as well as other similar industry thumb-latch type couplings.

FEATURES & BENEFITS

- Legacy metal thumb-latch couplings available with hose barb, PTF and threaded terminations
- Intuitive, easy-to-use design
- Audible click when coupled
- Available with internal shut-off valves or straight-through designs
- Interconnect with each other and with similar industry thumb-latch couplings

SPECIFICATIONS

- **Materials:**
 - Bodies & Terminations: Food Grade Chrome/Brass
 - Internal Valves: Acetal (POM)
 - Internal Valve Springs: 316 Stainless Steel
 - O-rings: Buna-N (others available)
 - Thumb-latch: Stainless Steel
 - External Springs & Pins: Stainless Steel
- **Performance Ratings:**
 - Operating Pressure: Vacuum to 250psi; (17.3bar)
 - Temperature: -40°F to 180°F; (-40°C to 82°C)
 - Flow Capacity: 1/4" (6.4 mm)
 - Fits Tubing IDs: 1/4" (6.4 mm) - 3/8" (9.5 mm)

1/4" FLOW SIZE
LEGACY METAL LATCH
40CB Series



QUICK CONNECT COUPLINGS

Part Style

Part Image

Open Flow Straight

1/4" (6.4 mm) tube ID & threaded
3/8" (9.5 mm) tube ID
Female and Male



Open Flow Panel Mount

1/4" (6.4 mm) threaded
3/8" (9.5 mm) tube ID
Female and Male



Open Flow Elbow

1/4" (6.4 mm) threaded
Male ONLY



Valved Straight

1/4" (6.4 mm) tube ID & threaded
5/16" (7.9 mm) tube ID
3/8" (9.5 mm) tube ID & threaded
Female and Male



Valved Panel Mount

1/4" (6.4 mm) tube ID & threaded
3/8" (9.5 mm) tube ID
Female and Male



Valved Elbow

1/4" (6.4 mm) tube ID & threaded
5/16" (7.9 mm) tube ID
3/8" (9.5 mm) tube ID & threaded
Male ONLY





1/4" FLOW SIZE
LEGACY METAL LATCH
40PP Series

Nordson MEDICAL's LinkTech line of 40PP quick connect couplings are produced from medical grade, gamma sterilizable polypropylene. These legacy metal latch couplings offer greater chemical resistance. They are available with internal shut-off valves or straight through designs. They are intuitive to use and make an audible "click" when coupled. These couplings are available in Legacy Almond and Modern Cool Grey colors. The 40PP Series couplings interconnect with all other 40AC and 40CB Series couplings as well as other similar industry thumb-latch type couplings.

FEATURES & BENEFITS

- Legacy metal thumb-latch couplings available in hose barb, PTF and threaded terminations
- Offer greater chemical resistance
- Intuitive, easy-to-use design
- Audible click when coupled
- Available with internal shut-off valves or straight-through designs
- Available in 2 standard colors: almond and grey
- Interconnect with each other and with similar industry thumb-latch couplings

SPECIFICATIONS

- **Materials:**
 - Bodies & Terminations: Medical Grade Polypropylene
 - Internal Valves: Medical Grade Polypropylene
 - Internal Valve Springs: 316 Stainless Steel
 - O-rings: Peroxide-cured EPDM (others available)
 - Thumb-latch: Stainless Steel
 - External Springs & Pins: Stainless Steel
- **Performance Ratings:**
 - Operating Pressure: Vacuum to 120psi; (8.3bar)
 - Temperature: 32°F to 160°F; (0°C to 71°C)
 - Flow Capacity: 1/4" (3.2 mm)
 - Fits Tubing IDs: 1/4" (6.4 mm) - 3/8" (9.5 mm)
 - Sterilization: Gamma; 50kGy irradiation max

1/4" FLOW SIZE
LEGACY METAL LATCH
40PP Series

QUICK CONNECT COUPLINGS

Part Style

Part Image

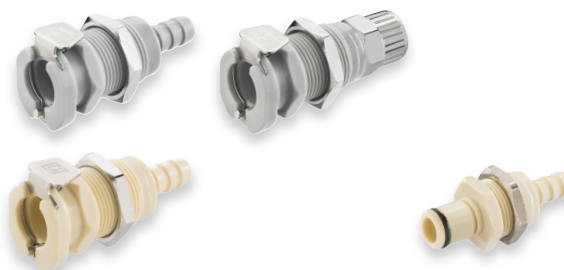
Open Flow Straight

1/4" (6.4 mm) tube ID & threaded
Female and Male
3/8" threaded



Open Flow Panel Mount

1/4" (6.4 mm) tube ID
3/8" (9.5 mm) tube ID & threaded
Female and Male



Valved Straight

1/4" (6.4 mm) tube ID & threaded
3/8" (9.5 mm) tube ID
Female and Male



Valved Panel Mount

1/4" (6.4 mm) tube ID
3/8" (9.5 mm) tube ID & threaded
Female and Male



Valved Elbow

1/4" (6.4mm) tube ID & threaded
3/8" (9.5 mm) tube ID
Male ONLY

