



T&S BRASS AND BRONZE WORKS, INC.

2 Saddleback Cove / P.O. Box 1088
Travelers Rest, SC 29690

Model No.

B-0866-PV

Item No.

Travelers Rest, SC: 800-476-4103 • Simi Valley, CA: 800-423-0150 • Fax: 864-834-3518 • www.tsbrass.com



ADA Compliant

This Space for Architect/Engineer Approval

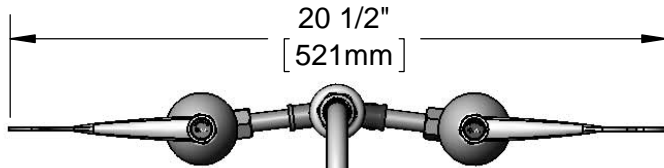
Job Name _____ Date _____

Model Specified _____ Quantity _____

Customer/Wholesaler _____

Contractor _____

Architect/Engineer _____



Swivel Gooseneck w/
B-0103-01
Rosespray Outlet.
Rigid Conversion Requires
014200-45 Lock Washer
(Included)

Eterna Cartridges
& 6" Wrist Action
Handles w/ Color
Coded Indexes

Ø 1 11/16"
[43mm]
Swivel Deck
Flange

10 5/8"
[269mm]

5 3/4"
[146mm]

5 7/8"
[149mm]

4 1/8"
[104mm]

4"
[101mm]

Mounting
Surface

1 5/16"
[34mm]
Maximum
Thickness

Ø 2 1/4" [57mm]
Escutcheon

1 1/16"
[28mm]

1/2" NPSM
Coupling Nuts

1/4" NPT Female
Thread For Pedal Valve

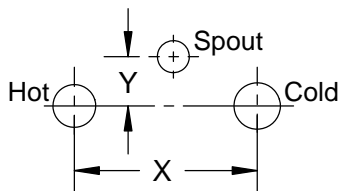
8"
[203mm]
Adjustable Faucet
(See Chart Below)

Rough-In Requirements:

Center Shank: Ø 1" [Ø 25mm] Mounting Hole

Hot/Cold Bodies: Ø 1 1/2" [Ø 38mm] Mounting Hole

Hot & Cold Center Sections
Can be at Angle



if "Y" is
1/2"
1"
1 1/2"
2"

Then Faucet Will
Fit "X" with Standard
1/4" NPT Cross Pipes
Furnished

8"
7 3/4"
7 3/8"
7"

Product Specifications:

8" Deck Mount Mixing Faucet w/ Adjustable Inlet Centers, Eterna Cartridges, 6" Wrist Action Handles, Swivel Gooseneck w/ Rosespray Outlet & Pedal Valve Connection

Drawn

DHL

Checked

DMH

Approved

JHB

Scale:

1:6

Date:

11/02/12

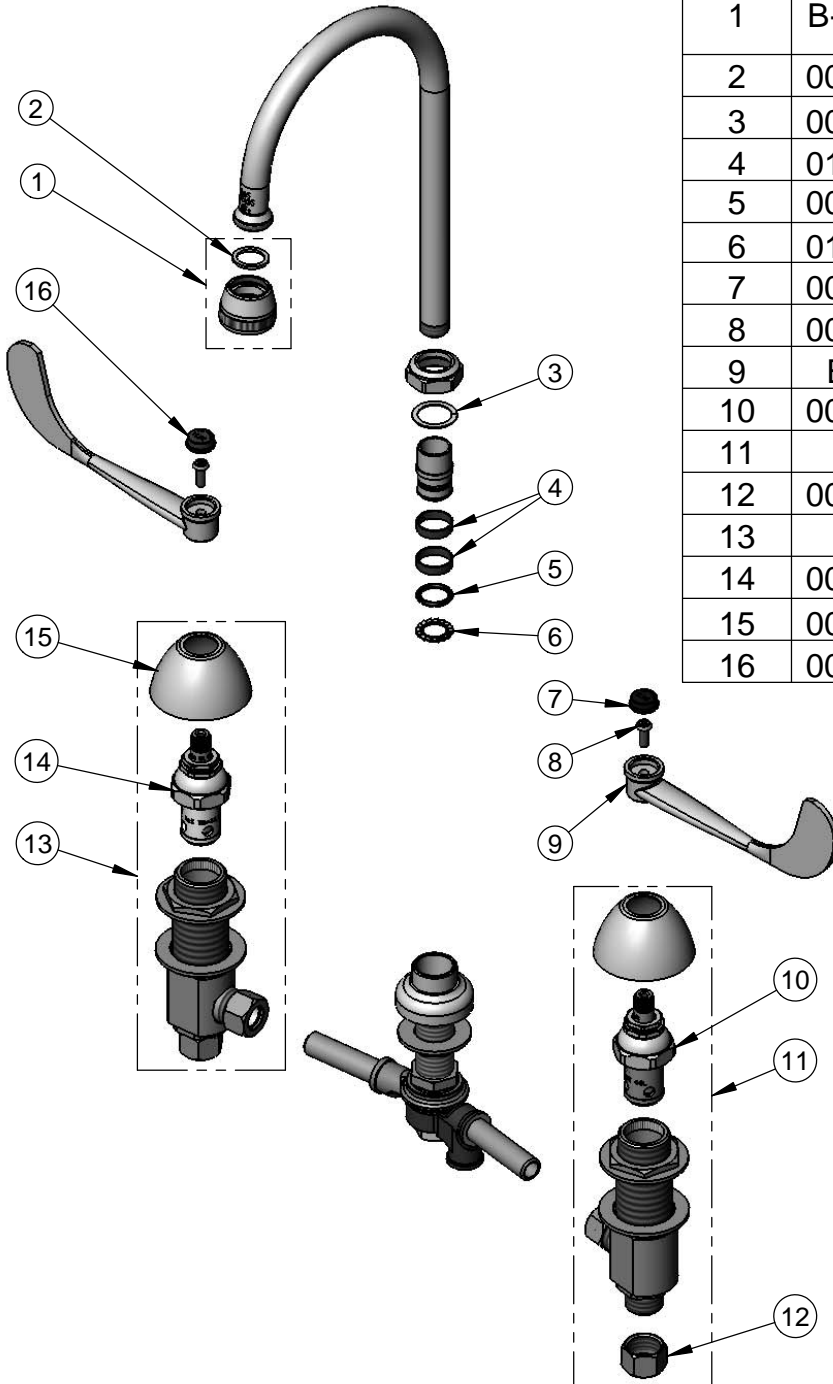


T&S BRASS AND BRONZE WORKS, INC.
 2 Saddleback Cove / P.O. Box 1088
 Travelers Rest, SC 29690

Model No.
B-0866-PV

Item No.

Travelers Rest, SC: 800-476-4103 • Simi Valley, CA: 800-423-0150 • Fax: 864-834-3518 • www.tsbrass.com



ITEM NO.	SALES NO.	DESCRIPTION
1	B-0103-01	Rosespray Outlet w/ Female Threads
2	001048-45	Nozzle Tip Washer
3	009538-45	Swivel Washer
4	011429-45	Swivel Sleeves (2)
5	001074-45	O-Ring
6	014200-45	Star Washer, Anti-Rotation
7	001686-45	Blue CW Index
8	000925-45	Lab Handle Screw
9	B-WH6	6" Wrist Action Handle
10	006477-40	Eterna Cartridge - LTC (Teflon)
11	161A	B-0850 Cold Side Body
12	000958-20	Coupling Nut
13	162A	B-0850 Hot Side Body
14	006478-40	Eterna Cartridge, RTC (Teflon)
15	001257-40	Bell Escutcheon
16	001194-45	Red HW Index

Product Specifications:
 8" Deck Mount Mixing Faucet w/ Adjustable Inlet Centers, Eterna Cartridges, 6" Wrist Action Handles, Swivel Gooseneck w/ Rosespray Outlet & Pedal Valve Connection

Drawn DHL	Checked DMH	Approved JHB
Scale: NTS		Date: 11/02/12