



# T&S BRASS AND BRONZE WORKS, INC.

2 Saddleback Cove / P.O. Box 1088  
Travelers Rest, SC 29690



REG. #A2601  
ISO #9001

Model No.  
**B-2821**

Item No.

Travelers Rest, SC: 800-476-4103 Simi Valley, CA: 800-423-0150 Fax: 864-834-3518 www.tsbrass.com

This Space for Architect/Engineer Approval

Job Name \_\_\_\_\_ Date \_\_\_\_\_

Model Specified \_\_\_\_\_ Quantity \_\_\_\_\_

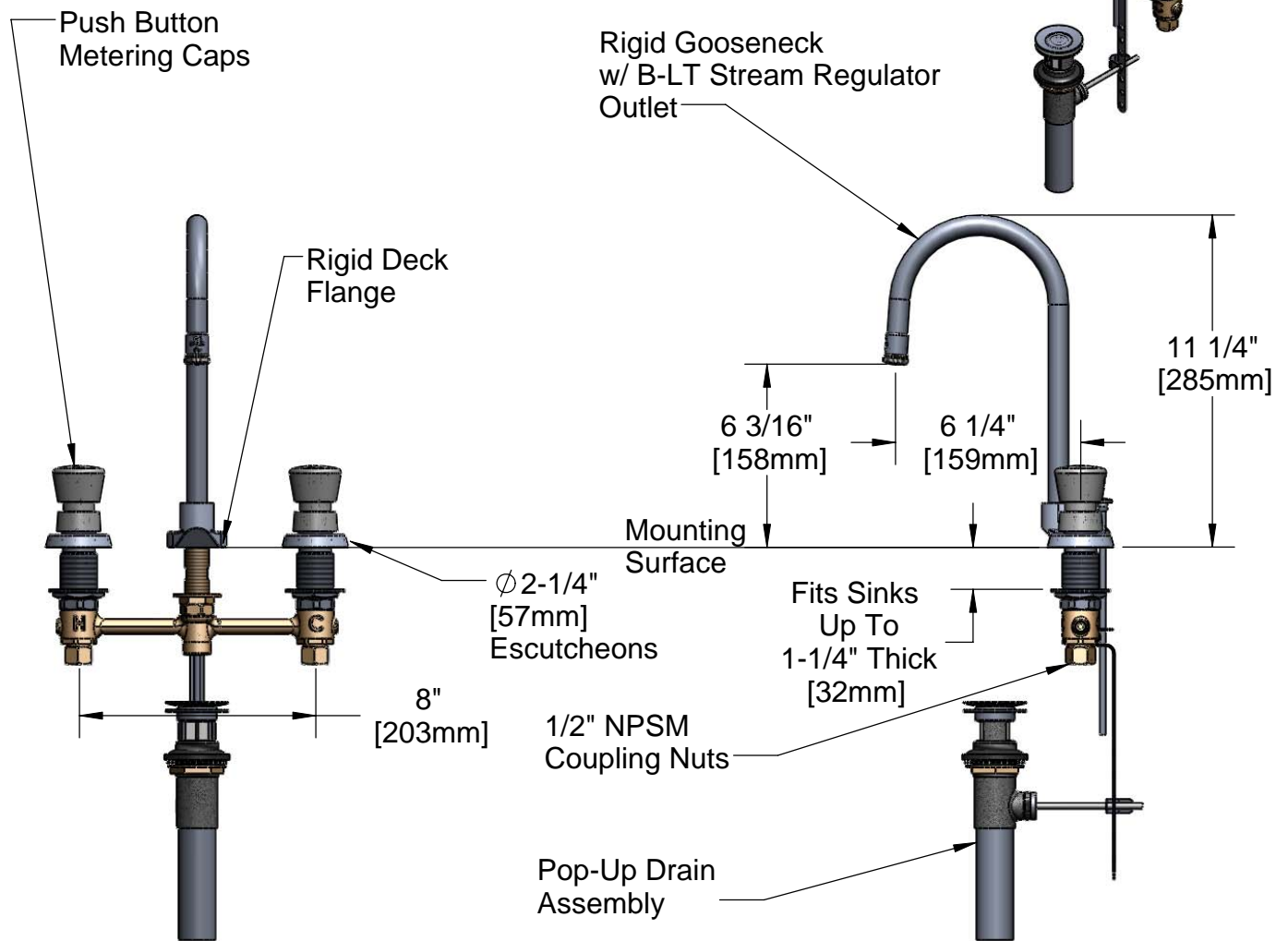
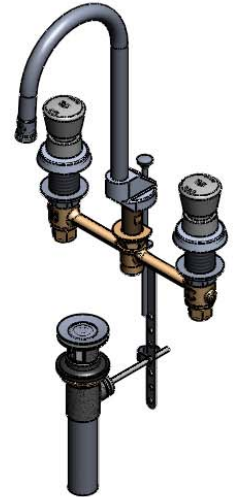
Customer/Wholesaler \_\_\_\_\_

Contractor \_\_\_\_\_

Architect/Engineer \_\_\_\_\_



**ADA Compliant**



Note: Rough-In Required:  
 Ø 1" [25mm] for Center Shank  
 Ø 1-1/2" [38mm] for Hot/Cold Side [1-1/4" [32mm] Minimum]

Product Specifications:  
**EasyInstall Faucet w/Metering Cartridges, Pop-Up Drain, Push Button Handles, 8" Inlet Centers, Rigid Gooseneck w/ Stream Regulator Outlet**

Drawn <b>JRM</b>	Checked <b>GEF</b>	Approved <b>JHB</b>
Scale: <b>NTS</b>		Date: <b>12/08/08</b>



**T&S BRASS AND BRONZE WORKS, INC.**

2 Saddleback Cove / P.O. Box 1088  
Travelers Rest, SC 29690



REG. #A2601  
ISO #9001

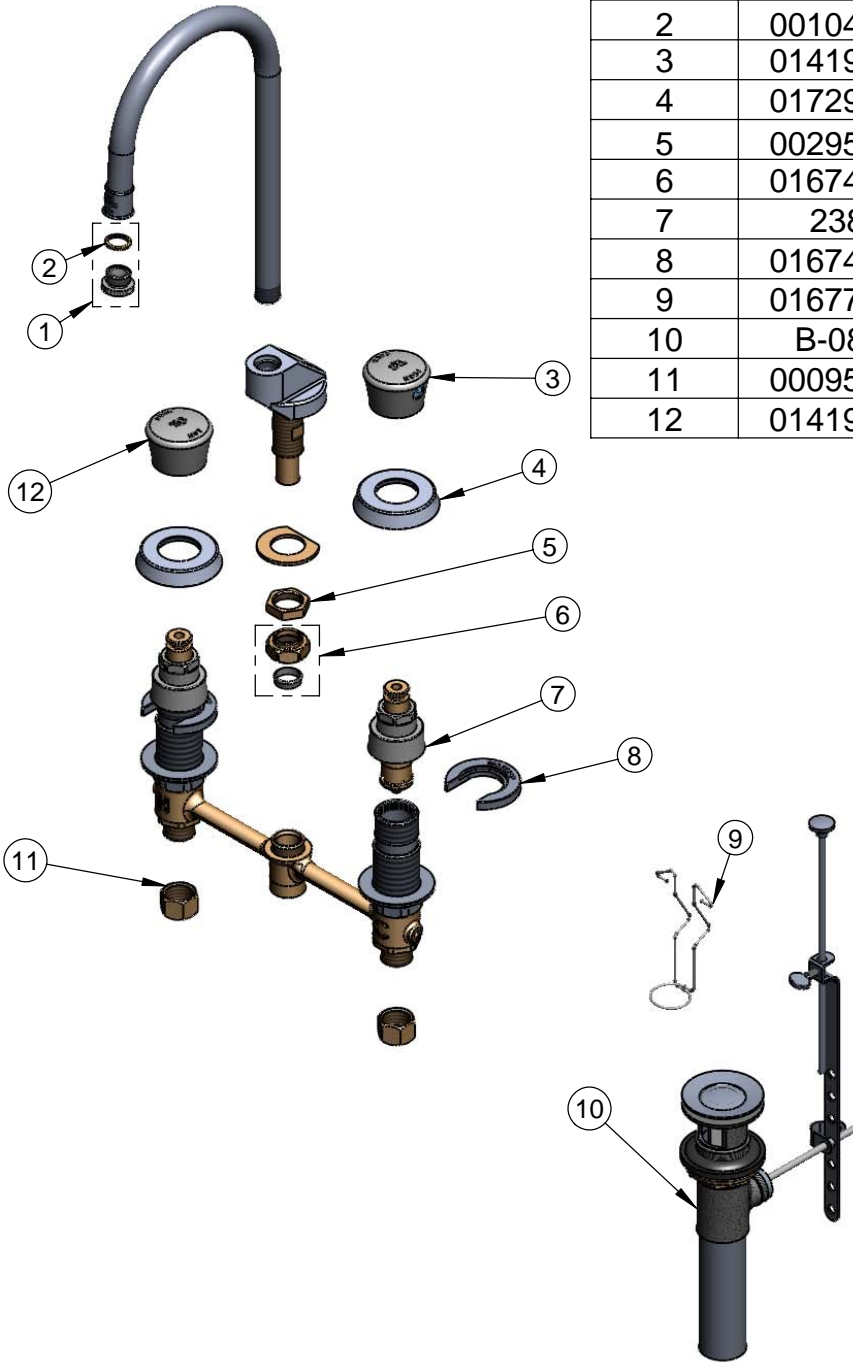
Model No.

**B-2821**

Item No.

Travelers Rest, SC: 800-476-4103 Simi Valley, CA: 800-423-0150 Fax: 864-834-3518 www.tsbrass.com

ITEM NO.	SALES NO.	DESCRIPTION
1	B-LT	Stream Regulator Outlet
2	001043-45	Washer
3	014195-40	Cold Cap Assembly
4	017292-45	Metering CWS Escutcheon
5	002954-45	Shank Lock Nut
6	016745-45	Compression Nut & Fitting
7	238A	Push Button Metering Cartridge
8	016749-45	Sidebody C-Washer
9	016777-45	CWS Hanger
10	B-0898	Pop-Up Drain
11	000958-20	Coupling Nut
12	014194-40	Hot Cap Assembly



Product Specifications:

EasyInstall Faucet w/Metering Cartridges, Pop-Up Drain,  
Push Button Handles, 8" Inlet Centers,  
Rigid Gooseneck w/ Stream Regulator Outlet

Drawn

**JRM**

Checked

**GEF**

Approved

**JHB**

Scale:

**NTS**

Date:

**12/08/08**