

# New Generation of Pumps

# NORUS®

series

## One Point Lifting Eye

Provides balanced easy lifting in and out of sumps.

## Anti-Creeping Top Bearing

Provides increased protection against bearing creeping in low head applications.

## Cast Aluminum Bearing Housing

Provides better heat dissipation and structural integrity.

## High Efficiency Motor

Industry leading Class E insulation for long life and low operating cost.

## Excellent Corrosion Resistance

304 stainless steel and Poly Amide fiber reinforced resin provides superior corrosion resistance even in hard applications.

## Air Filled Motor

Motor is environmentally safe and provides lower average operating temperature.

**NEW**

## Seal Extender

Proprietary design cools seal surface more efficiently than standard seal designs.

## Air Release Valve

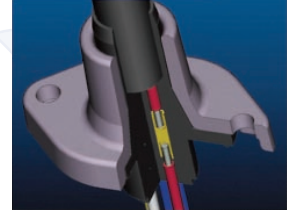
Releases air in the pump chamber preventing air lock.

## Impeller To Shaft Connection

A stainless steel shaft and 304 S.S. impeller boss provides a solid reliable connection.

## Cable Entry

Anti-wicking design prevents water from entering the motor housing should the cable get damaged.



## Thermal Overload

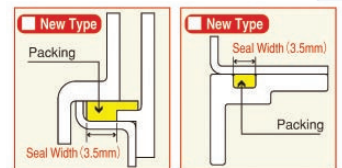
Prevents motor from overheating due to locked rotor or under voltage.

## Unique Hardware Design

Implementation of fiberglass with stainless screws provides excellent resistance to vibration and corrosion.

## Stator O-Rings

Our new stator o-rings design provides 250% more sealing surface.



**NEW**

## Seamless Stator Casing

Seamless design provides less chance for corrosion.

## Vortex Impeller Design

Superior solids handling characteristics, especially with fibrous and stringy materials.



Poly Amide Fiber reinforced resin  
After 200 hours operation



Ordinary ABS resin  
After 200 hours operation

*Test Condition: Pump was operated in 600 liters of water containing 120kg of sand.*