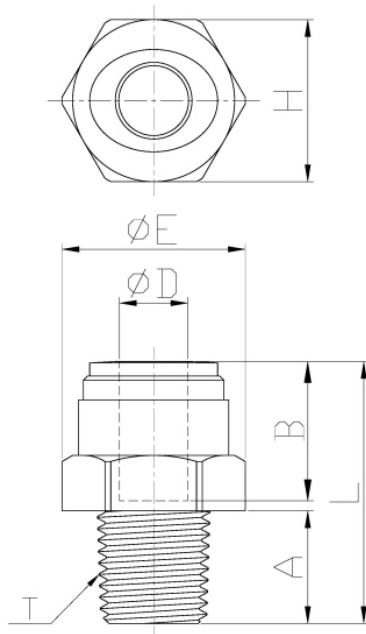


Male Connector (BSPT)

Pressure Ratings			
	< 5/16"	3/8"	1/2"
33 °F	290 psi	232 psi	203 psi
68 °F	290 psi	232 psi	203 psi
150 °F	232 psi	203 psi	116 psi

Torque Allowance					
Thread Size	1/8"	1/4"	3/8"	1/2"	3/4"
Max Torque	1.1 ft lbs	1.1 ft lbs	2.2 ft lbs	2.2 ft lbs	2.9 ft lbs



Model	ØD	T(BSPT)	A	B	ØE	H(Hex)	L	WEIGHT(g)
AMC4-R1	1/4	1/8	0.319	0.646	0.728	0.669	1.031	4
AMC4-R2	1/4	1/4	0.480	0.634	0.748	0.669	1.055	4.3
AMC4-R3	1/4	3/8	0.531	0.665	0.827	0.748	1.047	5.8
AMC6-R2	3/8	1/4	0.516	0.795	0.827	0.748	1.421	7.8
AMC6-R3	3/8	3/8	0.531	0.795	0.913	0.827	1.138	6.8
AMC8-R3	1/2	3/8	0.531	0.988	0.906	0.827	1.366	11.3
AMC8-R4	1/2	1/2	0.650	0.980	1.063	0.945	1.622	10.8