

4

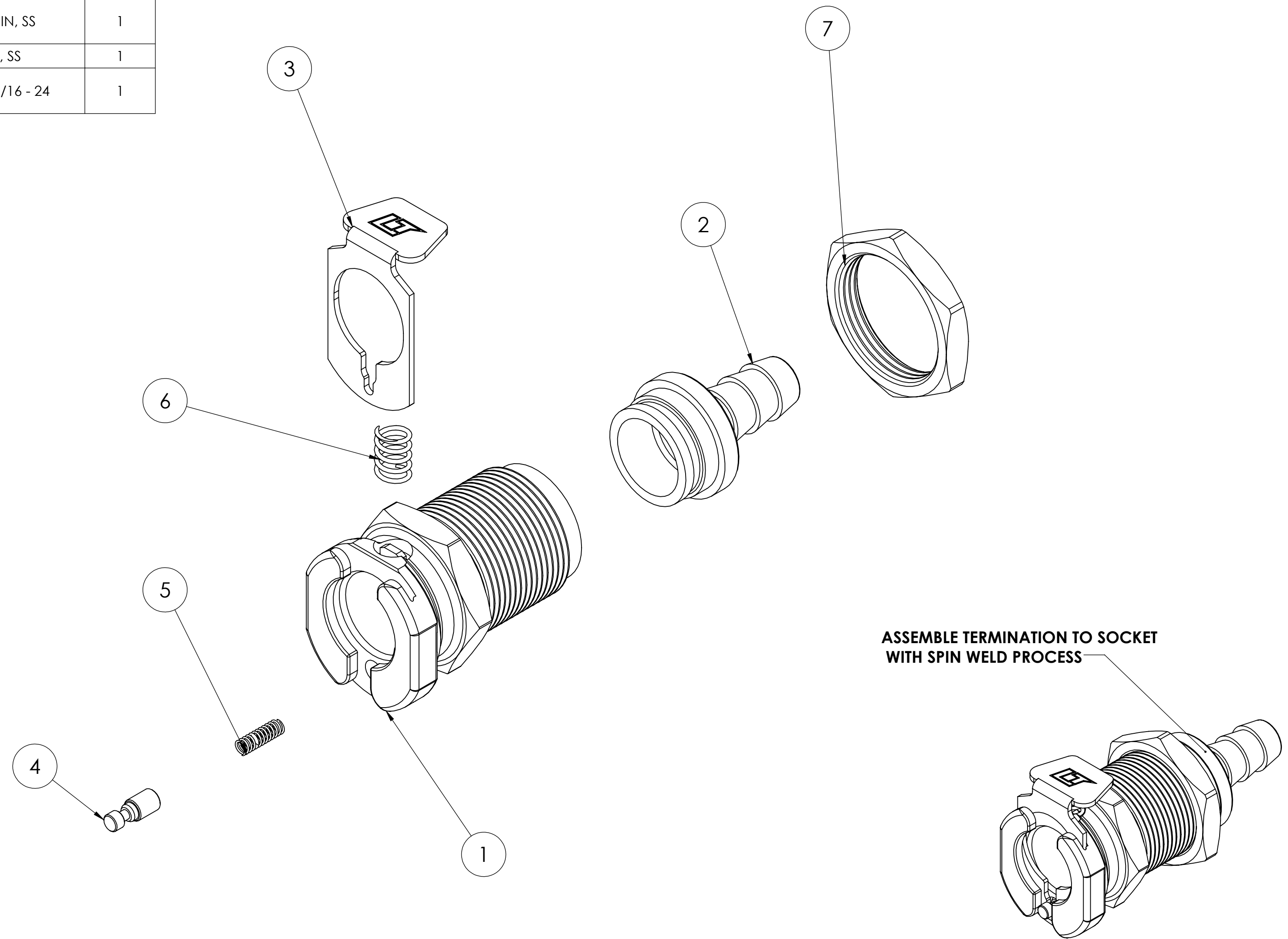
3

2

1

ITEM NO.	PART NUMBER	DESCRIPTION	QTY.
1	C11140 SOCKET BODY, PP, VALVED, PM, 40 SERIES. WRENCH FLAT FACE	SOCKET BODY, PP, VALVED, PM, 40 SERIES	1
2	C125 End Term 250 HB	END TERM, PP, 250 HB, PP IN AC TOOL	1
3	C11142 LATCH, SS, LONG SLOT, 40PP SERIES	LATCH, SS, LONG SLOT, 40 SERIES	1
4	C101 LATCH PIN	PIN, LATCH, SS	1
5	C106 LATCH PIN SPRING, COMPRESSED .260	SPRING, LATCH PIN, SS	1
6	C107 LATCH SPRING	SPRING, LATCH, SS	1
7	C131 PANNEL NUT FOR BODY, CONSTRAINED	NUT, PANEL, CB, 11/16 - 24	1

REVISIONS				
ZONE	REV.	DESCRIPTION	DATE	APPROVED



- NOTES:**
- BODY & VALVE MATERIAL: BASELL PRO-FAX PD626 GAMMA RESISTANT POLYPROPYLENE, LIGHT GRAY COLOR.
  - LATCH HARDWARE MATERIAL: STAINLESS STEEL
  - ASSEMBLY INTERCONNECTS WITH SIMILAR INDUSTRY STANDARD 1/4" FLOW CONNECTORS.

**PROPRIETARY AND CONFIDENTIAL**  
 THE INFORMATION CONTAINED IN THIS DRAWING IS THE SOLE PROPERTY OF <INSERT COMPANY NAME HERE>. ANY REPRODUCTION IN PART OR AS A WHOLE WITHOUT THE WRITTEN PERMISSION OF <INSERT COMPANY NAME HERE> IS PROHIBITED.

UNLESS OTHERWISE SPECIFIED:		NAME	DATE	<b>LINKTECH</b> QUICK COUPLING SOLUTIONS
DIMENSIONS ARE IN INCHES		C. DAVIS	04/21/15	
TOLERANCES:		DRAWN		TITLE: <b>40PPX-S3-04MALD SOCKET ASSEMBLY DRAWING</b>
FRACTIONAL: ±1/32		CHECKED		
ANGULAR: MACH ±0.5 BEND ±2		ENG APPR.		
ONE PLACE DECIMAL ±0.1		MFG APPR.		
TWO PLACE DECIMAL ±0.01		Q.A.		REV <b>A</b>
TWO PLACE DUAL (mm) [±0.12]		COMMENTS:		
THREE PLACE DECIMAL ±0.005				SCALE: 2.5:1 WEIGHT: SHEET 1 OF 1
INTERPRET GEOMETRIC TOLERANCING PER:				
MATERIAL				
FINISH				
NEXT ASSY	USED ON			
APPLICATION				
DO NOT SCALE DRAWING				

4

3

2

1