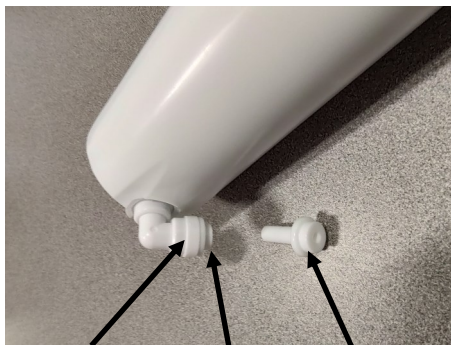
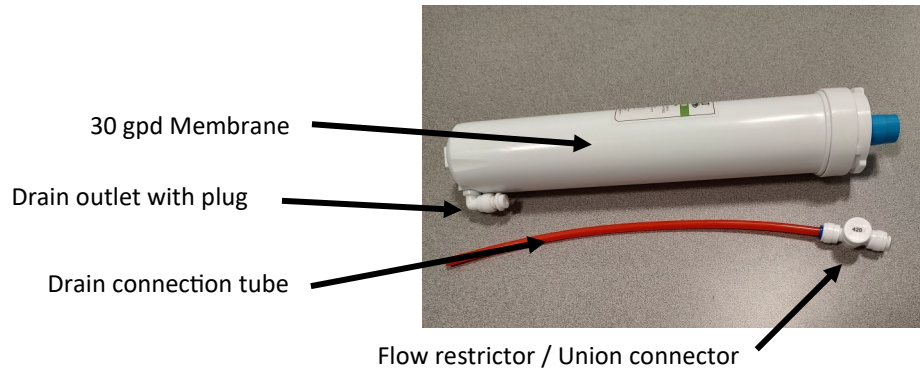


# Neo-Pure Compatible SQC membrane - Steps to Prepare for installation

Following these simple instructions will make installing your new Neo-Pure membrane into the SQC reverse osmosis drinking water system easy and trouble free.

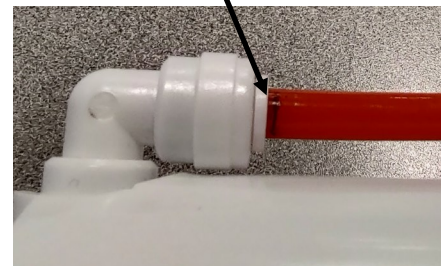
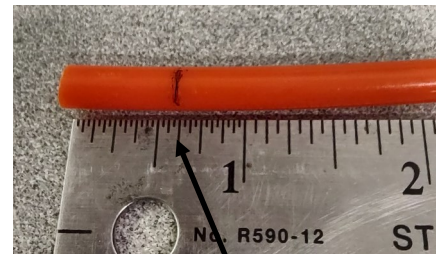
**1.** Remove the membrane and drain connection tubing from the package and inspect to make sure these parts are present



**2.** Remove the plug from the drain outlet fitting by pressing the collet towards the fitting body while pulling the plug out

**3.** Measure and make a line on the drain connection tubing end at 5/8"

**4.** Insert this into the fitting body on the membrane making sure that the line is even with the collet. This



**5.** Now you are ready to insert the membrane cartridge into your SQC reverse osmosis system.

**6.** Once in place, connect the red tube with the flow restrictor / union connector on the end to the tube connected to the air-gap or drain line.

**7.** Now that the tubing and flow restrictor are in place and all other filters are in place, turn the feed water back on and allow the system to fill the tank. Discard the water and refill again before using.

