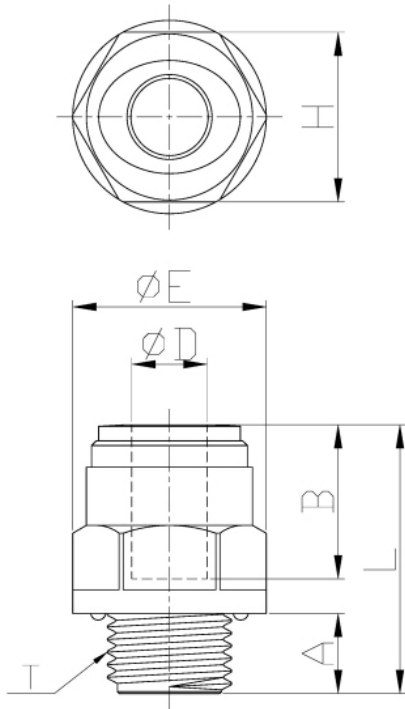


# Male Connector (BSPP)

Pressure Ratings			
	< 5/16"	3/8"	1/2"
33 °F	290 psi	232 psi	203 psi
68 °F	290 psi	232 psi	203 psi
150 °F	232 psi	203 psi	116 psi

Torque Allowance					
Thread Size	1/8"	1/4"	3/8"	1/2"	3/4"
Max Torque	1.1 ft lbs	1.1 ft lbs	2.2 ft lbs	2.2 ft lbs	2.9 ft lbs



Model	ØD	T(BSPP)	A	B	ØE	H(Hex)	L	WEIGHT(g)
AMC4M-G1	04	1/8	6.0	14.7	16.6	15	21.9	3.3
AMC4M-G2	04	1/4	8.5	14.7	20.5	18	23.9	4.9
AMC6M-G1	06	1/8	6.0	16.1	16.6	15	24.1	3.3
AMC6M-G2	06	1/4	8.5	16.1	20.5	18	24.1	4.8
AMC8M-G1	08	1/8	6.0	17.5	18.5	17	27	5.2
AMC8M-G2	08	1/4	8.5	17.5	20.5	18	28.5	6.1
AMC8M-G3	08	3/8	9.0	17.5	24	21	26.5	7
AMC8M-G4	08	1/2	12.5	17.5	28.5	26	29.5	11.9
AMC10M-G2	10	1/4	8.5	20.1	21.1	19	30.8	7.2
AMC10M-G3	10	3/8	9.0	20.1	24.2	21	26.3	7
AMC10M-G4	10	1/2	12.5	20.1	28.5	26	29.8	11.3
AMC12M-G3	12	3/8	9.0	24.7	27	24	34.2	11.6
AMC12M-G4	12	1/2	12.5	24.7	28.5	26	32.7	12.4