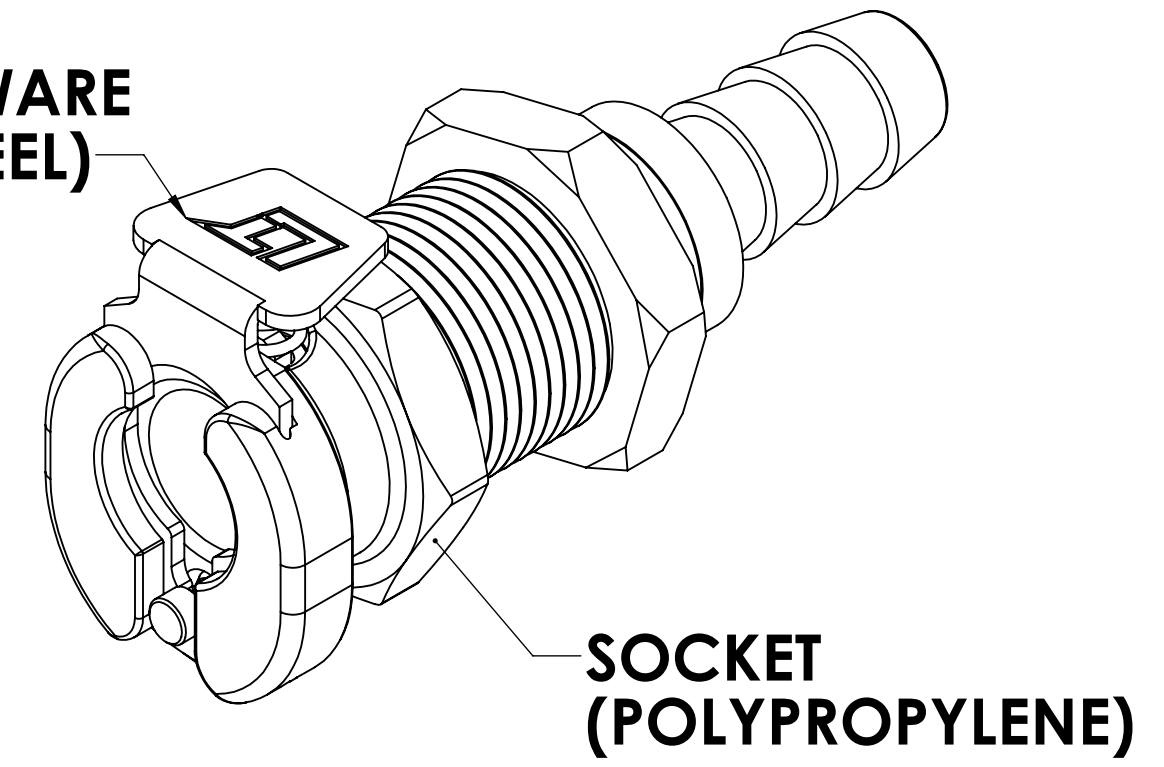
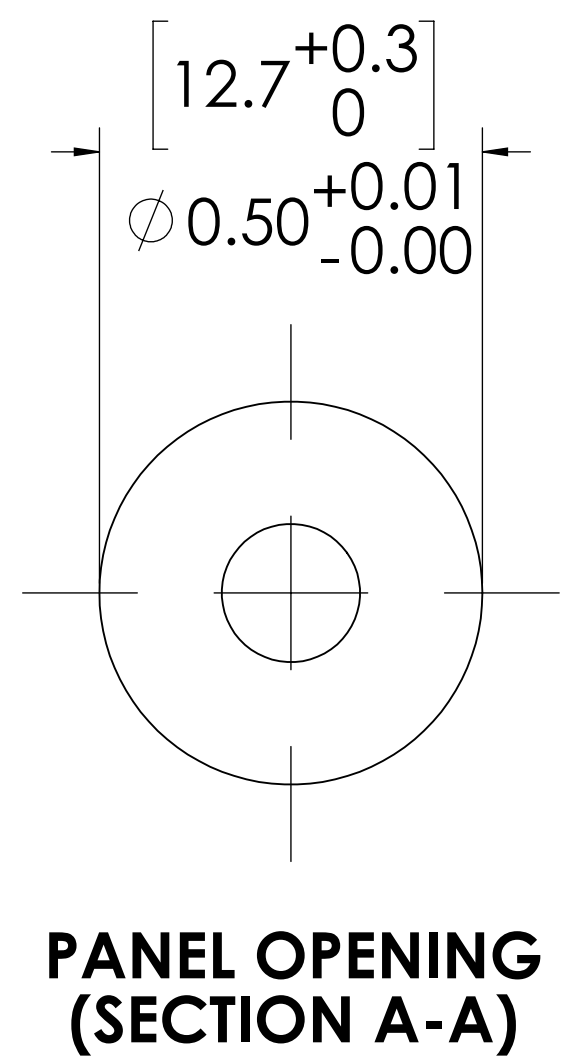
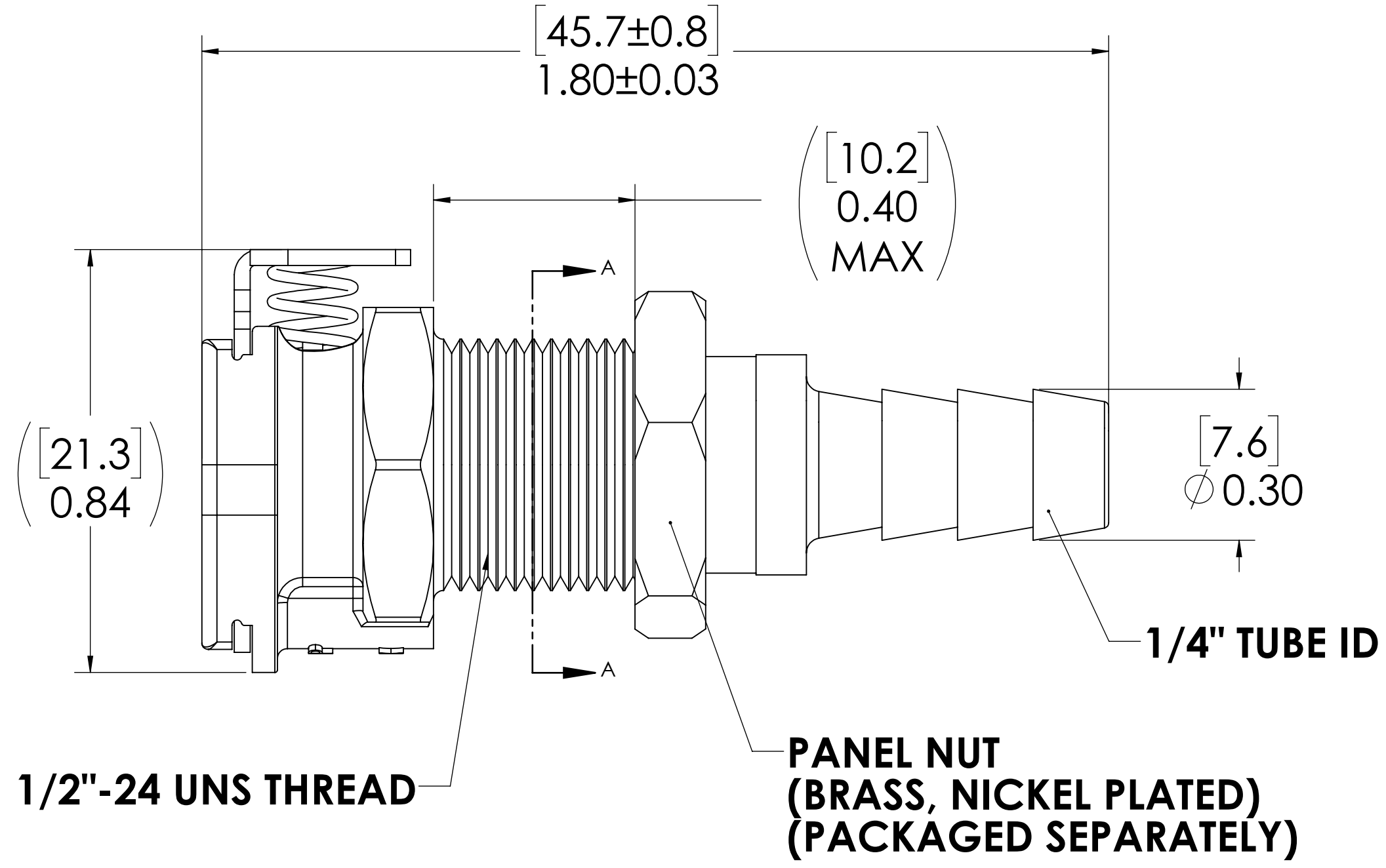
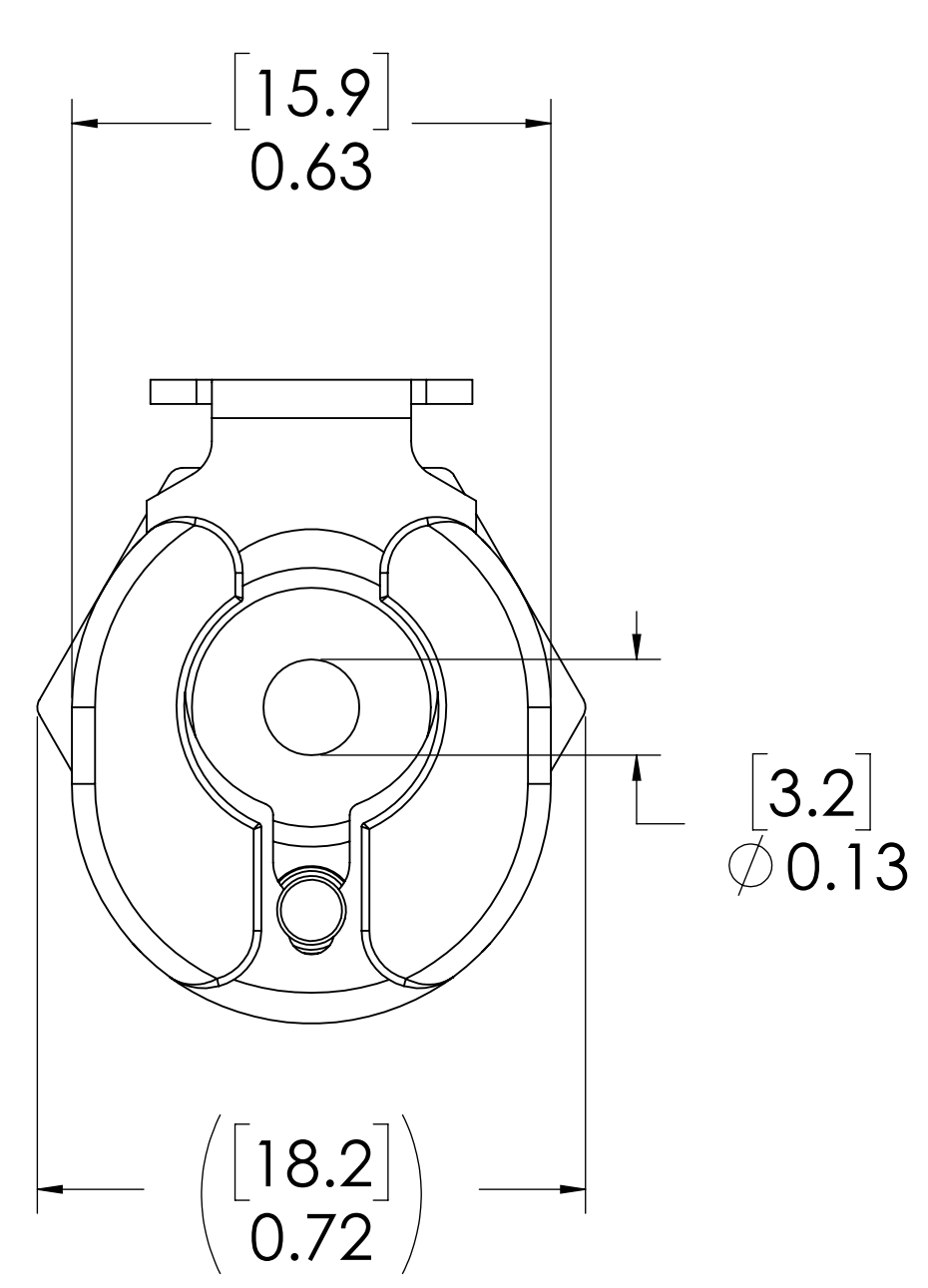


REVISIONS						
SHEET	ZONE	REV.	ECO	DESCRIPTION	DATE	APPROVED
1	ALL	A	50253	UPDATE DWG TO CURRENT FORMAT & STANDARDS	7/9/2018	HRC

**LATCH HARDWARE  
(STAINLESS STEEL)**



**SOCKET  
(POLYPROPYLENE)**



**PANEL OPENING  
(SECTION A-A)**

**FOR REFERENCE ONLY**

- NOTES:**
- MATERIAL: POLYPROPYLENE
  - COLOR: ALMOND

UNLESS OTHERWISE SPECIFIED: DIMENSIONS ARE IN INCHES TOLERANCES: FRACTIONAL ±1/32 ANGULAR: MACH ±0.5 BEND ±2 ONE PLACE DECIMAL ±0.1 TWO PLACE DECIMAL ±0.01 THREE PLACE DECIMAL ±0.005 TWO PLACE DUAL (mm) [±0.12]	DRAWN	ER	08-01-17	 PART NO: <b>20PP-S3-04MALD</b> DESCRIPTION: LinkTech 20PP Series Panel Mt. Female, Non-Valved, 1/4" HB, Molded Almond Color, Polypropylene
	CHECKED	HRC	08-01-17	
	ENG APPR.	HRC	7/9/18	
	MFG APPR.	BDB	7/9/18	
PRODUCTION	LS	7/9/18		
PROPRIETARY AND CONFIDENTIAL  THE INFORMATION CONTAINED IN THIS DRAWING IS THE SOLE PROPERTY OF LINKTECH LLC. ANY REPRODUCTION OR DISCLOSURE IN PART OR AS A WHOLE WITHOUT THE WRITTEN PERMISSION OF LINKTECH LLC IS STRICTLY PROHIBITED.	COMMENTS:			SIZE DWG. NO. REV <b>C</b> 20PP200178 <b>A</b>
SCALE: NTS		WEIGHT:	SHEET 1 OF 1	